

Line Light Source Series—Line light



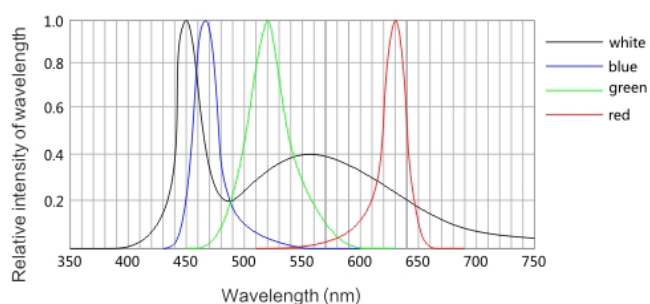
Product Features

- ◆ Using high-power surface mount lamp beads with high brightness;
- ◆ Using special optical materials for focusing, with good uniformity and consistency;
- ◆ Scientific heat dissipation design fully ensures the service life of the product.

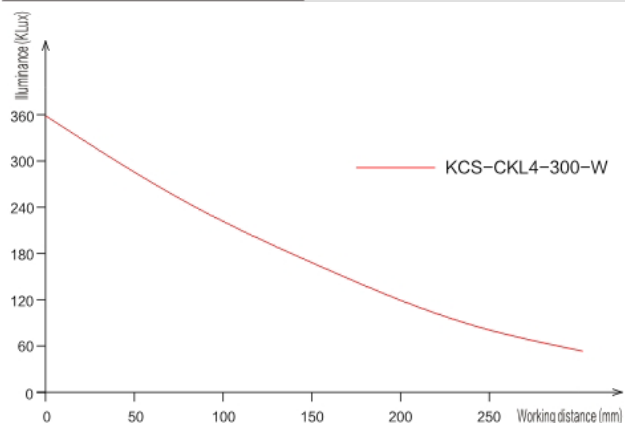
Application scope

- ◆ Mobile phone glass scratch detection;
- ◆ PCB screen printing inspection;
- ◆ Mark point positioning;
- ◆ Size measurement;
- ◆ Barcode recognition;
- ◆ QR code recognition.

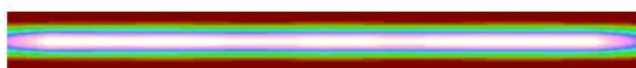
Spectral diagram



Illumination map



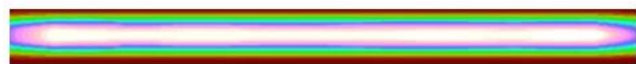
Uniformity diagram



LWD=10mm

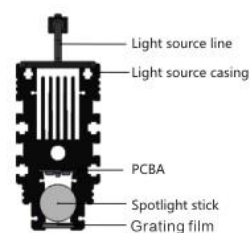


LWD=50mm



LWD=100mm

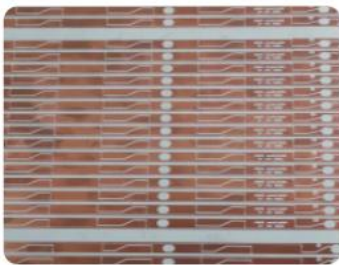
Sectional structure diagram



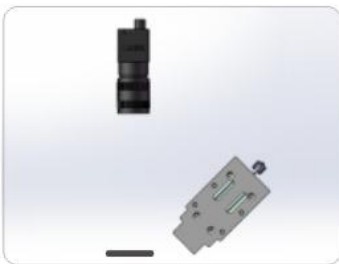
Note: This image is only for illustration purposes and may not be identical to the actual product

Wavelength/ Color Temperature	Red (R)	620–630nm	Green (G)	520–530nm
	Blue (B)	460–470nm	White (W)	6500 ± 500K
	Infrared (IR)	850/940nm	Ultraviolet (UV)	365–405nm
Save environment	humidity	–20~60℃	humidity	20~80% (non condensing)
Usage environment		0~40℃		
Select accessories	Light source extension cable			
Service life/warranty	When the ambient temperature is 25 ℃, the brightness of the light source will decrease by less than 30% after 10000 hours of use (excluding ultraviolet)			
	When the ambient temperature is 25 ℃, the 100% brightness of the ultraviolet light source will decay by less than 30% after 1000 hours of use			
	Within one year of shipment, if there is a malfunction due to non–human factors, free repair or replacement services will be provided			

Application case of line light source



Analyte

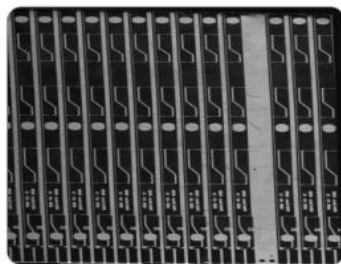


Lighting diagram

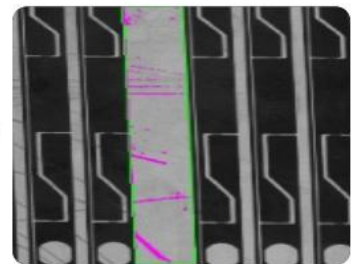


Test item: Dirty detection of circuit board

Content	Circuit board dirt detection
Tested item	Long strip circuit board
Difficulties in the plan	Large shooting format
Application	AIRON-LINEL-300-W
light sourcesresult	The dirt is clearly visible and the location of the dirt is accurately identified



Imaging rendering



Software processing rendering

Serial number	Model	Voltage	Power		Luminous surface size (mm)	Weight (g)
			R	G/B/W		
1	AIRON-LINEL-150	24	10	15	150*17	190
2	AIRON-LINEL-250	24	16.5	25	250*17	270
3	AIRON-LINEL-350	24	22	35	350*17	350
4	AIRON-LINEL-450	24	30	45	450*17	400
5	AIRON-LINEL-550	24	36	55	550*17	510
6	AIRON-LINEL-650	24	43	65	650*17	600
7	AIRON-LINEL-750	24	49	75	750*17	690
8	AIRON-LINEL-850	24	56	85	850*17	790
9	AIRON-LINEL-1600	24	85	125	1600*17	910

