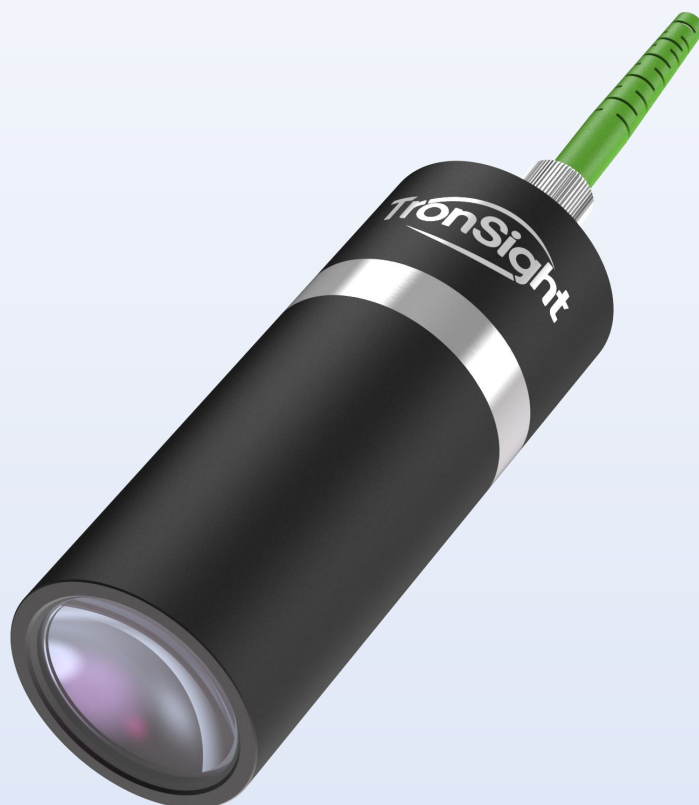


# TS-C Series Chromatic Confocal Displacement Sensor



## TS-C2000 Product Parameter



Reference Distance <sup>*1</sup>	50 mm
Measurement Range	±1 mm
Measurement Angle <sup>*2</sup>	±14°
Spot Diameter <sup>*3</sup>	Φ20/40/320 μm
Repeatability <sup>*4</sup>	85 nm
Linear Error <sup>*5</sup>	< ±0.6 μm
Outer Diameter*Length	φ34*90.7 mm
Weight	162 g
Minimum Measurable Thickness	10% of F.S.
Temperature Characteristics	≈0.1% F.S./°C
IP Grade	IP40

\*1 Calculated from the center position of the measurement range;

\*2 Tilt test using standard flat mirror at 1kHz sample frequency;

\*3 Measurement of sharp glass edges, verified with a sub-micron positioning accuracy motion platform and laser interferometer as the displacement reference, the spot diameter values correspond to the diameters of small spot/large spot/four-spot pattern;

\*4 Measurement of standard silver-coated mirror, 1kHz without averaging, root mean square deviation of 10,000 continuous data sets;

\*5 Calibration verification using high-precision nanoscale laser interferometer.

## TS-C2000 Product Dimension Drawing

