



Product Features

- ◆ The analog controller achieves stepless adjustment of light source brightness through voltage control, with a simple structure and easy operation. It is the most commonly used controller, suitable for most occasions, and also compatible with triggering function.

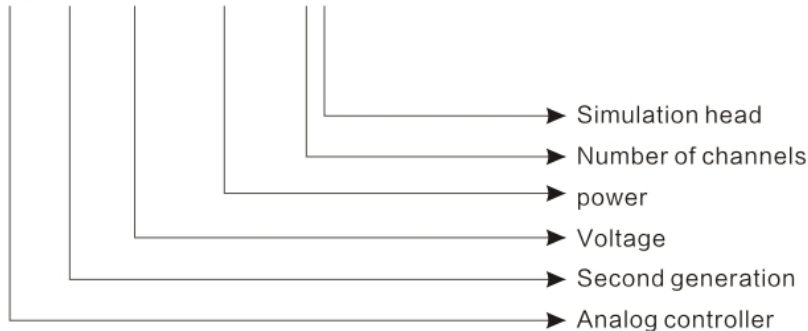
Application scope

- ◆ Stepless brightness control;
- ◆ Simple structure and good stability;
- ◆ Equipped with short-circuit protection function;
- ◆ Equipped with external triggering and high/low level switching function;
- ◆ Equipped with DIN rail buckle installation (some models) and screw fixation (remove foot pad) Two installation methods.

Product model and specifications

Model	AIRONAC2-24V120W-4T
Drive mode	constant voltage
Dimming method	Potentiometer adjustment
Input voltage	AC100-240V
Number of channels	4
Output voltage	DC24V
Total power	120W
Single channel power	72W(3A)
Output port	SM3P Female Head (1. Output+2, Empty 3, Output -)
External trigger voltage	12-24V(About5mA)
Trigger delay	<1ms
Use temperature and humidity	Temperature: 0-40 °C, humidity: 20-85% RH, non condensing)
Save temperature and humidity	Temperature: -20-60 °C, humidity: 20-85% RH, non condensing)
Cooling method	Fan
Weight	About 240g
Size	162.5*101.5*94.4mm

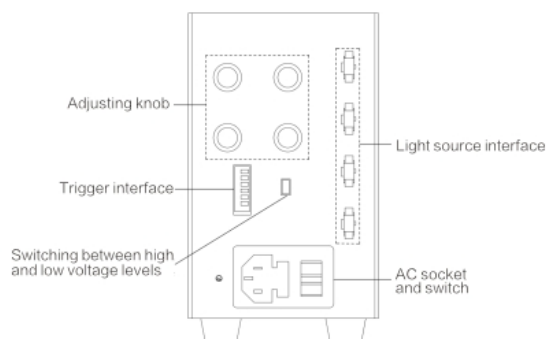
AIRONAC 2-24V 120W-4T



No	Model	Input Voltage	Output Voltage	Total Power	Channel	Adjustamen Method
1	AIRON-AC-DC12-24V-1T	12-24VDC	11.6-23.6W	11.6-23.6W	1	Voltage regulation
2	AIRON-AC-O-24V24W-1T	12-24VDC	11.6-23.6W	11.6-23.6W	1	Voltage regulation
3	AIRON-AC 2-24V24W-2T	100-240VAC	24VDC	24W	2	Voltage regulation
4	AIRON-AC 2-24V60W-2T	100-240VAC	24VDC	60W	2	Voltage regulation
5	AIRON-AC 2-24V60W-4T	100-240VAC	24VDC	60W	4	Voltage regulation
6	AIRON-AC 2-24V120W-2T	100-240VAC	24VDC	120W	2	Voltage regulation
7	AIRON-AC 2-24V120W-4T	100-240VAC	24VDC	120W	4	Voltage regulation
8	AIRON-AC 2-24V120W-8T	100-240VAC	24VDC	120W	8	Voltage regulation

Panel Description

- ◆ Adjustment knob: potentiometer adjusts the brightness of the light source;
- ◆ Trigger interface: Control the light source to turn on and off through external access of 12-24V trigger signals;
- ◆ High and low levels: H is a constant light mode, which triggers the light source to turn off; L is the constant off mode that triggers the signal light source to turn on;
- ◆ Light source interface: SM3P female head interface, with a total of 4 light source outputs, each independently controlled;
- ◆ AC socket and switch: Input voltage AC100-240V, 50/60Hz.



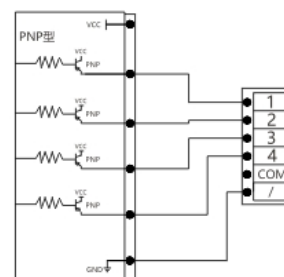
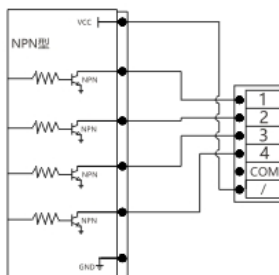
Wiring method

◆NPN type sensor:

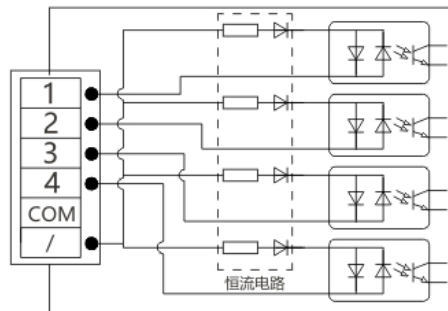
Co positive, control negative pole, triggered when sensor output is low level;

◆PNP type sensor:

Co negative, control positive pole, triggered when sensor output is high level.

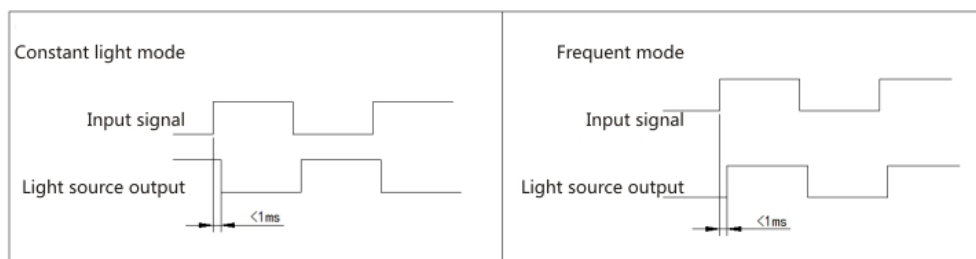


- 1: CH1 external trigger input;
- 2: CH2 external trigger input;
- 3: CH3 external trigger input;
- 4: CH4 external trigger input;
- COM: CH1-CH4 external trigger input common terminal;
- ◆ The trigger voltage of the controller is 12-24V;
- ◆ Internally, a bidirectional high-speed optocoupler is used, and the triggering signal is not polarized;
- ◆ The trigger circuit has a constant current circuit and does not require a series resistor within the 12-24V trigger voltage range.

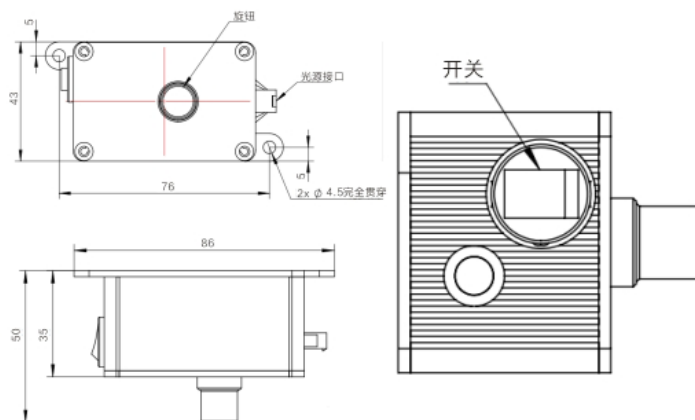
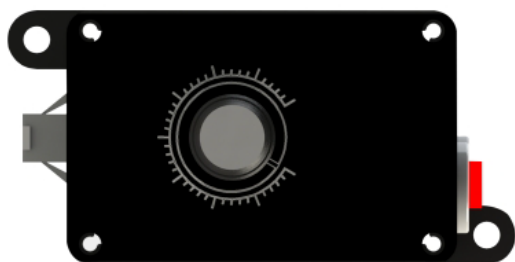


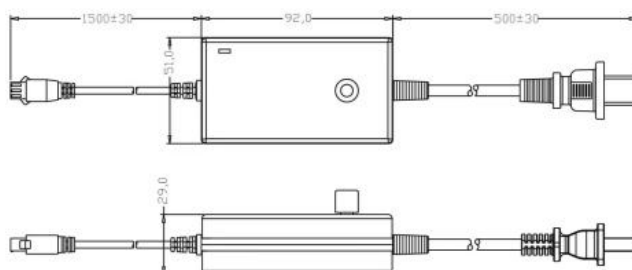
Trigger timing diagram

- ◆ Level H: Constant light mode, when there is a trigger signal, the light source will turn off;
- ◆ Level L: Constant off mode, the light source lights up when there is a trigger signal.

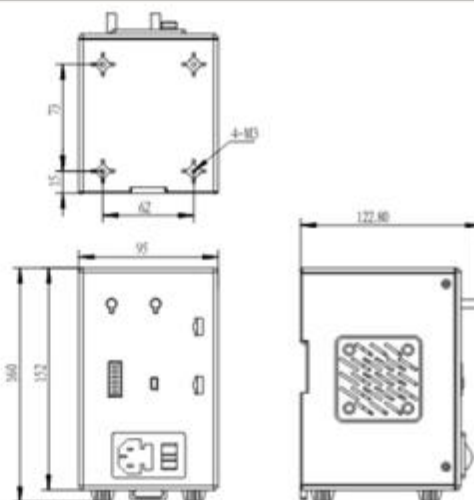


Product dimension diagram: AIRON-AC-DC12-24V-1T





Product dimension diagram: AIRON-AC 2-24V24W-2T



Product dimension diagram: AIRON-AC 2-24V60W-2T

