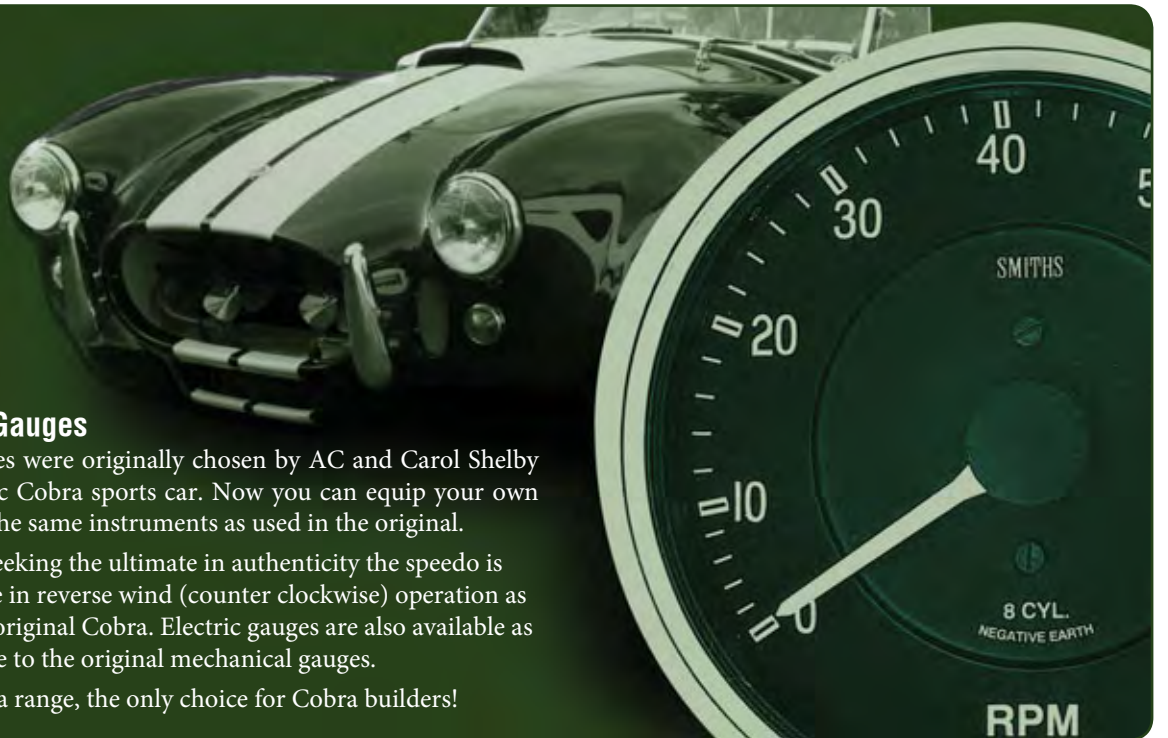


Smiths AC Cobra and GT40 Gauges

The right choice for your classic



AC Cobra Gauges

Smiths gauges were originally chosen by AC and Carol Shelby for the iconic Cobra sports car. Now you can equip your own Cobra with the same instruments as used in the original.

For people seeking the ultimate in authenticity the speedo is also available in reverse wind (counter clockwise) operation as fitted to the original Cobra. Electric gauges are also available as an alternative to the original mechanical gauges.

Smiths Cobra range, the only choice for Cobra builders!

AMMETER

AC COBRA

Part No. **AM1640-04C**

Type: Electrical
 Range: 50-0-50 Amps
 Scale: Arc
 Fitting: Spade
 Dia: 52mm
 Bezel: Chrome Full "V"
 alternative: AM1640-22C
 (Chrome 1/2 round)



[Fitting Instructions](#)

AMMETER

AC COBRA

Part No. **AM1640-07C**

Type: Electric
 Range: 50-0-50
 Scale: Arc
 Dia: 52mm
 Bezel: Chrome Full "V"
 Alternative: AM1640-23C
 (Chrome 1/2 Round)



[Fitting Instructions](#)

FUEL TANK LEVEL

AC COBRA

Part No. **BF2242-03C**

Type: Electrical
 Range: E-1/2-F Scale: Arc
 Fitting: Spade Dia: 52mm
 Bezel: Chrome Full "V"



Use Fitting Kit Part No.
 TB9006Kit or TB9013Kit

Alternative: BF2242-12C
 (Chrome 1/2 Round)

[Fitting Instructions](#)

FUEL LEVEL

AC COBRA

Part No. **ABF2242-03C**

Type: Electric
 Range: E - 1/2 - F
 Scale: Arc
 Dia: 52mm
 Bezel: Chrome Full "V"
 Alternative:
 ABF2242-04C



(Chrome 1/2 Round)

[Fitting Instructions](#)

FUEL LEVEL**AC COBRA****Part No. BF2242-32CB**Type: Stepper Electric
Range: E - 1/2 - F

Scale: Full

Dia: 52mm

Bezel: Chrome Full "V"

Use Sender Kit TB9011KIT
or TB9013KIT[Fitting Instructions](#)[Representative Image](#)**OIL PRESSURE****AC COBRA****Part No. APG1310-02C**

Type: Electrical

Range: 0 - 100 PSI Scale: Arc

Fitting: Spade Dia: 52mm

Bezel: Chrome Full "V"

Use Sender Part No.

PTR1000-6-10

Alternative: APG1310-04C

(Chrome 1/2 Round)

[Fitting Instructions](#)**OIL PRESSURE****AC COBRA****Part No. PG1310-02CB**

Type: Electric

Range: 0-100 psi Scale: Full

Dia: 52mm

Bezel: Chrome Full "V"

Use Sender Kit

PTTR2300-10-8NKIT

[Fitting Instructions](#)**OIL PRESSURE****AC COBRA****Part No. PG1310-07CB**

Type: Electric

Range: 0-100 psi

Scale: Full

Dia: 52mm

Bezel: Chrome Full "V"

Use Sender Kit

PTTR2300-10-8NKIT

[Fitting Instructions](#)**OIL PRESSURE****AC COBRA****Part No. PG1310-02C**

Type: Mechanical

Range: 0-100 PSI Scale: Full

Fitting: 1/8in NPT Dia: 52mm Bezel:

Chrome Full "V"

Use Fitting Kit Part No. LK-2

Use Sender Kit PTTR2300-10-8NKIT

Alternative: PG1310-19C

(Chrome 1/2 Round)

[Fitting Instructions](#)**FUEL PRESSURE****AC COBRA****Part No. PG1310-03CB**

Type: Stepper Electric

Range: 0 - 10 PSI

Scale: Full

Fitting: 1/8in NPT

Dia: 52mm

Bezel: Chrome Full "V"

Sender

PTTR2300-03-8NKIT required

[Fitting Instructions](#)**FUEL PRESSURE****AC COBRA****Part No. PG1310-27CB**

Type: Stepper Electric

Range: 0-100 psi

Scale: Full

Dia: 52mm

Bezel: Chrome Full "V"

Use Sender Kit

PTTR2300-10-8NKIT

[Fitting Instructions](#)**WATER TEMPERATURE****AC COBRA****Part No. TG1301-23C078**

Type: Mechanical

Range: 40-140° C Scale: Full

Fitting: 3/8BSP Dia: 52mm

Bezel: Chrome Full "V"

Capillary length 78inches.

Comes with 3/8BSP to

5/8UNF adaptor

Alternative: TG1301-45C078

(Chrome 1/2 Round)

[Fitting Instructions](#)**WATER TEMPERATURE****AC COBRA****Part No. ATG1301-23C**

Type: Electrical

Range: 50 - 140°C

Scale: Arc

Fitting: Spade Dia: 52mm

Bezel: Chrome Full "V"

Use Sender Part No. TT6811-01

Alternative: ATG1301-27C

(Chrome 1/2 Round)

[Fitting Instructions](#)**WATER TEMPERATURE****AC COBRA****Part No. TG1301-23CB**

Type: Electric

Range: 40-140° C Scale: Full

Dia: 52mm

Bezel: Chrome Full "V"

Use with Sender Part No.

TT3005-8N

Alternative: TG1301-63CB

(Chrome 1/2 Round)

[Fitting Instructions](#)

OIL TEMPERATURE**AC COBRA****Part No. TG1301-24C078**

Type: Mechanical
 Range: 40 - 140° C Scale: Full
 Fitting: 3/8BSP Dia: 52mm
 Bezel: Chrome Full "V"
 Capillary length: 78inches.
 Comes with 3/8BSP to
 5/8UNF adaptor
 Alternative: TG1301-46C078
 (Chrome 1/2 Round)
Fitting Instructions

**OIL TEMPERATURE****AC COBRA****Part No. ATG1301-24C**

Type: Electrical
 Range: 50 - 140° C
 Scale: Arc
 Fitting: Spade Dia: 52mm
 Bezel: Chrome Full "V"
 Use Sender Part No. TT6811-01
 Alternative: ATG1301-28C
 (Chrome 1/2 Round)
Fitting Instructions

**OIL TEMPERATURE****AC COBRA****Part No. TG1301-24CB**

Type: Electric
 Range: 40 - 140° C
 Scale: Full
 Dia: 52mm
 Bezel: Chrome Full "V"
 Use Sender Kit TT3005-8N
 Alternative: TG1301-65CB
 (Chrome 1/2 Round)
Fitting Instructions

**OIL TEMPERATURE****AC COBRA****Part No. TG1301-27CB**

Type: Electric
 Range: 40 - 140° C
 Scale: Full
 Dia: 52mm
 Bezel: Chrome Full "V"
 Use Sender Part No.
 TT3005-8N
Fitting Instructions

**CLOCK****AC COBRA****Part No. CA1100-09C**

Type: Electrical
 Range: 12hour
 Scale: Full
 Fitting: Spade Dia: 52mm
 Bezel: Chrome Full "V"
 Analogue Clock alternative:
 CA1100-13C (Chrome 1/2
 Round)
Fitting Instructions

**VOLTMETER****AC COBRA****Part No. ABV2220-07C**

Type: Electrical
 Range: 11 - 17 Volts
 Scale: Arc
 Fitting: Spade Dia: 52mm
 Bezel: Chrome Full "V"
 Alternative: ABV2220-18C
 (Chrome 1/2 Round)
Fitting Instructions

**TACHOMETER****AC COBRA****Part No. RVC2816-00CB**

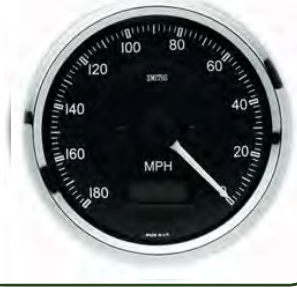
Type: Electric
 Range: 0-8000 RPM
 Scale: Full
 Fitting: Harness Dia: 100mm
 Bezel: Chrome Full "V"
 Distributor/Coil sensing
 Alternative: RVC2816-08CB
 (Chrome 1/2 Round)
Fitting Instructions

**SPEEDOMETER****AC COBRA****Part No. SN5346-04CB**

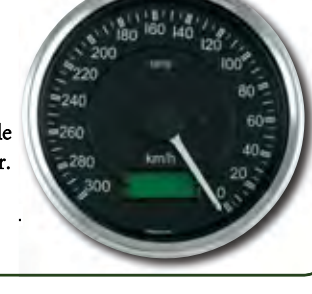
Type: Electric
 Range: 0-160 mph
 Scale: Full
 Dia: 100mm
 Bezel: Chrome Full "V"
 Alternative: SN5346-20CB
 (Chrome 1/2 Round)
Fitting Instructions

**SPEEDOMETER****AC COBRA****Part No. SN5346-02CB**

Type: Electric
 Range: 0-180 mph
 Scale: Full
 Dia: 100mm
 Bezel: Chrome Full "V"
 Alternative: SN5346-19CB
 (Chrome 1/2 Round)
Fitting Instructions

**SPEEDOMETER****AC COBRA****Part No. SN5346-03CB**

Type: Electrical
 Range: 0 - 300 kph Scale: Full
 Fitting: Harness Dia: 100mm
 Bezel: Chrome Anticlockwise
 Direction. Electronic Programmable
 calibration. 6 digit LED odometer.
 Alternative: SN5346-21CB
 (Chrome 1/2 Round)
Fitting Instructions



SPEEDOMETER**AC COBRA****Part No. SN5346-05CB**

Type: Electronic
 Range: 0 - 300 kph Scale: Full
 Fitting: Harness Dia: 100mm
 Bezel: Chrome Full "V"
 Clockwise Direction.
 Electronic Programable calibration.
 6 digit LED odometer.
 Alternative: SN5346-22CB
 (Chrome 1/2 Round)
Fitting Instructions

**SPEEDOMETER****AC COBRA****Part No. SN5346-02**

Type: Mechanical
 Range: 0-180 mph
 Scale: Full
 Dia: 100mm
 Bezel: Chrome Full "V"
 Alternative: SN5346-19
 (Chrome 1/2 Round)
Fitting Instructions

**SPEEDOMETER****AC COBRA****Part No. SN5346-04**

Type: Mechanical
 Range: 0-160 mph
 Scale: Full
 Dia: 100mm
 Bezel: Chrome Full "V"
 Alternative: SN5346-20
 (Chrome 1/2 Round)
Fitting Instructions:

**SPEEDOMETER****AC COBRA****Part No. SN5346-12**

Type: Mechanical
 Range: 0-300 kph
 Scale: Full
 Dia: 100mm
 Bezel: Chrome Full "V"
Fitting Instructions:





GT40 Gauges

The GT40 is a motor racing icon that achieved legendary victories at Le Mans. Every GT40 was equipped with gauges from Smiths.

The classic lines of the black bezels, red sector tacho and 200mph speedo are combined with the GT40 font

Your GT40 project deserves gauges that meet the requirements of low volume compliance.

AMMETER

GT40

Part No. **AM1640-16B**

Type: Electrical
 Range: -50 - 0 - 50 Amps
 Scale: Arc
 Fitting: Spade
 Dia: 52mm
 Bezel: Chrome 1/2 "V"

Fitting Instructions



OIL PRESSURE

GT40

Part No. **PG1310-09B**

Type: Mechanical
 Range: 0 - 100 PSI
 Scale: Full
 Fitting: 1/8in NPT Dia: 52mm
 Bezel: Black 1/2 "V"
 Use Fitting Kit Part No. LK-2
 Use Sender Kit

PTTR2300-10-8NKIT

Fitting Instructions



FUEL TANK LEVEL

GT40

Part No. **ABF2242-15B**

Type: Electrical
 Range: E - 1/2 - F
 Scale: Full
 Fitting: Spade
 Dia: 52mm
 Bezel: Black 1/2 "V"
 Use sender TB9011KIT or TB9013I

Fitting Instructions



OIL PRESSURE

GT40

Part No. **PG1310-09BB**

Type: Electric
 Range: 0 - 100 PSI
 Scale: Full
 Dia: 52mm
 Bezel: Black 1/2 "V"
 Use Sender Kit

PTTR2300-10-8NKIT

Fitting Instructions



SPEEDOMETER

GT40

Part No. **SN3327-00**

Type: Mechanical
 Range: 200 mph
 Scale: Full
 Fitting:
 Dia: 100mm
 Bezel: Black 1/2
 "V" (1184 turns per mile
 input) mph scale only

Fitting Instruction



SPEEDOMETER

GT40

Part No. **SN3327-03**

Type: Mechanical
 Range: 320kph/ 200 mph
 Scale: Full
 Dia: 100mm
 Bezel: Black 1/2 "V"
 1184 turns per mile

Fitting Instructions



SPEEDOMETER**GT40****Part No. SN3327-04BB**

Type: Electronic
 Programmable Range: 320
 kph / 200 mph Scale: Full
 Fitting: Harness
 Dia: 100mm
 Bezel: Black 1/2 "V"
 kphouter/mpg inner scale
Fitting Instructions

**SPEEDOMETER****GT40****Part No. SN3327-02BB**

Type: Electronic
 Range: 0-200 mph
 Scale: Full
 Dia: 100mm
 Bezel: Black 1/2 "V"
Fitting Instructions

**TACHOMETER****GT40****Part No. RVC2816-04BB**

Type: Electrical
 Range: 8000 RPM
 Scale: Full
 Fitting: Harness
 Dia: 100mm
 Bezel: Black 1/2 "V"
 Red sector 6500 - 7000rpm
Fitting Instructions

**TACHOMETER****GT40****Part No. RVC2816-06BB**

Type: Electric
 Range: 0-8000RPM
 Scale: Full
 Dia: 100mm Bezel:
 Black 1/2 "V"
Fitting Instructions

**WATER TEMPERATURE****GT40****Part No. TG1301-30B078**

Type: Mechanical
 Range: 30 - 120° C
 Scale: Full
 Fitting: 3/8BSP
 Dia: 52mm
 Bezel: Black 1/2 "V"
 Capillary length 78in. Comes
 with 3/8BSP to 5/8UNF adaptor
Fitting Instructions:

**WATER TEMPERATURE****GT40****Part No. TG1301-30B120**

Type: Mechanical
 Range: 30 - 120° C
 Scale: Full
 Fitting: 3/8BSP Dia: 52mm
 Bezel: Black 1/2 "V"
 Capillary length 120in. Comes
 with 3/8BSP to 5/8UNF adaptor
Fitting Instructions:

**WATER TEMPERATURE****GT40****Part No. TG1301-30BB**

Type: Electric
 Range: 30 - 120° C
 Scale: Full
 Dia: 52mm
 Bezel: Black 1/2 "V"
 Use Sender Part No.
 TT3001-8N
Fitting Instructions

**OIL TEMP****GT40****Part No. TG1301-31B078**

Type: Mechanical
 Range: 40 - 140° C Scale: Full
 Fitting: 3/8BSP Dia: 52mm
 Bezel: Black 1/2 "V"
 Capillary length 78in.
 Comes with 3/8BSP to 5/8UNF
 adaptor
 Use Sender Kit TT3005-8N
Fitting Instructions

**OIL TEMPERATURE****GT40****Part No. TG1301-31B120**

Type: Mechanical
 Range: 40 - 140° C
 Scale: Full
 Fitting: 3/8BSP Dia: 52mm
 Bezel: Black 1/2 "V"
 Capillary length 120in. Comes
 with 3/8BSP to 5/8UNF adaptor
 Use Sender Kit TT3005-8N
Fitting Instructions

**OIL TEMPERATURE****0****Part No. TG1301-31BB**

Type: Electric
 Range: 40 - 140° C
 Scale: Full
 Dia: 52mm
 Bezel: Black 1/2 "V"
 Use Sender Par No.
 TT3005-8N
Fitting Instructions



CLOCK**GT40****Part No.** EAC1-1052-95B

Type: Electrical

Scale: ANALOGUE

Fitting: Spade

Dia: 52mm

Bezel: BLACK 1/2 "V"

Fitting Instructions

**VOLTMETER****GT40****Part No** ABV2220-11B

Type: Electrical

Range:

Scale: Arc

Dia: 52mm Bezel:

Black 1/2 "V"

Fitting Instructions

