

## OUR MOST POPULAR DUAL GAUGES



### TEMPERATURE BULB TYPES A2 & K2



A2



K2

### TEMPERATURE BULB TYPES A2 & K2

#### A2 BULB

Common in A & B Series Engines the bulb has a tapered seating and a 5/8 x 18 UNF Male Nut.

Y ^ A ^ & { { ^ } a ^ a ^ J F I A i a e • A e a d i A i A a A [ [ a ^ a ^ a ^ a ^ c i A c i ) a ^ a ^ a ^ a ^ & A a a A • d ] A @ A a ^ A ^ A ^ • a ^ a ^ d A @ A @ a a

#### K2 BULB

Common in Big Healey, Jaguar etc the bulb has a 3/8 Female Nut.

It is supplied with either; a 3/8 BSP Male to 5/8 x 18 Male (#31-363-415); or a 3/8 BSP Male to 3/8 NPT Male (#31-363-472-00)



**Note:** Pictures with a red star are a representative image. Refer to the left for accurate details. For more information please contact us.

### OIL PRESSURE & WATER TEMP DUAL GAUGES

Part No. **GD1310-11C078**

Type: Mechanical  
Range: 0-100psi/30-110°C  
Scale: Arc  
Dia: 52 mm  
Bezel: Chrome Half "V"  
Bulb: K  
Capillary length: 78 inches  
Dial: Black  
Oil Pressure Kit: LK-2 required  
**Fitting Instructions**



### OIL PRESSURE & WATER TEMP DUAL GAUGES

Part No. **GD1310-00C078**

Type: Mechanical  
Range: 0-100 psi/30-110°C  
Scale: Arc  
Dia: 52mm  
Bezel: Black Half "V"  
Bulb: A2  
Capillary length: 78 inches  
Dial: Black  
Oil Pressure Kit: LK-2 required  
**Part No. GD1310-00B078**  
**Fitting Instructions**



### OIL PRESSURE & WATER TEMP DUAL GAUGES

Part No. **GD1301-62C078**

Type: Mechanical  
Range: 0-100psi/30-110°C  
Scale: Arc  
Dia: 52 mm  
Bezel: Black Half "V"  
Bulb: A2  
Capillary length: 78 inches  
Dial: Black  
Oil Pressure Kit: LK-2 required  
**Fitting Instructions**



### OIL PRESSURE & WATER TEMP DUAL GAUGES

Part No. **GD1301-65C078**

Type: Mechanical  
Range: 0-100psi/30-230°F Scale: Arc  
Dia: 52mm  
Bezel: Chrome Full "V"  
Bulb: K  
Capillary length: 78 inches  
Dial: Magnolia  
Oil Pressure Kit: LK-2 required  
**Fitting Instructions**



## DUAL GAUGES CLASSIC IMPERIAL



### OIL PRESSURE & WATER TEMP DUAL GAUGES

**Dual Gauges SMITHS**  
Classic dual oil and water  
41-712-101-189



### OIL PRESSURE & WATER TEMP DUAL GAUGES

**Part No. GD1301-150B055**

Type: Mechanical  
Range: 0-100 psi/90-230°F  
Scale: Arc  
Dia: 52mm  
Bezel: Black Full "V"  
Bulb: K  
Capillary length: 55 inches  
Dial: Black  
Oil Pressure Kit: LK-2 required  
[Fitting Instructions](#)



### OIL PRESSURE & WATER TEMP DUAL GAUGES

**Part No. GD1301-15-078**

Type: Mechanical  
Range: 0-100 psi/90-230°F  
Scale: Arc  
Dia: 52mm  
Bezel: Black Half "V"  
Bulb: A2  
Capillary length: 78 inches  
Dial: Black  
Oil Pressure Kit: LK-2 required  
[Fitting Instructions](#)



### OIL PRESSURE & WATER TEMP DUAL GAUGES

**Part No. GD1301-15C078**

Type: Mechanical  
Range: 0-100 psi/90-230°F  
Scale: Arc  
Dia: 52mm  
Bezel: Chrome & Half "V"  
Bulb: A2  
Capillary length: 78 inches  
Dial: Black  
Oil Pressure Kit: LK-2 required  
[Fitting Instructions](#)



### OIL PRESSURE & WATER TEMP DUAL GAUGES

**Part No. GD1310-00B078**

Type: Mechanical  
Range: 0-100 psi/30-110°C  
Scale: Arc  
Dia: 52mm  
Bezel: Black Half "V"  
Bulb: A2  
Capillary length: 78 inches  
Dial: Black  
Oil Pressure Kit: LK-2 required  
[Fitting Instructions](#)



### OIL PRESSURE & WATER TEMP DUAL GAUGES

**Part No. GD1310-00C078**

Type: Mechanical  
Range: 0-100 psi/30-110°C  
Scale: Arc  
Dia: 52mm  
Bezel: Black & Half "V"  
Bulb: A2  
Capillary length: 78 inches  
Dial: Black  
Oil Pressure Kit: LK-2 required  
Part No. [GD1310-00B078](#)  
[Fitting Instructions](#)



### OIL PRESSURE & WATER TEMP DUAL GAUGES

**Part No. GD1301-89C078**

Type: Mechanical  
Range: 0-100 psi/30-110°C  
Scale: Arc  
Dia: 52 mm  
Bezel: Black Full "V"  
Bulb: K  
Capillary length: 78 inches  
Dial: Black  
Oil Pressure Kit: LK-2 required  
[Fitting Instructions](#)



### OIL PRESSURE & WATER TEMP DUAL GAUGES

**Part No. GD1310-11C078**

Type: Mechanical  
Range: 0-100 psi/30-110°C  
Scale: Arc  
Dia: 52 mm  
Bezel: Chrome & Half "V"  
Bulb: K  
Capillary length: 78 inches  
Dial: Black  
Oil Pressure Kit: LK-2 required  
[Fitting Instructions](#)



## DUAL GAUGES CLASSIC METRIC



### OIL PRESSURE & WATER TEMP DUAL GAUGES

Dual Gauges SMITHS  
Classic dual oil and water  
41-712-101-161



### OIL PRESSURE & WATER TEMP DUAL GAUGES

Part No. **GD1301-66B078**

Type: Mechanical  
Range: 0-7kg/cm<sup>2</sup>/ 30-110°C  
Scale: Arc  
Dia: 52mm  
Bezel: Black & Half "V"  
Bulb: K  
Capillary length: 78 inches  
Dial: Black  
Oil Pressure Kit: LK-2 required  
[Fitting Instructions](#)



### OIL PRESSURE & WATER TEMP DUAL GAUGES

Part No. **GD1301-20C078**

Type: Mechanical  
Range: 0-7kg/cm<sup>2</sup>/ 30-110°C  
Scale: Arc  
Dia: 52mm  
Bezel: Chrome & Half "V"  
Bulb: A2  
Capillary length: 78 inches  
Dial: Black  
Oil Pressure Kit: LK-2 required  
[Fitting Instructions](#)



### OIL PRESSURE & WATER TEMP DUAL GAUGES

Part No. **GD1310-00C039**

Type: Mechanical  
Range: 0-7kg/cm<sup>2</sup>/ 30-110°C  
Scale: Arc  
Dia: 52mm  
Bezel: Chrome & Half "V"  
Bulb: A2  
Capillary length: 39 inches  
Dial: Black  
Oil Pressure Kit: LK-2 required  
[Fitting Instructions](#)



### OIL PRESSURE & WATER TEMP DUAL GAUGES

**Dual Gauges SMITHS**  
Classic dual oil and water  
41-712-101-267



### OIL PRESSURE & WATER TEMP DUAL GAUGES

**Part No. GD1301-89B078**  
Type: Mechanical  
Range: 30-110°C/0-100psi  
Scale: Arc  
Dia: 52mm  
Bezel: Black Full "V"  
Bulb: K  
Capillary length: 78 inches  
Dial: Black  
Oil Pressure Kit: LK-2 required  
[Fitting Instructions](#)



### OIL PRESSURE & WATER TEMP DUAL GAUGES

**Part No. GD1301-89C078**  
Type: Mechanical  
Range: 0-100 psi/ 30-110 °C  
Scale: Arc  
Dia: 52 mm  
Bezel: Black Full "V"  
Bulb: K  
Capillary length: 78 inches  
Dial: Black  
Oil Pressure Kit: LK-2 required  
[Fitting Instructions](#)



### OIL PRESSURE & WATER TEMP DUAL GAUGES

**Part No. GD1310-13B078**  
Type: Mechanical  
Range: 0-100psi/30-110°C  
Scale: Arc  
Dia: 52mm  
Bezel: Black Full "V"  
Bulb: K  
Capillary length: 78 inches  
Dial: Black  
Oil Pressure Kit: LK-2 required  
[Fitting Instructions](#)



### OIL PRESSURE & WATER TEMP DUAL GAUGES

**Part No. GD1310-01C120**  
Type: Mechanical  
Range:  
Scale: Arc  
Dia: 52mm  
Bezel: Chrome Full "V"  
Bulb: K  
Capillary length: 120 inches  
Dial: Black  
Oil Pressure Kit: LK-2 required  
[Fitting Instructions](#)



### OIL PRESSURE & WATER TEMP DUAL GAUGES

**Part No. GD1310-11C078**  
Type: Mechanical  
Range: 0-100psi/30-110°C  
Scale: Arc  
Dia: 52 mm  
Bezel: Chrome Half "V"  
Bulb: K  
Capillary length: 78 inches  
Dial: Black  
Oil Pressure Kit: LK-2 required  
[Fitting Instructions](#)



### OIL PRESSURE & WATER TEMP DUAL GAUGES

**Part No. GD1310-00B078**  
Type: Mechanical  
Range: 0-100 psi/30-110°C  
Scale: Arc  
Dia: 52mm  
Bezel: Black Half "V"  
Bulb: A2  
Capillary length: 78 inches  
Dial: Black  
Oil Pressure Kit: LK-2 required  
[Fitting Instructions](#)



### OIL PRESSURE & WATER TEMP DUAL GAUGES

**Part No. GD1310-00C078**  
Type: Mechanical  
Range: 0-100 psi/30-110°C  
Scale: Arc  
Dia: 52mm  
Bezel: Black Half "V"  
Bulb: A2  
Capillary length: 78 inches  
Dial: Black  
Oil Pressure Kit: LK-2 required  
Part No. GD1310-00B078  
[Fitting Instructions](#)



### OIL PRESSURE & WATER TEMP DUAL GAUGES

**Part No. GD1310-00C120**  
Type: Mechanical  
Range: 0-100psi/ 30-110 °C  
Scale: Arc  
Dia: 52 mm  
Bezel: Chrome Half "V"  
Bulb: A2  
Capillary length: 120 inches  
Dial: Black  
Oil Pressure Kit: LK-2 required  
[Fitting Instructions](#)



### OIL PRESSURE & WATER TEMP DUAL GAUGES

**Part No. GD1310-05C078**  
Type: Mechanical  
Range: 0-100psi/ 30-110°C  
Scale: Arc  
Dia: 52mm  
Bezel: Chrome Half "V"  
Bulb: A2  
Capillary length: 78 inches  
Dial: Black  
Oil Pressure Kit: LK-2 required  
[Fitting Instructions](#)



### OIL PRESSURE & WATER TEMP DUAL GAUGES

Dual Gauges SMITHS  
Classic dual oil and water  
41-712-101-277



### OIL PRESSURE & WATER TEMP DUAL GAUGES

Part No. **GD1301-69C078**

Type: Mechanical  
Range: 0-100psi/90-230°F  
Scale: Arc  
Dia: 52 mm  
Bezel: Chrome Half Round  
Bulb: K  
Capillary length: 78 inches  
Dial: Black  
Oil Pressure Kit: LK-2 required  
[Fitting Instructions](#)



### OIL PRESSURE & WATER TEMP DUAL GAUGES

Part No. **GD1301-83C078**

Type: Mechanical  
Range: 0-100psi/90-230°F  
Scale: Arc  
Dia: 52mm  
Bezel: Chrome Half Round  
Bulb: K  
Capillary length: 78 inches  
Dial: Black  
Oil Pressure Kit: LK-2 required  
[Fitting Instructions](#)



### OIL PRESSURE & WATER TEMP DUAL GAUGES

Part No. **GD1301-88C078**

Type: Mechanical  
Range: 0-100 psi/90-230°F  
Scale: Arc  
Dia: 52 mm  
Bezel: Chrome Full "V"  
Bulb: K  
Capillary length: 78 inches  
Dial: Black  
Oil Pressure Kit: LK-2 required  
[Fitting Instructions](#)



### OIL PRESSURE & WATER TEMP DUAL GAUGES

Part No. **GD1301-64B078**

Type: Mechanical  
Range: 90-230°F/0-100psi  
Scale: Arc  
Dia: 52mm  
Bezel: Black Half "V"  
Bulb: K  
Capillary length: 78 inches  
Dial: Black  
Oil Pressure Kit: LK-2 required  
[Fitting Instructions](#)



### OIL PRESSURE & WATER TEMP DUAL GAUGES

Part No. **GD1301-64C039**

Type: Mechanical  
Range: 90-230°F/0-100psi  
Scale: Arc  
Dia: 52mm  
Bezel: Chrome Half "V"  
Bulb: K  
Capillary length: 39 inches  
Dial: Black  
Oil Pressure Kit: LK-2 required  
[Fitting Instructions](#)



### OIL PRESSURE & WATER TEMP DUAL GAUGES

Part No. **GD1301-64C078**

Type: Mechanical  
Range: 90-230°F/0-100psi  
Scale: Arc  
Dia: 52mm  
Bezel: Chrome Half "V"  
Bulb: K  
Capillary length: 78 inches  
Dial: Black  
Oil Pressure Kit: LK-2 required  
[Fitting Instructions](#)



### OIL PRESSURE & WATER TEMP DUAL GAUGES

Part No. **GD1301-64C020**

Type: Mechanical  
Range: 90-230°F/0-100psi  
Scale: Arc  
Dia: 52mm  
Bezel: Chrome Half "V"  
Bulb: K  
Capillary length: 20 inches  
Dial: Black  
Oil Pressure Kit: LK-2 required  
[Fitting Instructions](#)



### OIL PRESSURE & WATER TEMP DUAL GAUGES

Dual Gauges SMITHS  
Classic dual oil and water  
41-712-101-351



### OIL PRESSURE & WATER TEMP DUAL GAUGES

Part No. **GD1310-25C078**

Type: Mechanical  
Range: 0-100psi/30-110°C  
Scale: Arc  
Dia: 52mm  
Bezel: Chrome Half "V"  
Bulb: A2  
Capillary length: 78 inches  
Dial: Black  
Oil Pressure Kit: LK-2 required  
[Fitting Instructions](#)



## DUAL GAUGES classic open wheelers



### OIL PRESSURE & OIL TEMP DUAL GAUGES

**Dual Gauges SMITHS**  
Classic dual oil and oil  
41-712-101-337



### OIL PRESSURE & OIL TEMP DUAL GAUGES

**Part No. GD1500-118-C078**

Type: Mechanical  
Range: 0-160psi/30-120°C  
Scale: Arc  
Dia: 52mm  
Bezel: Chrome Full "V"  
Bulb: K  
Capillary length: 78 inches  
Dial: Black  
Oil Pressure Kit: LK-2 required  
[Fitting Instructions](#)



### OIL PRESSURE & OIL TEMP DUAL GAUGES

**Part No. GD1500-118-C096**

Type: Mechanical  
Range: 0-160 psi/ 30-120°C  
Scale: Arc  
Dia: 52mm  
Bezel: Chrome Full "V"  
Bulb: K  
Capillary length: 96 inches  
Dial: Black  
Oil Pressure Kit: LK-2 required  
[Fitting Instructions](#)



### OIL PRESSURE & OIL TEMP DUAL GAUGES

**Part No. GD1500-37C078**

Type: Mechanical  
Range: 0-160 psi/ 30-120 °C  
Scale: Arc  
Dia: 52mm  
Bezel: Chrome Full "V"  
Bulb: K  
Capillary length: 78 inches  
Dial: Black  
Oil Pressure Kit: LK-2  
required [Fitting Instructions](#)



### OIL PRESSURE & WATER TEMP DUAL GAUGES

**Dual Gauges SMITHS**  
Classic dual oil and water  
41-712-101-339



### OIL PRESSURE & WATER TEMP DUAL GAUGES

**Part No. GD1310-17B078**

Type: Mechanical  
Range: 0-100 psi/ 30-110 °C  
Scale: Arc  
Dia: 52mm  
Bezel: Black Full "V"  
Bulb: K  
Capillary length: 78 inches  
Dial: Black  
Oil Pressure Kit: LK-2 required  
[Fitting Instructions](#)



### OIL PRESSURE & WATER TEMP DUAL GAUGES

**Part No. GD1310-17B090**

Type: Mechanical  
Range: 0-100 psi/ 30-110 °C  
Scale: Arc  
Dia: 52mm  
Bezel: Black Full "V"  
Bulb: K  
Capillary length: 90 inches  
Dial: Black  
Oil Pressure Kit: LK-2 required  
[Fitting Instructions](#)



## DUAL GAUGES classic open wheelers



### FULE PRESSURE & WATER TEMP DUAL GAUGE

Dual Gauges SMITHS  
Classic dual fuel and  
water 41-712-101-343



### FUEL PRESSURE & WATER TEMP DUAL GAUGE

Part No. **GD1500-119-C072**

Type: Mechanical  
Range: 0-160 psi/ 30-120°C  
Scale: Arc  
Dia: 52 mm  
Bezel: Chrome Full "V"  
Bulb: K  
Capillary length: 72 inches  
Dial: Black  
Oil Pressure Kit: LK-2 required  
[Fitting Instructions](#)



### FUEL PRESSURE & WATER TEMP DUAL GAUGE

Part No. **GD1500-37C0105**

Type: Mechanical  
Range: 30-120°C/0-160psi  
Scale: Arc  
Dia: 52mm  
Bezel: Chrome Full "V"  
Bulb: K  
Capillary length: 105 inches  
Dial: Black  
Oil Pressure Kit: LK-2 required  
[Fitting Instructions](#)



### FUEL PRESSURE & WATER TEMP DUAL GAUGE

Part No. **GD1500-37C072**

Type: Mechanical  
Range: 0-160psi/30-120°C  
Scale: Arc  
Dia: 52 mm  
Bezel: Chrome Half "V"  
Bulb: K  
Capillary length: 72 inches  
Dial: Black  
Oil Pressure Kit: LK-2 required  
[Fitting Instructions](#)



### PRESSURE & TEMP DUAL GAUGES

Dual Gauges SMITHS  
Classic dual oil and water  
41-712-101-238



### PRESSURE & TEMP DUAL GAUGES

Part No. **GD1310-04B078**

Type: Mechanical  
Range: 0-160 psi/30-120°C  
Scale: Arc  
Dia: 52mm  
Bezel: Black Full "V"  
Bulb: K  
Capillary length: 78 inches  
Dial: Black  
Oil Pressure Kit: LK-2 required  
[Fitting Instructions](#)



### PRESSURE & TEMP DUAL GAUGES

Part No. **GD1310-04B096**

Type: Mechanical  
Range: 0-160 psi/ 30-120°C  
Scale: Arc  
Dia: 52 mm  
Bezel: Black Full "V"  
Bulb: K  
Capillary length: 96 inches  
Dial: Black  
Oil Pressure Kit: LK-2 required  
[Fitting Instructions](#)



### PRESSURE & TEMP DUAL GAUGES

Part No. **GD1310-04B144**

Type: Mechanical  
Range: 0-160psi/30-120°C  
Scale: Arc  
Dia: 52mm  
Bezel: Black Full "V"  
Bulb: K  
Capillary length: 144 inches  
Dial: Black  
Oil Pressure Kit: LK-2 required  
[Fitting Instructions](#)



## DUAL GAUGES classic open wheelers



### PRESSURE & TEMP DUAL GAUGES

Part No. **GD1500-116B078**

Type: Mechanical  
 Range: 0-160psi/ 30-120°C  
 Scale: Arc  
 Dia: 52mm  
 Bezel: Black Full "V"  
 Bulb: K  
 Capillary length: 78 inches  
 Dial: Black  
 Oil Pressure Kit: LK-2  
 required [Fitting Instructions](#)



### PRESSURE & TEMP DUAL GAUGES

Part No. **GD1500-116B086**

Type: Mechanical  
 Range: 0-160psi/30-120°C  
 Scale: Arc  
 Dia: 52 mm  
 Bezel: Black Full "V"  
 Bulb: K  
 Capillary length: 86 inches  
 Dial: Black  
 Oil Pressure Kit: LK-2  
 required [Fitting Instructions](#)



### PRESSURE & TEMP DUAL GAUGES

Part No. **GD1500-116B115**

Type: Mechanical  
 Range: 0-160psi/30-120°C  
 Scale: Arc  
 Dia: 52mm  
 Bezel: Black Full "V"  
 Bulb: K  
 Capillary length: 115 inches  
 Dial: Black  
 Oil Pressure Kit: LK-2 required  
[Fitting Instructions](#)



### PRESSURE & TEMP DUAL GAUGES

Part No. **GD1310-04C022**

Type: Mechanical  
 Range: 0-160 psi/ 30-120°C  
 Scale: Arc  
 Dia: 52 mm  
 Bezel: Chrome Full "V"  
 Bulb: K  
 Capillary length: 22 inches  
 Dial: Black  
 Oil Pressure Kit: LK-2 required  
[Fitting Instructions](#)



### PRESSURE & TEMP DUAL GAUGES

Part No. **GD1310-23C078**

Type: Mechanical  
 Range: 0-160psi/30-120°C  
 Scale: Arc  
 Dia: 52mm  
 Bezel: Chrome Half "V"  
 Bulb: K  
 Capillary length: 78 inches  
 Dial: Black  
 Oil Pressure Kit: LK-2  
 required [Fitting Instructions](#)



### OIL PRESSURE & OIL TEMP LOTUS

Part No. **GD1500-37-EX**

Type: Mechanical  
 Range: 0-160psi/ 30-120°C  
 Scale: Arc  
 Dia: 52mm  
 Bezel: Chrome Full "V"  
 Dial: Black  
[Fitting Instructions](#)



### OIL PRESSURE & OIL TEMP LOTUS

Part No. **GD1500-37XC072**

Type: Mechanical  
 Range: 0-160psi/ 30-120°C  
 Scale: Arc  
 Dia: 52mm  
 Bezel: Chrome Full "V"  
 Dial: Black  
 Capillary Length: 72 inches  
[Fitting Instructions](#)





## CLASSIC DUAL GAUGES MAGNOLIA IMPERIAL



### OIL PRESSURE & WATER TEMP DUAL GAUGES

**Dual Gauges SMITHS  
Classic dual oil and water  
Magnolia  
41-712-101-275**



### OIL PRESSURE & WATER TEMP DUAL GAUGES

**Part No. GD1301-68C078**

Type: Mechanical

Range: 0-100psi/90-230°F

Scale: Arc

Dia: 52 mm

Bezel: Chrome Half Round

Bulb: K

Capillary length: 78 inches

Dial: Magnolia

Oil Pressure Kit: LK-2

required [Fitting Instructions](#)



### OIL PRESSURE & WATER TEMP DUAL GAUGES

**Part No. GD1301-84C078**

Type: Mechanical

Range: 0-100 psi/ 90-230 °F

Scale: Arc

Dia: 52 mm

Bezel: Chrome Half Round

Bulb: K

Capillary length: 78 inches

Dial: Magnolia

Oil Pressure Kit: LK-2

required [Fitting Instructions](#)



### OIL PRESSURE & WATER TEMP DUAL GAUGES

**Part No. GD1301-65C078**

Type: Mechanical

Range: 0-100psi/90-230°F

Scale: Arc

Dia: 52mm

Bezel: Chrome Full "V"

Bulb: K

Capillary length: 78 inches

Dial: Magnolia

Oil Pressure Kit: LK-2

required [Fitting Instructions](#)



### OIL PRESSURE & WATER TEMP DUAL GAUGES

**Part No. GD1301-70C078**

Type: Mechanical

Range: 0-100 psi/ 90-230°F

Scale: Arc

Dia: 52mm

Bezel: Chrome Half "V"

Bulb: K

Capillary length: 78 inches

Dial: Magnolia

Oil Pressure Kit: LK-2 required

[Fitting Instructions](#)



### OIL PRESSURE & WATER TEMP DUAL GAUGES

**Part No. GD1301-97C078**

Type: Mechanical

Range: 0-100psi/90-230°F

Scale: Arc

Dia: 52mm

Bezel: Chrome Full "V"

Bulb: A2

Capillary length: 78 inches

Dial: Magnolia

Oil Pressure Kit: LK-2 required

[Fitting Instructions](#)



## DUAL GAUGES MGA MIDGET & HEALEY SPRITE



### OIL PRESSURE & WATER TEMP DUAL GAUGES

**Dual Gauges SMITHS**  
MG dual oil and water  
41-712-101-174



### OIL PRESSURE & WATER TEMP DUAL GAUGES

**Part No. GD1301-86B078**

Type: Mechanical  
Range: 0-100psi/90-230°F  
Scale: Arc  
Dia: 52 mm  
Bezel: Black & Half "V"  
Bulb: K  
Capillary length: 78 inches  
Dial: Black  
Oil Pressure Kit: LK-2 required  
[Fitting Instructions](#)



### OIL PRESSURE & WATER TEMP DUAL GAUGES

**Part No. GD1301-86C078**

Type: Mechanical  
Range: 0-100 psi/ 90-230°F  
Scale: Arc  
Dia: 52mm  
Bezel: Chrome & Half "V"  
Bulb: K  
Capillary length: 78 inches  
Dial: Black  
Oil Pressure Kit: LK-2 required  
[Fitting Instructions](#)



### OIL PRESSURE & WATER TEMP DUAL GAUGES

**Part No. GD1301-61-078**

Type: Mechanical  
Range: 90-230°F/0-100psi  
Scale: Arc  
Dia: 52mm  
Bezel: Black & Half "V"  
Bulb: A2  
Capillary length: 78 inches  
Dial: Black  
Oil Pressure Kit: LK-2 required  
[Fitting Instructions](#)



### OIL PRESSURE & WATER TEMP DUAL GAUGES

**Part No. GD1301-93B078**

Type: Mechanical  
Range:  
Scale: Arc  
Dia: 52mm  
Bezel: Black Half "V"  
Bulb: A2  
Capillary length: 78 inches  
Dial: Black  
Oil Pressure Kit: LK-2 required  
[Fitting Instructions](#)



### OIL PRESSURE & WATER TEMP DUAL GAUGES

**Part No. GD1301-63C072**

Type: Mechanical  
Range: 0-100 psi/ 90-230°F  
Scale: Arc  
Dia: 52mm  
Bezel: Chrome & Half "V"  
Bulb: A2  
Capillary length: 78 inches  
Dial: Black  
Oil Pressure Kit: LK-2 required  
[Fitting Instructions](#)



### OIL PRESSURE & WATER TEMP DUAL GAUGES

**Part No. GD1301-91C078**

Type: Mechanical  
Range: 0-100psi/90-230°F  
Scale: Arc  
Dia: 52mm  
Bezel: Chrome & Half "V"  
Bulb: A2  
Capillary length: 78 inches  
Dial: Black  
Oil Pressure Kit: LK-2 required  
[Fitting Instructions](#)



**OIL PRESSURE & WATER TEMP DUAL GAUGES**

**Dual Gauges SMITHS  
MG dual oil and water  
41-712-101-190**



**OIL PRESSURE & WATER TEMP DUAL GAUGES**

**Part No. GD1301-19C078**

Type:Mechanical  
Range:0-100 psi/ 90-230°F  
Scale:Arc  
Dia:52mm  
Bezel: ChromeHalf"V"  
Bulb:A2  
Capillary length: 78 inches  
Dial:Black  
Oil Pressure Kit: LK-2  
required **Fitting Instructions**



**OIL PRESSURE & WATER TEMP DUAL GAUGES**

**Dual Gauges SMITHS  
MG dual oil and water  
41-712-101-269**



**OIL PRESSURE & WATER TEMP DUAL GAUGES**

**Part No. GD1301-82B078**

Type:Mechanical  
Range:30-110°C/0-100psi  
Scale:Arc  
Dia:52mm  
Bezel:BlackHalf"V"  
Bulb: A2  
Capillary length: 78 inches  
Dial: Black  
Oil Pressure Kit: LK-2  
required **Fitting Instructions**



**OIL PRESSURE & WATER TEMP DUAL GAUGES**

**Part No. GD1301-82B096**

Type:Mechanical  
Range:30-110°C/0-100psi  
Scale:Arc  
Dia:52mm  
Bezel:Black Half"V"  
Bulb:K  
Capillary length: 96 inches  
Dial:Black  
Oil Pressure Kit: LK-2 required  
**Fitting Instructions**



**OIL PRESSURE & WATER TEMP DUAL GAUGES**

**Part No. GD1301-82C078**

Type:Mechanical  
Range:30-110°C/0-100psi  
Scale:Arc  
Dia:52mm  
Bezel:ChromeHalf"V"  
Bulb: K  
Capillary length: 78 inches  
Dial: Black  
Oil Pressure Kit: LK-2 required  
**Fitting Instructions**



**OIL PRESSURE & WATER TEMP DUAL GAUGES**

**Dual Gauges SMITHS  
MG dual oil and water  
41-712-101-347**



**OIL PRESSURE & WATER TEMP DUAL GAUGES**

**Part No. GD1301-61C078**

Type:Mechanical  
Range:0-100 psi/ 90-230°F  
Scale:Arc  
Dia:52mm  
Bezel: ChromeHalf"V"  
Bulb: A2  
Capillary length: 78 inches  
Dial: Black  
Oil Pressure Kit: LK-2 required  
**Fitting Instructions**



**OIL PRESSURE & WATER TEMP DUAL GAUGES**

**Part No. GD1301-102C072**

Type:Mechanical  
Range:0-100 psi/30-110°C  
Scale:Arc  
Dia:52mm  
Bezel:ChromeHalf"V"  
Bulb: A2  
Capillary length: 72inches  
Dial: Black  
Oil Pressure Kit:LK-2required  
**Fitting Instructions**



### OIL PRESSURE & WATER TEMP DUAL GAUGES

Part No. **GD1301-82C120**

Type: Mechanical  
Range: 30-110°C/0-100psi  
Scale: Arc  
Dia: 52mm  
Bezel: Chrome & Half "V"  
Bulb: K  
Capillary length: 120 inches  
Dial: Black  
Oil Pressure Kit: LK-2 required  
[Fitting Instructions](#)



### OIL PRESSURE & WATER TEMP DUAL GAUGES

Part No. **GD1301-82C140**

Type: Mechanical  
Range: 30-110°C/0-100psi  
Scale: Arc  
Dia: 52mm  
Bezel: Chrome & Half "V"  
Bulb: K  
Capillary length: 140 inches  
Dial: Black  
Oil Pressure Kit: LK-2 required  
[Fitting Instructions](#)



### OIL PRESSURE & WATER TEMP DUAL GAUGES

Part No. **GD1301-94C078**

Type: Mechanical  
Range: 0-100psi/30-110°C  
Scale: Arc  
Dia: 52mm  
Bezel: Chrome & Half "V"  
Bulb: K  
Capillary length: 78 inches  
Dial: Black  
Oil Pressure Kit: LK-2 required  
[Fitting Instructions](#)



### OIL PRESSURE & WATER TEMP DUAL GAUGES

Part No. **GD1301-87C072**

Type: Mechanical  
Range:  
Scale: Arc  
Dia: 52mm  
Bezel: Chrome & Half Round  
Bulb: A2  
Capillary length: 72 inches  
Dial: Black  
Oil Pressure Kit: LK-2 required  
[Fitting Instructions](#)



### OIL PRESSURE & WATER TEMP DUAL GAUGES

Part No. **GD1301-87C078**

Type: Mechanical  
Range: 0-160 psi/ 30-120°C  
Scale: Arc  
Dia: 52mm  
Bezel: Chrome & Half Round  
Bulb: A2  
Capillary length: 78 inches  
Dial: Black  
Oil Pressure Kit: LK-2 required  
[Fitting Instructions](#)



### OIL PRESSURE & WATER TEMP DUAL GAUGES

Part No. **GD1301-99C072**

Type: Mechanical  
Range: 0-100 psi/ 30-110°C  
Scale: Arc  
Dia: 52mm  
Bezel: Black Full "V"  
Bulb: A2  
Capillary length: 72 inches  
Dial: Black  
Oil Pressure Kit: LK-2 required  
[Fitting Instructions](#)



### OIL PRESSURE & WATER TEMP DUAL GAUGES

Part No. **GD1301-62B072**

Type: Mechanical  
Range: 0-100 psi/ 30-110°C  
Scale: Arc  
Dia: 52mm  
Bezel: Black Half "V"  
Bulb: A2  
Capillary length: 72 inches  
Dial: Black  
Oil Pressure Kit: LK-2 required  
[Fitting Instructions](#)



### OIL PRESSURE & WATER TEMP DUAL GAUGES

Part No. **GD1301-62C078**

Type: Mechanical  
Range: 30-110°C/ 0-100psi  
Scale: Arc  
Dia: 52mm  
Bezel: Black Half "V"  
Bulb: A2  
Capillary length: 78 inches  
Dial: Black  
Oil Pressure Kit: LK-2 required  
[Fitting Instructions](#)



### OIL PRESSURE & WATER TEMP DUAL GAUGES

Part No. **GD1301-92B072**

Type: Mechanical  
Range: 0-100psi/30-110°C  
Scale: Arc  
Dia: 52mm  
Bezel: Black Half "V"  
Bulb: A2  
Capillary length: 72 inches  
Dial: Black  
Oil Pressure Kit: LK-2 required  
[Fitting Instructions](#)



### OIL PRESSURE & WATER TEMP DUAL GAUGES

Part No. **GD1301-62C072**

Type: Mechanical  
Range: 30-110°C/ 0-100psi  
Scale: Arc  
Dia: 52mm  
Bezel: Black Half "V"  
Bulb: A2  
Capillary length: 72 inches  
Dial: Black  
Oil Pressure Kit: LK-2 required  
[Fitting Instructions](#)



**JAEGER or SMITHS DUAL GAUGES**

**MGA MIDGET & HEALEY SPRITE**

**COMPLETE WITH ORIGINAL FLOODLIGHTING SLOTS**



**OIL PRESSURE & WATER TEMP DUAL GAUGES**

**Dual Gauges JAEGER  
MG dual oil and water  
41-712-101-341**



**OIL PRESSURE & WATER TEMP DUAL GAUGES**

**Part No. GD1501-01C078**

Type: Mechanical  
Range: 0-100 psi/90-230°F  
Scale: Arc  
Dia: 52mm  
Bezel: Chrome Half "V"  
Bulb: A2  
Capillary length: 78 inches  
Dial: Black  
Oil Pressure Kit: LK-2 required  
[Fitting Instructions](#)



**OIL PRESSURE & WATER TEMP DUAL GAUGES**

**Dual Gauges JAEGER  
MG dual oil and water  
41-712-101-177**



**OIL PRESSURE & WATER TEMP DUAL GAUGES**

**Part No. GD1501-04C078**

Type: Mechanical  
Range: 0-100psi/90-230°F  
Scale: Arc  
Dia: 52mm  
Bezel: Chrome Half "V"  
Bulb: A2  
Capillary length: 78 inches  
Dial: Black  
Oil Pressure Kit: LK-2  
required [Fitting Instructions](#)



**OIL PRESSURE & WATER TEMP DUAL GAUGES**

**Dual Gauges SMITHS  
MG dual oil and water**



**OIL PRESSURE & WATER TEMP MG**

**Part No. GD1502-06C072**

Type: Mechanical  
Range: 0-100 psi /90-230°F  
Scale: Arc  
Dia: 52 mm  
Bezel: Chrome Half "V"  
[Fitting Instructions](#)



**OIL PRESSURE & WATER TEMP DUAL GAUGES**

**Part No. GD1501-14C078**

Type: Mechanical  
Range: 0-100 psi/ 90-230°F  
Scale: Arc  
Dia: 52 mm  
Bezel: Chrome Half "V"  
Bulb: A2  
Capillary length: 78 inches  
Dial: Black  
Oil Pressure Kit: LK-2  
required [Fitting Instructions](#)



**OIL PRESSURE & WATER TEMP DUAL GAUGES**

**Part No. GD1501-15C078**

Type: Mechanical  
Range: 0-100 psi/30-110c  
Scale: Arc  
Dia: 52 mm  
Bezel: Chrome Half "V"  
Bulb: A2  
Capillary length: 78 inches  
Dial: Black  
Oil Pressure Kit: LK-2 required  
[Fitting Instructions](#)



## SMITHS MGB DUAL GAUGES



### OIL PRESSURE & WATER TEMP DUAL GAUGES

Dual Gauges SMITHS  
MGB dual oil and  
water  
41-712-101-195



### OIL PRESSURE & WATER TEMP DUAL GAUGES

Part No. **GD1301-21B072**

Type: Mechanical  
Range: 0-100 psi/C-N-H  
Scale: Arc  
Dia: 52mm  
Bezel: Black Half "V"  
Bulb: A2  
Capillary length: 72 inches  
Dial: Black  
Oil Pressure Kit: LK-2 required  
[Fitting Instructions](#)



### OIL PRESSURE & WATER TEMP DUAL GAUGES

Part No. **GD1301-90B072**

Type: Mechanical  
Range: 0-100 psi/C-N-H  
Scale: Arc  
Dia: 52mm  
Bezel: Chrome Half "V"  
Bulb: A2  
Capillary length: 72 inches  
Dial: Black  
Oil Pressure Kit: LK-2 required  
[Fitting Instructions](#)



### OIL PRESSURE & WATER TEMP DUAL GAUGES

Part No. **GD1301-21C072**

Type: Mechanical  
Range: 0-100 psi/C-N-H  
Scale: Arc  
Dia: 52mm  
Bezel: Chrome Half "V"  
Bulb: A2  
Capillary length: 72 inches  
Dial: Black  
Oil Pressure Kit: LK-2 required  
[Fitting Instructions](#)



### OIL PRESSURE & WATER TEMP DUAL GAUGES

Part No. **GD1301-21C091**

Type: Mechanical  
Range: 0-100 psi/C-N-H  
Scale: Arc  
Dia: 52mm  
Bezel: Chrome Half "V"  
Bulb: A2  
Capillary length: 91 inches  
Dial: Black  
Oil Pressure Kit: LK-2  
required [Fitting Instructions](#)



### OIL PRESSURE & WATER TEMP DUAL GAUGES

Part No. **GD1301-90C072**

Type: Mechanical  
Range: 0-100 psi/C-N-H  
Scale: Arc  
Dia: 52mm  
Bezel: Chrome Half "V"  
Bulb: A2  
Capillary length: 72 inches  
Dial: Black  
Oil Pressure Kit: LK-2  
required [Fitting Instructions](#)



## SMITHS MGB GT V8 DUAL GAUGES



### OIL PRESSURE & WATER TEMP DUAL GAUGES

Dual Gauges SMITHS  
MGB GT V8  
dual Oil and Water  
41-712-101-236



### OIL PRESSURE & WATER TEMP DUAL GAUGES

Part No. **GD1301-45C078**

Type: Mechanical  
Range: 0-60 psi/ C-N-H  
Scale: Arc  
Dia: 52mm  
Bezel: Chrome Half "V"  
Bulb: A2  
Capillary length: 78 inches  
Dial: Black  
Oil Pressure Kit: LK-2 required

**Fitting Instructions**



### OIL PRESSURE & WATER TEMP DUAL GAUGES

Part No. **GD1301-53C078**

Type: Mechanical  
Range: 0-60 psi/ C-N-H  
Scale: Arc  
Dia: 52 mm  
Bezel: Chrome Half "V"  
Bulb: A2  
Capillary length: 78 inches  
Dial: Black  
Oil Pressure Kit: LK-2 required

**Fitting Instructions**



### OIL PRESSURE & WATER TEMP DUAL GAUGES

Part No. **GD1302-45C078**

Type: Mechanical  
Range: 0-60psi/C-N-H  
Scale: Arc  
Dia: 52mm  
Bezel: Chrome Half "V"  
Bulb: A2  
Capillary length: 78 inches  
Dial: Magnolia  
Oil Pressure Kit: LK-2 required

**Fitting Instructions**



## MAGNOLIA DUAL GAUGES MG & AUSTIN HEALEY



### OIL PRESSURE & WATER TEMP DUAL GAUGES

**Dual Gauges SMITHS  
MG dual oil and water  
41-712-101-318**



### OIL PRESSURE & WATER TEMP DUAL GAUGES

**Part No. GD1301-75C072**

Type: Mechanical  
Range: 0-100psi/30-110°C  
Scale: Arc  
Dia: 52mm  
Bezel: Chrome Half "V"  
Capillary length: 72 inches  
Dial: Magnolia  
Oil Pressure Kit: LK-2 required  
[Fitting Instructions](#)



### OIL PRESSURE & WATER TEMP DUAL GAUGES

**Dual Gauges SMITHS  
MG dual oil and water  
41-712-101-330**



### OIL PRESSURE & WATER TEMP DUAL GAUGES

**Part No. GD1301-96C078**

Type: Mechanical  
Range: 0-100 psi/30-110°C  
Scale: Arc  
Dia: 52mm  
Bezel: Chrome Full "V"  
Bulb: K  
Capillary length: 78 inches  
Dial: Black  
Oil Pressure Kit: LK-2 required  
[Fitting Instructions](#)



### OIL PRESSURE & WATER TEMP DUAL GAUGES

**Part No. GD1301-85C078**

Type: Mechanical  
Range: 0-100psi/30-110°C  
Scale: Arc  
Dia: 52mm  
Bezel: Chrome Half "V"  
Bulb: K  
Capillary length: 78 inches  
Dial: Magnolia  
Oil Pressure Kit: LK-2 required  
[Fitting Instructions](#)



### OIL PRESSURE & WATER TEMP DUAL GAUGES

**Part No. GD1301-92C072**

Type: Mechanical  
Range: 0-100psi/30-110°C  
Scale: Arc  
Dia: 52mm  
Bezel: Black Half Round  
Bulb: A2  
Capillary length: 72 inches  
Dial: Magnolia  
Oil Pressure Kit: LK-2 required  
[Fitting Instructions](#)



### OIL PRESSURE & WATER TEMP DUAL GAUGES

**Part No. GD1301-14C078**

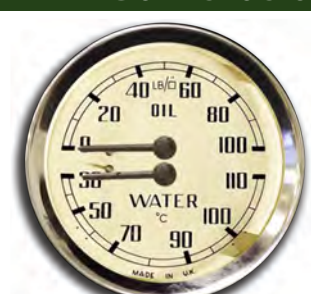
Type: Mechanical  
Range: 0-100 psi/ 30-110 C  
Scale: Arc  
Dia: 52 mm  
Bezel: Chrome Full "V"  
Bulb: A2  
Capillary length: 78 inches  
Dial: Magnolia  
Oil Pressure Kit: LK-2 required  
[Fitting Instructions](#)



### OIL PRESSURE & WATER TEMP DUAL GAUGES

**Part No. GD1301-81C078**

Type: Mechanical  
Range: 100psi/30-110°C  
Scale: Arc  
Dia: 52mm  
Bezel: Chrome Half "V"  
Bulb: A2  
Capillary length: 78 inches  
Dial: Magnolia  
Oil Pressure Kit: LK-2 required  
[Fitting Instructions](#)





## MAGNOLIA DUAL GAUGES MGB GT & AUSTIN HEALEY



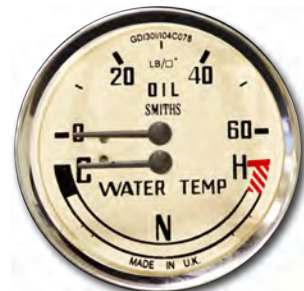
### OIL PRESSURE & WATER TEMP DUAL GAUGES

**Dual Gauges SMITHS**  
**MGB GT V8**  
**dual oil and water**  
**41-712-101-354**



### OIL PRESSURE & WATER TEMP DUAL GAUGES

**Part No. GD1301-104C078**  
 Type: Mechanical  
 Range: 0-60psi, 30-120°C Scale:  
 Arc  
 Dia: 52mm  
 Bezel: Chrome Full "V"  
 Bulb: K  
 Capillary length: 78 inches  
 Dial: Magnolia  
 Oil Pressure Kit: LK-2 required  
[Fitting Instructions](#)



### OIL PRESSURE & WATER TEMP DUAL GAUGES

**Dual Gauges SMITHS**  
**AUSTIN HEALEY dual**  
**oil and water**  
**41-712-101-355**



### OIL PRESSURE & WATER TEMP DUAL GAUGES

**Part No. GD1301-105C078**  
 Type: Mechanical  
 Range: 0-60 psi/30-120°  
 Scale: Arc  
 Dia: 52mm  
 Bezel: Chrome Full "V"  
 Bulb: K  
 Capillary length: 78 inches  
 Dial: Magnolia  
 Oil Pressure Kit: LK-2 required  
[Fitting Instructions](#)



## DUAL GAUGES LANDROVER



### OIL PRESSURE & WATER TEMP DUAL GAUGES

Dual Gauges SMITHS  
Landrover dual oil  
and water  
41-712-101-338



### OIL PRESSURE & WATER TEMP DUAL GAUGES

Part No. **GD1310-16B080**

Type: Mechanical  
Range: 0-100psi/0-120°C  
Scale: Arc  
Dia: 52mm  
Bezel: Black Full "V"  
Bulb: K  
Capillary length: 80 inches  
Dial: Black  
Oil Pressure Kit: LK-2 required  
[Fitting Instructions](#)



### OIL PRESSURE & WATER TEMP DUAL GAUGES

Dual Gauges SMITHS  
Landrover dual oil  
and water  
41-712-101-344



### OIL PRESSURE & WATER TEMP DUAL GAUGES

Part No. **GD1310-20B080**

Type: Mechanical  
Range: 0-100psi/30-100°C  
Scale: Arc  
Dia: 52mm  
Bezel: Black Full "V"  
Bulb: K  
Capillary length: 80 inches  
Dial: Black  
Oil Pressure Kit: LK-2 required  
[Fitting Instructions](#)



## DUAL GAUGES LOTUS



### OIL PRESSURE & WATER TEMP LOTUS

Part No. **GD1301-23C078**

Type: Electric  
Range: 0-60 psi/ 30-110°C  
Scale: Arc  
Dia: 52mm  
Bezel: Chrome Half "V"  
Capillary Length: 78 inches  
[Fitting Instructions](#)



### OIL PRESSURE & WATER TEMP LOTUS

Part No. **GD1310-19B048**

Type: Mechanical  
Range: 0-60 psi/ 90-230°F  
Scale: Arc  
Dia: 52mm  
Bezel: Black Half "V"  
Bulb: K  
Capillary length: 48 inches  
Dial: Black  
Oil Pressure Kit: LK-2 required  
[Fitting Instructions](#)

