

FLIGHT RANGE



CLOCK

FLIGHT

Part No. **FAC1-1052-00C**

Type: Electrical
Range: 12 hours
Scale: Full

Dia: 52 mm
Bezel: Chrome Half Round
[Fitting Instructions](#)



AMBIENT TEMP

FLIGHT

Part No. **FAT1-1B52-00C**

Type: Electric
Range: -20-50 °C

Scale: Full
Dia: 52mm
Bezel: Chrome Half Round
[Fitting Instructions](#)

Part No. **FAT1-1B52-00C**

Type: Electric
Range: 0-1/4-1/2-3/4-4/4

Scale: Full
Dia: 52mm
Bezel: Chrome Half Round
[Fitting Instructions](#)



WATER TEMP

FLIGHT

Part No. **FCT1-1B52-00C**

Type: Electric
Range: 40-120 °C
Scale: Full
Dia: 52mm
Bezel: Chrome Half Round
[Fitting Instructions](#)



FUEL LEVEL

FLIGHT

Part No. **FFC1-1B52-00C**

Type: Electric
Range: 0-1/4-1/2-3/4-4/4

Scale: Full
Dia: 52mm
Bezel: Chrome Half Round
[Fitting Instructions](#)

FLIGHT BOOST

FLIGHT

Part No. **FMP1-1B52-00C**

Type: Electrical
Range: -1 - 2 bar

Scale: Full
Dia: 52mm
Bezel: Chrome Half Round
[Fitting Instructions](#)



OIL PRESSURE

FLIGHT

Part No. **FOP1-1B52-00C**

Type: Electric
Range: 0-7bar

Scale: Full
Dia: 52mm
Bezel: Chrome Half Round
[Fitting Instructions](#)



OIL PRESSURE

FLIGHT

Part No. **FOP1-1B52-02C**

Type: Electric
Range: 0-100 psi

Scale: Full
Dia: 52mm
Bezel: Chrome Half Round
Representative Image
[Fitting Instructions](#)



OIL PRESSURE

FLIGHT

Part No. **FOP1-1B52-17C**

Type: Electrical
Range: 0-7 bar

Scale: Full
Dia: 52mm
Bezel: Chrome Half Round
[Fitting Instructions](#)




OIL TEMP **FLIGHT**

Part No. FOT1-1B52-00C

Type: Electric
Range: 50-100 °C

Scale: Full
Dia: 52mm
Bezel: Chrome Half Round
[Fitting Instructions](#)




VOLTMETER **FLIGHT**

Part No. FVO1-1B52-00C

Type: Electric
Range: 9-17 volts

Scale: Full
Dia: 52mm
Bezel: Chrome Half Round
[Fitting Instructions](#)




SPEEDOMETER **FLIGHT**

Part No. FES3-1B52-00C

Type: Electrical
Range: 0-180 mph

Scale: Full
Dia: 80mm
Bezel: Chrome Half Round
[Fitting Instructions](#)




SPEEDOMETER **FLIGHT**

Part No. FES3-1B52-01C

Type: Electric
Range: 0-140 mph

Scale: Full
Dia: 80mm
Bezel: Chrome Half Round
Representative Image
[Fitting Instructions](#)




SPEEDOMETER **FLIGHT**

Part No. FES3-1B52-02C

Type: Electric
Range: 0-280 kph

Scale: Full
Dia: 80mm
Bezel: Chrome Half Round
[Fitting Instructions](#)




SPEEDOMETER **FLIGHT**

Part No. FES5-1B52-00C

Type: Electric
Range: 0-180 mph

Scale: Full
Dia: 100mm
Bezel: Chrome Half Round
[Fitting Instructions](#)




TACHOMETER **FLIGHT**

Part No. FET5-1B52-00C

Type: Electric
Range: 0-8000 RPM

Scale: Full
Dia: 100mm
Bezel: Chrome Half Round
[Fitting Instructions](#)




SPEEDOMETER **FLIGHT**

Part No. FES5-1B52-02C

Type: Electric
Range: 0-280 kph

Scale: Full
Dia: 100mm
Bezel: Chrome Half Round
[Fitting Instructions](#)



TACHOMETER **FLIGHT**

Part No. FET1-1B52-00C

Type: Electric
Range: 0-8000 RPM

Scale: Full
Dia: 52mm
Bezel: Chrome Half Round
[Fitting Instructions](#)



TACHOMETER **FLIGHT**

Part No. FET3-1B52-00C

Type: Electrical
Range: 0-8000 RPM

Scale: Full
Dia: 80mm
Bezel: Chrome Half Round
[Fitting Instructions](#)



INTERNATIONAL RANGE



CLOCK

INTERNATIONAL

Part No. **IAC1-1052-00B**

Type: Electrical
Range: 12 hours
Scale: Full
Dia: 52 mm
Bezel: Black Full "V"

Fitting Instructions



CLOCK

INTERNATIONAL

Part No. **IAC1-1052-01B**

Type: Electric
Range: 12 hours
Scale: Full
Dia: 52 mm
Bezel: Black Full "V"

Fitting Instructions



AMMETER

INTERNATIONAL

Part No. **IAM1-0052-03B**

Type: Electric
Range: 30-0-30
Scale: Arc
Dia: 52mm
Bezel: Black Full "V"

Fitting Instructions



Representative Image

AMMETER

INTERNATIONAL

Part No. **IAM1-0052-06B**

Type: Electric
Range: 60-0-60
Scale: Arc
Dia: 52mm
Bezel: Black Full "V"

Fitting Instructions



OIL PRESSURE

INTERNATIONAL

Part No. **IOP1-1552-07B**

Type: Electric
Range: 0-7bar
Scale: Arc
Dia: 52mm
Bezel: Black Full "V"

Fitting Instructions



Representative Image

OIL PRESSURE

INTERNATIONAL

Part No. **IOP1-1552-10B**

Type: Electric
Range: 0-10Bar
Scale: Arc
Dia: 52mm
Bezel: Black Full "V"

Fitting Instructions



FUEL LEVEL

INTERNATIONAL

Part No. **IFC1-1552-00B**

Type: Electric
Range: 0-1/2-1
Scale: Arc
Dia: 52mm
Bezel: Black Full "V"

Fitting Instructions



WATER TEMP

INTERNATIONAL

Part No. **ICT1-1452-12B**

Type: Electrical
Range: 40-140°C
Scale: Arc
Dia: 52mm
Bezel: Black Full "V"

Fitting Instructions



OIL TEMP**INTERNATIONAL****Part No. IOT1-1452-15B**

Type: Electrical
 Range: 50-150 °C
 Scale: Arc
 Dia: 52 mm
 Bezel: Black Full "V"

Fitting Instructions**TRANSMISSION OIL TEMP****INTERNATIONAL****Part No. ITT1-1452-15B**

Type: Electric
 Range: 50-150 °C
 Scale: Arc
 Dia: 52 mm
 Bezel: Black Full "V"

Fitting Instructions**VOLTMETER****INTERNATIONAL****Part No. IVO1-1052-02B**

Type: Electrical
 Range: 9-17 volts
 Scale: Arc
 Dia: 52 mm
 Bezel: Black Full "V"

Fitting Instructions**VOLTMETER****INTERNATIONAL****Part No. IVO1-1052-03B**

Type: Electric
 Range: 9-17 volts
 Scale: Arc
 Dia: 52 mm
 Bezel: Black Full "V"

Fitting Instructions**SPEEDOMETER****INTERNATIONAL****Part No. IES3-1B32-00B**

Type: Electric
 Range: 0-140 mph
 Scale: Full
 Dia: 80mm
 Bezel: Black Full "V"

Fitting Instructions**SPEEDOMETER****INTERNATIONAL****Part No. IES3-1B32-01B**

Type: Electric
 Range: 0-180 mph
 Scale: Full
 Dia: 80mm
 Bezel: Black Full "V"

Fitting Instructions**SPEEDOMETER****INTERNATIONAL****Part No. IES3-1B32-02B**

Type: Electric
 Range: 0-240 kph
 Scale: Full
 Dia: 80mm
 Bezel: Black Full "V"

Fitting Instructions

Representative Image

**SPEEDOMETER****INTERNATIONAL****Part No. IES3-1B32-03B**

Type: Electric
 Range: 0-280 kph
 Scale: Full
 Dia: 80mm
 Bezel: Black Full "V"

Fitting Instructions

Representative Image

**SPEEDOMETER****INTERNATIONAL****Part No. IES5-1B32-00B**

Type: Electric
 Range: 0-140 mph
 Scale: Full
 Dia: 100mm
 Bezel: Black Full "V"

Fitting Instructions

Representative Image

**SPEEDOMETER****INTERNATIONAL****Part No. IES5-1B32-01B**

Type: Electrical
 Range: 0-180 mph
 Scale: Full
 Dia: 100mm
 Bezel: Black Full "V"

Fitting Instructions

SPEEDOMETER INTERNATIONAL

Part No. **IES5-1B32-02B**

Type: Electrical
Range: 0-240kph
Scale: Full
Dia: 100mm
Bezel: Black Full "V"
Fitting Instructions

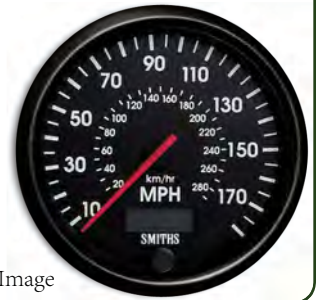


Representative Image

SPEEDOMETER

Part No. **IES5-1B32-03B**

Type: Electric
Range: 0-280kph
Scale: Full
Dia: 100 mm
Bezel: Black Full "V"
Fitting Instructions



Representative Image

TACHOMETER INTERNATIONAL

Part No. **IET3-5B32-00B**

Type: Electric
Range: 0-8000 RPM
Scale: Full
Dia: 80mm
Bezel: Black Full "V"
Fitting Instructions



TACHOMETER INTERNATIONAL

Part No. **IET3-5B32-03B**

Type: Electric
Range: 0-14000 RPM
Scale: Arc
Dia: 52 mm
Bezel: Black Full "V"
Fitting Instructions



TACHOMETER INTERNATIONAL

Part No. **IET5-5B32-00B**

Type: Electric
Range: 0-8000 RPM
Scale: Full
Dia: 100mm Bezel:
Black Full "V"
Fitting Instructions



Telemetrix

Smiths Telemetrix range is designed for a modern sporting look with attractive brushed aluminium bezels, cirrus white dials and red pointers creating great clarity for the performance and race car driver.

The Telemetrix range was original equipment on the TVR range of sports cars in the UK.



AMMETER

TELEMETRIX

Part No. **TAM1-0052-06**

Type: Electrical
Range: 60-0-60 Amps
Scale: Arc
Fitting: Spade
Dia: 52mm
Bezel: Silver 1/2 Round

Fitting Instructions



AMMETER

TELEMETRIX

Part No. **TAM1-0052-03**

Type: Electric
Range: 30-0-30
Scale: Full
Dia: 52mm
Bezel: Silver 1/2 Round

Fitting Instructions



Representative Image

CLOCK

TELEMETRIX

Part No. **TAC1-1052-00**

Type: Electrical
Range: 12hour
Scale: Full
Fitting: Spade
Dia: 52mm
Bezel: Silver 1/2 Round

Fitting Instructions



CLOCK

TELEMETRIX

Part No. **TAC1-1052-01**

Type: Electric
Range: 12hours
Scale: Full
Dia: 52mm
Bezel: Silver 1/2 Round

Fitting Instructions



FUEL TANK LEVEL

TELEMETRIX

Part No. **TFC1-1552-00**

Type: Electric
Range: 0 - 1/2 - 1
Scale: Full
Fitting: Spade
Dia: 52mm
Bezel: Silver
Use sender Part No. TB9006Kit or TB9013Kit

Fitting Instructions



OIL PRESSURE

TELEMETRIX

Part No. **TOP1-3832-10**

Type: Mechanical
Range: 0 - 10 Bar
Scale: Full
Fitting: 1/8in NPT
Dia: 52mm
Bezel: Silver 1/2 Round Use Fitting Kit Part No. LK-2

Fitting Instructions



OIL PRESS./WATER TEMPERATURE

TELEMETRIX

Part No. **TGD1301-64078**

Type: Mechanical
Range: 0 - 100 PSI / 90 - 230° F
Scale: Full Dia: 52mm
Fitting: 1/8in NPT / 3/8BSP
Bezel: Silver 1/2 Round
Capillary length 78in.
Comes with 3/8BSP to 5/8UNF adaptor. Use LK-1 on Pressure

Fitting Instructions



OIL PRESSURE

TELEMETRIX

Part No. **TOP1-1552-10**

Type: Electric
Range: 0 - 10 Bar
Scale: Arc
Fitting: Spade
Dia: 52mm
Bezel: Silver 1/2 Round
Use Sender Part No. PTR3000-8N-

Fitting Instructions



OIL PRESSURE**TELEMETRIX****Part No. TOP1-1552-07**

Type: Electric
 Range: 0 - 7 Bar Scale: Arc
 Fitting: Spade
 Dia: 52mm
 Bezel: Silver 1/2 Round Use
 Sender Part No.
 PTR3000-8N-10

**Fitting Instructions****OIL PRESSURE****TELEMETRIX****Part No. TOP1-3832-07**

Type: Mechanical
 Range: 0 - 7 Bar
 Scale: Full
 Fitting: 1/8in NPT
 Dia: 52mm
 Bezel: Silver 1/2 Round
 Use Fitting Kit Part No. LK-2

**Fitting Instructions:****FUEL PRESSURE****TELEMETRIX****Part No. TFP1-3832-07**

Type: Mechanical
 Range: 0 - 7 Bar
 Scale: Full
 Fitting: 1/8in NPT
 Dia: 52mm
 Bezel: Silver 1/2 Round
 Use Fitting Kit Part No. LK-2

**Fitting Instructions:****FUEL PRESSURE****TELEMETRIX****Part No. TFP1-3832-02**

Type: Mechanical
 Range: 0 - 2 Bar
 Scale: Full
 Fitting: 1/8in NPT
 Dia: 52mm
 Bezel: Silver 1/2 Round
 Use Fitting Kit Part No. LK-2

**Fitting Instructions:****WATER TEMP****TELEMETRIX****Part No. TCT1-1452-12**

Type: Electrical
 Range: 40 - 120°C
 Scale: Arc
 Fitting: Spade
 Dia: 52mm
 Bezel: Silver 1/2 Round
 Use Sender Part No. TT3001-8N

**Fitting Instructions****WATER TEMP****TELEMETRIX****Part No. TCT1-3832-002**

Type: Mechanical
 Range: 40 - 150° C Scale: Full
 Fitting: 3/8BSP Dia: 52mm
 Bezel: Silver 1/2 Round
 Capillary length 78in.
 Comes with 3/8BSP to 5/8UNF adaptor.

**Fitting Instructions:****TRANSMISSION OIL TEMPERATURE****TELEMETRIX****Part No. TTT1-1452-15**

Type: Electric
 Range: 50 - 150°C
 Scale: Arc
 Fitting: Spade
 Dia: 52mm
 Bezel: Silver 1/2 Round
 Use Sender Part No. TT3005-8N

**Fitting Instructions****OIL TEMPERATURE****TELEMETRIX****Part No. TOT1-1452-15**

Type: Electric
 Range: 50 - 150° C
 Scale: Arc
 Fitting: Spade
 Dia: 52mm
 Bezel: Silver 1/2 Round
 Use Sender Part No. TT3005-8N

**Fitting Instructions****OIL TEMPERATURE****TELEMETRIX****Part No. TOT1-3832-002**

Type: Mechanical
 Range: 40 - 150° C Scale: Full
 Fitting: 3/8BSP Dia: 52mm
 Bezel: Silver 1/2 Round
 Capillary length 78inches.
 Comes with 3/8BSP to 5/8UNF adaptor.

**Fitting Instructions:****TURBO BOOST****TELEMETRIX****Part No. TMP1-3832-21**

Type: Mechanical
 Range: -1 to +1.5 Bar
 Scale: Full
 Fitting: 1/8in NPT
 Dia: 52mm
 Bezel: Silver 1/2 Round

**Fitting Instructions:**

VOLTMETER**TELEMETRIX****Part No. TV01-1052-03**

Type: Electric
 Range: 9-17 Volts
 Scale: Arc
 Dia: 52mm
 Bezel: Silver 1/2 Round

Fitting Instructions**VOLTMETER****TELEMETRIX****Part No. TV01-1052-02**

Type: Electric
 Range: 9 - 17 Volts
 Scale: Arc
 Fitting: Spade
 Dia: 52mm
 Bezel: Silver 1/2 Round

Fitting Instructions**SPEEDOMETER****TELEMETRIX****Part No. TES5-1B32-02**

Type: Electrical
 Range: 0 - 240 kph
 Scale: Full
 Fitting: Harness
 Dia: 100mm
 Bezel: Silver 1/2 Round

Fitting Instructions**SPEEDOMETER****TELEMETRIX****Part No. TES3-1B32-00**

Type: Electrical
 Range: 0 - 140mph
 Scale: Full
 Dia: 80mm
 Bezel: Silver 1/2 Round

Fitting Instructions

Representative Image

SPEEDOMETER**TELEMETRIX****Part No. TES5-1B32-03**

Type: Electrical
 Range: 0 - 280 kph
 Scale: Full
 Fitting: Harness
 Dia: 100mm
 Bezel: Silver 1/2 Round

Fitting Instructions**SPEEDOMETER****TELEMETRIX****Part No. TES3-1B32-02**

Type: Electrical
 Range: 0 - 240 kph
 Scale: Full
 Fitting: Harness
 Dia: 80mm
 Bezel: Silver 1/2 Round

Fitting Instructions**SPEEDOMETER****TELEMETRIX****Part No. TES3-1B32-01**

Type: Electric
 Range: 0 - 180 mph
 Scale: Full
 Dia: 80mm
 Bezel: Silver 1/2
 Round

Fitting Instructions**SPEEDOMETER****TELEMETRIX****Part No. TES3-1B32-03**

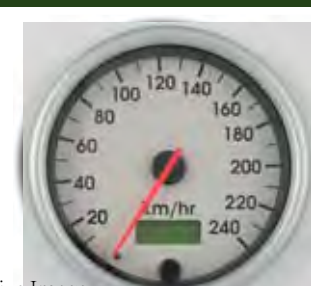
Type: Electrical
 Range: 0 - 280 kph
 Scale: Full
 Fitting: Harness
 Dia: 80mm
 Bezel: Silver 1/2 Round

Fitting Instructions**SPEEDOMETER****TELEMETRIX****Part No. TES5-1B32-01**


Type: Electrical
 Range: 0 - 180 mph
 Scale: Full
 Dia: 100mm
 Bezel: Silver 1/2 Round


Fitting Instructions**SPEEDOMETER****TELEMETRIX****Part No. TES5-1B32-00**

Type: Electric
 Range: 0 - 140mph
 Scale: Full
 Dia: 100mm
 Bezel: Silver 1/2 Round

Fitting Instructions

Representative Image

TACHOMETER	TELEMETRIX
Part No. TET3-5B32-00 Type: Electrical Range: 0 - 8000 RPM Scale: Full Fitting: Harness Dia: 80mm Bezel: Silver 1/2 Round 2, 3 or 4 pulses / rev Fitting Instructions	
	

TACHOMETER	TELEMETRIX
Part No. TET3-5B32-03 Type: Electrical Range: 0 - 14000 RPM Scale: Full Dia: 80mm Bezel: Silver HalfRound Fitting Instructions	
	
Representative Image	

TACHOMETER	TELEMETRIX
Part No. TET5-5B32-00 Type: Electric Range: 0 - 8000 RPM Scale: Full Fitting: Harness Dia: 100mm Bezel: Silver 1/2 Round 2, 3 or 4 Pulse / rev Fitting Instructions	
