



metalliks®

Metal panel solutions for architectural envelopes

Table of contents

Product overview



	page
Point profiles	4
Isis 33.80.880	4
Isis 55.120.840	4
Isis 79.170.850	4
Block profiles	8
Block 30 - WP30.60.10	8
Block 40 - WP40.80.7	8
Block 50 - WP50.100.6	8
Special facade systems	10
Flat lock	10
Standing seam	12
Over strip	14
Sierra	16
Cassette systems	18
Cassette MD	18
Cassette BS	20
Cassette SP	21
Plank profiles (sidings)	22
PWZ-35/300 (visible)	22
Hairplan 300 (secret)	23
PWO-35/300 (secret)	24
ST-500NL (secret)	25
Profile cladding A-symmetrical	26
Eclectic	26

▼ = standard coating side

METALLIKS® – by Materia Facade Engineering

At MFE, we offer an exceptionally broad portfolio of metal systems for roofing, façades, and architectural envelopes.

In addition to our standard solutions presented in this catalog, we provide the option to develop customized panels to meet specific technical or aesthetic requirements. At **METALLIKS®**, we manufacture a wide range of panel types including flat panels, standing seam systems, flat lock panels, metal cassettes, as well as perforated, corrugated, and curved systems, all they adaptable to complex architectural projects.

Our philosophy of continuous improvement and technological development ensures that we are and remain a reliable strategic partner at every stage of the project.

Wide Range of Materials

Our use of diverse metals allows us to deliver solutions that meet the highest standards in design, durability, and low maintenance. We offer stainless steel, weathered steel, corten steel (CorTen and Indaten®), aluminum, pre-coated steel, zinc, copper, and titanium, each with distinct technical and aesthetic properties suited to specific applications in contemporary, industrial, and commercial architecture.

Extensive Color and Coating Options

MFE offers one of the most comprehensive selections of coatings, colors, and finishes on the market. From polyester, polyurethane, and PVDF coatings, to metallic, matte, satin, or iridescent finishes—our wide range meets even the most demanding design specifications. Our color chart provides a detailed overview of all available options. We also have the capacity to create custom coatings and tones, whether based on a specific RAL color or by replicating a pre-existing metallic finish.

Unique design

At **METALLIKS®**, we work closely with you to design a system that integrates seamlessly with your architectural concept and the project's technical requirements. All systems are precisely manufactured according to specific project parameters, ensuring exclusive, functional, and visually cohesive solutions.

In Summary

Various metal types, specialized coatings, an extensive color palette, and a design approach tailored to each project—our **METALLIKS®** division transforms these variables into innovative, durable façades with high aesthetic value.

This brochure presents a representative sample of our **METALLIKS®** line and showcases the potential of the solutions we offer for high-end architectural projects.



Profile cladding

Point profiles



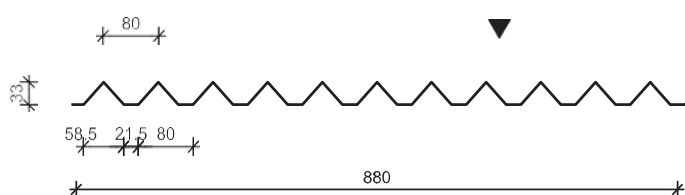
Isis 33/80-11B/HB



Technical characteristics

Nominal steel thickness (mm)	0.63 - 0.75
Weight (kg/m ²)	6.86 - 8.17
Working width (mm)	880
Bandwidth (mm)	1220
Max. length (mm)	6000
Min. length (mm)	750
Profiling	Point profiles
Mounting	Visible
Colours and coatings	Arval Colorissime

Be sure to ask about our custom-made point-profile options.



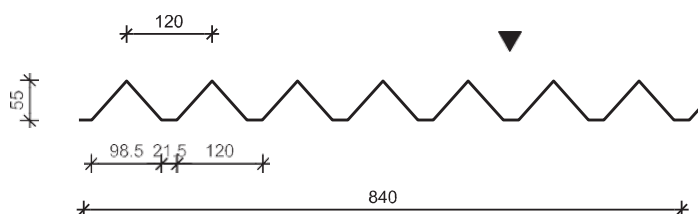
Isis 55/120-7B/HB



Technical characteristics

Nominal steel thickness (mm)	0.63 - 0.75
Weight (kg/m ²)	7.19 - 8.56
Working width (mm)	840
Bandwidth (mm)	1220
Max. length (mm)	6000
Min. length (mm)	750
Profiling	Point profiles
Mounting	Visible
Colours and coatings	Arval Colorissime

Be sure to ask about our custom-made point-profile options.



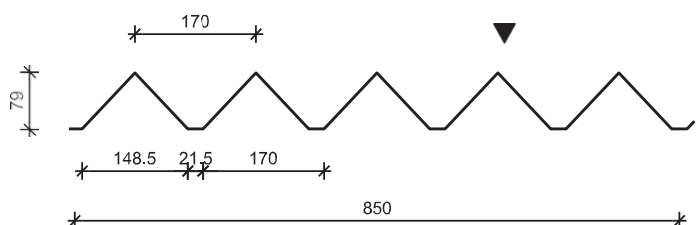
Isis 79/170-5B/HB



Technical characteristics

Nominal steel thickness (mm)	0.63 - 0.75
Weight (kg/m ²)	7.11 - 8.46
Working width (mm)	850
Bandwidth (mm)	1220
Max. length (mm)	6000
Min. length (mm)	750
Profiling	Point profiles
Mounting	Visible
Colours and coatings	Arval Colorissime

Be sure to ask about our custom-made point-profile options.



Profile cladding

Point profiles



Fitness Centre Zevenaar
Architect: 4D architecten



YUST Antwerp
Architect: Polo architecten



Kinepolis Utrecht - ISIS profiles
Architect: Snelder Architecten

Profile cladding

Point profiles



Seat Skoda Hasselt
Architect: Mamu



Seat Skoda Hasselt
Architect: Academy Diepenbeek



Isis 79 Perfo R06T09
Stainless steel 2B

Profile cladding

Point profiles



Deca Packaging - ISIS profiles Herentals
Architect: 2DVW architecten bvba



Deca Packaging - ISIS profiles Herentals
Architect: 2DVW architecten bvba



ISIS Custom-made - Renovation Tiel
Hairexcel 6906 (9006)



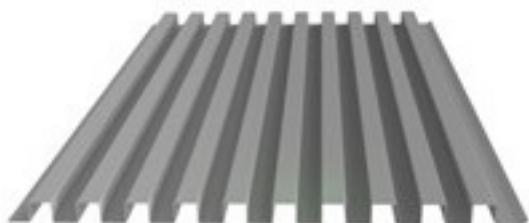
Royal Dutch Mint - Houten
Architect: Wil-Ma

Profile cladding

Block profile



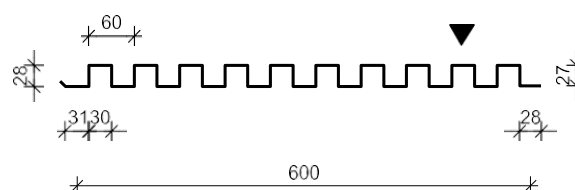
Block 30 type WP30.60.10



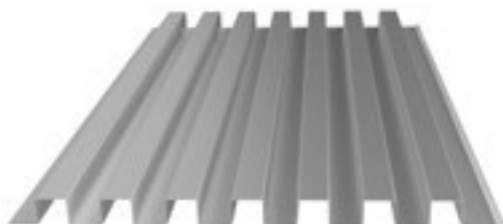
Technical characteristics

Nominal steel thickness (mm)	0.63 - 0.75
Weight (kg/m ²)	6.03 - 7.2
Working width (mm)	600
Bandwidth (mm)	1220
Max. length (mm)	4000
Min. length (mm)	750
Profiling	Block
Mounting	Visible
Colours and coatings	Arval Colorissime

Be sure to ask about our custom-made block options.



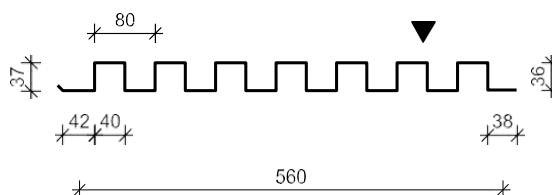
Block 40 type WP40.80.7



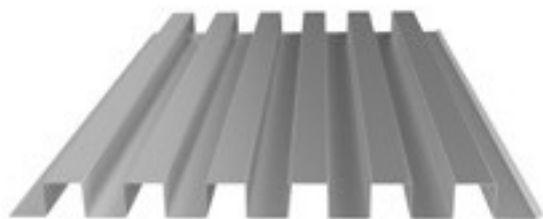
Technical characteristics

Nominal steel thickness (mm)	0.63 - 0.75
Weight (kg/m ²)	9.89 - 11.78
Working width (mm)	560
Bandwidth (mm)	1127
Max. length (mm)	5000
Profiling	Block
Mounting	Visible
Colours and coatings	Arval Colorissime

Be sure to ask about our custom-made block options.



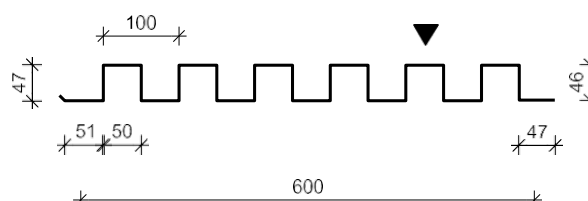
Block 50 type WP50.100.6



Technical characteristics

Nominal steel thickness (mm)	0.63 - 0.75
Weight (kg/m ²)	10.08 - 11.95
Working width (mm)	600
Bandwidth (mm)	1200
Max. length (mm)	6000
Profiling	Block
Mounting	Visible
Colours and coatings	Arval Colorissime

Be sure to ask about our custom-made block options.



Profile cladding

Block profile



Verhulstplein The Hague
Architect: Klunder



Company building Schoonhoven
Architect: Slangen & Koenis



T-Huis Tilburg
Architect: Timmermans Architecten

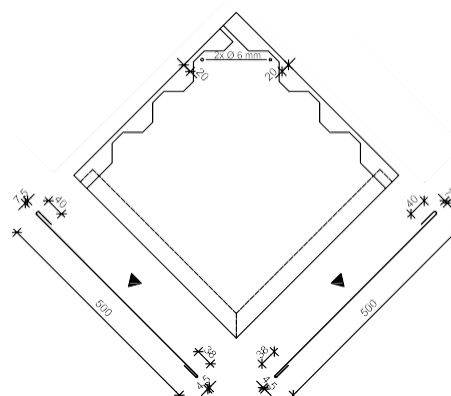
Flat lock



Technical characteristics

Nominal steel thickness (mm)	0.75*
Weight (kg/m ²)	Variable
Max. length (mm)	1000*
Max. height (mm)	800*
Profiling	Scale effect
Mounting	Blind
Colours and coatings	Arval Colorissime

* Other steel thicknesses and dimensions upon request.



Korfvis Urk - Căiman system
Intense Bronze 1829

Exclusive façade systems



Fire station Almere
Architect: GAJ

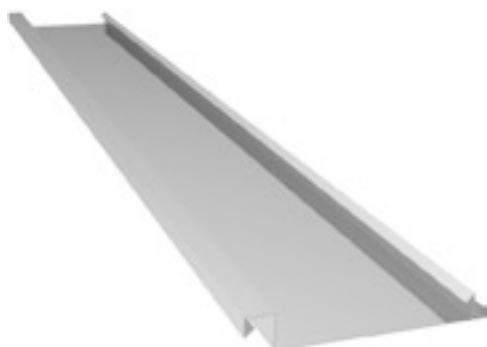


Detail Korfvis Urk - Caiman system
Intense Bronze 1829



Fire station Almere
Architect: GAJ

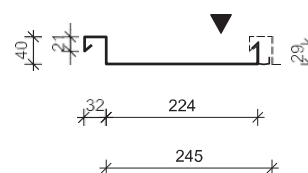
Standing seam 40-245-1B / T



Technical characteristics

Nominal steel thickness (mm)	0.63-0.75
Weight (kg/m ²)	Variable
Max. length (mm)	6000*
Profiling	Strips
Mounting	Blind
Colours and coatings	Arval Colorissime

* Can be made longer upon request.



Fire station Loosdrecht
Architect: Richard Benneker

Exclusive façade systems



Gymnasium Kernhem - liner roof - Ede
Architect: Strategie Architecten



Heijmans ONE
Architect: Mood-Builders



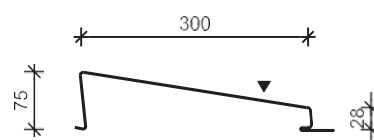
Fire service Loosdrecht
Architect: Vaessen

Over strip



Technical characteristics

Nominal steel thickness (mm)	1.00
Weight (kg/m ²)	16.50
Working width (mm)	300
Total width (mm)	340
Max. length (mm)	5000
Min. length (mm)	1000
Profiling	Gunwale effect
Mounting	Blind
Colours and coatings	Arval Colorissime



De Zwart Schoonmaak Warmond
Architect: Tordoir van den Berg Architecten

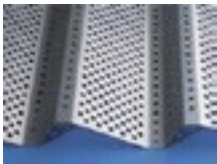
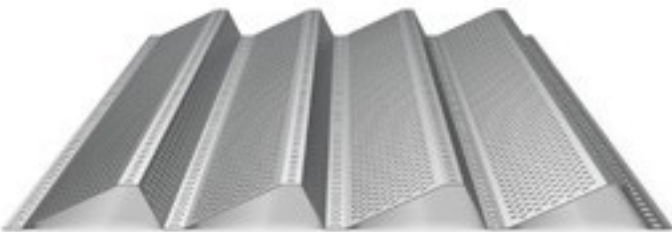


De Zwart Schoonmaak Warmond
Architect: Tordoir van den Berg Architecten



Centre Social Saint Michel Jericho - Nancy - Product: Gascogne

Sierra

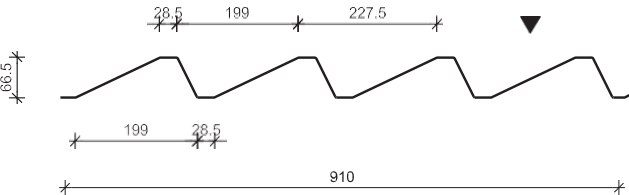


Perforation Ø 10 flow 15.7%
Perforation Ø 11.4 flow 27%

Technical characteristics

Nominal steel thickness (mm)	1.00*
Weight (kg/m²)	Variable
Working width (mm)	910
Total width (mm)	340
Max. length (mm)	5000
Min. length (mm)	1000
Profiling	Gunwale effect
Mounting	Visible
Colours and coatings	Arval Colorissime double-sided coating 2, Indaten possible

* other steel thicknesses upon request



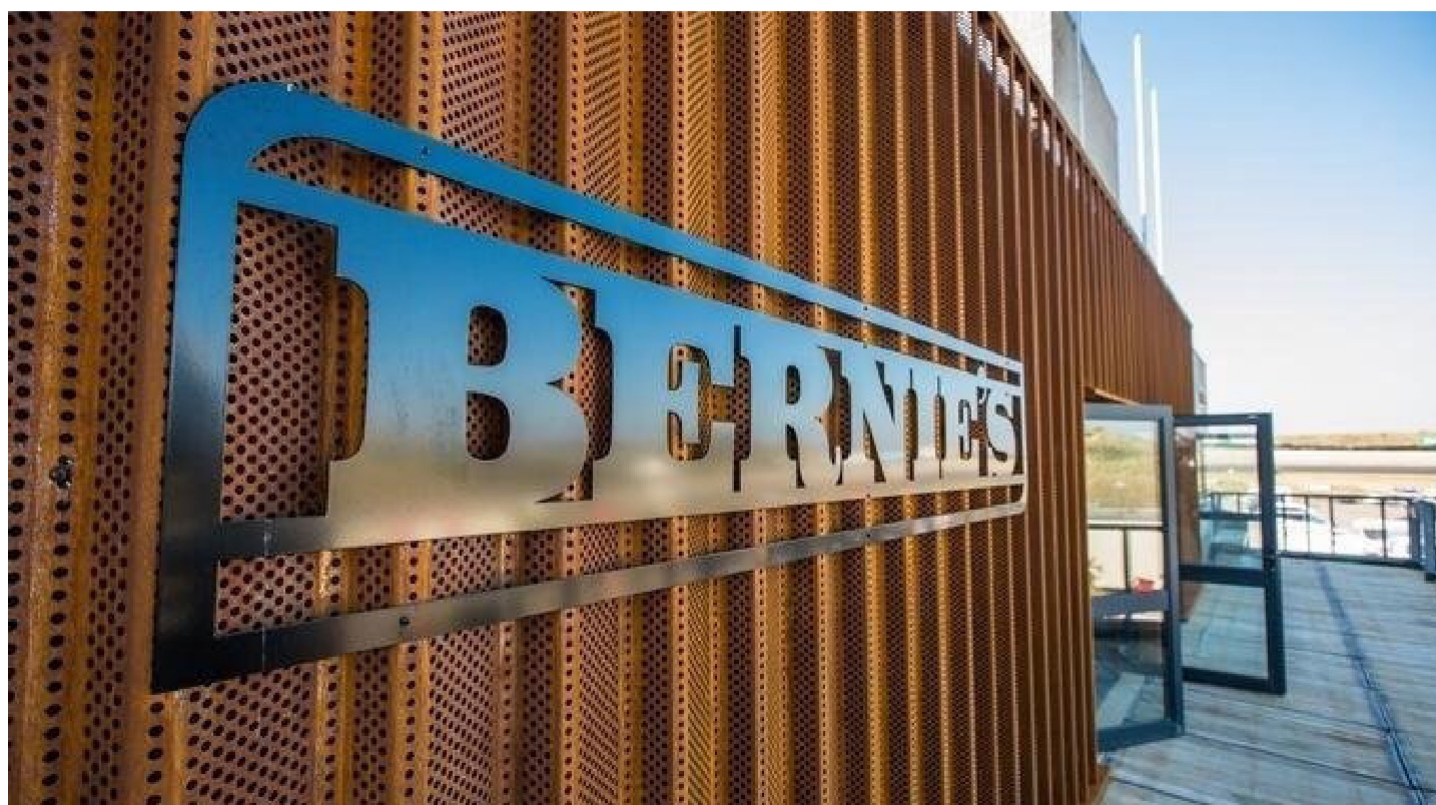
Salle Multi-Activités de Kaltenhouse (F) - Product: Mascaret
Architect: IXO Architecture



Own premises Reno projects - Product: Mascaret



Central Exclusive Wormerveer
Mascaret system - Hairexcel 6906



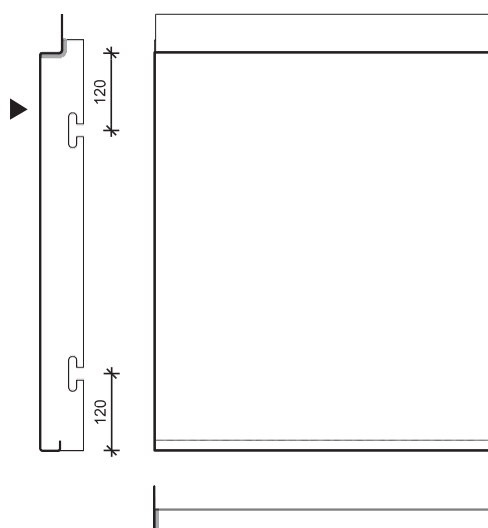
Restaurant Bernie's - Product: Mascaret Indaten®
Circuit Park Zandvoort

Cassette MD



Technical characteristics

Nominal steel thickness (mm)	1.00-2.00
Weight (kg/m ²)	Variable
Max. length (mm)	3000
Profiling	Flat, cassette façade
Mounting	Blind
Colours and coatings	Arval Colorissime



Campus Vesta
Architect: Pattern

Cassette systems



Engelbert - Deom - Product: Coque MD Indaten®



Espace multi generationnel le poinçonnet (F) - Product: Coque MD
Architect: Antoine Reale



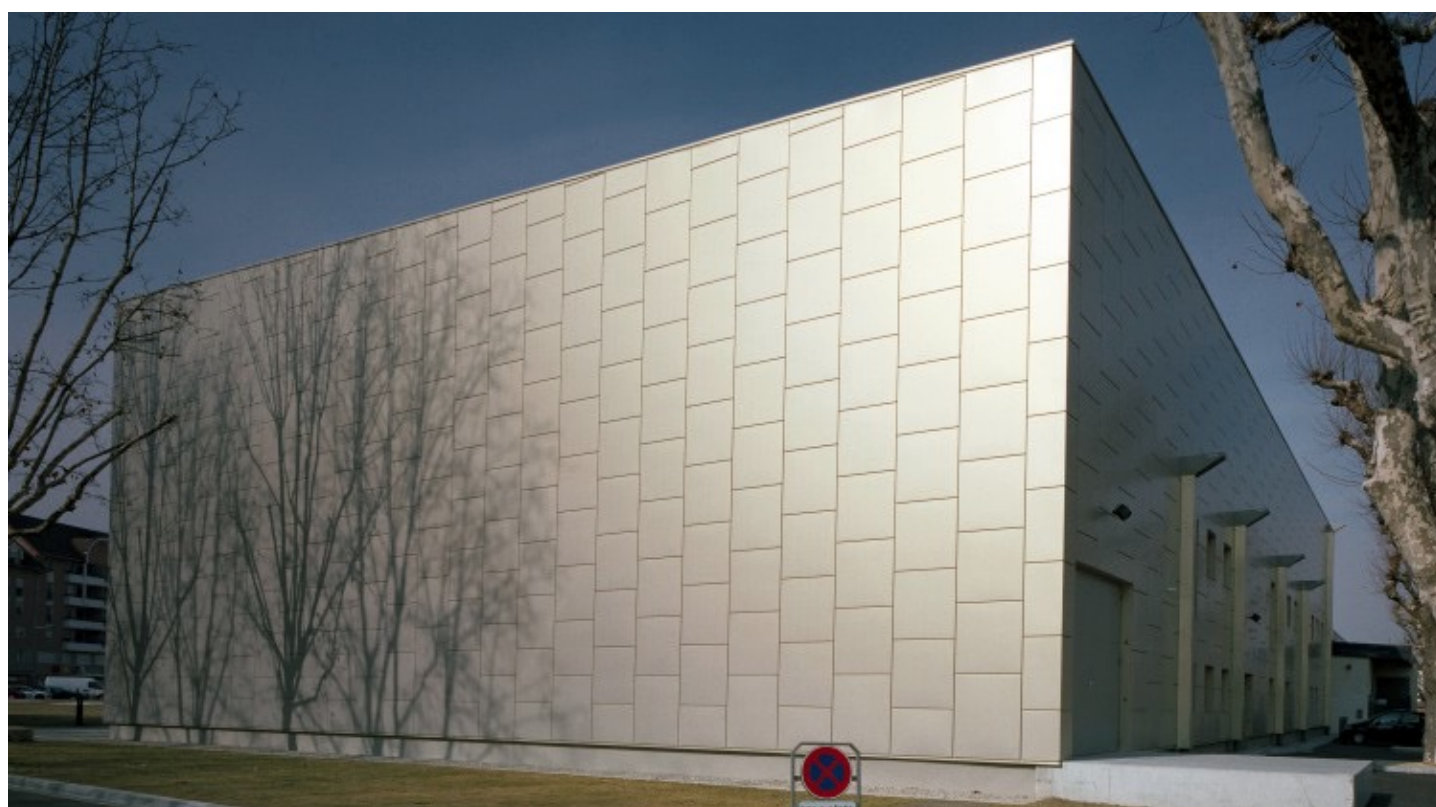
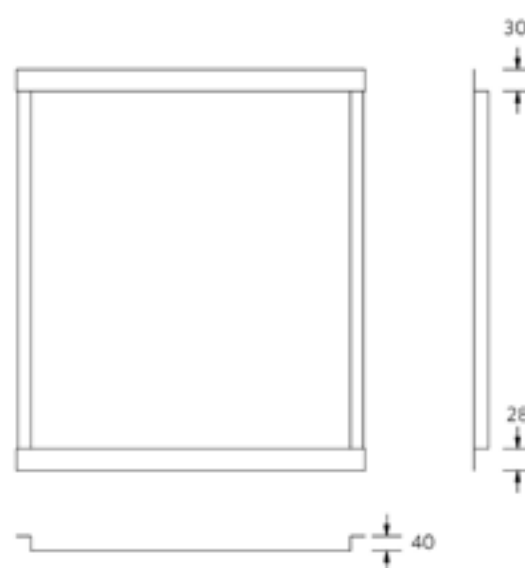
Cercle du Lac Louvain-La-Neuve (BE) - Product: Coque MD

Cassette BS



Technical characteristics

Nominal steel thickness (mm)	1.00-2.00
Weight (kg/m ²)	Variable
Max. length (mm)	3000
Profiling	Flat, cassette façade
Mounting	Visible
Colours and coatings	Arval Colorissime



Cassette systems

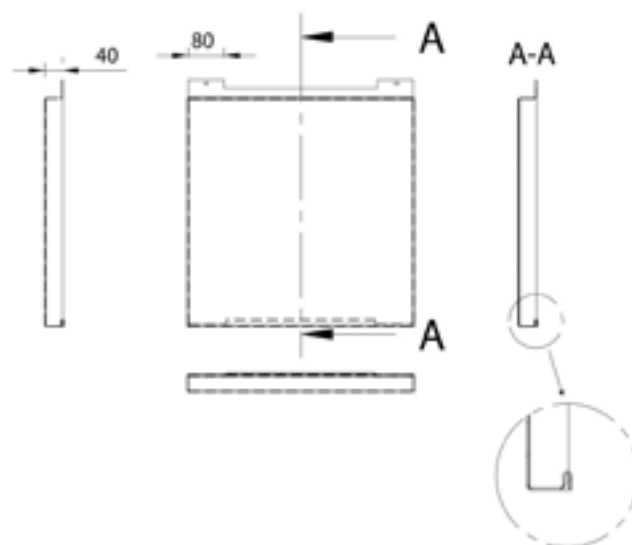


Cassette SP



Technical characteristics

Nominal steel thickness (mm)	1,00-2,00
Weight (kg/m ²)	Variable
Max. length (mm)	3000
Profiling	Flat, cassette façade
Mounting	Blind
Colours and coatings	Arval Colorissime



Autotron Exclusive Rosmalen
Architect: Jacobs

Plank profile visible



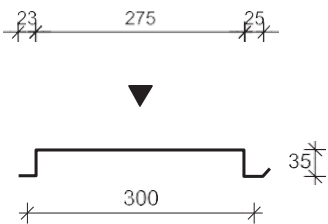
PWZ-35/300



Technical characteristics

Nominal steel thickness (mm)	0.63-1.50
Weight (kg/m ²)	Variable
Max. length (mm)	6000*
Mounting	Visible

* Can be made longer upon request.



Other dimensions upon request.



Renovation Capelle aan de IJssel



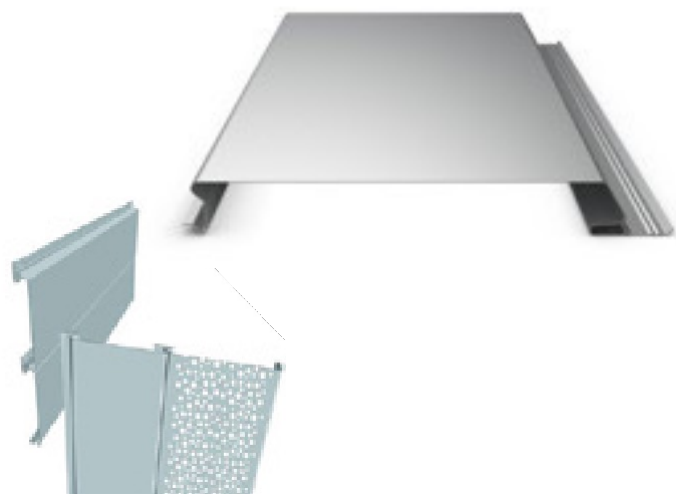
Total - Den Helder



Plank profile secret fixed



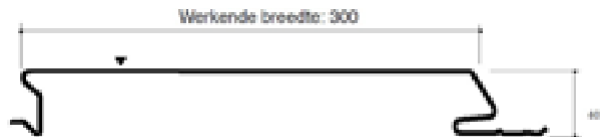
Hairplan 300



Technical characteristics

Nominal steel thickness (mm)	1.00
Weight (kg/m²)	12.56
Working width (mm)	300
Bandwidth (mm)	1000
Max. length (mm)	10000
Min. length (mm)	1900
Profiling	Flat
Mounting	Blind
Colours and coatings*	Arval Colorissime

The plank profile can also be perforated to provide the desired acoustic/aesthetic characteristics.



Koning Koudetechniek Bakel
Architect: Van Houtum architecten



NTR tram depot Nieuwegein
Architect: DP6 architecten



Business Center Roerpoort Roermond
Architect: Ruimtemakers Architecten

Plank profile secret fixed



PW0-35/300



Technical characteristics

Nominal steel thickness (mm)	0.75-0.88
Weight (kg/m ²)	Variable
Max. length (mm)	4000
Mounting	Secret fixed



X = variable (max. 300)

Y = variable (max. 40)



Perforated plank profiles



Martinihal Vught
Architect: Vaessen bv

Plank profile secret fixed

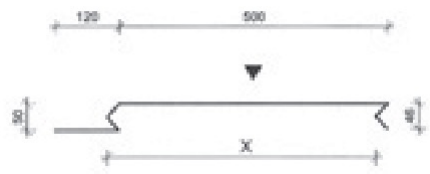


ST-500NL



Technical characteristics

Nominal steel thickness (mm)	0.75-1.50
Weight (kg/m²)	Variable
Max. length (mm)	4000
Mounting	Secret fixed



X = variable (max. 500)



BNP Paribas
Product: ST500NL - Inox BA



Leiden University - De Meeuw
Product: ST500NL - Granite Silky Mat Anthracite

Profile cladding A-symmetrical



Eclectic



Technical characteristics

Nominal steel thickness (mm)	0.63-0.75
Weight (kg/m ²)	8.37-9.97
Max. length (mm)	12 (vertically mounted)
Max. length (mm)	9.50 (horizontally mounted)
Profiling	asymmetrical
Mounting	visible
Colours and coatings*	Colorissime

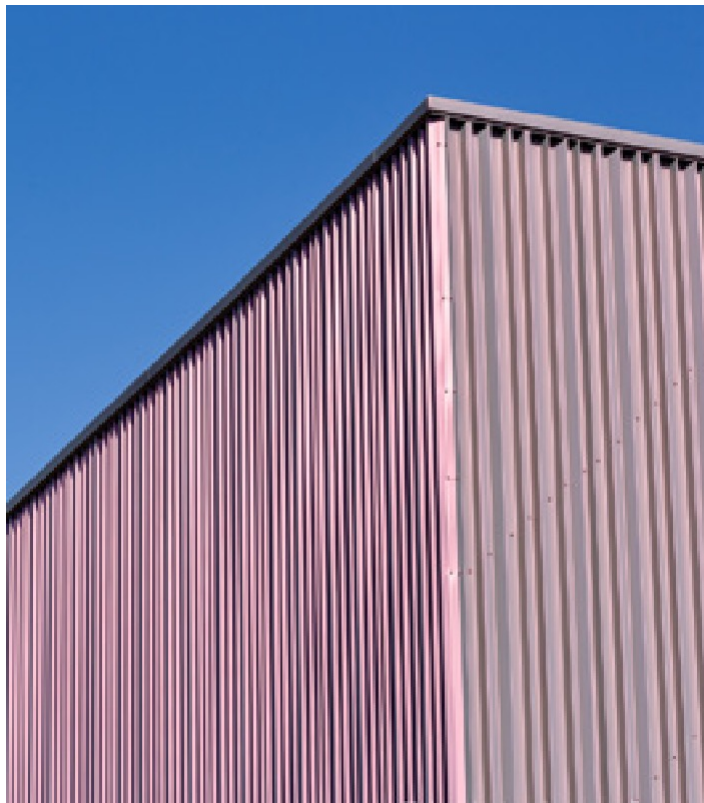


2 types possible:
G= 7.35.50 B/HB
D= 7.61.50 B/HB



Renovation Hilversum
Architect: SUM+ Architecten

Profile cladding A-symmetrical



Arma Keukens
Architect: Buro Holdijk



Savenay sports hall
Product: Eclectic - Pearl Camelia Perla 1343
Architect: Le Borgne

metalliks®

Metal panel solutions for architectural envelopes

We offer a wide range of colours.

Besides our product brochures, be sure to ask for our colour charts to see all the options in terms of colours.



www.mfe.mx