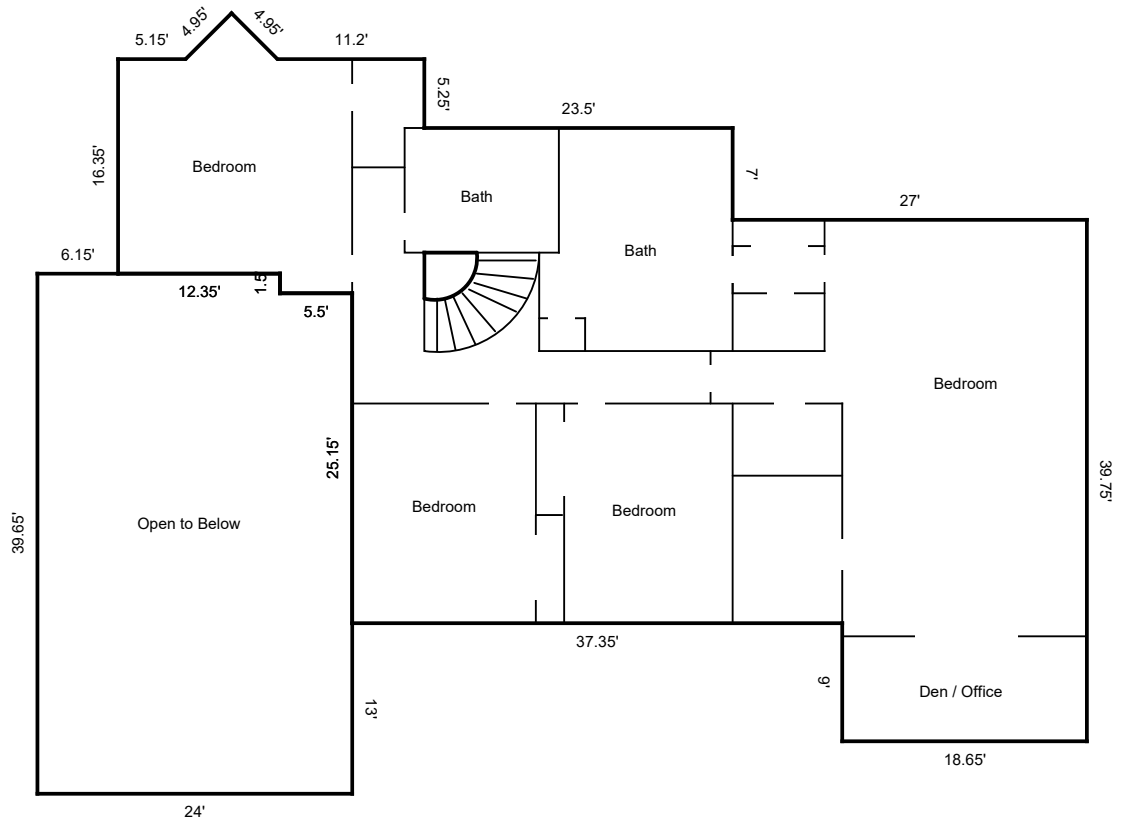


TOTAL Sketch by a la mode, inc.

Area Calculations Summary

Living Area		Calculation Details	
First Floor	2707.33 Sq ft	$10.5 \times 4.5 =$	47.25
		$0.5 \times 2.5 \times 2.5 =$	3.12
		$0.5 \times 2.5 \times 2.5 =$	3.12
		$12.5 \times 2.5 =$	31.25
		$24 \times 18.5 =$	444
		$61.7 \times 23.85 =$	1471.54
		$55.55 \times 4.25 =$	236.09
		$46.55 \times 5.5 =$	256.02
		$32.2 \times 1.6 =$	51.52
		$19.55 \times 5 =$	97.75
		$0.5 \times 7 \times 3.5 =$	12.25
		$5.7 \times 2 =$	11.4
		$6 \times 7 =$	42
Total Living Area (Rounded):	2707 Sq ft		
Non-living Area			
3 Car Attached	1086.75 Sq ft	$27 \times 31.5 =$	850.5
		$10.5 \times 22.5 =$	236.25



TOTAL Sketch by a la mode, inc.

Area Calculations Summary

Living Area		Calculation Details
Open to Below	-12.23 Sq ft	$0.5 \times 3.5 \times 4 = 7$ Arc = 5.23
Second Floor	2434.07 Sq ft	$0.5 \times 7 \times 3.5 = 12.25$ $23.35 \times 5.25 = 122.59$ $46.85 \times 7 = 327.95$ $73.85 \times 4.1 = 302.79$ $61.5 \times 1.5 = 92.25$ $56 \times 25.15 = 1408.4$ $18.65 \times 9 = 167.85$
Open to Below	-943.35 Sq ft	$24 \times 38.15 = 915.6$ $1.5 \times 18.5 = 27.75$

Total Living Area (Rounded):

2423 Sq ft TOTAL Sketch software by a la mode, inc. 1-800-alamode