

# STACKIN' EIGHTS



TM

## SOUTHERN TRIBE WITH A HIPPIE VIBE

Stackin' Eights is tearing up the rules of Southern rock. Fusing the raw, whiskey-soaked grit of Southern rock with a rebellious hippie soul, their sound punches hard and lingers like smoke in the air. This is music for the bold, the free-spirited, and those who like their rock with a side of poetry and fire.







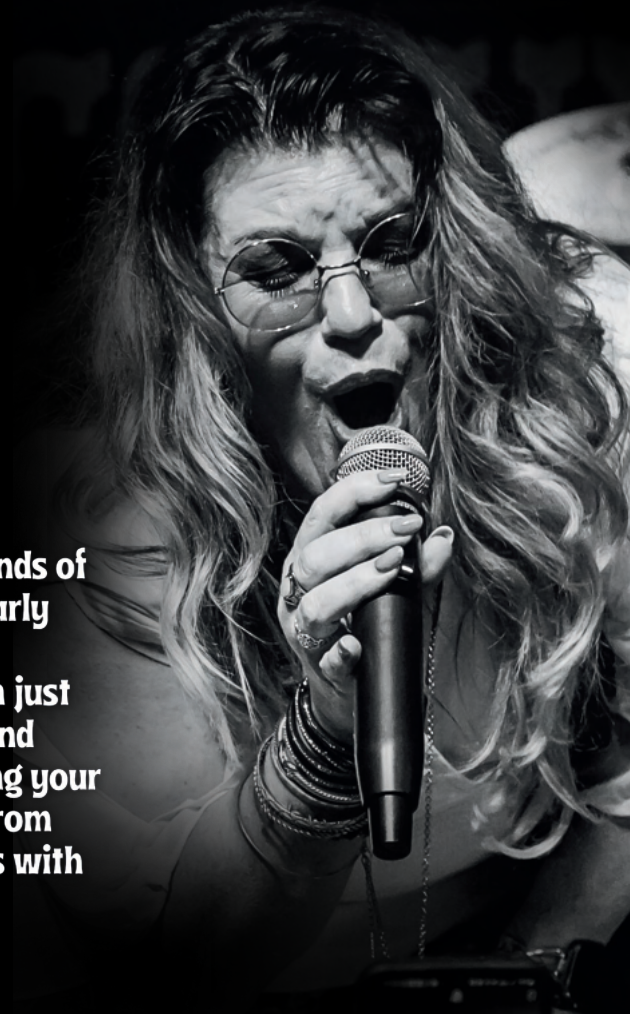
## BIOGRAPHY

### A SOUTHERN ROCK STORY THAT HITS HOME

Known for their fierce live shows and magnetic stage presence, this Evansville-based band brings together the rugged charm of classic rock with a fresh, panoptic vibe. They're the sound of coal fueled trains, muscadine wine, and the stories that linger long after the encore. Stackin' Eights isn't just a band; they're a movement, a powerhouse of Southern Rock grit and raw energy that has electrified audiences across the Midwest.

At the heart of Stackin' Eights is Stevie Lee, a South Florida native and former combat medic whose journey from the battlefields to the main stage has been anything but ordinary. After a 14-year stint in the U.S. Army as a combat medic, Stevie landed in Evansville, Indiana, ready to turn life's battles into songs. Inspired by legends like The Allman Brothers Band and Lynyrd Skynyrd, Stevie channels his roots into every lyric and riff, creating music that feels both timeless and unapologetically authentic. His songwriting isn't just a craft—it's a calling, a relentless outpouring of stories, emotions, and southern soul.

Misty Dawn, on the other hand, was raised on the honest sounds of gospel and the deep, soulful roots of country and blues. Her early years were filled with music and church choir shaped by the rhythms of life in small-town America. Her voice is more than just an instrument—it's a connection, a bridge between her soul and their audience. When Misty steps up to the mic, it's like hearing your favorite memory come to life: raw, real, and unforgettable. From her first note, she commands attention, captivating audiences with an ability to convey raw emotion and bring a room to life.







But what truly sets them apart is their story. It's a story of perseverance, hard work, and the unshakable belief that music has the power to bring people together. It's the story of Stevie Lee, a combat medic turned southern rock frontman, and Misty Dawn, a Midwest songbird with a voice that commands the heavens. It's the story of a band that's more than music—they're a force.

With a growing fanbase, buzz-worthy regional performances, and a sound that bridges the best of classic and soul rock, Stackin' Eights is ready to take the next step. This isn't just the future of southern rock. This is Stackin' Eights.



## EPK VIDEO

---







**“Janis in the front, Skynyrd in the back!”**

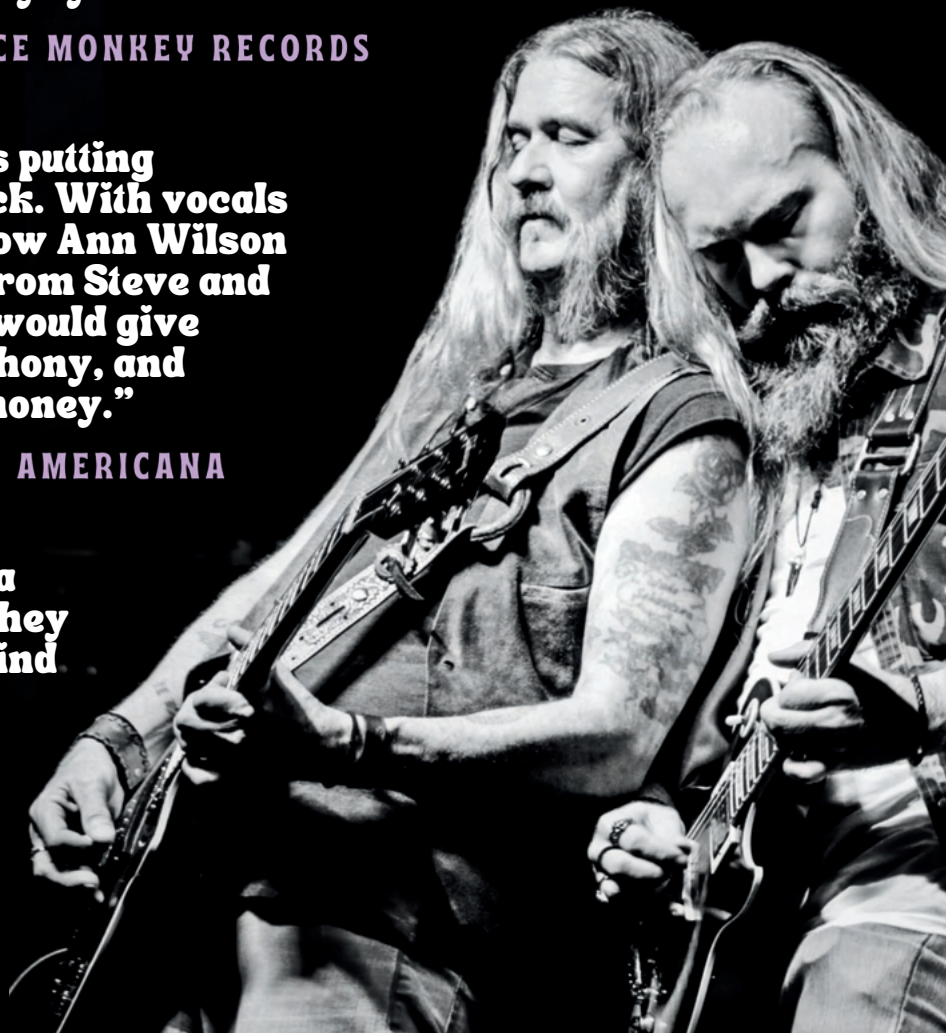
**-PATRICK, SPACE MONKEY RECORDS**

**“A band from Evansville that is putting nitrous oxide into Southern Rock. With vocals from Misty Dawn that would wow Ann Wilson and Koko Taylor, guitar riffs from Steve and Preston Lee, along with Mark, would give Garry Rossington, Michael Anthony, and Duane Allman a run for their money.”**

**-CROSSROADS OF AMERICANA**

**“I heard these guys were gonna bring it and tear the roof off. They came, they saw, and we can't find our frigging roof-wow!!!”**

**-JEB BROWN PRODUCTIONS**





# DISCOGRAPHY

---



## MADE IN GEORGIA

Their debut album, *Made in Georgia*, was recorded with the legendary Paul Hornsby, who's worked with the likes of the Charlie Daniels Band and the Marshall Tucker Band. From the first note to the last, it's clear Stackin' Eights isn't just following in the footsteps of southern rock—they're carving their own path, blending bluesy soul, rock 'n' roll grit, and a touch of folk poetry to create something timeless.

## YEAR OF THE EIGHTS

Stackin' Eights' sophomore album, *Year of the Eights*, produced by Jack Gavin (Charlie Daniels' Band, Tracy Lawrence, Tanya Tucker) at Rising Sun Studios, is a testament to their relentless evolution. With a sound that roars like Southern thunder and lyrics that cut to the bone, the album captures the raw power of their live energy while pushing the boundaries of their artistry. It's not just an album—it's a declaration of who they are and where they're headed.



**BLEED**



**MY MOUNTAIN  
TO CLIMB**



**SWEET LIZELLA**





# Misty Dawn

THE NEW QUEEN OF SOUTHERN ROCK

---





# Stevie Lee

SONGWRITER, VOCALIST, GUITARIST

---

