

# clever

T A P S & S H O W E R S

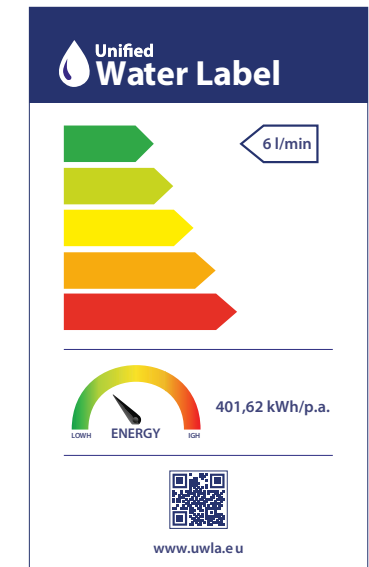


**VELVET**Collection  
*in different finishes*

clever  
G R I F E R Í A



The commitment of  
Clever with sustainability and  
energy efficiency is rewarded  
with the UWLA label.



The change to a more environmentally responsible consumption model and **Clever's firm commitment to sustainability and energy efficiency** of its products has been rewarded with the **UWLA label**. A recognition of the effort and innovation that makes us proud.

The **UWLA label, Unified Water Label Association**, aims to establish the standardized energy classification throughout Europe for all products that use water in their operation so that the user can visually understand their level of energy efficiency. In this way, when choosing a product with the **UWLA** distinction, the user is guaranteed to have chosen a product that will help them consume water and energy in a more intelligent and efficient way.

In **Clever** we are proud to be one of these more than 160 international brands that have products distinguished with UWLA label in their catalog. At the moment, **97 of the products** of our catalog already have this labeling, guaranteeing their efficiency in the use of water and energy. Among all these products with the UWLA labeling, there are the new series of taps **VELVET (Velvet I, II and III)**, one of the great new features of the 2023 catalogue.

**At Clever we reaffirm our commitment to sustainability and the environment, with products that allow our users to consume resources more responsibly on a daily basis.**



Discover the collection of Velvet taps in 3 different finishes: brushed gold, brushed gun metal and black.





# Velvet I



*in different finishes*



Matt black



Brushed gun metal



Brushed gold

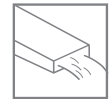
NEW

Velvet I

Velvet II has an exquisite harmonious and timeless design, with **lines curves with a lot of style and unique personality**, with **three** different **finishes**, matt black, brushed gun metal and brushed gold that will fit perfectly with any type of decoration.

It also has the **ECO SYSTEM** technology, a system with **limited flow rate of 6 l/min** achieving a major **saving water**. And also with a **waterfall aerator**.

Features and Certifications:



Ref. 61939



Ref. 61940



Ref. 61941

Basin mixer 230, ideal for bowl basins



Ref. 61936



Ref. 61937



Ref. 61938

Basin mixer 105



# Velvet II



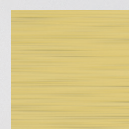
*in different finishes*



Matt black



Brushed gun metal



Brushed gold

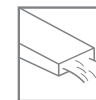
NEW

Velvet II

Velvet II it's a **elegant, and exclusive model with straight lines** with **three** different **finishes**, matt black, brushed gun metal and brushed gold that will provide a distinctive touch to the room.

It also has the **ECO SYSTEM** technology, a system with **limited flow rate of 7 l/min** achieving a major **saving water**. And also with a **waterfall aerator**.

Features and Certifications:



Ref. 61945



Ref. 61946



Ref. 61947

**Basin mixer 225**, ideal for bowl basins



Ref. 61942



Ref. 61943



Ref. 61944

**Basin mixer 110**





# Velvet III

*in different finishes*



Matt black



Brushed gun metal



Brushed gold

NEW

Velvet III

Velvet III is a **curved with voluptuous lines model** with **three** different **finishes**, matt black, brushed gun metal and brushed gold. A complete proposal perfect for any bathroom, whatever its style.

It also has **ECO SYSTEM** technology, a system with **limited flow rate of 5 l/min** achieving a major **saving water**, and also with an **adjustable aerator**, which allows water to be directed to the desired direction, achieving greater comfort.

Features and Certifications:













Ref. 61951

Ref. 61952

Ref. 61953

**Basin mixer 230**, ideal for bowl basins





Ref. 61948

Ref. 61949

Ref. 61950

**Basin mixer 100**





Extension of the range **NEW**



Ref. 62247



Ref. 62248



Ref. 62249



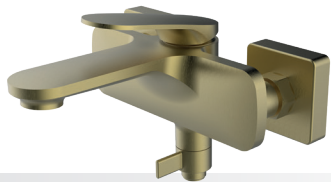
Bidet mixer



Ref. 62250



Ref. 62251



Ref. 62252



Bath-shower mixer



Ref. 62253



Ref. 62254



Ref. 62255

Shower mixer





Cod. 61959

## RELATED PRODUCTS

COMPLEMENT AND COMBINE  
*in brushed gold*



Cod. 61956



Cod. 61975



Cod. 61979



Cod. 61961



Cod. 61977

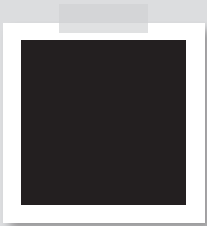




Cod. 61738

RELATED PRODUCTS

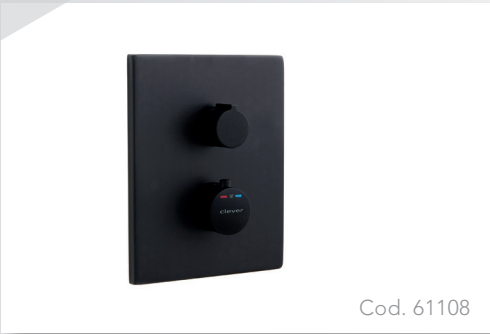
COMPLEMENT AND COMBINE  
*in matt black*



Cod. 61009



Cod. 61118



Cod. 61108



Cod. 60702



Cod. 61122



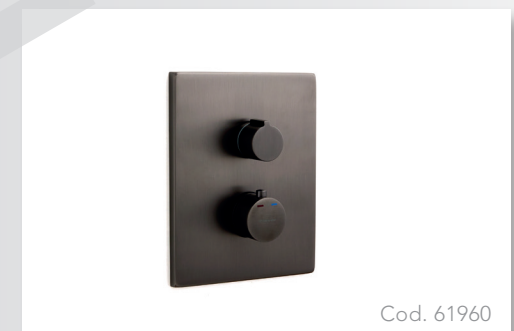
COMPLEMENT AND COMBINE  
*in brushed gunmetal*



Cod. 61954



Cod. 61974



Cod. 61960



Cod. 61978



Cod. 61976



Cod. 61952

Cod. 61958



www.clevertaps.com



## **sth** Standard Hydraulics Group

### **Standard Hidráulica, S.A.U.**

Av. La Ferrería 73-75  
Pol. Ind. La Ferrería  
08110 Montcada i Reixac  
Barcelona (Spain)  
Tel. +34 93 564 10 94

[www.standardhidraulica.com](http://www.standardhidraulica.com)

### **Standard Hidráulica, S.A.U.**

C. Galileo Galilei, 5  
28906 Getafe  
Madrid (Spain)  
Tel. +34 91 692 05 53  
Tel. +34 91 643 18 86

[www.standardhidraulica.com](http://www.standardhidraulica.com)

### **STH Westco**

Unit C6, William Way  
Moss Industrial Estate  
St Helens Road, Leigh,  
Lancashire - WN7 3PT (UK)  
Tel. +44 (0)1942 603351  
Fax. +44 (0)1942 607780

[www.westco.co.uk](http://www.westco.co.uk)

### **STH Southern Africa Plumbing & Heating Equip. (Pty) LTD**

2, Northriding Commercial Park,  
Aintree Ave., Northriding  
South Africa  
Tel. +27 11 462 4504

[www.sthza.co.za](http://www.sthza.co.za)

### **STH Hellas Plumbing & Heating Equipment,S.A.**

Alexandras str. (Magoula)  
Aspropyrgos 19300  
Greece  
Tel. +302102842684  
Fax. +302102840700

[www.standardhidraulica.gr](http://www.standardhidraulica.gr)