

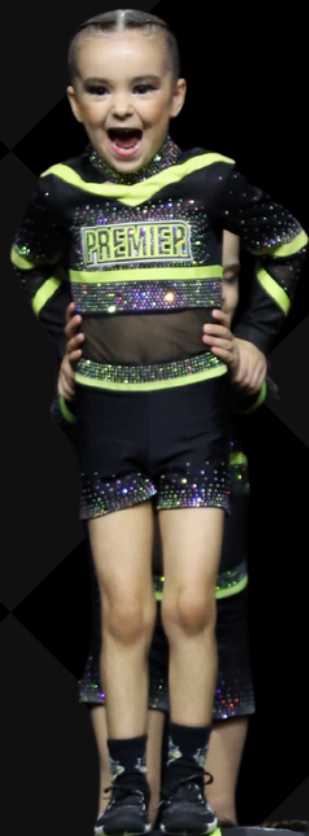


PREMIER

CHEER ELITE

COMPETITION INFORMATION PACK

2025





WHO ARE WE?

We opened Premier Cheer Elite in 2023 with the vision of creating a safe, supportive environment where athletes can thrive both physically and mentally. Our passion is to share our expertise while helping athletes grow, not just in skill but in confidence, discipline, and resilience. Cheerleading instills values and life skills that last a lifetime, and the connections made within the team go beyond friendship, they become family. We believe in building not just strong athletes, but a close-knit cheer family that supports one another every step of the way!

Background:

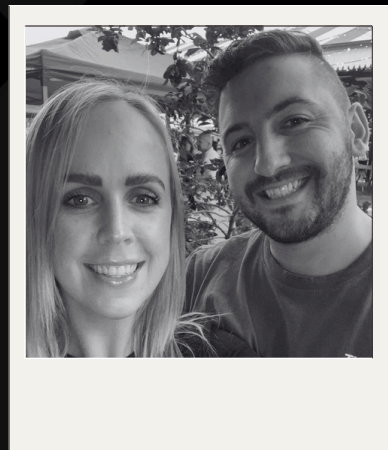
- Gymnastics
- Power Tumbling
- Trampolining
- Cheer
- Partner Stunting

Qualifications:

- Rhi Diploma in Early Childhood Education
- Cheer and Tumble Credentials Level 6
- First Aid

Achievements:

- Multiple National and Grand Champion Titles
- World Cheerleading Championships x5
- Gen Next Down Under tumble coach (selected to work with the top 50 tumblers in Australia)
- Combined 20yrs+ coaching experience



Coach Rhi & Kurt



2025 TERM DATES

Term 1: 10 weeks Holidays	Monday 3rd February to Sunday 13th April CHOREOGRAPHY DATES TBC (end of Term 1) Monday 14th April to Sunday 27th April CLOSED Recommended time to book Family Holidays
Term 2: 10 weeks Holidays	Monday 28th April to Sunday 6th July CLOSED Monday 9th June King's Birthday Monday 7th July to Sunday 20th July CLOSED Recommended time to book Family Holidays
Term 3: 10 weeks Holidays	Monday 21st July to Sunday 28th September Monday 29th SEP to Sunday 12th OCT CLOSED Recommended time to book Family Holidays
Term 4: 8 weeks	Monday 13th October to Sunday 21st December Closed for AASCF Nationals Wednesday 19th Nov to Tues 25th Nov



All Holidays must be taken during the holiday periods above. By joining a competition team you are committing to full attendance during the dates above.

We will always return on a MONDAY regardless of pupil free days so please keep this in mind when booking Holidays.



2025 COMPETITIONS

	PCE Showcase	Cheercon Icebreaker SYDNEY	AASCF Battle SYDNEY	Cheercon State SYDNEY	Battle at the Beaches NEWCASTLE	Cheerbrandz Nationals SYDNEY	AASCF Nationals MELBOURNE	Cheercon Nationals SYDNEY
Cheerstars	✓			✓	✓			✓
Allstars	✓	✓	✓	✓	✓	✓	✓	

PCE Showcase	Saturday 28th June	PCE Gym (times to be confirmed)
Cheercon Icebreaker	4th-6th July	ICC Darling Harbour
AASCF Battle	15th-17th August	Quay Centre, Sydney Olympic Park
Cheercon State	5th-7th September	ICC Darling Harbour
Battle at the Beaches	24th-26th October	Newcastle (Venue TBC)
Cheerbrandz Nationals	7th-9th November	Sydney Showground Sydney Olympic Park
AASCF Nationals	20th-24th November	Melbourne Convention and Exhibition Centre, VICTORIA
Cheercon Nationals	5th-7th December	ICC Darling Harbour

Competition Running Orders are not released until 1-2 weeks prior to each competition. Please keep the whole weekend free including Friday. Athletes must arrive at competitions in full comp uniform with hair and makeup done. Athletes will not be permitted to leave before their awards session.





OUR PROGRAMS

CHEERSTARS (SEMI-COMPETITIVE)

Discover the ideal gateway to the world of competitive cheerleading. Learn foundational elements of cheer. This program is best for beginners and those who are after a relaxed more affordable option.

Compete in 2 competitions in Sydney and 1 in Newcastle.

CHEERSTAR TEAM 1.5hrs cheer (1 training session per week during school terms)		CHEERSTAR TEAM PLUS ADDITIONAL TUMBLE 1.5hrs cheer, 45mins tumble class (2 training sessions per week during school terms)	
YEARLY ASSESMENTS*	\$501	YEARLY ASSESMENTS*	\$501
DUE AT REGISTRATION	\$200	DUE AT REGISTRATION	\$200
YEARLY TUITION	\$1254	YEARLY TUITION	\$1634
APPAREL PACKAGE**	\$170	APPAREL PACKAGE**	\$170
YEAR TOTAL:	\$1925	YEAR TOTAL:	\$2305
Option 1: 11 Monthly Direct Debit FEB-DEC due 1st of each month	\$157 per month	Option 1: 11 Monthly Direct Debit FEB-DEC due 1st of each month	\$192 per month
Option 2: Weekly Direct Debit (44 weeks) 3rd Feb-1st Dec	\$40 per week	Option 2: Weekly Direct Debit (44 weeks) 3rd Feb-1st Dec	\$48 per week

***We highly recommend doing the additional tumble class if possible
This tumble class will be on a separate day to your Cheerstars Team.**

***Assessments include:**

- 3 competition entry fees
- Custom music
- Athlete Insurance
- Athlete Entry Awards Night
- Coaches Fees

****Apparel Package includes:**

- Competition Uniform (basic uniform, different to All-star) \$150
- 2025 T-Shirt \$20



OUR PROGRAMS

ALLSTARS (FULL-COMPETITIVE)

Discover the ultimate gateway to the world of competitive cheerleading. Athletes will master advanced cheerleading techniques, focusing on stunts, tumbling, jumps, and dance, preparing them for the highest level of competition. This program is ideal for athletes who are ready to commit to an intensive training schedule and push their skills to the next level. Compete in 4 competitions in Sydney, 1 in Newcastle, and the prestigious AASCF Nationals in Melbourne.

ALLSTAR TEAMS 3hrs cheer, 45min tumble class (2 training sessions per week during school terms)		ALLSTAR TEAM PLUS ADDITIONAL TUMBLE 3hrs cheer, 2x45mins tumble classes (2 training sessions per week during school terms)	
YEARLY ASSESMENTS*	\$990	YEARLY ASSESMENTS*	\$990
DUE AT REGISTRATION	\$200	DUE AT REGISTRATION	\$200
YEARLY TUITION	\$2280	YEARLY TUITION	\$2660
APPAREL PACKAGE**	\$380	APPAREL PACKAGE**	\$380
YEAR TOTAL:	\$3650	YEAR TOTAL:	\$4030
Option 1: 11 Monthly Direct Debit FEB-DEC due 1st of each month	\$314 per month	Option 1: 11 Monthly Direct Debit FEB-DEC due 1st of each month	\$349 per month
Option 2: Weekly Direct Debit (44 weeks) 3rd Feb-1st Dec	\$79 per week	Option 2: Weekly Direct Debit (44 weeks) 3rd Feb-1st Dec	\$88 per week

*Assessments include:

- 6 competition entry fees
- Custom music
- Choreography
- Athlete Insurance
- Athlete Entry Awards Night
- Coaches Fees

**Apparel Package includes:

- Competition Uniform \$275
- Training Set \$85
- 2025 T-Shirt \$20

Want to compete on 2 teams?

- 2 teams, 1 tumble \$114 per week
- 2 teams, 2 tumble: \$123 per week



OTHER COSTS

Competition Travel Expenses: Families are responsible for their own travel arrangements and expenses to and from competitions. Sometimes accommodation is required if we have an early start to a competition. We recommend booking accommodation at the start of the year for all comps with free cancellation. Remember sometimes we could compete on Friday during the day which means a day off work/school.

Spectator Entry Fees: All comps require spectators to pay an entry fee. This is usually around \$30 per day.

Cheer Shoes:

All-Star athletes must purchase BLACK FLYTES from cheerdirect.com.au (Roughly \$200)

Cheerstar athletes we highly recommend these shoes however they are not compulsory. Any plain black joggers are fine.

Pro Shop: (optional for purchase on our website)

- PCE tank top \$40
- PCE Backpack \$95
- PCE socks \$15
- PCE jumper \$85

Private Lessons:

There's simply no substitute for the personalized attention of one-on-one coaching. If you're truly committed to advancing your tumbling and stunting skills, we wholeheartedly endorse the benefits of a private lesson. Coach Rhi specializes in tumbling mastery, while Coach Kurt excels as an expert in partner stunting as well as tumbling. Act swiftly to secure your spot, as our availability is extremely limited! Don't miss out on this exclusive opportunity for personalized coaching excellence.

Semi-tumble private 2 athletes to 1 coach \$30pp

Stunt Private one-on-one \$45

Must be paid in cash on arrival or added to weekly direct debit



TIMETABLE

	Monday		Tuesday	Wednesday		Thursday		Friday
400pm	Rec Beginner		Sapphires 4-530pm	Rec Beginner/Walkovers		Rec Walkovers 4-445pm	Crystals 4-530pm	Opalites 430-6pm
415pm	4-445pm			4-445pm				
430pm	Emeralds 430-545pm			Emeralds 430-530pm				
445pm								
500pm								
515pm	Moonstones 515-645pm		Emeralds Tumble 530-615		Crystals Tumble 530-615			
530pm								
545pm								
545pm	Emeralds Tumble	Crystals Tumble	Rubies 630-8pm	FLYER CLASS 615-645pm	Rec Handsprings 615-7pm	FLYER CLASS 615-645pm	Opalites Tumble 6-645pm	
600pm	545-630	545-630						
615pm	Crystals 630-8pm	Rec Walkovers 630-715pm						
630pm								
645pm								
700pm								
715pm			Silver Squad 645-815pm	Opalites 645-815pm		Silver Squad 645-815pm		
730pm								
745pm								
800pm								
800pm	8pm FINISH		8pm FINISH					
815pm			Silver Squad Tumble 815-9pm		Opalites Tumble 815-9pm		Silver Squad Tumble 815-9pm	
830pm								
845pm								
900pm								
			9pm FINISH		9pm FINISH		9pm FINISH	





FINANCIAL TERMS

By joining Premier Cheer Elite Competition Teams you are committing to the FULL COMPETITION SEASON which is from February to December 2025. Payments are non-refundable and not credited if an athlete is absent due to illness, holidays, or other commitments. If an athlete is out for longer than 2 weeks due to injury, then a doctor's certificate must be supplied, and the account may be credited pending approval.

Late payments are not acceptable and will result in your child being withdrawn from the team. Prices include 10% GST. Processing fees will apply to all payments.

All competition families MUST enrol in Ezi-debit for the full year. There is no postponing of payments allowed. If a payment is unsuccessful it must be paid within the week or your child will not be able to attend classes. You may choose to either pay the full year upfront or go onto a monthly/weekly direct debit payment plan.

All private lessons are to be either paid in cash upon arrival each week or added to your weekly direct debit. Less than 24 hrs notice of non attendance requires full payment.

Please email admin@premiercheerelite.com.au if you have any questions.

ATTENDANCE

Competition Teams must adhere to a strict attendance policy. Cheerleading is a TEAM sport and if one person is absent it affects the whole team. Please plan ahead and make sure athletes arrive early to their practise times so they are not late. Carpooling is recommended if you live further away.

Trainings are closed. Only athletes are allowed on the floor. We encourage parents to drop off and pick up to avoid traffic congestion in the carpark. We find that athletes are more focused and able to concentrate without any distractions. We will take plenty of photos and videos and parents will be invited in occasionally towards comp season to watch routines.

Excused Absences

- Compulsory School Function
- Death in the Family
- Infectious illness/vomiting
- Serious injury

Please communicate ALL absences by email admin@premiercheerelite.com.au as early as possible.

An excessive amount of unexcused absences may result in the athlete being asked to leave our competition programs. Please book holidays during the holiday periods recommended.



TRAINING ATTIRE

Allstar teams: Training set must be worn to all practices.
Cheerstar teams: Black crop top and bike shorts or training set

Cheer shoes/flat soled shoes must be worn. Baggy shirts/jumpers must be removed after warm up for safety reasons, this also allows coaches to better see/fix body shapes in tumbling and stunting.

Hair must be tied up neatly and off the face. All jewellery/watches must be removed. Small stud earrings/sleepers are allowed

COMPULSORY LESSONS

All competitions are compulsory for all athletes. Please note that the two weeks leading up to any competitions are 'Black Out' weeks. This means that these trainings must not be missed under any circumstances. Non-attendance might mean withdrawal from the competition and for the remainder of the season.

Competition Running Orders are not released until 1-2 weeks prior to each competition. Please keep the whole weekend free including Friday as sometimes we do compete on Friday morning.





COMMUNICATION

Who to contact:

If you need to clarify any information or have any questions please feel free to contact us via email: admin@premiercheerelite.com.au
Please do not approach staff during training times as we do have back to back classes.

Location:

Unit 11, 103 Stenhouse Drive, Cameron Park, NSW 2285

Private Facebook Group:

All competition families must join our private facebook group. This is a great way to communicate all information and stay up to date with what is going on. Please check this regularly and ensure your notifications are turned on. Search PCE Family in facebook groups. We also have a private instagram @pce.family

PLEASE DO NOT POST ABSENCES OR CONCERNS IN GROUP CHATS
This must be done by email: admin@premiercheerelite.com.au

PCE Portal:

Everyone must create an account on our PCE Portal. This is where you can enrol in classes and where all payments take place. We are switching to a new payment system through Ezi-debit for 2025.

Questions/Concerns:

We encourage parents and athletes to please reach out to us if there are any concerns. We are here to help and are happy to arrange a meeting to discuss any issues.

Parent Code of Conduct:

- Parents must show support for all athletes and teams, even from other programs.
- Even if you disagree with the coach, speak positively about them
- Encourage your athlete to work through their struggles
- Ask questions instead of giving opinions or engaging in negative carpark gossip
- Be a positive influence at competitions



WHATS NEXT?

We kindly request your thorough review of all the information provided. Our dedication to our competition teams is unwavering, and we hold the principles of cheerleading as a team sport in the highest regard. In the spirit of fairness to your fellow team members, the club as a whole, and our devoted coaches, we ask that you accept a position only if you are fully committed to upholding our policies and meeting our expectations with absolute dedication.

TEAM SELECTIONS

How will the teams be selected?

Our tryouts are scheduled for December 15th, 2024. Team placements are determined by evaluating factors such as age, skill level, mental preparedness, and the level of commitment that aligns with your family's preferences. If you're interested in joining after this date, please don't hesitate to reach out to us.

We're here to assist you in finding the best fit for your cheerleading journey.



Team Placements and Accepting Your Position

1. Read and understand the ENTIRE cost and commitment packet
2. Attend **TRYOUTS** on Sunday **December 15th 2024**. Fill out the form [HERE](#) to let us know which session you will be attending.
3. After tryouts you will receive an email with your teams offered and a link to fill out the [2025 Acceptance Form](#) to accept your position on the team.
4. Download the "Dance Studio Pro-Portal" app for [IPHONE](#) or [ANDROID](#)
5. Click on "More" in bottom right corner.
6. Click 'Register for classes'
7. Select the tab regarding your team either "Cheerstars 2025" or "Allstars 2025"
8. Select your team name and tick the checkbox
9. Scroll to the bottom and press SUBMIT
10. Agree to the waivers by ticking all the checkboxes (there are multiple) the last one you will need to type your name and signature
11. Pay the registration fee
12. Join the corresponding private Facebook Groups: [Cheerstars 2025](#) or [Allstars 2025](#) and follow us on [Facebook](#)
13. Follow our private instagram account [pce.family](#) and our normal instagram account [premiercheerelite](#)
14. You can view your class schedule, personal calendar and google calendar on the app. Any extra classes that you book into for holiday camps and skill clinics can be viewed here so please make sure you are using the app to keep yourself organised.

Congratulations and Welcome to PCE!

