



PREMIER
CHEER ELITE

2024

Competition Information



CONTENTS

Page 3	Our Values
Page 4	Term Dates
Page 5	Competition Programs
Page 6	Fees
Page 7	Team Training Days and Times
Page 8	Financial Information Attendance Policy
Page 9	Training Attire Compulsory Lessons
Page 10	Competition Schedule
Page 11	Communication
Page 12	What's Next?



VALUES

Positivity. Commitment. Effort

At Premier Cheer Elite, we go beyond just teaching cheerleading skills; we instill invaluable life lessons that shape individuals into well-rounded, resilient, and accomplished individuals. Our commitment extends far beyond the practice mat.

When you become a part of Premier Cheer Elite, you join our tight-knit family. We're not just a team; we're a supportive community that's dedicated to nurturing qualities such as teamwork, resilience, unwavering dedication, effective time management, inspiring leadership, discipline, effective communication, strategic goal setting, and the art of building meaningful relationships.

We understand that these attributes transcend the boundaries of cheerleading, influencing success in academics, careers, and personal relationships. Our aim is to empower our athletes to not only excel in their athletic pursuits but to emerge as exceptional, well-rounded individuals. Our emphasis on family fosters trust, unity, and a sense of belonging, creating a nurturing environment where everyone can flourish.

At Premier Cheer Elite, we don't just teach cheerleading; we cultivate champions in life.





TERM DATES

Term 1	Monday 29th January to Sunday 14th April CLOSED EASTER LONG WEEKEND Friday 29th March - Monday 1st April
Autumn Holidays	Monday 15th April to Sunday 28th April
Term 2	Monday 29th April to Sunday 7th July CLOSED KING'S BIRTHDAY Monday June 10th
Winter Holidays	Monday 8th July to Sunday 21st July
Term 3	Monday 22nd July to Sunday 29th September
Spring Holidays	Monday 30th September to Sunday 13th October
Term 4	Monday 14th October to Sunday 22nd December CLOSED FOR NATIONALS Wednesday 4th- Wednesday 11th December
Summer Holidays	CLOSED HOLIDAYS Monday 23rd December to Sunday 5th January

Keep an eye on our socials for holiday camps, skill clinics and private lessons available in the holidays!



OUR PROGRAMS

We have 2 programs available. Choose your own pathway based on your commitment levels, goals and affordability.

CHEERSTARS (SEMI-COMPETITIVE)

Discover the ideal gateway to the world of competitive cheerleading. Immerse yourself in a dynamic and enjoyable learning experience where you'll master the foundational elements of cheer and tumbling. Our program is designed to cater to individuals of all ages and skill levels, providing a seamless transition towards our esteemed novice and elite teams.

Training	Once per week
Competitions	3 Competitions (2 in Sydney and 1 in Newcastle)
Club T-shirt	FREE
Training Attire	Optional
Comp Uniform	Compulsory
Shoes	Any plain black shoes

ALL STAR (COMPETITIVE)

Embark on the pinnacle of our program as athletes advance through levels 1-6, dedicated to achieving mastery in skill execution and complexity. This program demands unwavering attendance, wholehearted commitment, and absolute dedication to the values of PCE. Your placement on a team will be meticulously tailored to match your skill level accurately.

Training	Twice per week
Competitions	5 Competitions including AASCF Nationals on the Gold Coast
Club T-shirt	FREE
Training Attire	Optional
Comp Uniform	Compulsory
Shoes	Compulsory black flytes

PRIVATE LESSONS

There's simply no substitute for the personalized attention of one-on-one coaching. If you're truly committed to advancing your tumbling and stunting skills, we wholeheartedly endorse the benefits of a private lesson. Coach Rhi specializes in tumbling mastery, while Coach Kurt excels as an expert in partner stunting, and he also provides exceptional guidance in tumbling. Act swiftly to secure your spot, as our availability is extremely limited! Don't miss out on this exclusive opportunity for personalized coaching excellence. Contact us now to reserve your session.



FEES

Monthly Tuition

We offer an all-inclusive monthly payment system using Auto-Pay.

Due: Due on the first Monday of each month through our auto pay system.

Instalments: 11 months (February to December)

Includes: Registration Fee, Weekly tuition, Athlete Insurance, Competition Entry Fees, Music, Choreography, Coaches Fees, Club T-shirt.

Crossover Athletes: These are athletes that wish to cross into 2 teams. You must pay your initial team tuition costs plus the crossover fee per month.

Early Exit Fee for Comp Teams: There is a 1month early exit fee if an athlete leaves prior to the final December instalment. By signing up you are committing for the FULL YEAR to your teams.

Competition Travel Expenses: Families are responsible for their own travel arrangements and expenses to and from competitions. Sometimes accommodation is required if we have an early start to a competition.

Team	Tuition Per Month
Cheerstars	\$150
All-Star	\$280
Crossover	\$140

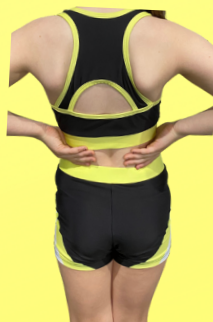
*Prices include 10% gst
** 1% card processing fee will apply

COMP UNIFORM (SAME AS 2023)	\$275
ALL TEAMS	\$150 due upon enrollment \$125 due 15th March

Cheer Shoes:

All-Star athletes must purchase BLACK FLYTES from cheerdirect.com.au (Roughly \$180)

Cheerstar athletes we highly recommend these shoes however they are not compulsory. The black canvas shoes with white sole from kmart will be suitable.



Training Gear: (optional)

Our training set (crop and shorts) are available to pre-order at the front desk for \$60

Comp Jerseys: We will fundraise for all new athletes to receive a jersey



TRAINING SCHEDULE

Tiny Tumble	4-5yrs	9-945am Saturdays	
Junior Tumble	5-9yrs	4-445pm Mondays	4-445pm Wednesdays
Senior Tumble	9-15yrs	645-730pm Mondays	615-7pm Wednesdays
Comp Teams	5-15yrs	Please email to enquire	

***Ages are based on the year you are turning in 2024
e.g athlete can be 3 turning 4 by the 31st December 2024 to enrol
in our Tiny Program.**





FINANCIAL TERMS

By joining Premier Cheer Elite Competition Teams you are committing to the FULL COMPETITION SEASON which is from February to December 2024. Tuition fees are charged on the 1st Monday of every month. Payments are non-refundable and not credited if an athlete is absent due to illness, holidays, or other commitments. If an athlete is out for longer than 2 weeks due to injury, then a doctor's certificate must be supplied, and the account may be credited pending approval.

Late payments are not acceptable and will result in your child being withdrawn from the team. Prices include 10% GST. A 1% card processing fee will apply to all payments.

All competition families MUST enrol in Auto-Pay for the full year. There is no postponing of payments allowed. If a payment is unsuccessful it must be paid within the week or your child will not be able to attend classes.

All private lessons are to be paid in cash upon arrival each week. \$40 for 30 minutes. Private lessons are booked by the term. Less than 24 hrs notice of non attendance requires full payment.

Please email admin@premiercheerelite.com.au if you have any questions.

ATTENDANCE

Competition Teams must adhere to a strict attendance policy. Cheerleading is a TEAM sport and if one person is absent it affects the whole team. Please plan ahead and make sure athletes arrive early to their practise times so they are not late. Carpooling is recommended if you live further away.

Trainings are closed. Only athletes are allowed on the floor. We encourage parents to drop off and pick up to avoid traffic congestion in the carpark. We find that athletes are more focused and able to concentrate without any distractions. We will take plenty of photos and videos and parents will be invited in occasionally towards comp season to watch routines.

Excused Absences

- Compulsory School Function
- Death in the Family
- Infectious illness/vomiting
- Serious injury

Please communicate ALL absences by email admin@premiercheerelite.com.au as early as possible.

An excessive amount of unexcused absences may result in the athlete being asked to leave our competition programs. Please book holidays during the school holiday periods.



TRAINING ATTIRE

Please wear either your training set or plain BLACK bike shorts/tights with a black crop top/singlet. Cheer shoes/flat soled shoes must be worn for all practises.

Hair must be tied up neatly and off the face. All jewellery/watches must be removed.

COMPULSORY LESSONS

All competitions are compulsory for all athletes. Please note that the two weeks leading up to any competitions are 'Black Out' weeks. This means that these trainings must not be missed under any circumstances. Non-attendance might mean withdrawal from the competition and for the remainder of the season.

Competition Running Orders are not released until 1-2 weeks prior to each competition. Please keep the whole weekend free including Friday.





2024 COMPETITIONS

	Cheercon State	AASCF State	Champions League	Cheerbrandz Nationals	Cheercon Nationals	AASCF Nationals (QLD)
Cheerstars	✓		✓		✓	
Allstars	✓	✓	✓	✓		✓

Cheercon State	9th-11th August	ICC Darling Harbour
AASCF State	13th-15th September	Sydney Olympic Park, Quay Centre
Champions League	25-27th October	Newcastle Entertainment Centre
Cheerbrandz Nationals	8th-10th November	Sydney Olympic Park, Showground
Cheercon Nationals	29th Nov-1st December	ICC Darling Harbour
AASCF Nationals	4th-9th December	Gold Coast Convention and Exhibition Centre, QUEENSLAND

Competition Running Orders are not released until 1-2 weeks prior to each competition. Please keep the whole weekend free including Friday. Athletes must arrive at competitions in full comp uniform with hair and makeup done. Athletes must stay to watch and support other PCE teams. Athletes will not be permitted to leave before their awards session.



COMMUNICATION

Who to contact:

If you need to clarify any information or have any questions please feel free to contact us via email: admin@premiercheerelite.com.au
Please do not approach staff during training times as we do have back to back classes.

Location:

Unit 11, 103 Stenhouse Drive, Cameron Park, NSW 2285

Private Facebook Group:

All competition families must join our private facebook group. This is a great way to communicate all information and stay up to date with what is going on. Please check this regularly and ensure your notifications are turned on. Search PCE Family in facebook groups. We also have a private instagram @pce.family

PCE Portal:

Everyone must create an account on our PCE Portal. This is where you can enrol in classes and where all payments take place.

Questions/Concerns:

We encourage parents and athletes to please reach out to us if there are any concerns. We are here to help and are happy to arrange a meeting to discuss any issues.

Parent Code of Conduct:

- Parents must show support for all athletes and teams, even from other programs.
- Even if you disagree with the coach, speak positively about them
- Encourage your athlete to work through their struggles
- Ask questions instead of giving opinions or engaging in negative carpark gossip
- Be a positive influence at competitions



WHATS NEXT?

We kindly request your thorough review of all the information provided. Our dedication to our competition teams is unwavering, and we hold the principles of cheerleading as a team sport in the highest regard. In the spirit of fairness to your fellow team members, the club as a whole, and our devoted coaches, we ask that you accept a position only if you are fully committed to upholding our policies and meeting our expectations with absolute dedication.

TEAM SELECTIONS

How will the teams be selected?

Our tryouts are scheduled for December 16th, 2023. Team placements are determined by evaluating factors such as age, skill level, mental preparedness, and the level of commitment that aligns with your family's preferences. If you're interested in joining after this date, please don't hesitate to reach out to us. We're here to assist you in finding the best fit for your cheerleading journey.

Team Placements and Accepting Your Position

1. Read and understand the ENTIRE cost and commitment packet
2. Attend **TRYOUTS** on **December 16th 2023**. Fill out the form [HERE](#) to let us know which session you will be attending.
2. After tryouts you will receive an email with your teams offered and a link to fill out the 2024 Acceptance Form to accept your position on the team.
3. Once we have received your acceptance form, we will send you the timetable and a list of the classes you need to enrol in.
4. Create an account on our [PCE Portal](#) and enrol in Auto Pay. Make sure all information is up to date. Enrol in the classes listed in your email.
5. Join our Facebook Group and follow us on our private instagram page @pce.family We will also create private messenger groups for each team.

Congratulations and Welcome to PCE!