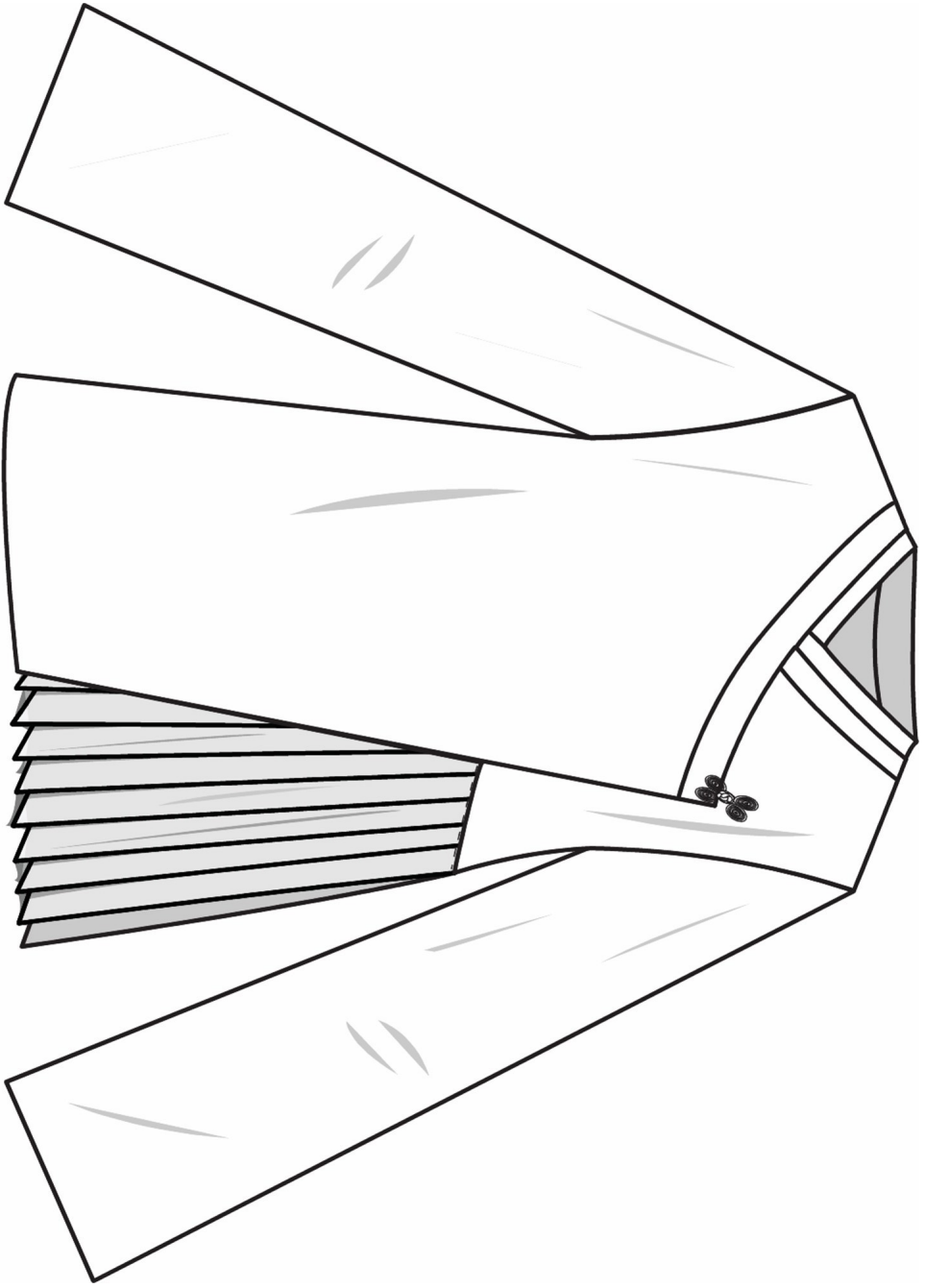
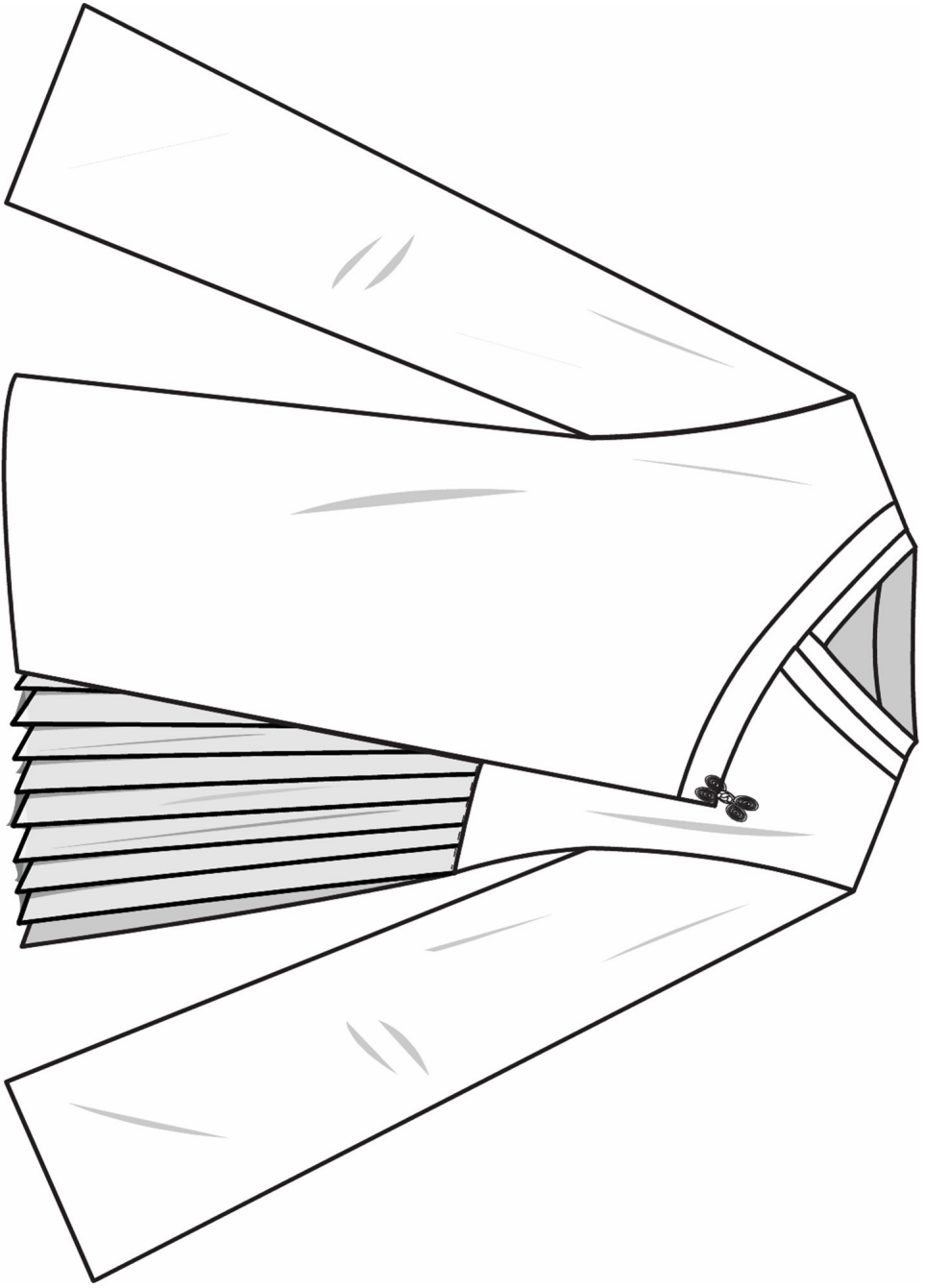


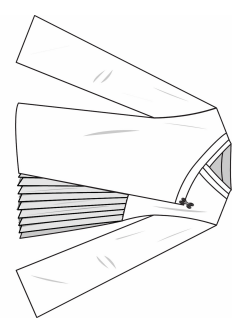
<b>Tech Pack Type</b>	Apparel	<b>Garment Wash/Treatment</b>		<b>Owner</b>	
<b>No of Item(s)</b>	1	<b>Tech-Pack Due</b>	1/28/2019	<b>Active</b>	Yes
<b>Style No</b>	1WT0172	<b>Status</b>	In Progress	<b>Created By</b>	student_SP19_13
<b>Description</b>	XPu Chinese Collar with pleats	<b>Design Contact</b>		<b>Created Date</b>	1/28/2019
<b>Style Category</b>	Woven Tops	<b>Tech Design Contact</b>		<b>Modified By</b>	student_SP19_13
<b>Size Range</b>	0 - 20	<b>Sourcing Contact</b>		<b>Modified Date</b>	1/28/2019
<b>Size Class</b>	Womens				



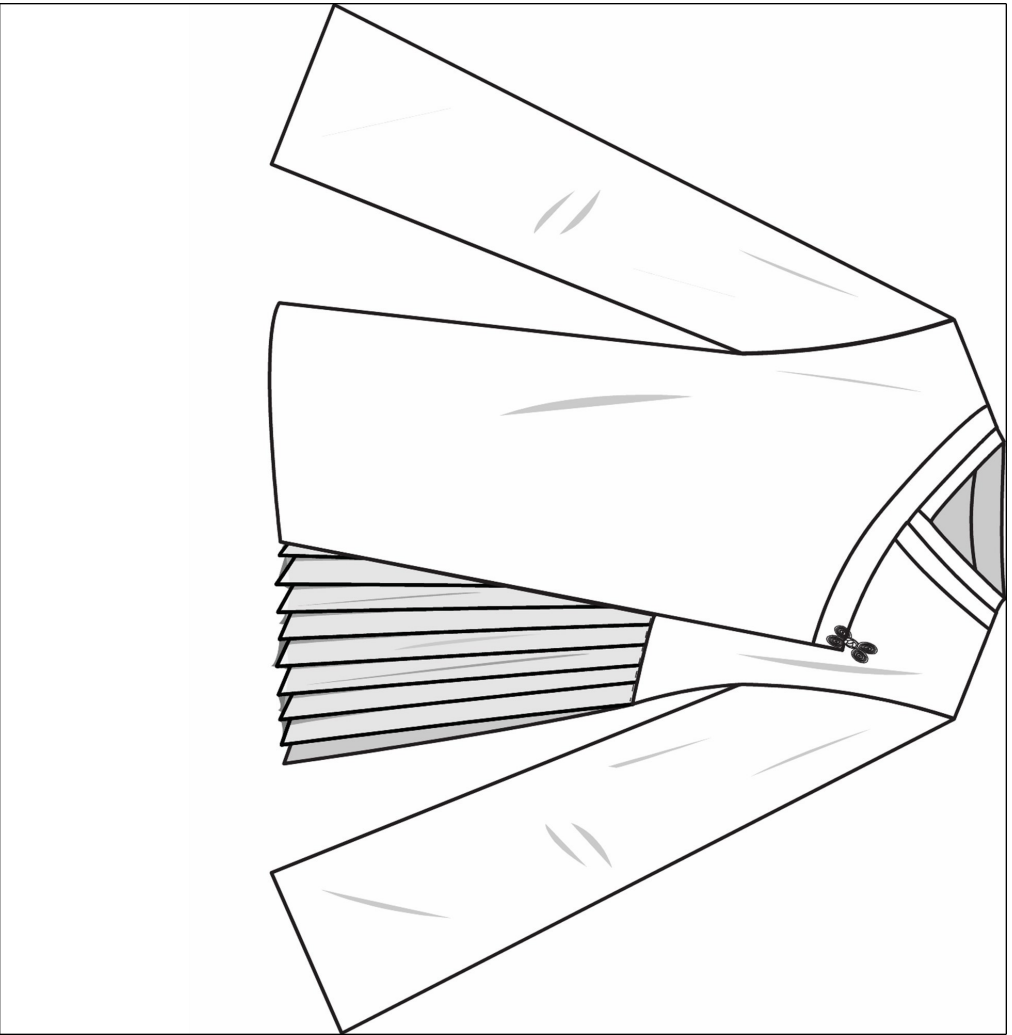
<b>Style Type</b>	Apparel	<b>Garment Wash/Treatment</b>		<b>Division</b>	CCAD APPAREL
<b>No of Item(s)</b>	1	<b>Tech-Pack Due</b>	1/28/2019	<b>Active</b>	Yes
<b>Style No</b>	1WT0172	<b>Status</b>	In Progress	<b>Created By</b>	student_SP19_13
<b>Description</b>	XPu Chinese Collar with pleats	<b>Design Contact</b>		<b>Created Date</b>	1/28/2019
<b>Style Category</b>	Woven Tops	<b>Tech Design Contact</b>		<b>Modified By</b>	student_SP19_13
<b>Size Range</b>	0 - 20	<b>Sourcing Contact</b>		<b>Modified Date</b>	1/28/2019
<b>Size Class</b>	Womens				



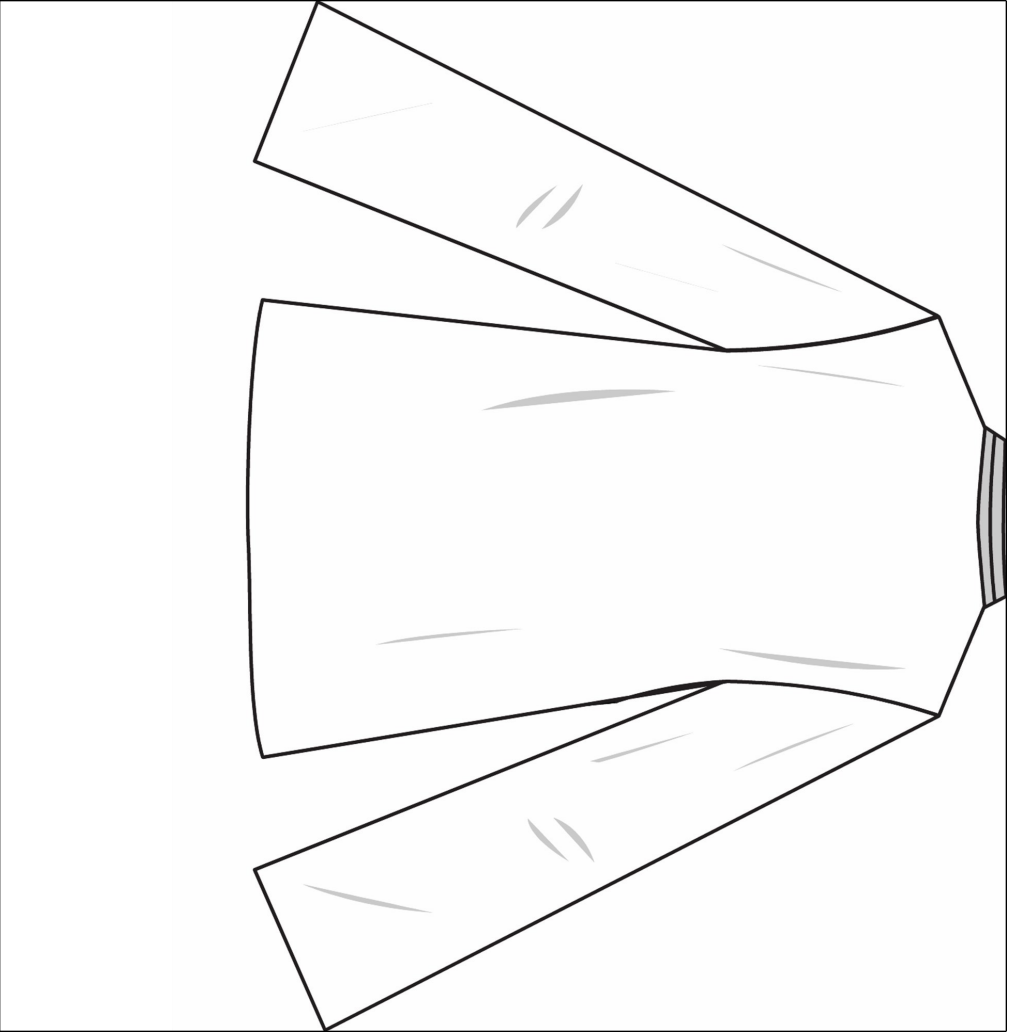
<b>Style Type</b>	Apparel	<b>Garment Wash/Treatment</b>	
<b>No of Item(s)</b>	1	<b>Tech-Pack Due</b>	1/28/2019
<b>Style No</b>	1WT0172	<b>Status</b>	In Progress
<b>Description</b>	X-Pu Chinese Collar with pleats	<b>Design Contact</b>	
<b>Style Category</b>	Woven Tops	<b>Tech Design Contact</b>	
<b>Size Range</b>	0 - 20	<b>Sourcing Contact</b>	
<b>Size Class</b>	Womens		



Front



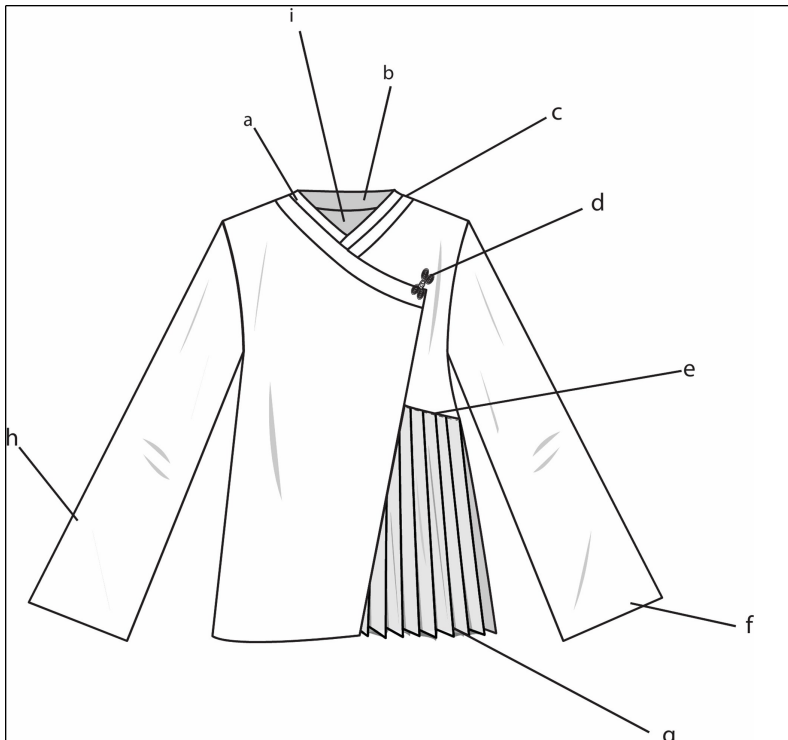
Back



<b>Division</b>	CCAD APPAREL
<b>Active</b>	Yes
<b>Created By</b>	student_SP19_13
<b>Created Date</b>	1/28/2019
<b>Modified By</b>	student_SP19_13
<b>Modified Date</b>	1/28/2019

<b>Style Type</b>	Apparel	<b>Garment Wash/Treatment</b>		<b>Division</b>	CCAD APPAREL
<b>No of Item(s)</b>	1	<b>Tech-Pack Due</b>	1/28/2019	<b>Active</b>	Yes
<b>Style No</b>	1WT0172	<b>Status</b>	In Progress	<b>Created By</b>	student_SP19_13
<b>Description</b>	XPu Chinese Collar with pleats	<b>Design Contact</b>		<b>Created Date</b>	1/28/2019
<b>Style Category</b>	Woven Tops	<b>Tech Design Contact</b>		<b>Modified By</b>	student_SP19_13
<b>Size Range</b>	0 - 20	<b>Sourcing Contact</b>		<b>Modified Date</b>	1/28/2019
<b>Size Class</b>	Womens				

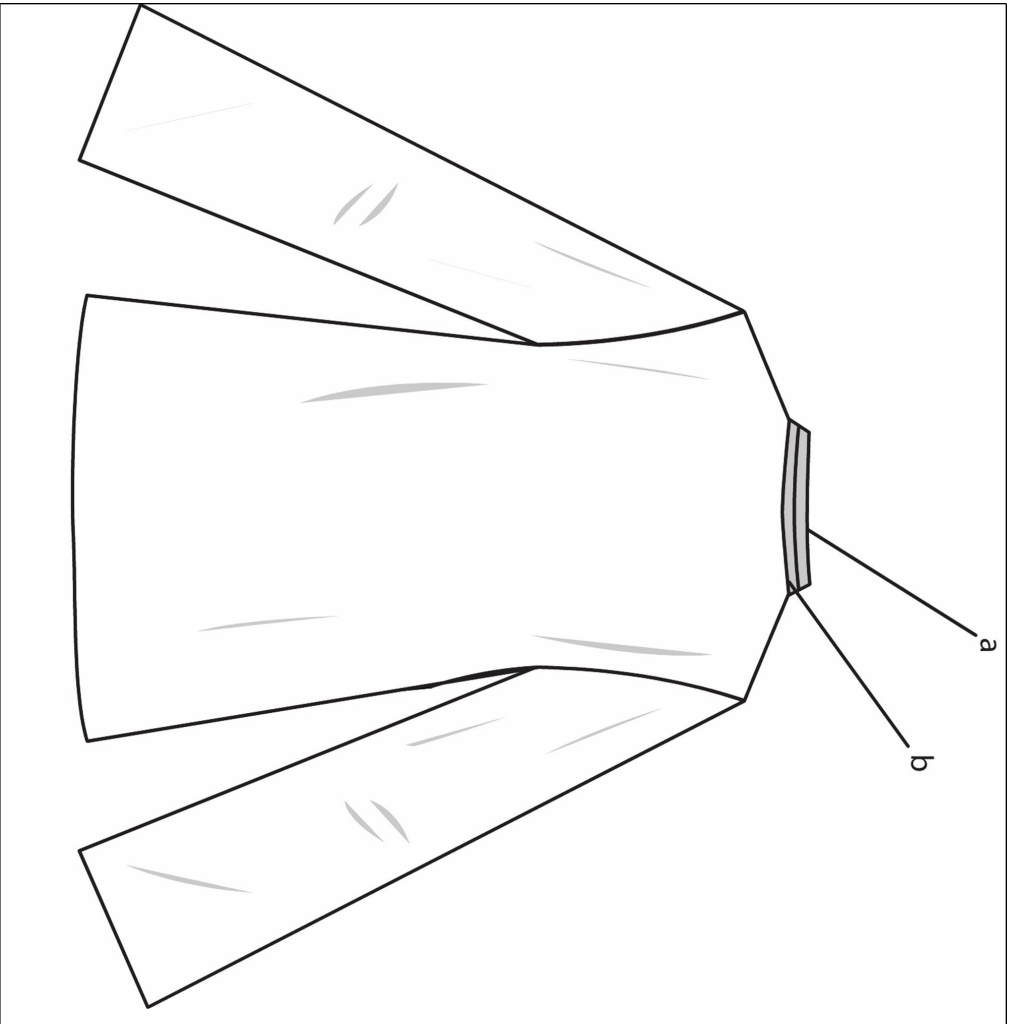
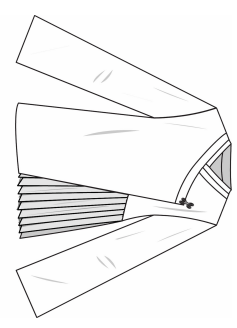
Modified By	Comments
-------------	----------



a.first layer collar height 2.5"  
 b.Only collar without lining,rest of garment fully lining.  
 c. second layer collar height 2"  
 d.Chinese knot button placed at 1" from side 4"down from the shoulder seam.  
 e.Pleats 3" down from side seam, clean finish w/ 1/8" 1N top stitch  
 f.Sleeve opening 10" W/ 1/8" 1N top stitch???  
 g.Pleats  
 h.inside pocket size:

XPu Chinese collar

<b>Style Type</b>	Apparel	<b>Garment Wash/Treatment</b>	
<b>No of Item(s)</b>	1	<b>Tech-Pack Due</b>	1/28/2019
<b>Style No</b>	1WT0172	<b>Status</b>	In Progress
<b>Description</b>	XPU Chinese Collar with pleats	<b>Design Contact</b>	
<b>Style Category</b>	Woven Tops	<b>Tech Design Contact</b>	
<b>Size Range</b>	0 - 20	<b>Sourcing Contact</b>	
<b>Size Class</b>	Womens		



- a. First layer collar height 2.5"
- b. Second layer collar height 2"

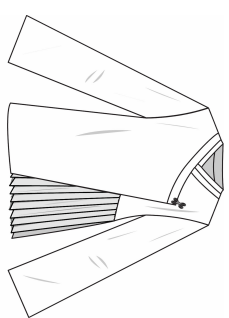
<b>Division</b>	CCAD APPAREL
<b>Active</b>	Yes
<b>Created By</b>	student_SP19_13
<b>Created Date</b>	1/28/2019
<b>Modified By</b>	student_SP19_13
<b>Modified Date</b>	1/28/2019

XPU Chinese collar back callout

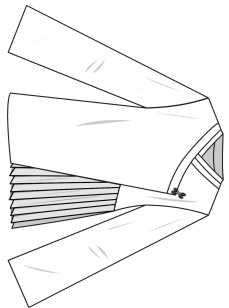
**Style Type** Apparel  
**No of Item(s)** 1  
**Style No** 1WT0172  
**Description** X-Pu Chinese Collar with pleats  
**Style Category** Woven Tops  
**Size Range** 0 - 20  
**Size Class** Womens

**Garment Wash/Treatment**  
**Tech-Pack Due** 1/28/2019  
**Status** In Progress  
**Design Contact**  
**Tech Design Contact**  
**Sourcing Contact**

**Division** CCAD APPAREL  
**Active** Yes  
**Created By** student\_SP19\_13  
**Created Date** 1/28/2019  
**Modified By** student\_SP19\_13  
**Modified Date** 1/28/2019



Feature Detail	Measurement	Stitch Type	Comments
hanger			pack with hanger
plastic bag			hanging plastic bag packing
Chinese Knot button			Satin fabric banded stripe to make the Chinese Knot button
tight stripe			inside the garment use the satin fabric banded stripe make the tight stripes.



**Style Type** Apparel  
**No of Item(s)** 1  
**Style No** 1WT01772  
**Description** X-Pu Chinese Collar with pleats  
**Style Category** Woven Tops  
**Size Range** 0 - 20  
**Size Class** Womens

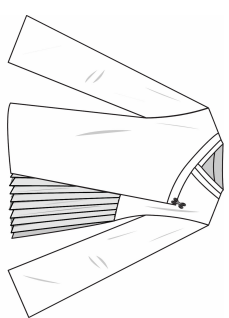
**Garment Wash/Treatment**  
**Tech-Pack Due** 1/28/2019  
**Status** In Progress  
**Design Contact**  
**Tech Design Contact**  
**Sourcing Contact**

**Division** CCAD APPAREL  
**Active** Yes  
**Created By** student\_SP19\_13  
**Created Date** 1/28/2019  
**Modified By** student\_SP19\_13  
**Modified Date** 1/28/2019

Material Description	Partner Ref #	Qty	Size/Treatment	Placement	11-0601 TPX Bright White	PANTONE 12-5201 TCX Icdle	PANTONE 19-4004 TCX Tap Shoe
WOV00029 Silk		0.000000			⊖	⊖	⊖
WOV00098 Silk Organza		0.000000			⊖	⊖	⊖

**Style Type** Apparel  
**No of Item(s)** 1  
**Style No** 1WT0172  
**Description** XPu Chinese Collar with pleats  
**Style Category** Woven Tops  
**Size Range** 0 - 20  
**Size Class** Womens

**Garment Wash/Treatment**  
**Tech-Pack Due** 1/28/2019  
**Status** In Progress  
**Design Contact**  
**Tech Design Contact**  
**Sourcing Contact**



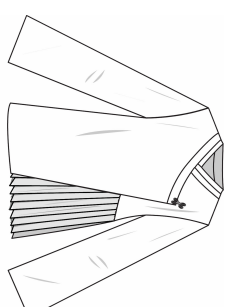
**Division** CCAD APPAREL  
**Active** Yes  
**Created By** student\_SP19\_13  
**Created Date** 1/28/2019  
**Modified By** student\_SP19\_13  
**Modified Date** 1/28/2019

Product Type	Woven Top	Size Class	Womens	Sample Size	20
Description	Woven Tops	Size Range	0 - 20	Method-System	Incremental - Imperial

POM	Description	+Tol	-Tol	Sample Size	
				Active Size	Yes
001	Center Back Length	0.6350	-0.6350	Grading	Yes
002A	Front Body Length - HPS	0.0000	0.0000	Measurement	49.2125
003	Across Back	0.0000	0.0000	Grading	0.0000
004	Across Chest	0.0000	0.0000	Measurement	0.0000
005	Bust Width	0.0000	0.0000	Grading	0.0000
006A	Waist Relaxed	0.0000	0.0000	Measurement	0.0000
007	Bottom Opening (sweep)	0.0000	0.0000	Grading	0.0000
010A	High Hip	0.6350	-0.6350	Measurement	28.5750
011	Armhole Circumference	0.0000	0.0000	Grading	0.0000
019A	Neck Width	0.0000	0.0000	Measurement	0.0000



**Style Type** Apparel  
**No of Item(s)** 1  
**Style No** 1WT0172  
**Description** XPu Chinese Collar with pleats  
**Style Category** Woven Tops  
**Size Range** 0 - 20  
**Size Class** Womens



**Garment Wash/Treatment**  
**Tech-Pack Due** 1/28/2019  
**Status** In Progress  
**Design Contact**  
**Tech Design Contact**  
**Sourcing Contact**

**Division** CCAD APPAREL  
**Active** Yes  
**Created By** student\_SP19\_13  
**Created Date** 1/28/2019  
**Modified By** student\_SP19\_13  
**Modified Date** 1/28/2019

<b>Product Type</b>	Woven Top	<b>Size Class</b>	Womens	<b>Sample Size</b>	20
<b>Description</b>	Woven Tops	<b>Size Range</b>	0 - 20	<b>Method-System</b>	Incremental - Imperial

POM	Description	+Tol	-Tol	Sample Size	
				Active Size	Yes
020	Front Neck Drop	0.0000	0.0000	Grading	Yes
				Measurement	0.0000
021	Back Neck Drop	0.0000	0.0000	Grading	0.0000
				Measurement	0.0000
022	Inside Pocket	0.0000	0.0000	Grading	0.0000
				Measurement	0.0000
023	pleat width	0.0000	0.0000	Grading	
				Measurement	0.0000
024	pleat length	0.0000	0.0000	Grading	
				Measurement	0.0000

**Modified By** \_\_\_\_\_ **Comments** \_\_\_\_\_