



WELCOME SPRING FROM BWGOK



The official newsletter of the Basket Weavers Guild of Oklahoma
Website: okbasketweaversguild.com Facebook: Basketweavers Guild of Oklahoma

NEXT MEETING: April 19th, 10AM, Bring a DISH!

**SPRING IS THE
TIME FOR
BASKETS!**



IN THIS EDITION:

EDITOR - LORRAINE WITZKE

Welcome to Spring!

Officers Update
for the New Year

Chuckwagon Festival

What Time is It?

CALENDAR - Check
the dates for
meetings

Information Pages for
Contacts, Guild
Meetings, Special
Events, Tips & Tricks

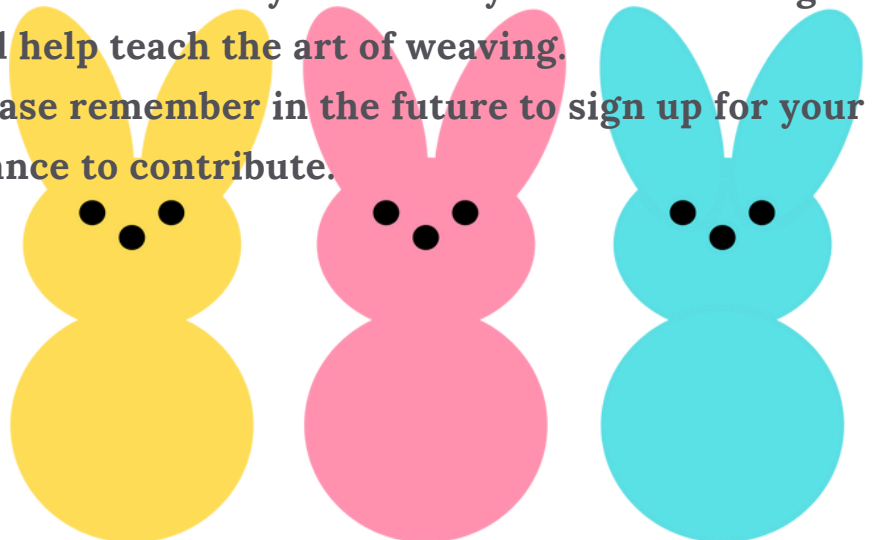
Meeting Minutes

Welcome to Spring Weavers!

The flowers are starting to bloom, the grass is getting greener and the wildflowers are ready to shine soon.

Next up on April 5th is the basket class for the museum. As part of our contract with National Cowboy and Western Heritage Museum is to hold public classes for their members to sign up and make a basket with our experienced members. This is a wonderful way to donate your time to the guild and help teach the art of weaving.

Please remember in the future to sign up for your chance to contribute.



OFFICERS UPDATE

THE LAST WORD



The BWGOK Weavers Weekend was a success this past year. Set your calendars for the 25th Anniversary of Weaver's Weekend, October 24, 25, 26, 2025. Instructors continue to send in proposals of compelling baskets that you will want to make. And this year we will also have a knife sharpener on Friday, October 24th. We will send all members a catalog link when we get all logistics in line.

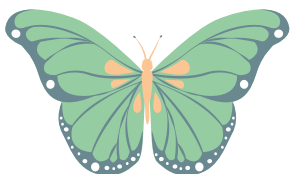
Hope to see you there.

We have a new line up of baskets to make this year at the guild meetings and the flyer went out last week (see below).

The newsletter is sent out at the first of the guild meeting month and we want you to watch for email bulletins with information about class sign ups and payments.

CHECK THE CALENDAR FOR DATES/TIMES of FUTURE GUILD MEETINGS.

All new classes, baskets projects at meetings must be paid in full by the posted deadlines. It is a lot of work to color and cut reed for these projects and our volunteers/teachers need the time and funds to cover costs ahead of time. We ask that you only request ONE kit per offering to weave at the meeting.



Spring is nature's way of saying, 'Let's get this party started!'



CHUCK WAGON FESTIVAL 2025 INFORMATION



WHO: NATIONAL COWBOY & WESTERN HERITAGE MUSEUM

WHAT: 34TH ANNUAL CHUCK WAGON FESTIVAL

WHEN: MEMORIAL DAY WEEKEND, MAY 24-25, 2025 - 10AM TO 4PM

WHERE: NATIONAL COWBOY & WESTERN HERITAGE MUSEUM, 1700 NE 63RD STREET, OKC

WHY: SHOWCASE TRADITIONALLY COOKED CHUCK WAGON AND NATIVE FARE.

CREATE A MEMORABLE AND ENJOYABLE EXPERIENCE FOR GUESTS OF ALL AGES
THROUGH ACTIVITIES AND ENTERTAINMENT RELATED TO WESTERN HISTORY AND CULTURE.

INCLUDES CHUCK WAGON AND INDIGENOUS FOOD SAMPLES,
MUSICAL AND STAGE ENTERTAINMENT, KIDS CRAFTS AND ACTIVITIES,
DEMONSTRATING ARTISTS, HISTORICAL RE-ENACTORS,
WESTERN DANCE AND MORE!

WE HOPE TO REACH 6000+ GUESTS OVER THE TWO DAYS! THE AUDIENCE CONSISTS OF
FAMILIES AND KIDS OF ALL AGES AND FOODIES ALIKE.

BACKGROUND CHECKS: ANYONE 18 AND OLDER MUST COMPLETE AN ANNUAL BACKGROUND CHECK.

IT IS DONE AT NO CHARGE TO THE PARTICIPANT AND COVERS THESE AREAS:

NATIONWIDE CRIMINAL DATABASE

MULTI-STATE SEX & VIOLENT OFFENDERS SEARCH

SSN VERIFICATION

ADDRESS LOCATOR

COPY THIS LINK TO COMPLETE THE BACKGROUND CHECK BY APRIL 14.

[HTTPS://WWW04.8F7.COM/4DACTION/WEBAPPORDERENTRYZCUSTOM/AMERICAN/8367](https://www04.8f7.com/4daction/webapporderentryzcustom/american/8367)

ON THE FIRST PAGE, SELECT "CHUCK WAGON FESTIVAL" FROM THE DEPARTMENT DROP DOWN MENU.

IF YOU NEED HELP PLEASE REACH OUT TO LORRAINE 918.706.3307

IF YOU HAVE ALREADY COMPLETED A BACKGROUND CHECK FOR THE MUSEUM THIS YEAR,
YOU DO NOT NEED TO COMPLETE ANOTHER.

IF YOU AREN'T SURE, PLEASE CALL OR EMAIL ME AND I CAN LOOK UP WHEN THE LAST TIME YOU
COMPLETED ONE.

*PLEASE PROVIDE A LIST OF NAMES PARTICIPATING **BY APRIL 28**. SO CALL OR EMAIL
LORRAINE WITZKE AT 918.706.3307 TO SIGN UP. WE NEED AT LEAST 5-6 VOLUNTEERS!

LORRAINE WITZKE - MYMAILBOX@OLP.NET

What Time Is It? - It's WEAVING TIME

If you have been wanting extra time to weave, I have a deal for you. Thanks to one of our guild members, Michelle Collins, we have a place to weave on the last Saturday of every month from 10-4. We are going to start with a 3 month trial starting May 31st, June 28 and July 26. We want to see if there is any interest in an extra weaving time. This class is not tied into the Oklahoma BasketWeavers Guild. It is organized by Janet Newman and is for people who want to get together for fellowship and weave. The plan is to have a \$10 donation for each person each session. This will pay for plates, cups, snacks, etc. I thought what is left over, we can make a donation to the church maybe once a quarter. We will need to decide how we want to do for lunch. Either everyone brings their own or potluck. I'm for potluck. For the first few meetings I would like people to let me know if they will be coming. Bring any unfinished projects you would like to work on. If you don't have anything to weave, I will have some kits available for you to purchase. If you have a pattern you would like to weave, bring the pattern and I can put a kit together for you to pick up next month. You would have to plan ahead to get the kit. I can also have any supplies you might need.

TIME & PLACE:

The last Saturday of every month from 10 to 4.
Wheatland Methodist Church
6931 Kleiner Avenue
Wheatland, OK 73097

DIRECTIONS:

Wheatland is directly south of OKC on Council Road. If taking I-40, you would get off on Council and go south about 5 miles to Ellis St. Then 2 blocks east to Keiner Ave. If coming from the south, take I44 to SW 104 (beside Will Rogers Airport). Drive west to Council Road. Turn north to Ellis St. turn right to Keiner.

WHAT TO BRING:

All your favorite weaving tools, water tub, spray bottle, towel, jacket if you get cold and something to weave on. Also, a \$10 donation for each visit. Something to share for lunch.

CONTACT:

Please text or email if you plan to attend. Direct any questions to Janet.
Janet Newman
405-812-4454 Leave a message if I don't answer.
Dnjin3227@sbcglobal.net

BWGOK CALENDAR

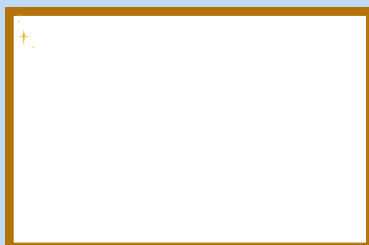
**APRIL BASKET
SEE NEXT PAGE**



SPECIAL EVENTS AND NOTICES

Please check the calendar for events, special dates and any changes in the guild meetings for this year. Since we use the museum for our meetings, sometimes we come up with conflicts and have to change a date so be sure to check the calendar.

GUILD MEETINGS 2025



**APRIL
19TH**

**JUNE
14TH**

**AUGUST
16TH**

**OCTOBER
11TH**

**DECEMBER
20TH**



Guidelines for Guild Project Participation

Since the volunteers at the guild are not in the basket business, supplies must be purchased out of state and shipped. For this reason, teachers of basket projects need a good amount of time to order supplies and cut kits which means that folks need to order their kits ASAP and after the newsletter announces the project is not always enough time.

These guidelines will help our teachers plan and prep for your baskets.

1. Lorraine, our newsletter lady, will send out the flyer that describes all of the projects for the year. You may use the flyer to see the dates/details of each project.
2. Payment is requested FOR THAT MONTH ONLY in advance due to the large number of members and the cost our teachers incur. You should sign up and pay for kits at the meeting prior to the designated project.
3. If you miss a meeting then it is your responsibility to sign-up and pay by mail in advance for that project's month by contacting the teacher and paying by DEADLINE.

Guild Projects for 2025



April 19 - Susan/Mary



Waves over Sea Grass

Size: 5.5 x 5.5 x 6" Skills: Beginner
(with variations) Twinning, Start/Stop Rows
Choice of color available. Cost: \$20

DEADLINE for PAYMENT IS March 31st
send to: Mary Lee, 4106 Stratford Ln, Norman, OK 73072
405.329.6253 for questions



June 14- Lorraine



Tissue Basket

Size: 5.5 x 5.5 x 6"

Skills: Beginner, Twinning, Start/Stop Rows

Cost: \$20

Send to: 9937 E. 124th St. S, Bixby, OK 74008

918.706.3307 - Lorraine Witzke

**DEADLINE for PAYMENT IS May 15th
if you did not pay at April guild meeting.**



(Actual basket color will be all natural reed, no color) Contact Marcia 405.823.5073

August 16 - Positive Tomorrows

**DEADLINE to sign up is August 1st - no cost to make but
you will be responsible to fill up with goodies/return in Oct..**

Ode to a Matchstick Basket
Size: 5x5x5 1/4"
Skills: Beginner/Intermediate
(with variations) Chase weave.
Choice of 2-3 color combinations

Cost: TBD

Call Sue: 405.550.9805

email: suescott0@gmail.com

October 11 - Nancy & Sue



**DEADLINE for PAYMENT IS Sept. 15th
if you did not pay at June guild meeting.**

To be announced in future email

December 20- Marcia



Website:

<https://www.okbasketweaversguild.com/Index.html>



**Basketweavers Guild of
Oklahoma**



President: Janet Newman
dnjn3227@sbcglobal.net
Membership Coordinator
members@okbasketweaversguild.com

Co-Vice President:
Mary Lee
leefam77@cox.net

Co-VP: Susan Steele
susannstitches@gmail.com

Secretary: Sue Scott
suescott0@gmail.com

Treasurer: Marcia Balleweg
mballeweg@yahoo.com

Editor: Lorraine Witzke
mymailbox@olp.net



***DON'T FORGET TO CHECK OUT THE
ATTACHED FILES***

Basketweaver's Guild of Oklahoma

Meeting Minutes

February 15, 2025

Meeting called to order at 12:00 by Janet Newman

Approximately 25 participants; one new member. Kathy from Ardmore brought Peggy

Treasurer's Report – Janet Newman for Marcia Balleweg

Balance as of September 30, 2024 - \$3978.44

Expenses

Total \$5949.29

Deposits:

Total \$6266.31

Balance as of January 31, 2025 \$4295.46

Workshops/Demos

Volunteers: Lorraine Witzke

We will need volunteers to assist in teaching basketweaving on the following dates:

March 15 – Beginner's class (museum class)

April 5 – Easter Basket (museum class)

May 24-25 - Chuck Wagon Festival

September ? – State Fair demonstration'

October 24, 25, 26 – Weaver's Weekend

Lorraine took signup sheets around the room...

Weaver's Weekend Update: Nancy Trait-Lira

Things are progressing according to the timeline. Instructors are sending in their proposals.

We will need to guild to be collecting things for the swag bags we give out, and any donations you might want to give for the raffle or silent auction.

Guidelines for guild projects: Mary Lee

In order for the members who teach the classes, it is necessary to tidy up the payment process. Lorraine will print up signup sheets for each class and have them ready by the previous guild meeting. So April's class taught by Mary Lee and Susan Steele will be collecting money today. Also the basket classes for the entire year will be published in the newsletter with the contact number for the teachers. That way the teachers will know how many kits they will need to make for the class and have money in hand to purchase materials. There will be a posted deadline for kits.

Guild Projects:

February 15: Handy Caddy – Janet Newman

April 19: Waves Over Seagrass – Mary Lee and Susan Steele

June 14: Basket taught by Marcia Ballaweg

August 16: Make Positive Tomorrows basket

October 11: Bring filled Positive Tomorrow basket back

Project: Sue Scott & Nancy Trait-Lira

December 20: Christmas Party

New Business:

Still need a librarian

Web designer is retiring so we need a new one.

Meeting adjourned at 12:30

Sjs