



OVER AND UNDER ACROSS OKLAHOMA

Volume 14 Issue 1

Dedicated to the preservation, promotion and education of the art of basketry.

January 2014

President's Letter

Dear Friends,

Merry Christmas and a very Happy New Year to all! I'm looking forward to a great 2014.

We have lots planned for the coming year starting with our annual booth at the Oklahoma Winter Quilt show. Join us January 9 - 11, 2014 at State Fair Park in the Cox Pavilion, 3001 General Pershing Blvd., Oklahoma City, OK 73107. The guild has a booth set up to promote basketweaving, our guild and members who volunteer to help out can even sell their baskets! Check out our Calendar of Events in the newsletter and online.

Work has started on our 15th Annual Weavers Weekend. Keep an eye on our website, www.okbasketweaversguild.com for updates. Currently, you will find the applications for instructors and vendors. Pass this on to anyone you think would like to apply.

If you haven't done so, don't forget to renew your membership dues so you can continue to receive the newsletter. January is the time to renew.

Marcia Balleweg

January Guild Meeting

We will not have an official guild meeting in January. Instead we encourage everyone to go to the Winter Quilt show and have fun shopping, looking for new things to do and shopping. Did I say shopping. Guess you know what I like to do at the quilt show. Look for more information inside the newsletter.

Note from the Editor:

Janet Newman

Christmas is past but not cleaned up yet. Hope everyone got to spend time with family and friends. Baking was fun and a challenge. I eat gluten free and my daughter eats totally grain free now. Believe it or not, we all got together for homemade pizza on Christmas Eve. We just had to be creative and each make our own crust. Then we played Christmas Bingo. Fun! Fun! Fun!

Speaking of fun its time to learn about GoDaddy, the new internet service provider the guild has to started using. As with all new things, there is a learning curve. I've looked at it and still don't know what it is all about but Marcia assures me that it is a great program to work with and emailing the newsletter will be easier. I will also be able to create the newsletter inside GoDaddy. For this first newsletter of the year though, I will stick to the old way of doing things. Is that like putting off my homework!

Speaking of homework, I realized that I needed to get all the new members from the retreat entered into the membership directory. I also looked at every registration form from the retreat and checked phone numbers, addresses and emails. If you change any formation during the year please let me know so the directory can stay up-to-date. That is one thing that is finished. If anyone tells you they are not getting their newsletter, have them contact me.

I'm excited to learn new things in 2014 and hope you are too. If you have anything you would like to share in the newsletter contact me at: dnjn3227@sbcglobal.net.

Janet

BWGOK meetings are held at the National Cowboy and Western Heritage Museum located near I-44 and NE 63rd Street in Oklahoma City. The meetings are held the second Saturday of every odd month at 10:00AM. Meetings generally start with the business meeting followed by a basket raffle, then lunch. Everyone brings a covered dish. After lunch we work on the scheduled project or whatever you bring to weave on. We are usually done by 2-3.

Basket Weavers Guild of Oklahoma

Minutes November 9, 2013

National Cowboy and Western Heritage Museum

Meeting was called to order at 10:04 by Marcia Balleweg, President.

September 14, 2013 minutes were approved as printed in the October Newsletter.

Old Business:

- Weavers Weekend: Deposit has been made to use the Heart of Oklahoma Expo Center, Shawnee, OK for October 23-25, 2014.

There were a total of 118 attendees at the retreat.

We celebrated our 15th year as a guild! The cake was delicious!

- Treasurer's Report:

Primary Account – Balance as of 9-31-2013	\$113.70
---	----------

Main Account – Balance as of 8-31-2013	\$12,980.78
--	-------------

Expenses:

Oklahoma Tax Commission	50.00
-------------------------	-------

Supplies	350.14
----------	--------

Quick Print	36.26
-------------	-------

Refund – Registration fee	70.00
---------------------------	-------

Insurance for Retreat	393.00
-----------------------	--------

Scholarship	85.00
-------------	-------

Catering	2,114.67
----------	----------

Rental for Quilt Show	175.00
-----------------------	--------

Deposit Expo Center 2014	302.50
--------------------------	--------

Web – Go Daddy	<u>109.62</u>
----------------	---------------

Total	\$4,072.03
-------	------------

Balance as of September 31, 2013	\$12,508.52
----------------------------------	-------------

Total of both Accounts	\$12,622.30
------------------------	-------------

- Programs/projects for guild meetings: Rena Vickery

January – No meeting – There was a motion, second and it passed that we would not meet at the National Cowboy and Western Heritage Museum. We will be going to the quilt show instead.

Quilt show OKC fairgrounds – Booth 104--contact Jo Ann Miller jam19482@aol.com or 405-863-8789 for volunteering/entrance pass

March – Beginner's Class - The new weaver class list will be taken from the signup sheets from the fair, Septemberfest, and the Quilt Show, plus the friends that you would like to invite. Please contact Jo Ann Miller if you are planning to bring someone to the class! Class project will be the napkin basket pattern. Any basket that you would like to weave is also appropriate. Details will be provided at a later date.

May – Nantucket rim – Mike Tickle has offered to teach the Nantucket Rim. The deal is that we bring a Nantucket basket ready to rim. Start early. The mold can be rented from Mike. Bring the woven basket to class May 10th to learn how to finishit.

July - Shirley Hill will be in charge. Information will follow.

September – Bring the Positive Tomorrow Baskets that have been filled with kitchen items. Janet Newman will lead a project to be determined.

November – Usually a Christmas project – this month doesn't have a designated project.

Newsletter – Janet Newman would like to have newsletter information about 6 weeks before the next meeting. Recipes – patterns, tricks & tips, pictures of your latest weaving adventure!

Christmas project – woven lidded glass container. Great pattern with good colors. Great gift idea!

Raffle winner – Basket was provided by Sybil Tibbets, won by Janet Newman.

Door Prize Drawing—Tools - provided by Mike Tickle, won by _____.

Kit – provided by Janet Newman, won by Jo Ann Miller.

January 2014 Meeting

Because of guild members working at the booth for the Oklahoma Winter Quilt Show we will not have a regular guild meeting. Instead everyone is encouraged to go to the quilt show and support our booth while enjoying the wonderful quilts and shopping all the vendors. The show is at the State Fair grounds at 10th and May Avenue and Reno Avenue. The show is in the Cox Pavilion on General Pershing Blvd. It is suggested to enter through Gate #5 off May Avenue for free parking.

Our booth number is 707. From the front doors go to your left. It is on the second to the last row. The show runs from January 9th to the 11th and from 10 am to 5 pm. Admission is \$10.



Calendar of Guild Projects

January: No guild meeting because of the Winter Quilt Show

March: Beginners Class lead by Jo Ann Miller

May: Nantucket Rim Class lead by Mike Tickle

July: 6" x 6" Basket with a new technique lead by Shirley Hill

August: Submit entries to the Oklahoma State Fair

September: Bring Positive Tomorrow's baskets back filled, Project to be determined, lead by Janet Newman

October: 24th-26th, 2014 Weavers Weekend Retreat

November: Election of officers

BWGOK Officers

President	Marcia Balleweg	Volunteer Positions	
Vice President	Rena Vickery	Librarian	Marcia Balleweg
Treasurer	Pat Horsey	Historian	Onita Lynch
Secretary	Jo Ann Miller	Membership	Janet Newman
Newsletter	Janet Newman	dnjn3227@sbcglobal.net	

Heads up about Positive Tomorrows Project

We will not be making the baskets for Positive Tomorrows in a guild meeting this year. Instead you can make your basket at home and bring it to the September meeting finished and filled.

Willow Weaving Made Easy

If you are of a mind to make your own plant holders for your garden, I found a website on how to weave them. There's only one problem with the website. Its in German (I think). At least I know it is a foreign language. I did realize I could right click on the web page. In the drop down menu that came up one of the choices is, "Translate with Bing." I clicked on that and the page translated into English. I had never done this before so keep it in mind if you want to see a foreign page in English.

This is a wonderful site about weaving with willow. One of the things to try is how to weave plant stakes with willow stick. The pictures are great.

You need about 11 long willow sticks. Use floral wire around the top to hold them together. About a foot from the bottom, weaver over/under for about 6 ". You need to weave several more section and secure the top with weaving.

I think I will try this with the bambo stakes you can buy at any garden center and use honeysuckle for the weaving. It might be a fun winter project.



There are also instructions on weaving willow baskets at Jon's Bushcraft. This young man is quite interesting. His website has many interesting articles and e-books on nature crafts. Get the men in your life to look at the site with you. You can learn to carve or make a canoe. Find out how to make a whistle or a tray out of birch bark. Learn how to make cording and a fish hook. Also weave a fish trap or coil a basket. This is a wonderful site with lots of information and how-to articles. Just be sure to do the translation as it is in another language.

<http://www.microsofttranslator.com/bv.aspx?from=&to=en&a=http%3A%2F%2Fwww.jonsbushcraft.com%2Fbasicbasket.htm>

There is a course on how to make a basket out of hay and elm bark. Bet none of you have tried weaving with hay.



2014 Oklahoma Weavers Weekend

From the desk of Shirley Hill

I am so excited about being Retreat Chairman. Learning about organizing the Retreat and everything it entails is mind boggling! If I'd known everything involved, I'm not sure I would have had the courage to volunteer. I know if I hit a snag, I have excellent friends to advise me.

Application letters are ready to go out and our Selection Committee will meet soon to select the baskets which will be available this year and I have every confidence that exciting baskets will be chosen for us. If you know of an instructor who would like an invitation to the Retreat, email me! The more variety, the better! Let's stretch our wings and learn new techniques.

The Retreat will be at the Shawnee Expo Center again, so we know we have a quality location and good food for lunch! Let me know if you have any suggestions or complaints from the last Retreat which we need to address. Be spreading the word to your weaver buddies about the Retreat and start planning on attending. I look forward to seeing all of you there!

Be sure to renew your guild membership for 2014 so you get the catalog and all the updates in the newsletters

Shirley Hill

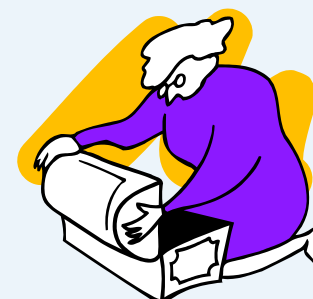
Email address: doug9471@sbcglobal.net

Door Prize Drawing



Several months ago we started a new project for the guild meetings. We have a door prize drawing. Each person there gets one ticket so everyone has the same chance of winning a prize. The prizes are items donated by guild members and don't have to be basket related. This has been a fun addition to the meetings but it needs the guild's

support. We need items donated. If you have something that is new or like new that you don't want it could be donated. Any basket related items would be great, extra tools, bases and handles would be great. We had a hand made rug donated and some hand tools still in the package. If you make jewelry, crochet or knit, or make any other kinds of items that would work also. Maybe you got a small gift certificate for Christmas to a restaurant you don't want to go to. That would be great to donate. It just needs to be something that people would use and be proud to receive. Bring items to the next guild meeting in March. You can also let Mike Tickle, mtickle@cox.net or Janet Newman, dnjn3227@sbcglobal.net, know if you have items to donate. Lets keep this activity going.



Charleston Palmetto Rose

The weaving of the Charleston palmetto rose dates back to the Civil War. Tradition holds that Southern ladies would give their true love a palmetto rose to keep them safe from harm as they rode into war. After pinning the rose to her Beau's lapel, she would tell him that the Palmetto Rose, like her love for him, was everlasting.

How to Make a Palmetto Rose

1. Strip four leaves from the spear ensuring that they remain connected at the base (the sturdiest part of the leaf). The strands should end approximately 12 inches from the base, which becomes the palmetto rose stem.
2. Lay the four leaves horizontally across both hands with your palms facing upward.
3. Take a leaf at one end and fold it at a 90-degree angle to the stem. Crease it with your fingers
4. Take the next leaf and fold it in the same direction at a 70-degree angle with the stem
5. Take the third leaf and fold it in the same direction at a 45-degree angle with the stem
6. Take the next leaf and fold it in the same direction at a 22-degree angle with the stem
7. Repeat steps 3-6, folding the leaves across the stem, maintaining 25 degrees of separation between the leaves throughout the flower. This gives the palmetto rose its circular shape.
8. Make sure to maintain a small hole in the center of the flower as you fold the leaves.
9. When you have about six inches left at the end of your leaves, flip your piece over and push the stem through the small hole in the center of the flower.
10. Hold the stem firmly in one hand, twisting the top of the flower with the other hand until you create the desired shape and form.
11. Wrap a rubber band around the stem, encompassing the ends of the leaves.

<http://www.charlestoncitypaper.com/charleston/video-how-to-make-a-palmetto-rose/Content?oid=3671490> In this website Adrian and his partner Shamar show you how to make the Charleston Palmetto Rose. There are written directions with pictures and a video. It would be fun to try to make these from day lily or oriental lily leaves.



Fronds from a palmetto tree



Explanation of May Project Which is a Nantucket RIM

This article is reprinted from the November 2013 newsletter.

At the May guild meeting, Mike Tickle will show us how to rim a Nantucket basket. Everyone is encouraged to have a 5" Nantucket basket ready to rim. Nantucket baskets are made on a mold. Most of us do not have access to the molds. Mike has a number of 5" molds. You can use one for a month with a \$10 deposit. When you bring the mold back to the next guild meeting you will get your \$10 back which can then be used to buy the handle and rim which is made of cherry. Mike will answer any questions you have about how to make a Nantucket.

As you can see, I got mine made and I have never made a Nantucket. Basically you cut 6" spokes from 1/4" cane. Trim the last inch to inch and a half down to about half of the width. They will not fit into the slot in the base so will have to be sanded a little on the underside. Do not wet the spokes. I used 41 spokes in my basket. Use the screw and plastic washer to attach the base to the mold. Insert the spokes and evenly space them. Take a very long piece of narrow cane and do a continuous weave until you reach the top of the mold. Do not do anything else with the basket except take it off the mold. Mike will tell us how to finish the basket in May.

The molds will be available at the January and March guild meetings so everyone will have a chance to get a basket made before the May guild meeting. If you take a mold home be sure to bring it back to the next meeting. Bring your basket in May and Mike will have everything to finish the rim and attach the handle. This will be a great experience and lots of fun. Plus you get one of those lovely Nantucket baskets for \$10.



Beginner's Class at the March Meeting

March is when the guild does a service project of teaching brand new weavers in our beginners class. Participants for the class will come from the fair, Septemberfest, and the Quilt Show. Friends, family and your students can also be invited. Please contact Jo Ann Miller if you are planning to bring someone to the class! It is important that we know by February 20th exactly who will be coming to the class so materials can be prepared. The project will once again be the napkin basket pattern. We need the help of all the guild members to work with the new weavers. It would be great if we could have one guild member with every one or two new weavers. Bring extra food items to the meeting so we have enough snacks for our guests. Lets all strive to make this a very positive experience for our new weavers and encourage them to become members.

Membership Directories

Printed membership directories will be available at the March meeting. If you have had any changes in your email, address or phone number please send that information to Janet Newman at dnjn3227@sncblobal.net.

If you have a jump drive that belongs to the guild please bring it to the March meeting and I will update the directory on it.

MEMBERSHIP RENEWAL TIME

January is the time to renew guild membership. If you did not renew when you registered for the retreat then you need to send in your \$15 renewal. There are three ways to do this. You can go on the guild web page and pay with Pay Pal. There is a membership form on the next page. You can cut it out and send it in. If you do not want to ruin your newsletter, you can go on the guild webpage and print it off. The web address is www.okbasketweaversguild.com.

Memberships that are not renew by the end of March will be dropped and will not receive any more newsletters. We don't want that to happen so please take care of your membership.



MEMBERSHIP APPLICATION

Today's Date _____

Name _____

Address _____

Home phone # _____ E-mail address _____

Birthday (month and day only) _____

New Member _____ Interested in teaching at guild meeting? _____

Renewal _____ Interested in serving on a committee? _____

Membership is renewed each calendar year in January and your \$15.00 dues may be mailed to:

Janet Newman
3401 Eagle Lane
Bethany, OK 73008
members@okbasketweaversguild.com

Do you have a friend we can send guild information to?

Name _____

Address _____

Home phone # _____ E-mail address _____

This spot could have been filled with a picture of you weaving, your favorite recipe or other item you send in to Janet Newman, dnjn3227@sbcglobal.net

Keeping your Coiled Basket Clean

Never wash baskets with soap and water! Fibers swell, then dry and shrink. The wrapping fibers shrink first while the coils are still swollen so the wrapping coils stretch and break. Natural oils are removed. Embedded soil is not removed, but creates a muddy solution that is absorbed into the fibers. Soaps and detergents dry out fibers and leave harmful residues.

Never use waxes or oils to treat baskets to keep them flexible as these can cause direct damage. They also attract and hold dust and soil and can change the dyes and natural colors of the basketry materials.

Baskets should be periodically cleaned of dust. The most efficient method is using a soft paintbrush to whisk dust toward the nozzle of a vacuum cleaner. Cover the nozzle with a scrap of nylon net or pantyhose and secure tightly with a rubber band. Set the vacuum on low power if available. Use care not to snag the basket with the paint brush and never use the vacuum directly on the basket. This method may not remove all soiling, but remember that a dirty basket is better than one deteriorating from water, soap, or other cleaning methods.

Display your beautiful baskets away from direct natural or artificial light, heaters or fans, and moisture. Be sure that display mounts do not have sharp edges that may scratch and cut fibers. Cut a piece of clear mylar or food storage plastic to place between basket and wood or plastic surfaces. Aquarium tubing can be used to make small rings to set them on. Visit museums to see how baskets are mounted to protect them. The Museum curatorial staff will be happy to answer questions and help you find safe solutions for your basket storage and displays.



BasketWeavers Guild
of Oklahoma
3401 Eagle Lane
Bethany, OK 73008

Phone (405)789-4540
dnjn3227@sbcglobal.net

Inside The October Issue:

President's Letter

Minutes

Calendar of Projects

Willow Weaving Made Easy

Door Prize Drawings

May Project

Membership

Editor's Note

January Meeting

Heads up on Positive Tomorrow

2014 Weaver's Weekend Update

Charleston Palmetto Rose

March Project