



PLEASE TAKE ME
I'M FREE

WHAT'S BREWING?

News from Alton Maltings & Harvest Church

May - Aug 2025



1.

04

TOGETHER WEEKEND

Harvest Church summer weekend.

2.

26

A JOURNEY OF SWEET BLESSINGS

From Sri Lanka to the UK with Rebekah Franklyn.

3.

32

COMMISSION

Who are commission?

CONTENT

1. ALTON MALTINGS 06 *Who's who?*

2. HARVEST CHURCH 08 *Get to know Harvest Church.*

3. DATES FOR THE DIARY 17 *Calendar dates for the months of May - August.*

4. INTEREST GROUPS 24 *What are your interests?*

5. MISSION FOCUS 30 *Meet Kate, Mary and Noella.*

AND MUCH MORE ...



What's Brewing?

Nature tells us that plants and wildlife generally thrive more together than apart.

The same is true for humans – when we are part of a community we thrive all the more. A church is just such an example – a diverse mix of people growing together in their relationship with God, distinctly different yet on the same journey and helping each other in it. Alton Maltings is a further expression of that – helping people from across our wider community gather together.

This edition has so much inside about being together. *Enjoy!*

TOGETHER WEEKEND

12 - 13 July 2025

Alton Maltings is the home of Harvest Church. We're a community united around the truth that Jesus is the hope of the world and has come to rescue each one of us.

To help Harvest Church grow in community life we're going to spend a weekend together on 12-13 July. We want to gather together to have fun and to enjoy God.



On Saturday morning we'll gather to worship God. We'll be joined by Adrian Holloway from Beacon Church, Camberley. Adrian speaks regularly all around the UK, and later this year is coming to share the gospel at one of our Christmas events.

We'll then share a picnic together in the July sunshine (not guaranteed) and spend the rest of the day in fun activities for all ages including "Camp Fire Worship". We're just hammering out more details and will share more soon!



On Sunday morning we'll gather again to worship God. We'll be joined by Tim Blaber from Hope Church, Winchester. Tim is an excellent Bible teacher and part of the UK Commission Leadership team. After a catered hog roast we'll spend the afternoon having more fun together.

The whole event is free. We want to be together for the weekend, having fun and enjoying God. Please sign up to help us in the organisation of the weekend using the QR code or online at harvest.churchsuite.com/events/pejq3hqr



Over the next few issues of What's Brewing, we'll be introducing some of the friendly faces who work behind the scenes here at Alton Maltings. Whether you're here for an event, a meeting, or just a coffee, these are the people who help create the warm and welcoming atmosphere we're known for. To kick things off, we're starting with two team members who each bring something unique to the building—let's get to know them a little better!



Nick Wright
Centre Assistant

"At the time of writing, I've been on staff at Alton Maltings for a grand total of 6,426 days, but who's counting? My connection with Alton Maltings actually stretches back to the 1990s, when a vision was received to breathe life into a derelict historical building and see it transformed into a beacon on a hill — both practically and spiritually.

These days, my role is to help ensure that everyone who enters finds a space that is welcoming, clean, and practical.

So far, I've stacked roughly 900,000 chairs, shifted around 137,000 tables, and carried out what feels like enough setup duties for it to qualify for the Furniture Olympics. But through it all, I've had the joy of watching a dream unfold, and a community enriched."



Tom Evans
Booking and
Communications Officer

"I've worked at Alton Maltings since March 2020, after spending 21 years at Treloar School and College. One of the things I enjoy most about my role is meeting new people and connecting with the many clients and visitors who come through our doors. I'm also part of Harvest Church, which meets here at Alton Maltings. It's great to be involved in both the practical and community sides of the building. I'm married to Fiona, a teacher, and we have two wonderful children; Anna (19) and Thomas (16)."

		
Dates	Ages	Theme
Mon -Tue 22-23 May	7-12 4-8	 
Mon-Tue 4-5 August Mon-Tue 4-5 August	7-12+ 4-8	
Mon-Tue 11-12 August Mon-Tue 11-12 August	7-12+ 4-8	
Mon-Tue 18-19 August Mon-Tue 18-19 August	7-12+ 4-8	

www.strictlyshowtime.co.uk
bookings@strictlyshowtime.co.uk

**Half Term and Summer
Holiday
Musical Theatre
Workshops
at Alton Maltings**

**9am-3.30pm
Only £56
for two days**

**Musical themed
workshops.
Songs, dances and drama.
Mini show at the end of day 2**

**Call Msg or Whatsapp
07943 884571**

**We take childcare
vouchers**

Sundays

with harvestchurch



We gather together every **Sunday at 10:30am** for worship, Bible teaching, and prayer. The Source are our fun and engaging groups for children and youth aged 0-14, which run during our adult meeting.

Our building is fully accessible for wheelchair users, we have amplification for hearing aid users, and we offer Makaton signing of our worship.

Guests are always welcome.

NEXT STEPS>>>

ALPHA

Alpha is an exciting way to explore the Christian faith. Each week we enjoy food together, watch a short film about a big faith question and discuss it in small groups. Everyone is welcome to come and find out more, and say what they think.

WELCOME EVENTS

Welcome Lunch - 1 June

We run welcome events throughout the year. These are an opportunity to meet some of our leadership team. Come for a chat and help us get to know you as you find out more about Harvest Church.

EXPLORING MEMBERSHIP

22 June

Membership in Harvest Church is about more than just attending—it's a heart commitment to our vision, values, and culture; Define who we are as a church. Join our course to find out more.
Sign up using the email below.

FIRST STEPS

Our First Steps course is aimed at people who are new to the Christian faith. Building on from Alpha these easy to follow weekly sessions introduce the essentials of Christian living.

BAPTISM

Exploring Baptism - 9 June

Baptism is an important step on your journey following Jesus. It's a public declaration of your commitment to live for Him. If you're a new Christian, or have not been baptised as a believer, this may be the next step for you.

LIFE and INTEREST GROUPS

New Flyer Available!

We want everyone who is part of Harvest Church to find friendship, grow in their love of God and their love for people. Our Life and Interest groups offer a great chance for people to do that. For Interest groups see pages 26-27, for Lifegroups pick up a flyer from Alton Maltings.

To find out more about any of the above, please speak to any of our leaders or:

Email : admin@harvestchurch.uk

Telephone : 01420 81950



THE SOURCE

Childrens and youth groups on a Sunday morning.



By Hannah Turner
Children and Families
Ministry Leader

As we wrap up an exciting Spring term in The Source, we want to take a moment to reflect on all the fun and learning we've experienced, while looking ahead to a summer full of growth and exploration!

This term, our children have been diving deep into the life of Jesus. From learning about His life and the stories He told to teaching people about God, the children have engaged with these stories through a variety of fun and hands-on activities.

They've whittled characters out of sticks to learn about Joseph's trade, tackled obstacle courses while reflecting on the temptations Jesus overcame, and even washed each other's feet in a fun, memorable activity based on the woman who washed Jesus's feet – replacing expensive perfume with bath bombs! These activities have helped our children join the threads together in understanding Jesus's life and His purpose. We've loved hearing from parents about the stories their children have shared at home, showing what they've been learning!

NEW GROUPS

We've been excited to see The Source continue to grow over the past few months, leading to the addition of two more groups:

NEW - Bubbles (0-2 years) – Lead: Amy Rowland
Splashers (2-4 years) – Lead: Nicki Spiegel
Rapids (Year R-Year 2) – Lead: Alison Steel
Flow (Year 3-Year 4) – Lead: Hannah Turner
Delta (Year 5-Year 7) – Lead: Mark Bentley
NEW - Harbour (Year 8-Year 9) – Leads: Jess and Andrew Dane

We are thrilled with the enthusiasm and energy these groups bring, and we're excited to see how they will continue to develop in the coming months.

COMMISSION KIDS ON TOUR

The Commission Kids on Tour event happening this summer is a great opportunity for our children in Key Stage 1 & 2 (school years 1-6) to be part of an exciting, action-packed day full of adventure, worship, and community.

Event Details:

When: 29th May (Half Term), 10:00 – 16:30

Where: Eastleigh

Who: Children in Key Stages 1 & 2 (School years 1-6)

Cost: £10 per child

To Book: Please go to commission.global/events/kids-on-tour

Why: The event is designed to take children out of the ordinary and into a space where God can move in extraordinary ways. It's a chance for them to experience being part of God's big family on a mission together.

We believe this event will be a powerful time for our children to grow in their faith, make lasting friendships, and have loads of fun in a safe, exciting environment.

GETTING INVOLVED WITH THE SOURCE

With the growing numbers in The Source, we are actively seeking new team members to help us continue this exciting ministry. If you have a heart for nurturing young faith, whether it's through crafts, storytelling, or simply being a role model, we would love for you to join us! If you're interested, please reach out to me at hannah.turner@harvestchurch.uk for more details.

NEWDAY YOUTH FESTIVAL

28th July - 2nd August 2025

By Tom Evans

It starts with a coach. Eighty plus teenagers and adults from Alton, Hook, Odiham and Fleet—‘Odiholton’ as they call themselves—jump on a coach with bags, snacks, and varying levels of enthusiasm. They’re headed to Newday, a Christian youth festival in a Norfolk field.



A setup team has gone ahead the day before, pitching tents and sorting out marquees and a communal kitchen. By Monday afternoon, it’s a village of canvas and cables, laughter and music. Somewhere between the café vans, fun fair rides, football pitches, and the giant big top, a rhythm forms: *breakfast, worship, talks, seminars, food, games, songs, meetings, more food, late-night chats.*

Newday isn’t just full of activities. There’s space to question, to reflect, to not have it all together. The talks deal with real life—mental health, identity, purpose—and no one’s forced to believe anything. But many do start asking bigger questions.

Back at the marquee, it’s card games, organised activities, snacks and conversations people didn’t know they needed. Strangers on Monday become friends by Saturday. Sometimes, someone prays for the first time. Sometimes, someone laughs so hard they nearly fall off their chair.



It’s not always neat, it may rain, someone might forget their phone, a tent might collapse. But in the mess and the moments, something happens that doesn’t always fit into words.



By the time you read this, Newday 2025 may be packed away. But for those who went, it lingers—in group chats, hoodie and merch wearing, half-formed thoughts.

A field full of questions, shared in community, can shape more than a summer.

And no one comes back quite the same...

Dates for next year 27 - 31 July 2026.



YLG meets every **Wednesday** evening (term time) at **Alton Maltings**, offering a welcoming space for youth in school years 10 to 13.



What to Expect:

7:30 pm – Dive into Discussions & Bible Studies

We kick off promptly at 7:30 pm with thought-provoking conversations, Bible studies, and the chance to explore a variety of meaningful topics together.

8:15–9:15 pm – Relax and Connect

The second half of the evening is all about fun and connection. Whether you're into group games, board games, console challenges, quizzes, or simply hanging out, there's something for everyone to enjoy.

Bonus Activities:

Beyond our regular sessions, we host exciting offsite events at least once every term, adding even more variety and adventure to our calendar.

YLG is all about building friendships, growing in faith, and having a great time. We'd love to see you there!

To find out more email tom.evans@harvestchurch.uk

Alton Maltings 20th Birthday

In 1997 Alton Maltings, part of the former brewery site which today includes Sainsburys and Maltings Close, was a forlorn run-down ruin of a building, a bleak reminder of Alton's past as a centre for brewing. It was purchased by Alton Evangelical Free Church now Harvest Church (then meeting in the Forrester's Hall in Church Street). The vision was simple to create a community space which would serve both the growing church and the town as a quality community space.

It was to take another 8 years and over £4 million for this vision to become a reality with Alton Maltings opening in Sept 2005.

Since the opening, the building has been used by hundreds of different community groups and other organisations for everything from small meetings for 2 or 3 people to events utilising the whole building. The building has adapted as life has changed, at times incorporating a Bookshop and Rafters Café as well as giving space for the Foodbank warehouse, but always sticking to our ethos of being a space for our local community to gather.

Between 3000-4000 people come through the Maltings every month.

Tom Evans, the centre's Bookings Officer, reflects on the privilege of running such a facility *"There's something special about watching the building come alive with activity, conversation, and creativity. Having a facility like this in the heart of Alton truly makes a difference – it brings people together, supports local initiatives, and creates a welcoming hub where all feel at home."*

As Alton Maltings celebrates 20 years of serving the community we would love to receive stories and pictures of the building from any time in its history – please drop them in to reception or email them to info@maltings.life.

harvestchurch



Prayer Week of Walks

18
May



25
MAY

PRAY | WALK | LISTEN



Join us during Prayer Week for a series of guided walks, each offering space to reflect, pray, and enjoy God's creation. Walks will vary in focus—from quiet contemplation to themes like education or community—and take place during the day and evening.

harvestchurch

One Church, Many Communities, Hundreds of Lives



Events Diary May - August 2025

Pull out and keep!

COMING UP...

May

5	Men's Meal	7pm	The Ivy House
6	Hour of Prayer	8pm	
11	Encounter Evening	7.30pm	
12	Ladies Meal	7pm	The Crown Inn
14	Leaders Summit	7.30pm	
18 - 25	Prayer Week of Walks	Various	
28	Commission Kids on Tour	10am	Eastleigh
29	Coffee Morning	10.30am	

June

1	Welcome Lunch	12.30pm	
2	Mens Meal	7pm	The Crown Inn
3	Hour of Prayer	8pm	
8	Whole Church Meeting	7.30pm	
9	Ladies Meal	7pm	The Crown Inn
18 - 20	Commission Leadership Conference	N/A	Bournemouth
22	Exploring Membership	10:30am	
26	Coffee Morning	10.30am	
29	Hearing from God	7.30pm	

*All events at Alton Maltings unless otherwise stated.
For more information please go to the online diary.*

harvestchurch.uk/diary

COMING UP...

July

1	Hour of Prayer	8pm	
7	Mens Meal	7pm	The Ivy House
9	Leaders Summit	7.30pm	
12 - 13	Together Weekend	N/A	Soldridge
14	Ladies Meal	7pm	The Crown Inn
24	Coffee Morning	10.30am	
27	ALL IN SUNDAY	10.30am	
28 - 2 Aug	Newday	N/A	Norfolk

August

3 - 31	ALL IN SUNDAY's	10.30am	
4	Mens Meal	7pm	The Ivy House
5	Hour of Prayer	8pm	
11	Ladies Meal	7pm	The Crown Inn
28	Coffee Morning	10.30am	

harvestchurch.uk/diary



What is my ChurchSuite?

Serving Groups Rotas Calendar Directory & more...



For more information
please email
admin@harvestchurch.uk.

New to Harvest Church?

We would love to get to know you...

CONNECT CARD

Helps us to serve you and connect you with our Harvest Church Family.



WELCOME EVENTS

Get to know us!

To find out more please visit
<https://harvestchurch.uk/welcome>





harvestchurch



WHO ARE WE?

Ordinary people, from all walks of life, ages and backgrounds who have met an extraordinary God and had our lives transformed through knowing His unconditional love and acceptance.

We are growing in our love for God and are learning to live life His way.

VISION

Our vision starts with knowing **who we are**, loved children of God and followers of Jesus, who are empowered by God's Holy Spirit, to share God's life-transforming love with others, in Alton and beyond.

CULTURE

Every group has a culture but it is not always clearly defined.

Our culture is shaped by our faith in God and our relationship with Him.

WE SEEK TO BE

GENUINE

Helping each other be really real.

COURAGEOUS

Making brave choices, even when we are fearful.

THANKFUL

Having an attitude of gratitude.

GENEROUS

See the best, seek the best and share of our best.

and

SAFE

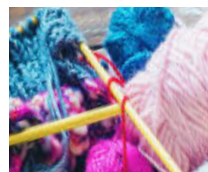
Looking out for and after all.

Interest Groups

Interest Groups are gatherings of like-minded people who have a passion for an activity, a hobby, a skill or developing their knowledge.

Interested?

You do not have to be part of Harvest Church to join an Interest Group. Please contact the group leader for more information.



Bible Reflection/Personal Study

Contact: Dave
david@burnhamsfamily.co.uk
Saturdays Weekly. 8.30am- 9.45am

A group that gather on Saturdays to discuss a Bible passage that they have all looked at and reflected on during the previous week.



Classic Cars

Contact: Chris
candsparis@aol.com
Saturdays Monthly. 9am-11am

Meet for breakfast and a chat at a local cafe. Bring your classic car, a friend or just your enthusiasm! Optional drive outs and visits to classic car shows. Plus a mid month curry night.



Cap Job Club

Contact: Alastair.
alastairsmith@capjobclubs.org
Tuesdays 10am- 12pm
Alton Maltings

A friendly place to get practical help and advice around employment. Discover your strengths, write a strong CV, develop all-important interview skills and re-build confidence.



Cap Money Coaching

Contact: Steve
stevehannington@capuk.org
Starting date TBC
Alton Maltings

Specifically designed to help people transform the way they approach money, build a successful budget, keep track of what they spend and to save regularly.



First Steps

Contact: Mark
mark1.rumsby@gmail.com
Starting date TBC
Alton Maltings

If you are interested in exploring your faith this is the ideal course for you. Run as 15 sessions aimed at introducing the essentials of Christian living.



Fresh Start

Contact: Mark
mark1.rumsby@gmail.com
Starting date 13 May 10.30-12pm
Alton Maltings

Fresh Start supports people who want to change a life-controlling habit. Working through a 9-week course to help tackle and break free from these dependencies.



Ladies Meal

Contact: Jan
kenandjan@mayl.co.uk
2nd Monday Monthly. 7pm
The Crown Hotel

Enjoy a relaxed evening with good food, great conversation, and a drink. A fantastic opportunity to invite your friends. No booking required, just turn up.



Lighthouse

Contact: Sue
Suebatstone.sb@gmail.com
2nd & 4th Wednesdays. 7.15pm-8.30pm
Alton Maltings

A group open to adults with special needs who would like to join with others, make new friends and learn about God's love.



Men's Meal

Contact: Chris
candsparis@aol.com
1st Monday Monthly. 7pm
The Ivy House

Enjoy good food, great conversations, and a drink. A fantastic opportunity to invite your mates. No booking required, just turn up.



One Way

Contact: Glenda or Terry
glendablandford@yahoo.co.uk
Wednesdays. 10am- 3pm
Alton Maltings

An opportunity for anyone looking for friendship and to grow in confidence. Enjoy games, puzzles, art or chat over a cuppa.



Sewing and Crafting

Contact: Lynn
Lynn_cg@btinternet.com
3rd Saturday Monthly. 10am-12.30pm
Alton Maltings

If you enjoy sewing or crafting, we would love to welcome you to our group. Try something new or bring along your own project or craft; together with, of course, tea and cake.



Walking Group

Contact: Debbie
debhaddow@gmail.com
Fridays. 2pm

Come and enjoy 3 or 5 mile walks. Great for getting to know others. Waterproofs and sturdy footwear essential . . . !



Yarn and Natter

Contact: Sarah
candsparis@aol.com
3rd Thursday Monthly. 2pm-4pm
Alton Maltings

A chance to gather with like-minded people, have a good chat, eat cake and do some knitting or crochet. You are welcome to attend as a one off and we are able to teach beginners too.

Alternatively if you would like to start a group please email -
connect@harvestchurch.uk

A Journey of Sweet Blessings: From Sri Lanka to the UK with Rebekah Franklyn

Hello, I'm Rebekah Franklyn, and I'm so grateful to share a little bit of my story with you. In February 2024, my family and I embarked on a new chapter, moving from Sri Lanka to the UK. Back home, I had the joy of running a baking business, creating cakes for weddings, birthdays, and local events. It was a blessing to share my passion with my community. Upon arriving in the UK, I felt a calling to continue growing my skills, especially in the beautiful art of sugarcraft. My signature chocolate cake has always been a way to share a little bit of sweetness, and I've continued to bake for friends and family here, finding joy in each creation. I've also been participating in baking competitions, seeing them as opportunities to learn and share the gifts God has given me.

My journey into sugar art began in 2023, a natural extension of my love for crafting and baking. The delicate process of creating sugar flowers felt like a way to express the beauty of God's creation in a tangible way. Last year was a testament to God's grace. My first time at Cake International resulted in a bronze and a third-place award, which was truly humbling. This led to the D'licious Magazine Awards, where I received the Beginner Sugar Art of the Year 2024. I also participated in the International Salon Culinaire 2025, receiving a bronze and two merits for my sugar flowers.

These competitions have been more than just contests; they've been opportunities for growth and learning, preparing me for the next step in my journey. I believe God has opened these doors, and I'm excited to see how He will use my talents to bless others here in the UK. My goal is to bring my unique style and expertise to this community, sharing a little bit of the sweetness and love I've experienced along the way. I'm thankful for the support of my family, and for the guidance of our loving Father, who directs our paths. I pray that my journey can be a testament to His faithfulness.



christians
against
poverty



Lifting the weight of debt

Free debt advice and personal
support in your community.

Whatever the situation you are facing, there is hope.
As a charity we offer a completely free service to help
lift the weight of debt from your shoulders.



Book your **FREE** appointment.

Call free on: 0800 328 0006

capdebthelp.org

📞 CAPuk 📧 CAPuk_org 📺 CAPukorg

always hope.

Charity Registered No: 1097217 (England & Wales), SC038776 (Scotland). CAP is authorised and regulated by the Financial Conduct

christians
against
poverty



CAP JOB CLUBS

With you on your job
seeking journey

Join a friendly community
and gain skills to step
confidently into
employment.

Alton Maltings,
Maltings Close
GU34 1DT



Book your **FREE** place, contact: 07871 635934 alastairsmith@capjobclubs.org

capjobclubs.org

📞 CAPuk 📧 CAPuk_org 📺 CAPukorg

always hope.

Charity Registered No: 1097217 (England & Wales), SC038776 (Scotland). CAP is authorised and regulated by the Financial Conduct

JONO HALL

“Hi, I’m Jono—though you might know me better as ‘Marie’s son!’”

Jono has lived in Alton since he was two and grew up as part of Harvest Church. After finishing A-levels in Maths, Biology, and Chemistry, he moved away in 2021 to study Genetics at the University of York.

“Don’t ask me why I chose Genetics—I’m still figuring that out,” he laughs.

Some of his fondest memories growing up come from his time in church youth groups, especially the midweek Youth Life Group (YLG), which he joined in Year 9.

“For six months, I brought along something I’d baked every Tuesday for my Duke of Edinburgh Award. The group would shout ‘IT’S STILL WARM!’ and descend on it like a pack of wolves.”

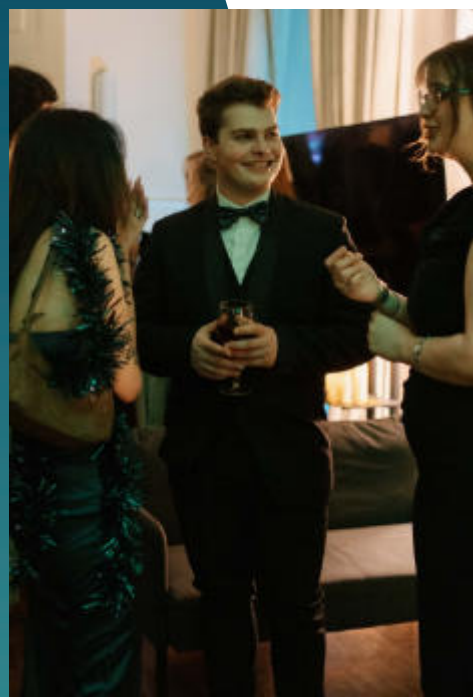
But leaving for university was a turning point. Like many young people, Jono found it hard to settle into a new church or community, and over time, his faith took a back seat.



“I drifted. I wasn’t making the best choices or surrounding myself with the best people.”

Things changed in 2024, when Tom (Harvest Church youth leader) invited him to come along to Newday, a large summer event for teenagers exploring Christian faith.

“It was a real turning point. I came back feeling refreshed and encouraged, and decided to get baptised. That moment really marked a shift—I started to feel that youth work was something I was meant to do.”



Now coming back to Alton for the year in June 2025, Jono is taking on the role of youth intern with Harvest Church.

He’s helping to lead YLG and connect with other local groups like The King’s Arms, alongside taking part in leadership training and mentoring as part of the Commission Intern Year.

An intern year is a mix of practical experience and theological study, with a focus on personal growth and spiritual development.

“YLG was a safe and welcoming space for me as a teenager, and I want to help create that same space for others.”

Jono’s heart is to help young people feel valued, heard, and at home; whether they would call themselves part of a church or not. And if there’s cake involved, all the better.



Mission Focus - Uganda

Update from Kate Tolhurst



This role has been both exciting and challenging, especially as we continue to expand our work.

At Ekisa, it feels like we are in limbo land as we are awaiting the completion of our new school building, so we've started a mini version of school for our residential students and some vulnerable community children, despite limited space and classes meeting in tents, with staff also doing home visits.

In personal news, Noella my younger daughter now has her passport and we are just about to apply for a visitor's visa for our trip to the UK in June. Since we left New Hope, we have rented 4 different homes but in August 2023 we were able to purchase a plot of land and with two thirds of the money raised, we are in a position to start building our new home! *Thank you Harvest Church for your generous gift towards this.*

Mary is doing well and has a busy social life. She recently enjoyed a youth group discipleship weekend and is currently having a Narnia movie marathon with friends at school. She's switching to online iGCSEs next year but will continue with youth group, Afro-dance, volleyball, and voice lessons. Noella continues to amaze us with new words and longer sentences. She loves making friends wherever she goes and has started dance lessons, though swimming remains her favourite activity!

I'll end by sharing what God has been revealing to me recently: **If we fully surrender our lives to Him and let Him lead, we will find rest for our souls.**

The alternative, which I often do, is to run ahead of Him, telling him what I think I need, which leads to exhaustion and stress.

May we choose to take His yoke upon us, learning from Him as he is gentle and humble in heart. He made us and created us and loves us more than we can imagine.



If you'd like to learn more about Ekisa Ministries or receive my personal updates, please visit **www.ekisa.org** or email me at **katetollie@hotmail.co.uk**.

Thank you for your continued prayers and support, and for walking alongside us as we help re-write the story of disability here in Uganda.

With love,

Kate, Noella and Mary





Commission

Andrew Lawrence Team Leader, Harvest Church

As a church, we are committed to the mission God has called us to: reaching our community with the love of Jesus, being faithful stewards of the resources and opportunities He has given us. We are part of a much bigger family; a global family of churches that share the same values, vision, and calling.

That family is **Commission**.

Commission is a family of churches united by a shared passion for Jesus and his mission. Our vision is to see thousands of lives transformed through hundreds of churches in tens of nations. We are built on shared values and a common desire to see the Kingdom of God advance in our local communities and across the globe. At present, there are around 50 churches in the UK, and another 250 churches spread across 9 different nations. A significant portion of these churches are in India, where God is doing amazing things through His church.

Vinu Paul heads up the Commission leadership team and is based in Mumbai, India, where he serves as the lead pastor of Living Hope Church. He and his wife, Julie, are passionate about preaching the gospel, planting churches, and raising leaders.

While each church within the Commission family is autonomous, we choose to be part of this family because we recognise the strength and support that comes from working together. As the Bible says in Ecclesiastes 4:9, ***"Two are better than one, because they have a good return for their labour."***

We know that we can accomplish far more together than we could alone.

Being part of Commission we are not only able to receive support, but we are also able to give back and contribute to the growth of other churches around the world. Here are just a few of the ways we benefit from being part of this family of churches:

1. **Training and Identifying New Leaders**
Whether it's through events, conferences, or direct mentoring, Commission provides a wealth of resources to help us raise up the next generation of church leaders.
2. **Support, Advice, and Encouragement**
Every church goes through seasons of growth and challenge. Being part of Commission means that we have access to a family of churches that can offer advice, encouragement, and practical

support. When we face difficult decisions or feel discouraged, we know that there are brothers and sisters in the faith who are praying for us and offering their wisdom

3. **Help with Biblical worldview**
Commission helps us to understand and apply Scripture in every area of life. This is vital in helping us stay grounded in God's word and ensure that our church's mission aligns with God's purposes.
4. **Special Events and Training**
Commission hosts a number of opportunities throughout the year, that equip us to fulfil our calling. These events are a valuable opportunity to meet with other churches, share stories, and learn from each other.

Why Does This Matter?

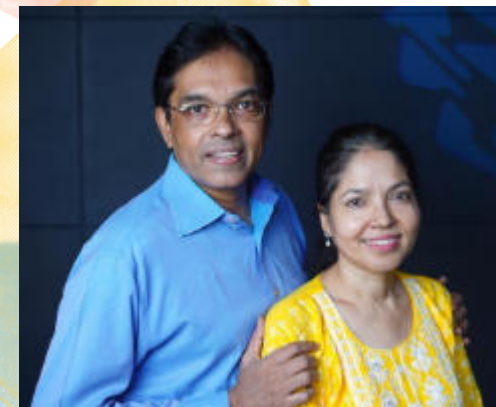
In a world that is increasingly individualistic, it's important to remember that God has called us to be part of something bigger. The church isn't just a local gathering of people, it is a global family united by a common mission. Being part of Commission helps us remain connected to that broader family and reminds us that we are not alone in this work.

Together, we are more than we are apart. Together, we can accomplish more for God's Kingdom. And together, we can make a real difference in the world.

www.commission.global

Sending and Supporting Others

As much as we receive from Commission, we also give. We believe in the principle of releasing and sending our leaders to help other churches. Whether it's sending leaders on mission trips, or providing support through prayer and financial giving, we want to contribute to the growth of the global church. As an example I work closely with churches in Canada and America and will be visiting them in May.



Vinu and Julie Paul

**ALL
IN SUNDAYS**

**JULY
27 UNTIL
AUGUST
31ST**

**THEMED
MEETINGS**

**WORSHIP, TALKS,
ACTIVITIES, AND
GAMES FOR ALL**

**GREAT OPPORTUNITIES
TO INVITE FRIENDS AND
FAMILIES**

altonmaltings 

refresh

SAVE 10p
when you
*BYO

**LATTE,
CAPPUCCINO,**
other Coffee, Hot Chocolate
and Tea, available!

Only £2



*For illustration purposes only.

Now available in our 'Refresh' area next to reception.

*Bring your own cup and only pay £1.90.

Fresh Milk available in fridge.



THINKING OUTSIDE THE BOX!

HERE ARE SOME UNIQUE ROOM HIRE IDEAS
YOU MIGHT NOT HAVE CONSIDERED:



Film Screening Nights

Use our auditorium & projectors for movie marathons!



Podcast & Content Creation

Private rooms perfect for recording sessions



Pop-up Learning Labs

Run your own masterclass or short course



Immersive Theatre Shows

Make use of our stages & unique settings



 Book a space that brings your vision to life!

#ThinkOutsideTheBox #CreativeVenues #AltonEvents

BOOK NOW!

altonmaltings

maltings.life

01420 81950

