

KITCHEN CABINETS



431-866-6868
info@velocitybuilding.ca
18-1391 St James St,
Winnipeg, MB R3H 0Z1



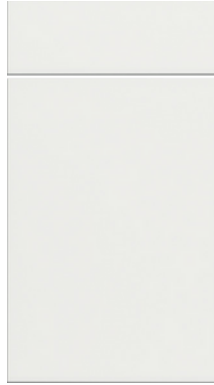
Door Profiles	3
Door Profile Inspirations	4
Cabinet Construction	10
Cabinet Identification	11
Order Codes	12
Wall Cabinets	13
Base Cabinets	15
Vanity Cabinets	17
Oven & Pantry Cabinets	18
Accessories	19
Order Process	20
Kitchen Design Guide	21

Slab Door

Full overlay
MDF core
PET finish



Matte Grey
(MG)



Matte White
(MW)



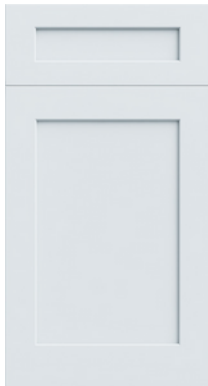
Gloss Grey
(GG)



Gloss White
(GW)

Shaker Door

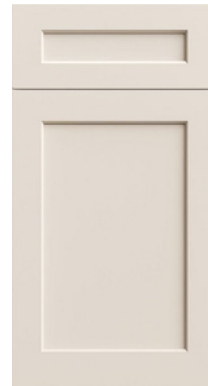
Solid color
Full overlay
MDF center piece
Solid wood frame



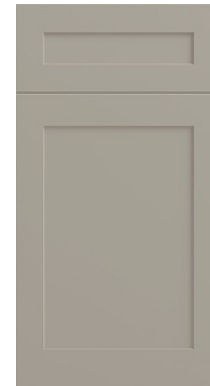
Light Grey
(LG)



Shaker White
(WSW)



Light Beige
(LB)



Dark Beige
(DB)



Shaker Green
(DGN)

Shaker Door

Wood grain
Full overlay
MDF center piece
Solid wood frame



Dark Espresso
(DEO)

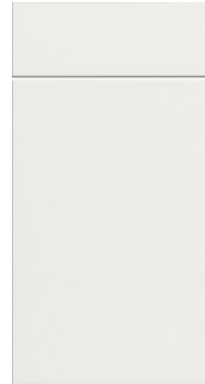


Light Wood Grain
(LWG)



Matte White (MW)

Matte White presents a clean and minimalist look, offering a bright and modern backdrop that enhances the openness in the kitchen. Its smooth and non reflective finish softens light reflections and adds a sophisticated feel.



Matte Grey (MG)

Matte Grey is a matte charcoal grey, bordering on black with a warm undertone. Its matte finish minimizes reflections and fingerprints. Perfect for modern or transitional spaces seeking depth without overpowering the design.





Glossy White (GW)

Glossy White appears smooth and glassy, catching and bouncing light to create a bright, spacious feel. Glossy white surface amplifies both natural and artificial lights. While neutral, the gloss finish makes the design pop.



Glossy Grey (GG)

Glossy Grey is a cool toned dark grey. The glossy surface resembles lacquer or polished metal, giving a high tech and clean aesthetic. Great with modern designs with chrome or stainless steel accents.



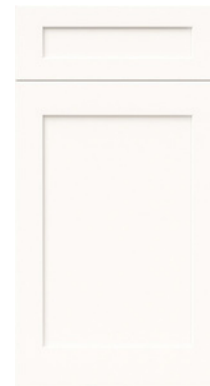
☎ 431-866-6868
 ✉ info@velocitybuilding.ca
 📍 18-1391 St James St,
 Winnipeg, MB R3H 0Z1

Slab Doors
 Glossy



Light Grey (LG)

Light grey brings a calm feel. It carries the softness of grey while reflecting subtle hints of blue, which can shift slightly depending on the lighting. This tone works beautifully in modern, coastal or Scandinavian interiors.



Shaker White (WSW)

Shaker white features a crisp, clean finish that enhances both natural light and a sense of spaciousness in any room. It pairs effortlessly with a variety of styles- from classic farmhouse to sleek modern.

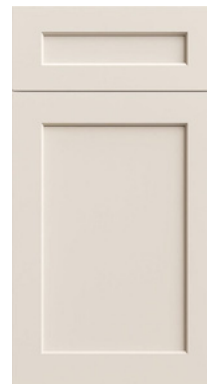


Shaker Green (DGN)

Shaker green features a soft sage green finish that brings a calming touch to any space. It offers a timeless yet contemporary look that complements both classic and modern interiors.

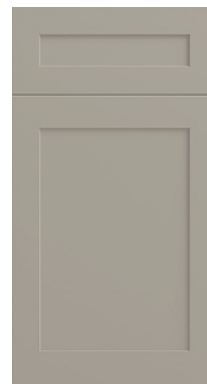
☎ 431-866-6868
✉ info@velocitybuilding.ca
📍 18-1391 St James St,
Winnipeg, MB R3H 0Z1

Shaker
Solid Color



Light Beige (LB)

Light Beige enhances natural light and creates an airy and inviting atmosphere in kitchens. This subtle shade also provides a timeless backdrop, allowing for flexibility in accent colors and décor choices.



Dark Beige (DB)

Dark Beige beautifully balances warm beige and cool grey tones, offering a soft refined elegance. This shade brings warmth without overwhelming, making it versatile across classic, transitional, and minimalist styles.



Dark Espresso (DEO)

Dark Espresso features a rich espresso brown tone with subtle black undertones, offering a deep and luxurious appearance. This color pairs beautifully with brushed silver or matte black hardware for a grounded statement.



Light Wood Grain (LWG)

Light Wood Grain features a warm, muted grayish brown tone with natural wood grain visible, giving it a soft and organic character. The color strikes a refined balance between rustic and contemporary styles.

Frameless Cabinet

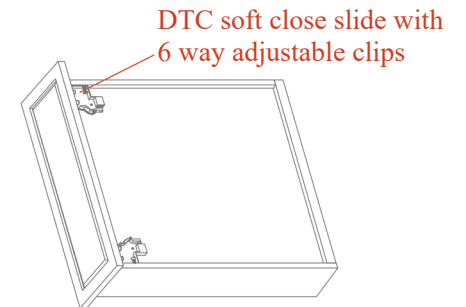
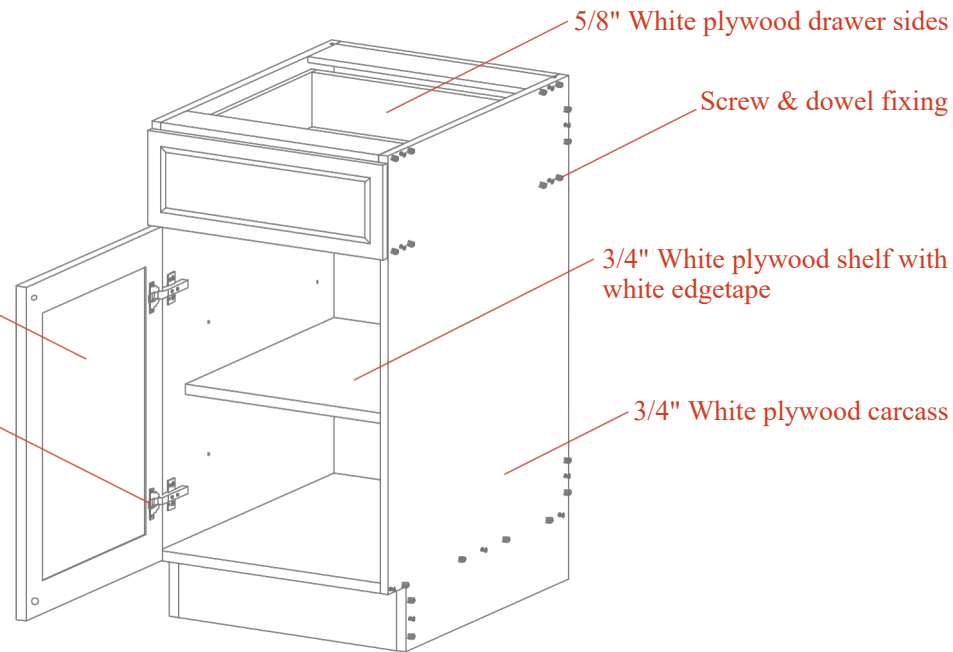
Comes with:

Bumpers
Screw cover stickers
Shelf supports
Screws & dowels
Hinges & slides

Slab Doors: MDF core with PET finish

Shaker Doors: MDF center piece
with solid wood stiles & rails

DTC Concealed 6 way adjustable hinge



W **30** **12**
Wall Cabinet Cabinet Width Cabinet Height

The alphabet letter: Type of cabinet.
The 1st set of numbers: Width of the cabinet.
The 2nd set of numbers: Height of the cabinet.

B **24**
Base Cabinet Cabinet Width

The alphabet letter: Type of cabinet.
The following numbers: Width of the cabinet.

W **30** **12** **24**
Wall Cabinet Cabinet Width Cabinet Height Cabinet Depth

The 3rd set of numbers: Depth of the cabinet.
Wall cabinets are 12” deep unless otherwise noted. Whenever a wall cabinet depth is not a standard 12”, it is represented by a third set of numbers.

Example:

W3012 stands for a wall cabinet that’s 30” wide and 12” high and 12” deep.
W301224 stands for a wall cabinet that’s 30” wide, 12” high and 24” deep.

3 **DB** **24**
3Drawers Drawer Base Cabinet Width

Base cabinets are 24” deep unless otherwise noted. Whenever a base cabinet has all drawers and no doors, also known as a drawer base, the cabinet code will start with a number. This represents the number of drawers the cabinet has.

Example:

B24 stands for a base cabinet with drawer and doors that’s 24” wide.
3DB24 stands for a three drawer base cabinet that’s 24” wide.

GW-W1512-D

Color Code

Cabinet Code

Door

SX - W3012

Cabinet Code

Cabinet Code

GW-B24-D

Color Code

Cabinet Code

Door

SX - B24

Cabinet Code

Cabinet Code

GW-TEP

Color Code

Accessory Item Code

Understanding the Packing Slip Items

Doors ordered and displayed on the packing slip starts with a color code, followed by the cabinet code and ends with the letter “D”.

Accessories ordered and displayed on the packing slip starts with a color code, and ends with the item code.

Cabinet boxes ordered and displayed on the packing slip starts with the cabinet code “SX” and ends with the cabinet code.

Example: A W1512 cabinet with a high gloss white door will be displayed as: **one SX-W1512 + one GW-W1512-D.**

A W3012 cabinet with high gloss white doors will be displayed as: **one SX-W3012 + two GW-W1512-D.**

A B24 cabinet with high gloss white drawer front and doors will be displayed as: **one SX-B24 + one GW-B24-D**

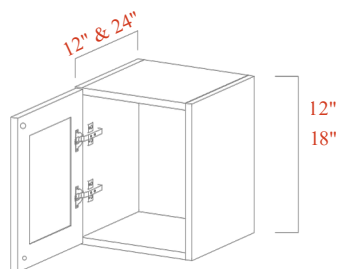
A high gloss white tall end panel will be displayed as: **GW-TEP**

Order
Codes

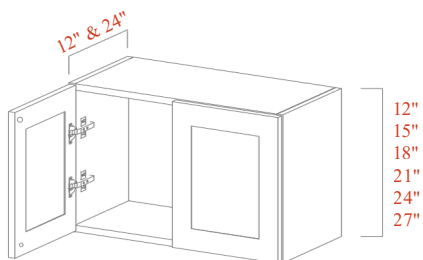
Single Door Wall Cabinet
No Shelves

12"H
W0912
W1212
W1512
W1812
W2112

18"H
W181824



Double Door Wall Cabinet



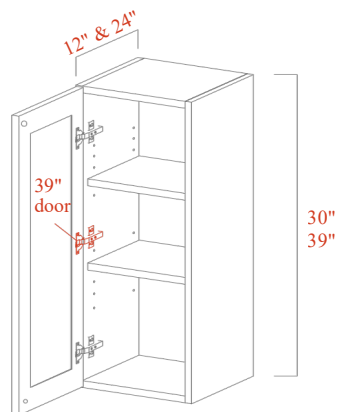
12"H (No shelves)	15"H (No shelves)	18"H (No shelves)	21"H (No shelves)	24"H (1 shelf)	27"H (1 shelf)
W2412	W2415	W2418	W2421	W2424	
W2712	W2715	W3018	W3021	W2724	
W3012	W3015	W3318	W3321	W3024	N/A
W3312	W3315	W3618	W3621	W3324	
W3612	W3615			W3624	
W3912					

W301224 W301524 W241824 W302124 W302424 W242724
W331224 W331524 W301824 W332124 W332424 W302724
W361224 W361524 W331824 W362124 W362424
W361824

Single Door Wall Cabinet
2 Shelves

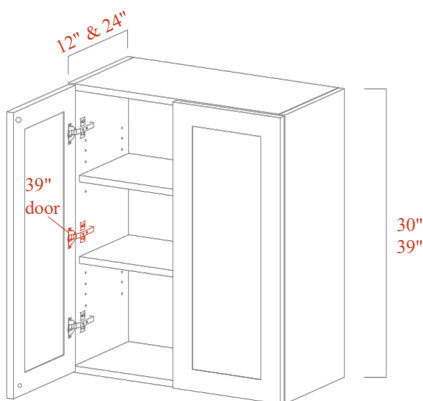
30"H
W0930
W1230
W1530
W1830
W2130

39"H
W0939
W1239
W1539
W1839
W2139



W183024 W183924

Double Door Wall Cabinet
2 Shelves

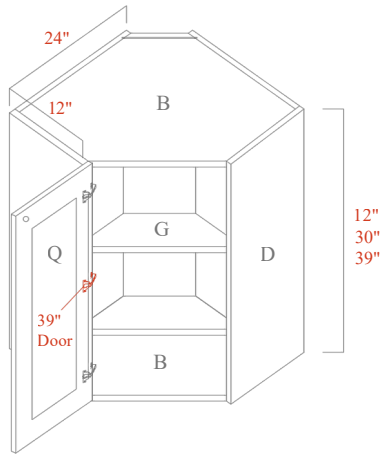


30"H
W2430
W2730
W3030
W3330
W3630
W3930

39"H
W2439
W2739
W3039
W3339
W3639
W3939

W243024 W243924
W303024 W303924
W363024 W363924

Diagonal Corner Wall Cabinet

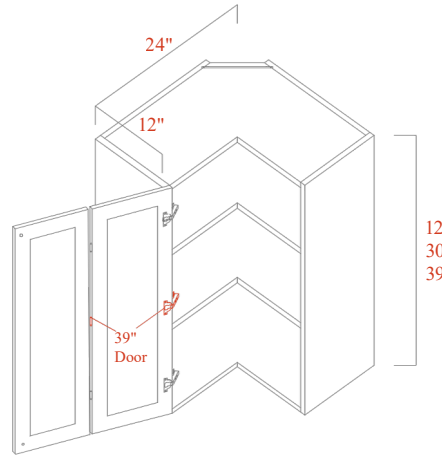


12''H
DCW2412
(No shelves)

30''H
DCW2430
(2 shelves)

39''H
DCW2439
(2 shelves)

Wall Easy Reach Cabinet

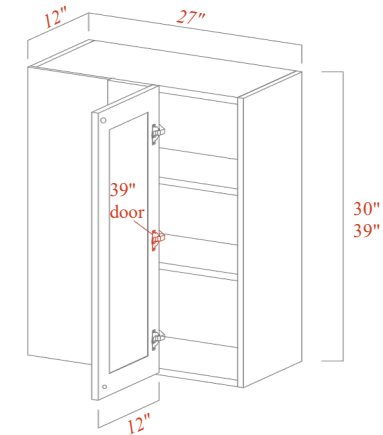


12''H
WER2412
(No shelves)

30''H
WER2430
(2 shelves)

39''H
WER2439
(2 shelves)

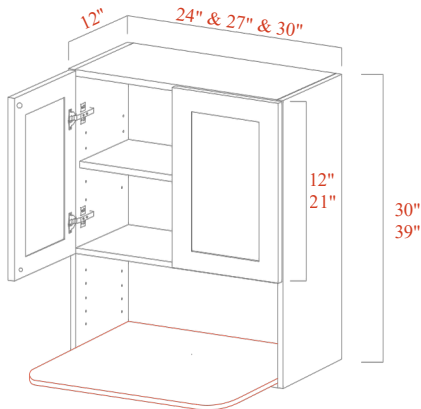
Wall Blind Corner Cabinet



30''H
WBC2730
(2 shelves)

39''H
WBC2739
(2 shelves)

Wall Microwave Cabinet



30''H
MO2430
MO2730
MO3030

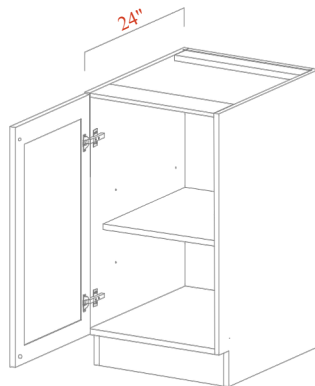
39''H
MO2439
MO2739
MO3039

A wall microwave cabinet is a 12'' deep W24XX/ W27XX/ W30XX wall cabinet at 30'' or 39'' height with one microwave shelf and a divider.

The microwave shelf is 17'' deep in 3/4'' white plywood.

Full Height Single Door Base Cabinet

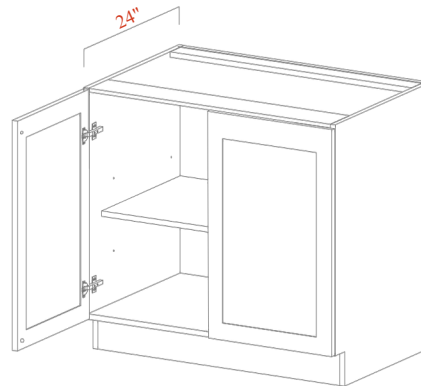
1 Shelf



BT9
BF12
BF15
BF18
BF21

Full Height Double Door Base Cabinet

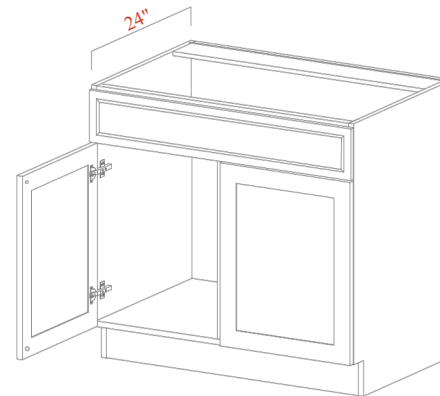
1 Shelf



BF24
BF27
BF30
BF33
BF36
BF42

Sink Base Cabinet

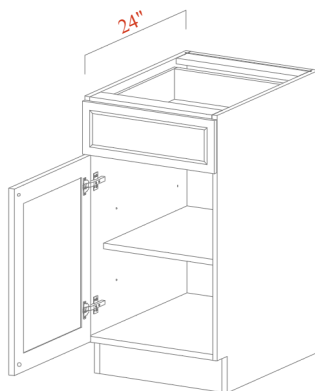
No Shelves



SB24
SB27
SB30
SB33
SB36
SB42

Single Door Base Cabinet

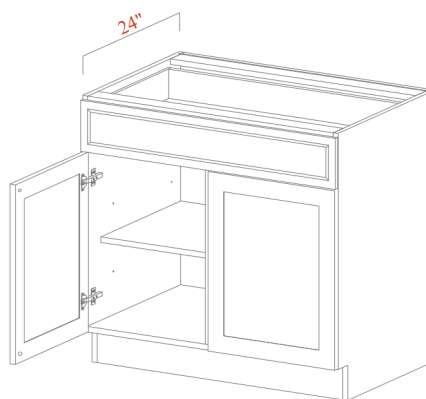
1 Shelf



B12
B15
B18
B21

Double Door Base Cabinet

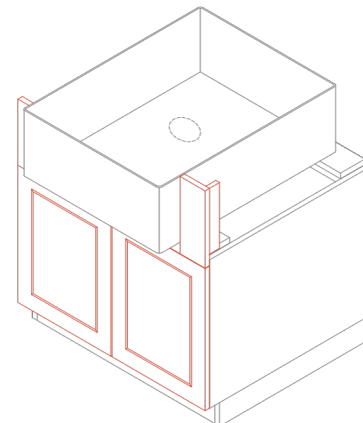
1 Shelf



B24
B27
B30
B33
B36
B39

Farmer Sink Base Cabinet

No shelf

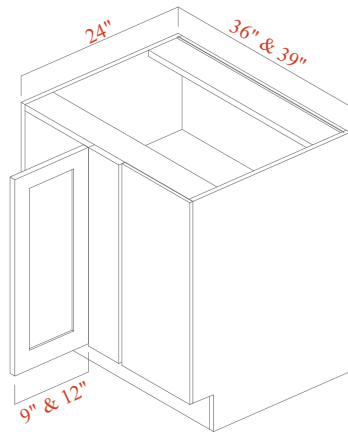


19 1/2"H	22 1/2"H
W301524	W301824
W331524	W331824
W361524	W361824

25 1/2"H	28 1/2"H
W302124	W302424
W332124	W332424
W362124	W362424

Farmhouse sink base cabinet is ordered as a 24" deep wall cabinet and a 3"x39" filler (F339). The indicated height is the finished cabinet height (including toe kick). The toe kick is not provided.

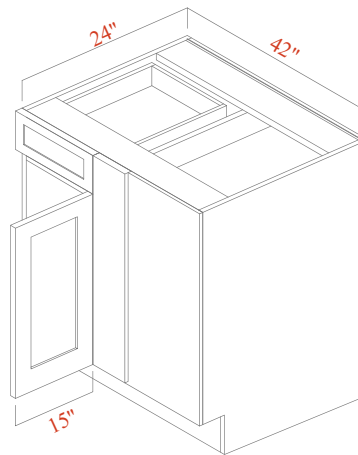
Base Blind Corner Cabinet
1 Shelf



BBC36
(9" Door)

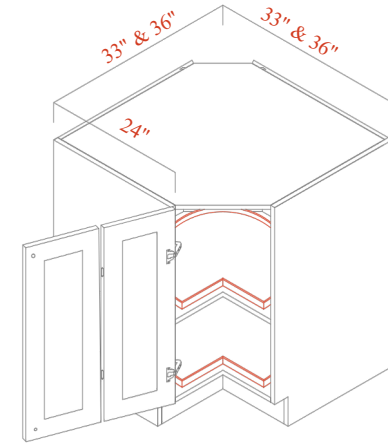
BBC39
(12" Door)

Base Blind Corner Cabinet
1 Shelf & 1 Drawer



BBC42
15" Door &
15" Drawer

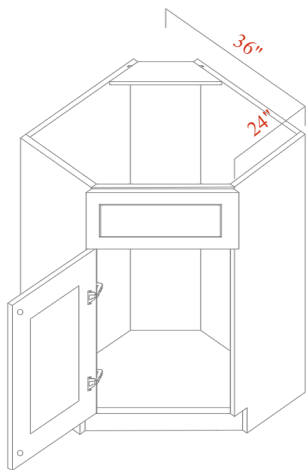
Lazy Susan Cabinet
1 Shelf (Add on: turn tables)



BLS33
BLS36

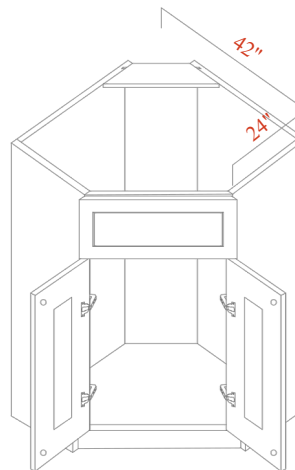
Turn Table
TB33-36

Single Door Diagonal Corner
Base Cabinet



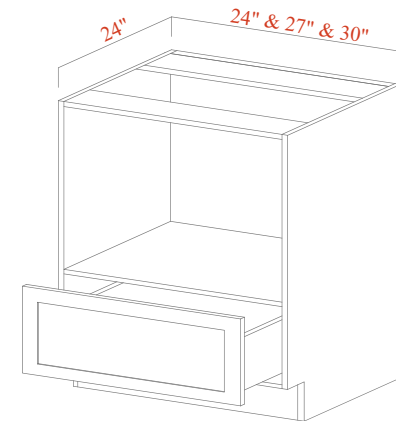
DCB36
(No shelves)

Double Door Diagonal Corner
Base Cabinet



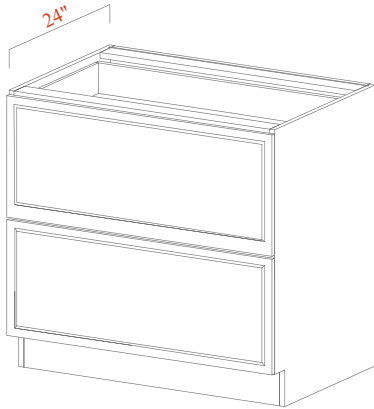
DCB42
(No Shelves)

Microwave Base Cabinet
No Shelves



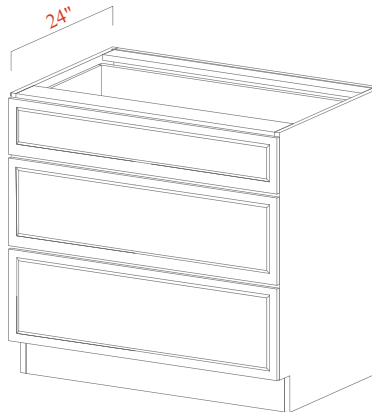
MB24
MB27
MB30

2 Drawer Base Cabinet
2 Drawers



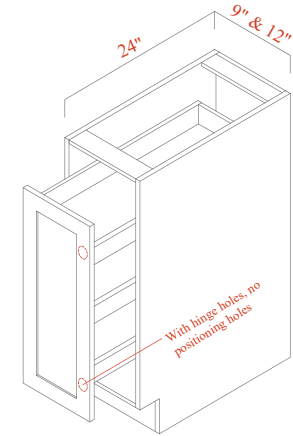
2DB24
2DB27
2DB30
2DB33
2DB36

3 Drawer Base Cabinet
3 Drawers



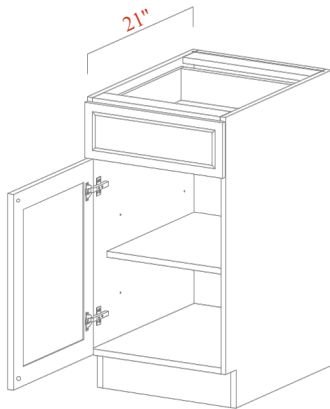
3DB12
3DB15
3DB18
3DB21
3DB24
3DB27
3DB30
3DB33
3DB36

Base Spice Rack Cabinet
Pull out unit (3 Tiers)



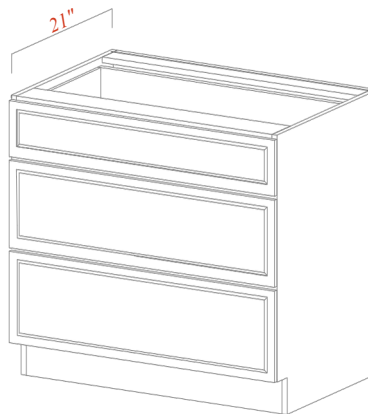
BSR09
BSR12

Single Door Vanity Base Cabinet
1 Shelf



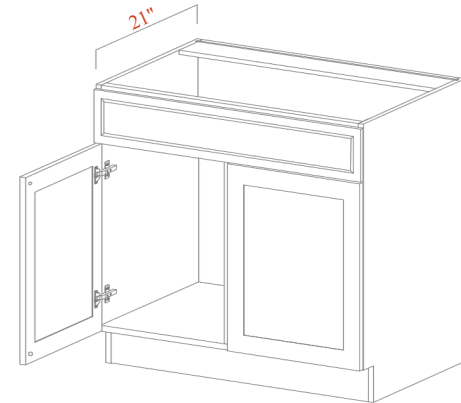
VB12
VB15
VB18
VB21

Vanity 3 Drawer Base Cabinet
3 Drawers



3VDB12
3VDB15
3VDB18
3VDB21
3VDB24
3VDB30

Vanity Sink Base Cabinet
No Shelves

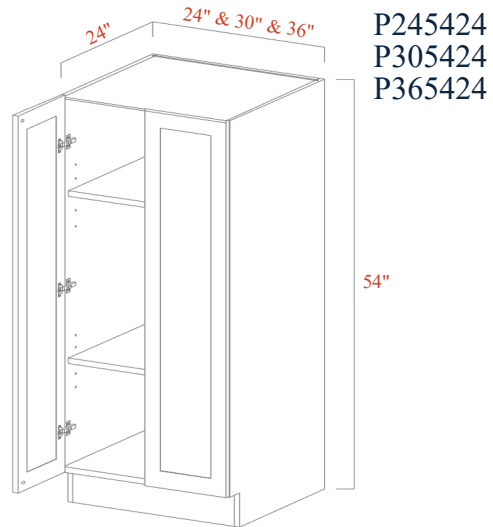


V2421
V2721
V3021
V3321
V3621

Single Door Pantry Base Cabinet
2 Shelves



Double Door Pantry Base Cabinet
2 Shelves

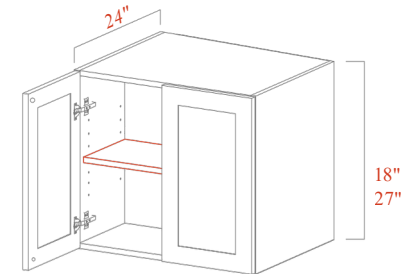
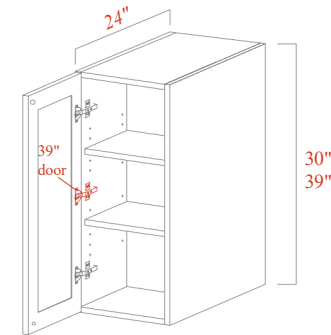


How to order a Tall Cabinet

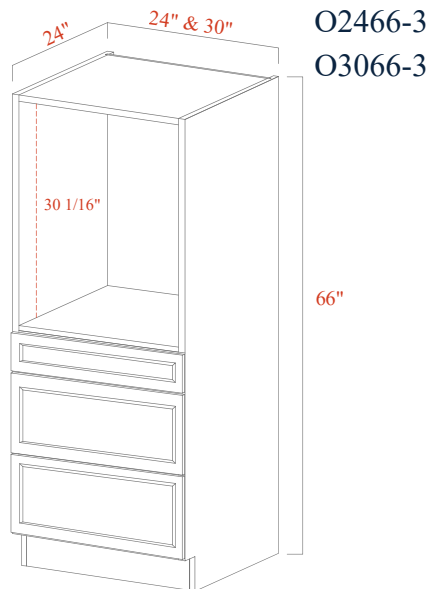
A tall cabinet can be ordered as one pantry base or one oven cabinet and one 24" deep wall cabinet at various heights.

Example 1:
P185424 + W183924

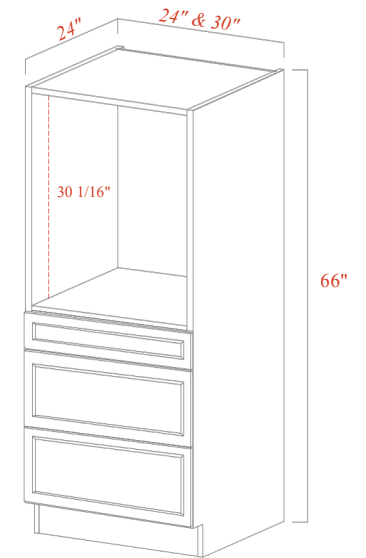
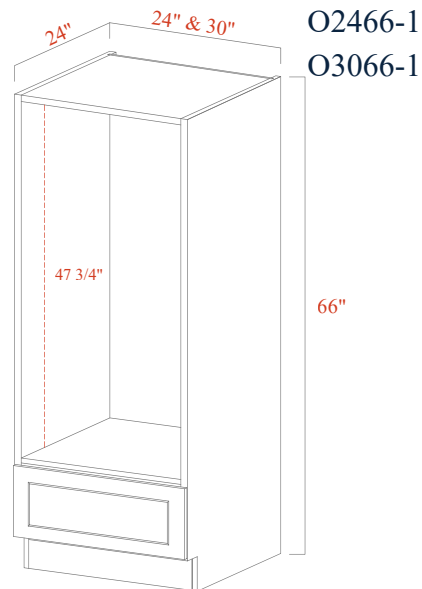
Example 2:
O2466-3 + W241824



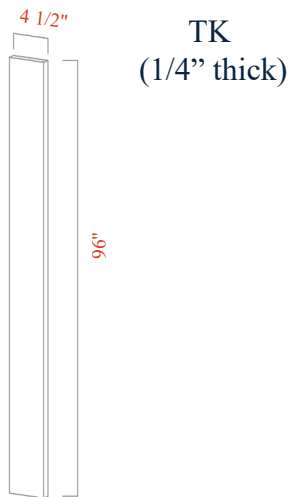
3 Drawer Oven Cabinet
3 Drawers



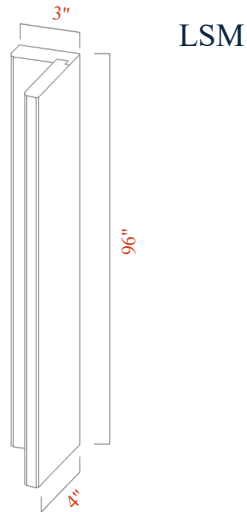
1 Drawer Oven Cabinet
1 Drawer



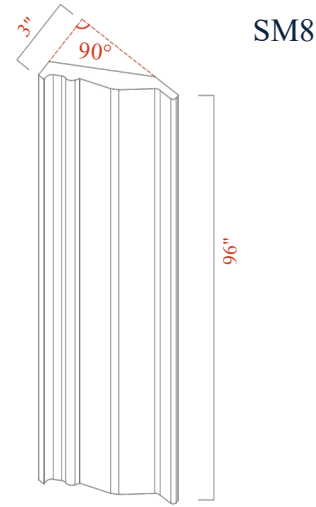
Toe Kick



L Shaped Molding



Crown Molding

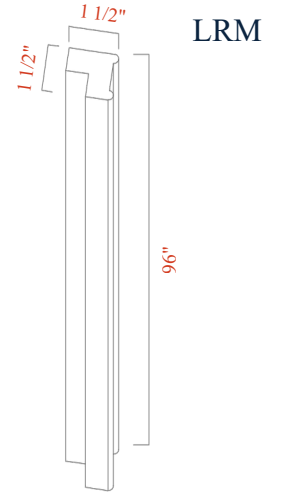


Filler For Base & Wall Cabinets

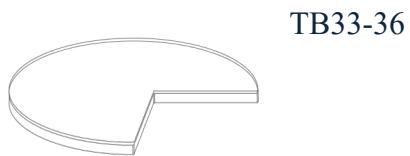


WF339: 3"x 39"
WF639: 6"x 39"
TF396: 3"x 96"
TF696: 6"x 96"

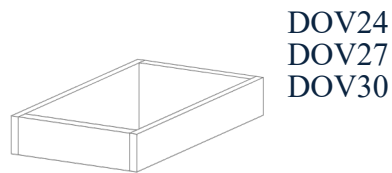
Light Rail Molding



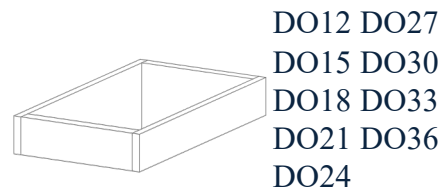
Turn Table For BLS33 / BLS36



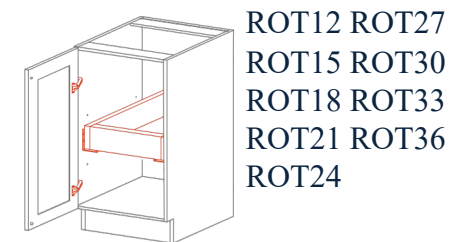
Drawer Box For 21" Deep Base Cabinets



Drawer Box For 24" Deep Base Cabinets



Roll Out Tray For 24" Deep Cabinets



Panels



Wall End Panel (WEP): 14" x 42"
Oversized Wall End Panel (OWEP): 14" x 57"
Base End Panel (BEP): 27" x 35 1/2"
Island Panel (IP9635): 96" x 35 1/2"
Deep island End Panel (DIEP): 37 3/4" x 35 1/2"
Tall End Panel (TEP): 27" x 96"
Oversized Tall End Panel (OTEP): 27" x 108"

Roll out trays can be installed in any 24" deep cabinets. Matching pairs of undermount slides and lazy susan cabinet hinges will be provided for the cabinet you're installing the roll out trays on.

Take the measurements and photos of the site. The Kitchen Measuring Guide on page 22 and the kitchen planning checklist will help you through this process.

To order cabinets: contact
info@velocitybuilding.ca



Select the door profile and color you want to order. Please refer to page 11 & 12 for the cabinet identifications and order codes.

You will receive a confirmation email from us. We will send you the quotes and invoices. Please feel free to reach out to: info@velocitybuilding.ca if you have further questions.

Kitchen Planning

Appliance sizes: Confirm the appliance sizes before designing the kitchen. Check local building codes for ventilation requirements.

Ceiling heights: Be aware of ceiling heights, locations of drop ceilings and bulkheads. Wall cabinets come in various heights in terms of ergonomic designs.

Pantries: All pantry cabinets come in a wall and a base unit.

Set a budget: Knowing your budget is essential for a design consultant to recommend appropriate material and cabinet finishes for your kitchen. This will ensure that you are always in control of the cost and there are no surprises.

Set a timeframe: Understand the lead times.

Kitchen layout: Decide how you want to layout your kitchen. It could be U shaped, L shaped or with an island.

Organizing hardware: Determine if any organizing hardware will be used for your kitchen.

Some examples:

- a. Turntable for lazy susan base corner cabinet.
- b. Pull out tray for pantry cabinets or base cabinets.
- c. Pull out organizers/ garbage bins

Discover your Design Preferences

Some examples:

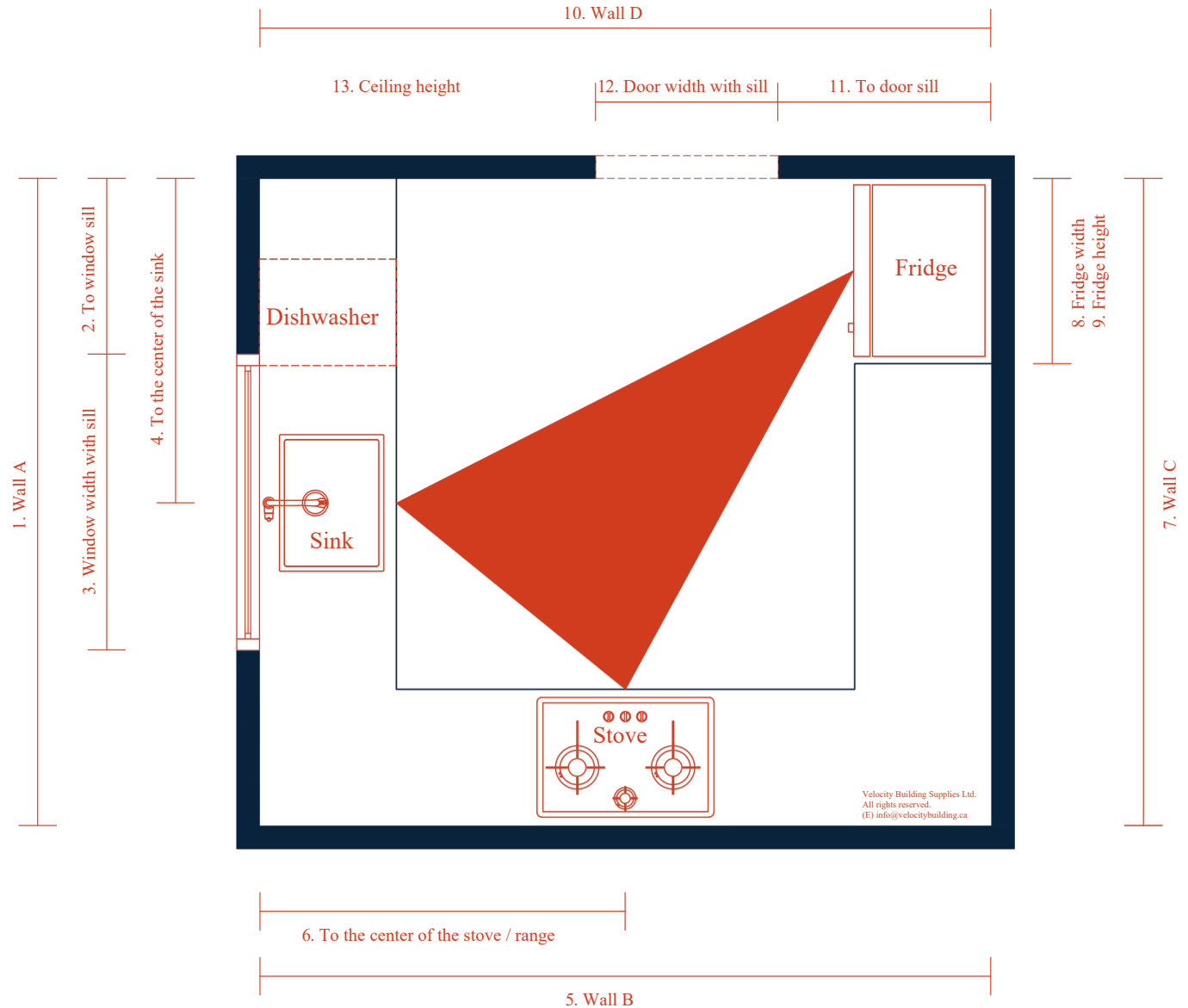
1. Do you want cabinets to be installed up to the ceiling?
2. Do you want to install crown moldings?
3. Do you want any islands or peninsulas?
4. Do you want any pantry cabinets?
5. Do you want any organizing hardware?
6. Do you want a microwave hood above the range/stove?

Keep in Mind

- a. Prepare a rough kitchen floor plan indicating placement of the stove, fridge and sink. Refer to the sample diagram on page 22.
- b. Mark the gas line, stove plug-in, refrigerator plug-in, water supply, and drain. Take a note of the bulkheads, and anything that's fixed in the space.
- c. Indicate the type of hood to be installed:
Over the range (OTR) **OR**
Built in hood **OR**
Wall/ ceiling mount hood
- d. The Kitchen Planning Guide on the right and the measurement example on page 22 will assist you through the process of planning for your dream kitchen!

Measurement Example

1. Wall A
2. Wall to window sill
3. Window width including sill
4. Wall to the center of the sink
5. Wall B
6. Wall to the center of the stove
7. Wall C
8. Fridge width
9. Fridge height
10. Wall D
11. Wall to door sill
12. Door width including sill
13. Ceiling height



The appliance size greatly affects your kitchen layout.
Fill out the sizes so you can better plan for your kitchen!

Appliance	Width	Height	Depth	Brand & Model
-----------	-------	--------	-------	---------------

Sink:

Fridge:

Range:

Dishwasher:

Microwave:

Other:



Kitchen Measurement Checklist

- ☐ Indicate the lengths of all walls. Measure from corner to corner.
- ☐ Indicate the sizes of doors & windows and include the measurements from wall corner to the trim of doors & windows. Include door swing directions.
- ☐ Indicate measurements from wall corner to the center of electrical plugs and sinks.
- ☐ Include waterline and floor drain if applicable.
- ☐ Indicate the measurements from wall corner to the center of gas and power lines.
- ☐ Indicate sizes and locations of appliances. (i.e., Refrigerator, Range etc.)
- ☐ Indicate the ceiling heights. Include locations of drop ceilings and bulkheads.
- ☐ Wall blind corner cabinets must be installed 2-4" away from the adjacent wall, and base blind corner cabinets must be installed 8-10" from the adjacent wall to create clearances for the adjacent cabinets, doors, and hardware.
- ☐ Keep in mind that the cabinets will not be attached to the walls. Fillers are necessary between the cabinet and adjacent wall to create clearance for door opening.

☎ 431-866-6868
✉ info@velocitybuilding.ca
📍 18-1391 St James St,
Winnipeg, MB R3H 0Z1



 431-866-6868
 info@velocitybuilding.ca
 18-1391 St James St,
Winnipeg, MB R3H 0Z1



VELOCITY
BUILDING
SUPPLIES

