

Eco-Engine 6010



- Ultra High Definition Camera
- Strong Adaptability to Different Environments
- Host can be connected to a large screen through the HDMI
- Insertion Tube can withstand 200°C
- Easy to use, light and portable economical and practical
- 210° Articulation



(1) 902-405-4100



6289 Quinpool Rd
Halifax, B3L 1A4 Canada



info@indspek.com



www.indspek.com

1 Ultra High Definition Camera



Cameras Images & Applications



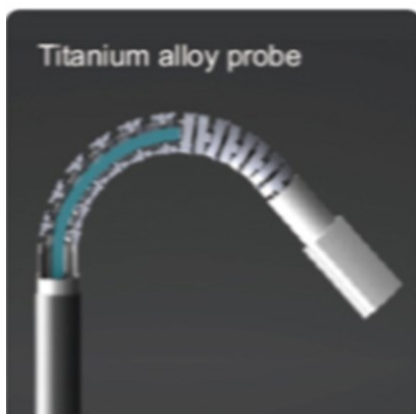
- Eco-Auto 6010 uses a highlight 3.5" TFT daylight display, equipped with 690,000 pixel Ultra Camera. This reflects the still image and accurate video of the object.
- The images are stored in JPEG/BMP compression format. Video is stored in MP4 format. The result gives the inspector an accurate visual with more precise detail.
- Magnetic base allows for secure positioning while you work.



2 210° Articulation



Tungsten Braided Layers



Titanium alloy probe

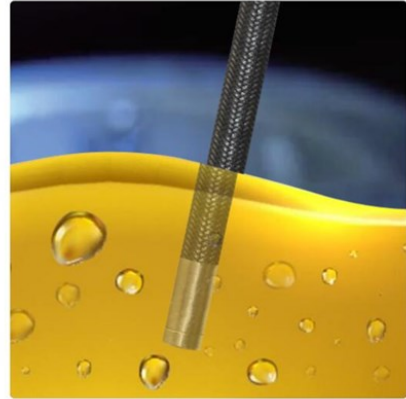
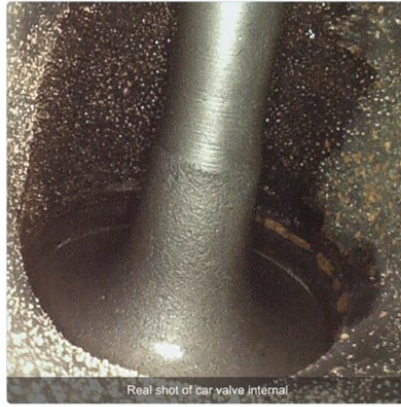
Our newly designed Insertion Tube can now articulate like no other in its class.

This precise articulation allows the probe to reach 210°.

When inspecting any engines or equipment, there is no need for multi-angle adjustment.

The target object can be seen directly with simple movement of the joystick control.

3 Strong Adaptability to Different Environments



Our premium strength Insertion Tube is made using the latest technology in tungsten titanium alloy wire. The double isolation structure design, laser welding precision, waterproof, oil resistant, corrosion resistant, is suitable for harsher working environments.

4 Host can be connected to a large screen through HDMI

The host can be connected to a large screen via the HDMI cable provided. High-quality transmission of uncompressed high-definition video, making it easy to judge the test results for off-site personnel, more suitable for multi-precision consultation.



5 Insertion Tube can withstand 200°C

C.P.O.S:

Cooling Pump Output System is an upgrade accessory to the Eco-Auto 6010. The Insertion Tube can be cooled, *with compressed air*, allowing it to operate normally at temperatures as high as 200°C.

No wasted time, waiting for engine to cool!



Ergonomically designed, light and portable, weighing only 0.99lbs/0.45kg with the battery. Simple and easy-to-understand with user-friendly interface for even the most inexperienced user. This device can be easily operated with one hand.

6 Product Specifications



Replacement Insert Tube	Users can easily replace the spare Insertion Tube/Probe
Camera Diameter (mm)	6.0mm
Camera Material	Titanium Alloy
Camera Pixel	690,000
Depth of Field	Standard: 10mm ~ 100mm
Field of View	85°
Image Magnification	10X
Light Control	7 levels
Bright/Chroma/ Contrast Ratio Adjustment	0-16 levels
White Balance	Auto white balance
Articulation Control	3 6 0 °all-way mechanical control/four-way articulation
Bending Angle/ Articulation	210°
Effective Working Length	1m
Insert Tube	Quadruple tungsten-braided tubes
Protecting Device of Durability	Buffer protection device between the host and wear-resistant tube
Language	English, French, Spanish, Dutch, Italian, Russian, Chinese, etc. (12)
Display	Highlight 3.5 inches TFT LCD
Image Resolution	960*720
Image/Video Format	JPEG/BMP
Host Structure	Handheld Design
Memory	Standard SD card:8G, Maximum: 32G
Data I/O port	Micro-USB port, HDMI output port
Probe Articulation Control	The speed of the probe articulation is controlled by rocker. Release the rocker to complete positioning.
Waterproof	Camera/Object glass/Tubes:IP67
Host Working Time	≥4.5 hours
Weight	≤0.45kg (with batteries)
Power Supply	Rechargeable lithium battery (dismountable)
Battery Capacity	4.2V,3200mAh
Power Consumption	3W
Charging Parameters	DC5V, Maximum current:1A