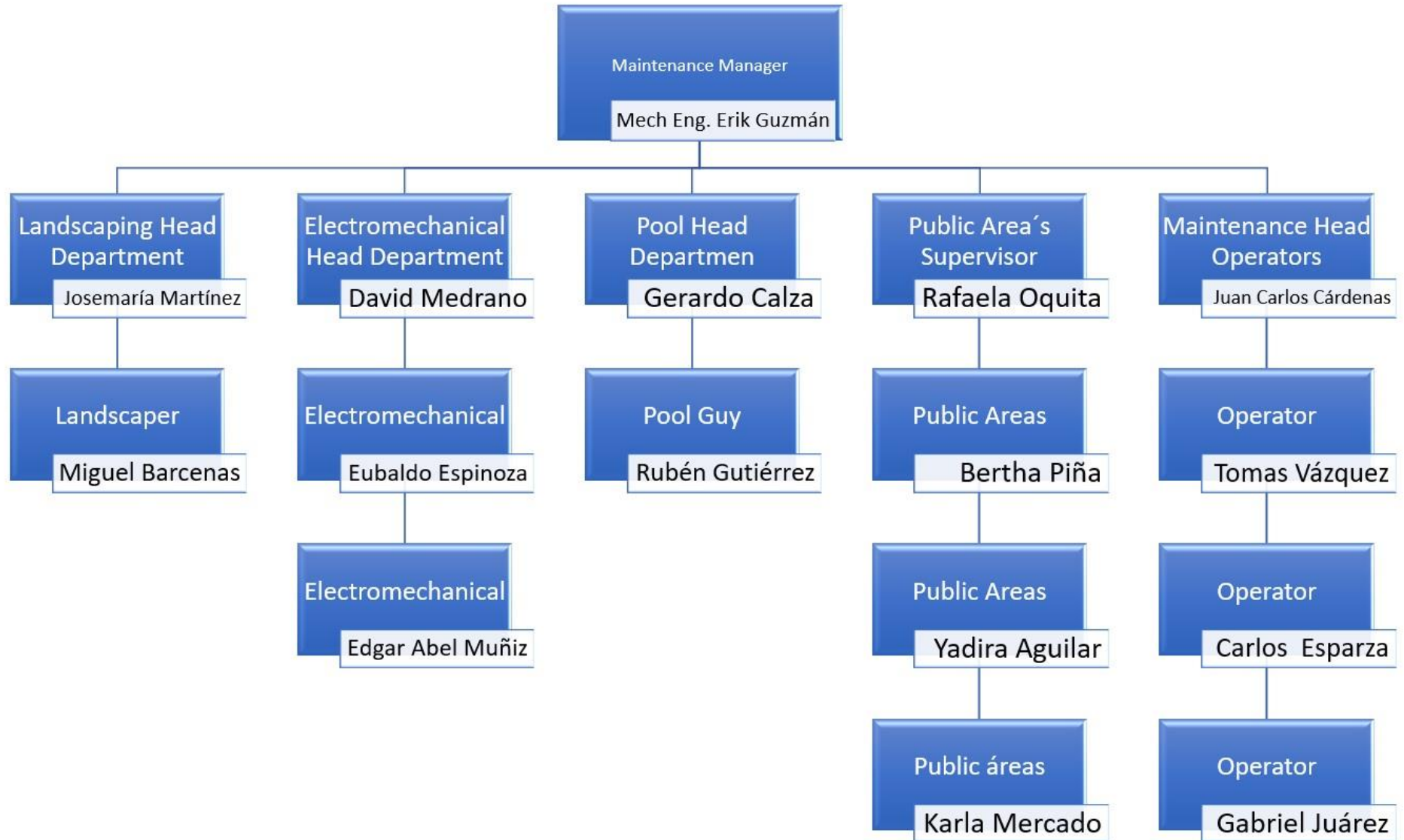


An aerial photograph of a resort complex. In the foreground, there is a large, irregularly shaped swimming pool with blue water, surrounded by a tan-colored deck with many blue lounge chairs. To the left of the pool is a building with a brown roof and a green awning. In the background, several multi-story resort buildings with balconies are visible, along with a sandy beach and the turquoise ocean under a clear blue sky.

Maintenance Department Report

Maintenance Staff



Operators

* Kitchen roof has been repair



Pruning Palm Tree



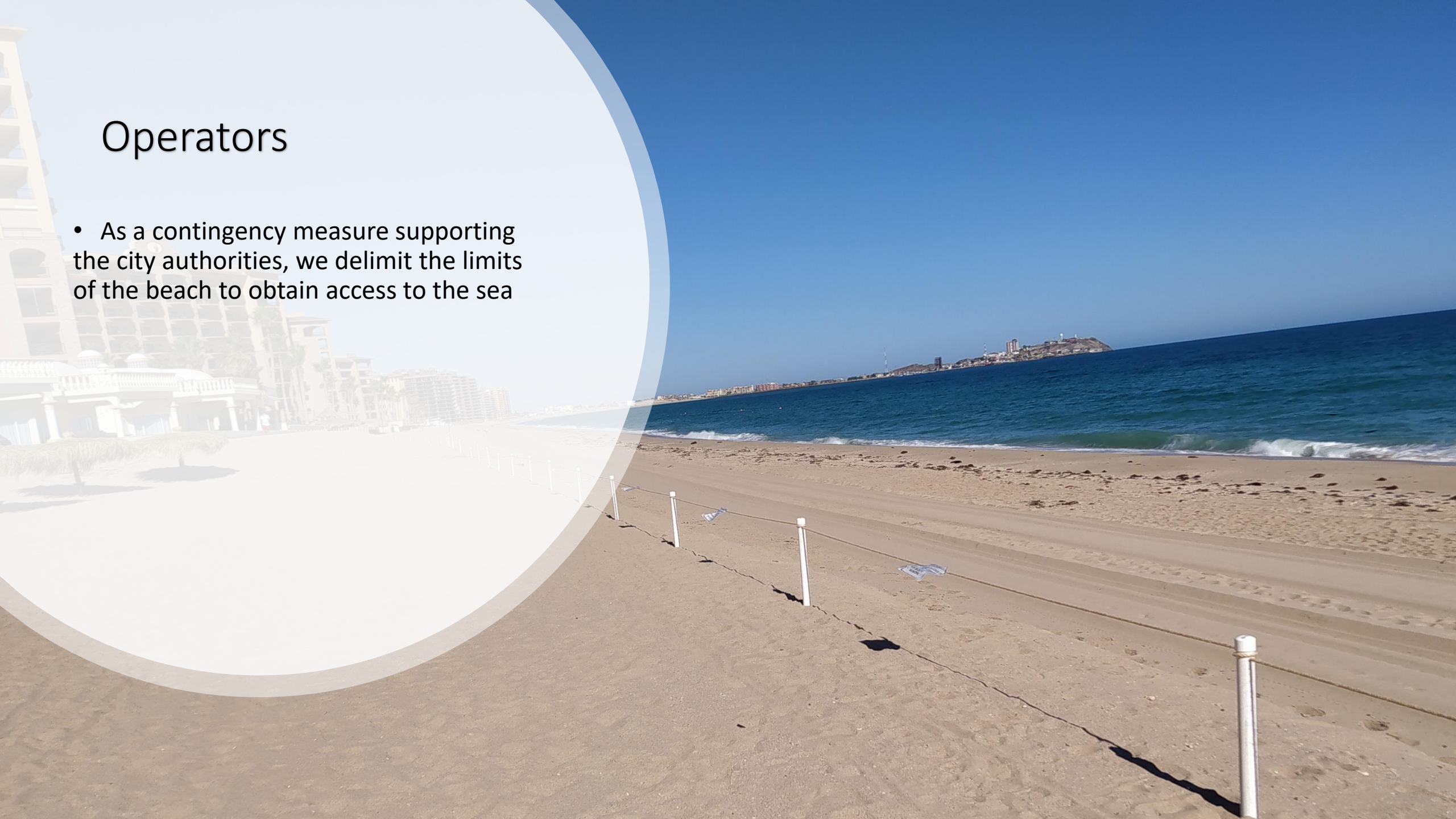
Operators

We change four palm leaf of palapas and move tow of the right side, but now we must move all at 25 feet's between them

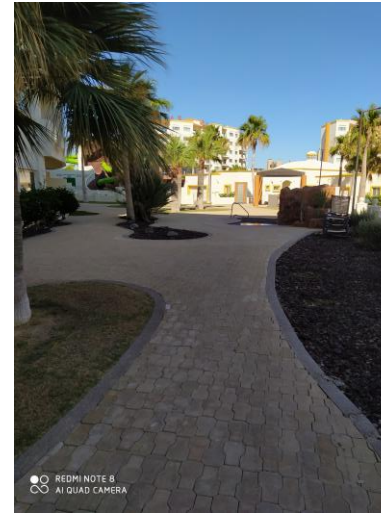
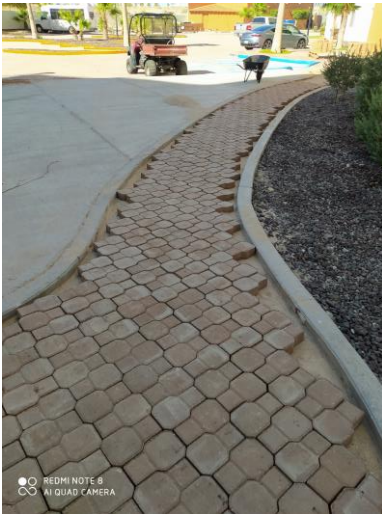
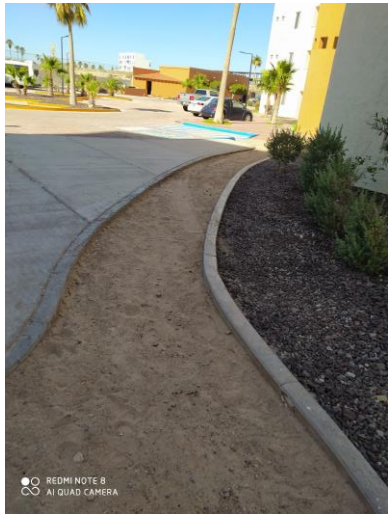
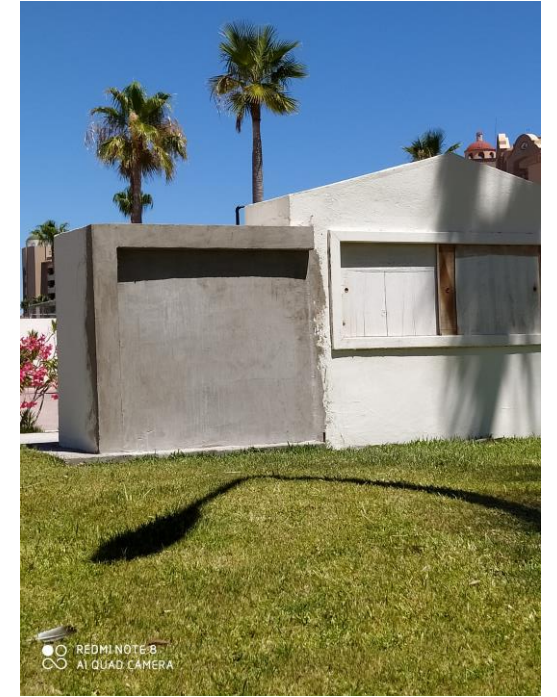
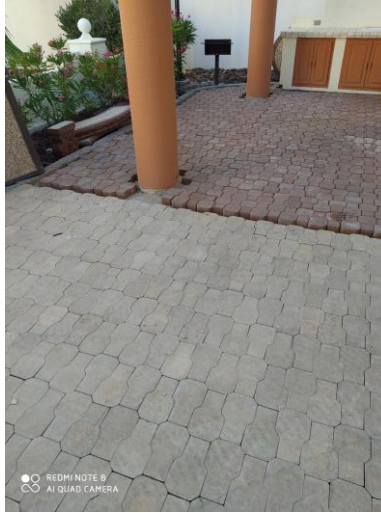


Operators

- As a contingency measure supporting the city authorities, we delimit the limits of the beach to obtain access to the sea



Operators



Electromechanical

5 Boilers has been repair and ready to use

- *Grande
- *Delphi
- *Bonita
- *Ying Yang
- *Baja



Electromechanical



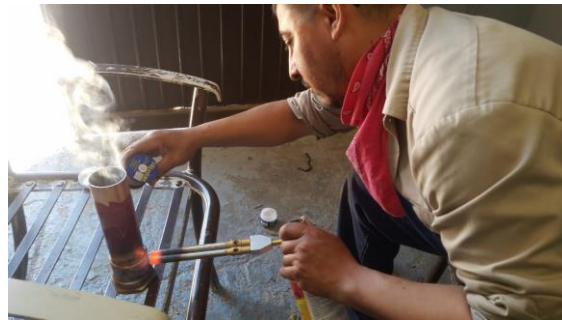


Electromechanical

Fire System

Electromechanical

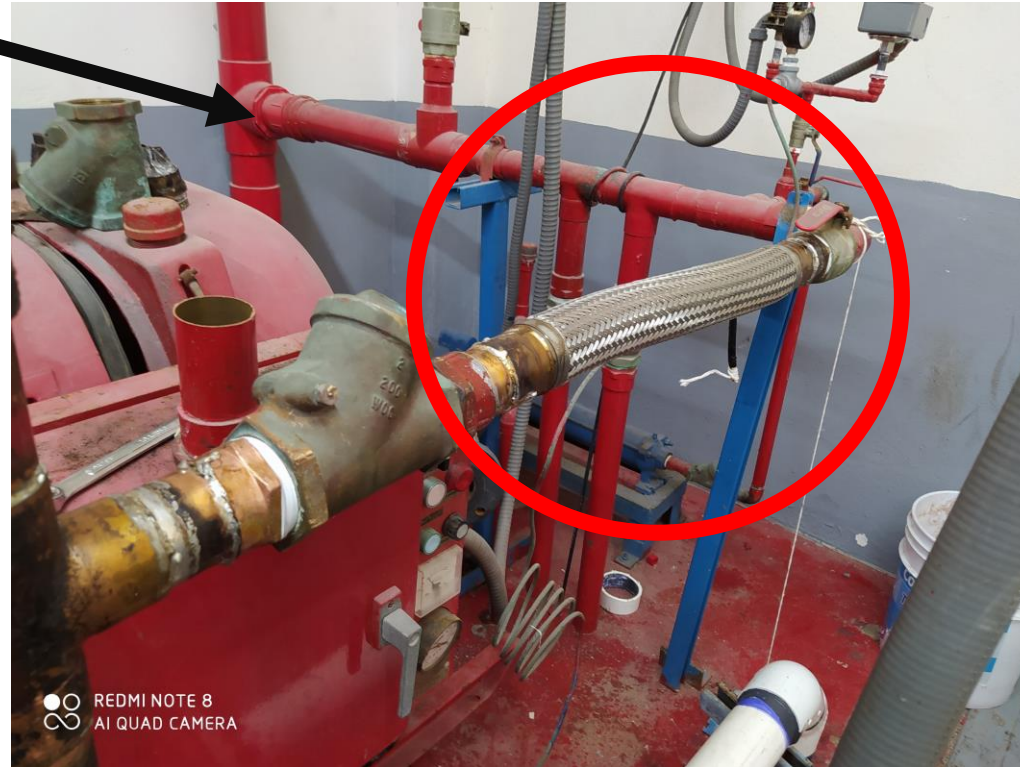
System Upgrade against water hammer effect and vibration



Electromechanical

*Fire System Upgrade

This section is a PVC and copper joint and that's why we added the vibration eliminator.



Electromechanical



We have been re-enabling the system, it had been neglected for a long time, by the time we repaired the electric motor and anti-vibration system, but as we went along we noticed more malfunctions due these the check valves are still not working

when we start the system pressure reaches 120 psi, but then it drops. We proceeded to check the system for water leaks and we found that the check valve had no gate and neither does the check valve on the suction part.

Horizontal Check Valve Broke



Suction Check Valve Broke





Electromechanical

Main Pump System

Electromechanical



- As we had planned, we would firstly maintain the pool pumps to be prepared for the season so we won't have any kind of bacteria, then to the main pump system in the machine room, we must mention that the systems were totally abandoned, had we continued in the same road maybe 4 more months and all the motors could have had stopped working due to the bad state they were in, at this moment we continue working on the pump`s to extend the life of these motors.

Electromechanical

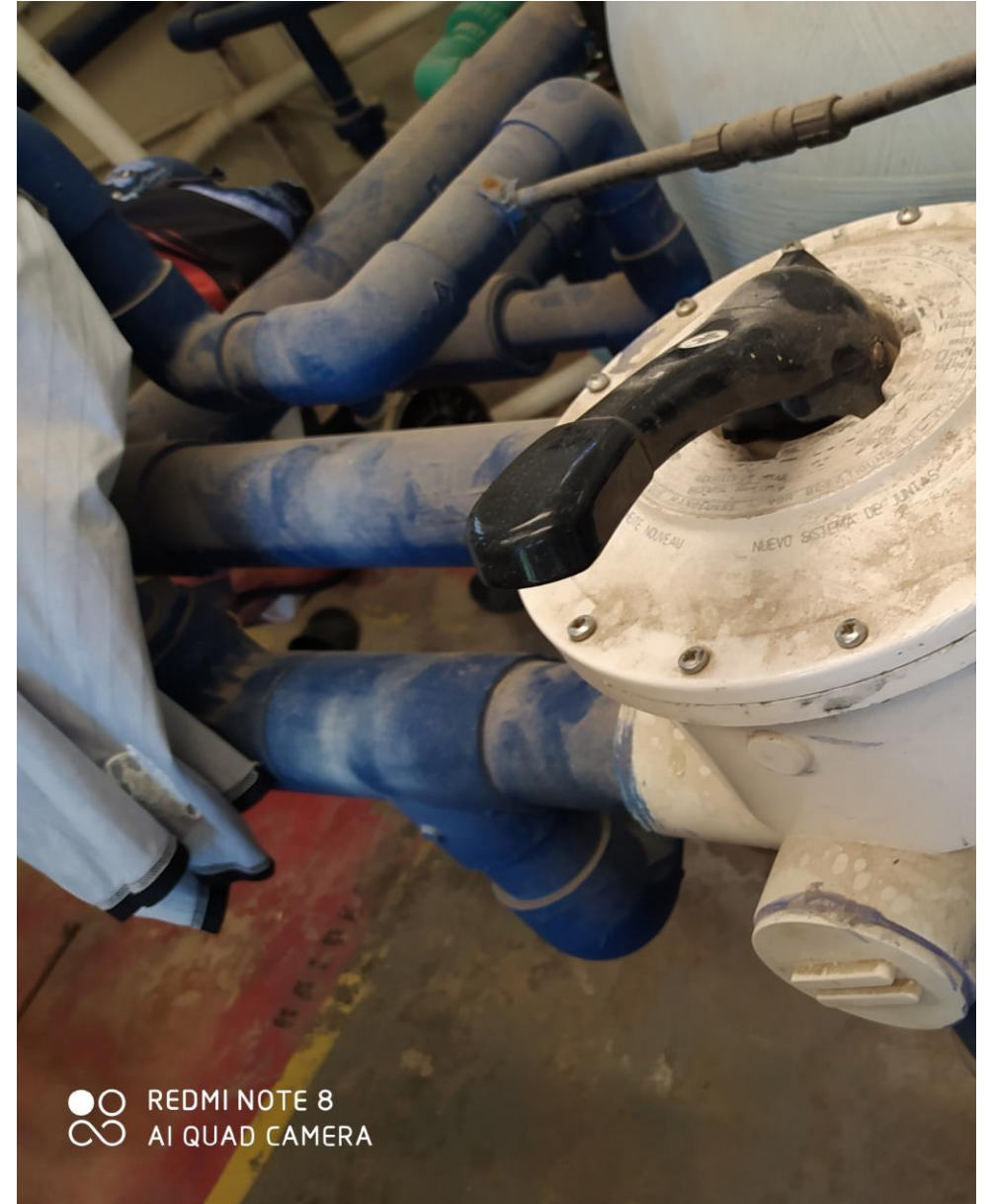






Electromechanical

- The Sand Filter of the Slide pool is incomplete, the internal pipes are broken and those are very expensive, the drain valve is broken as well. That's why we purchased a new one for cheaper than purchasing separate parts to fix it.
- (Brand ASTRALPOOL)





Electromechanical

New Sand Filter Installation



Electromechanical

New sand filter installation



Electromechanical

New Pump Installation

Pump was installed in the slide Pool

