

This is truly a HORROR story

I'm sure you'll agree

And I thank God that MY Mistress

didn't share HERS with ME!



Once upon
a time I
lent this
to Beth



because
her slave
NEEDED it
BADLY



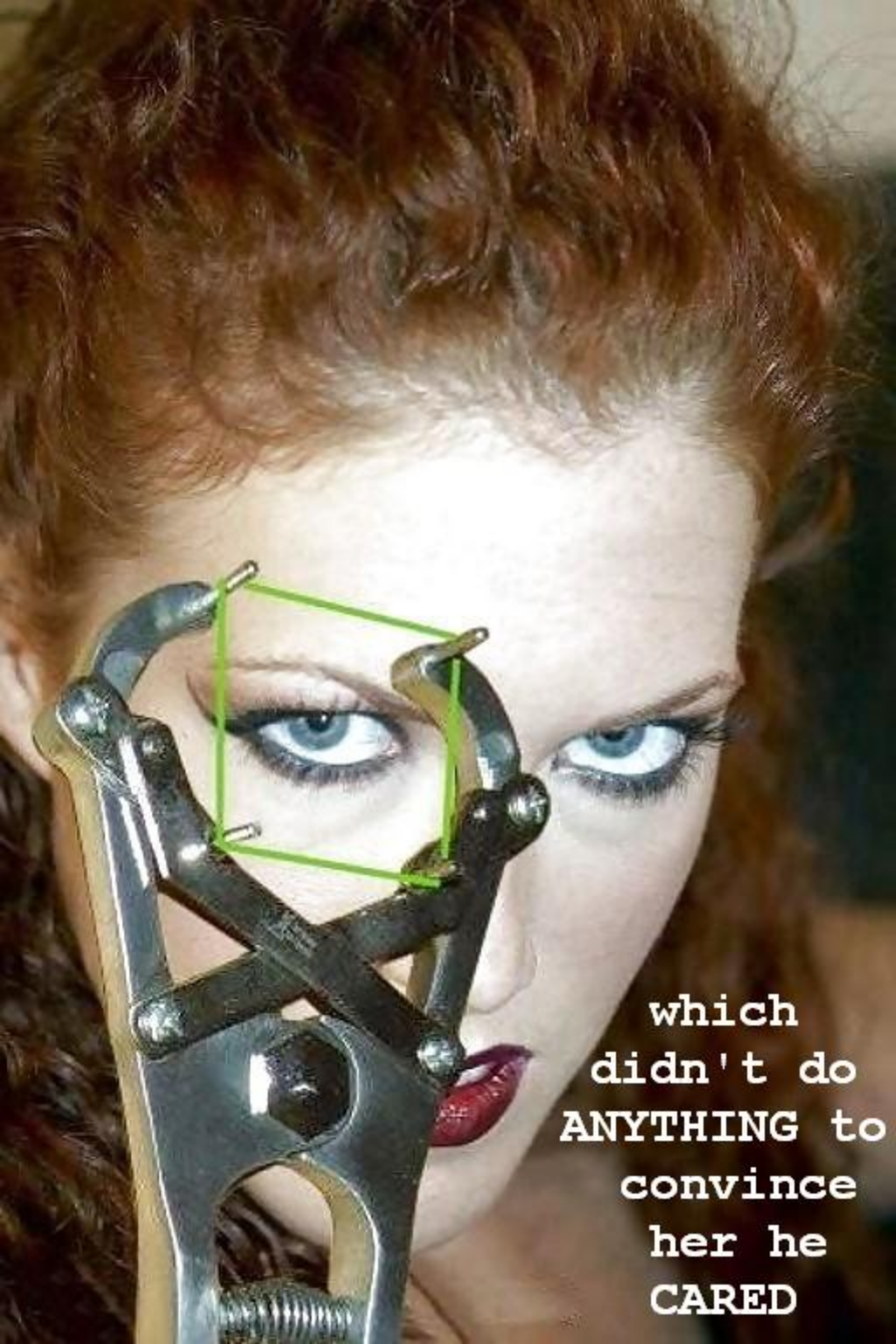
because
he hadn't
learned
YET



what a
Woman
goes
through
every
twenty
eight
days



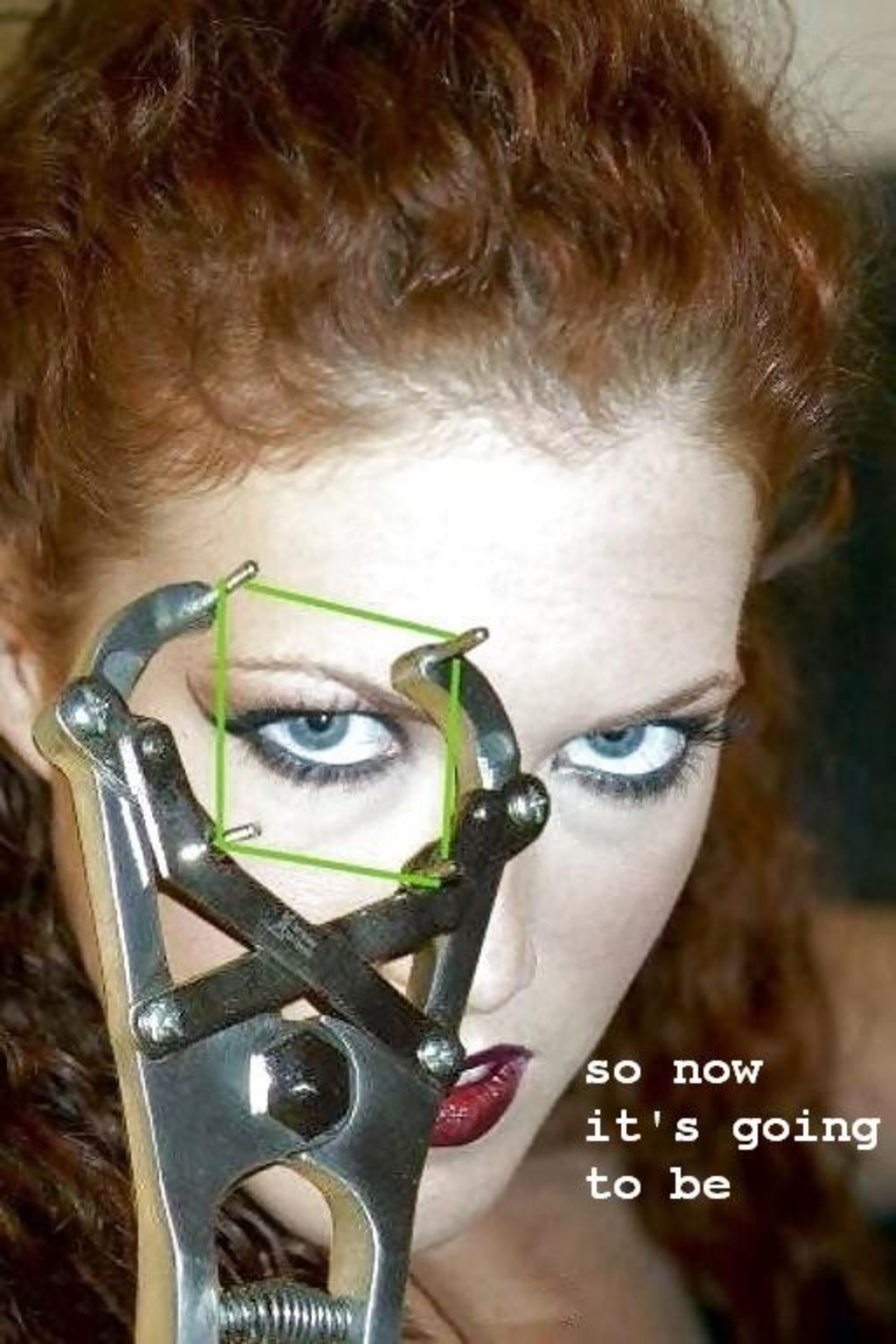
after
she tried
teaching
him all
the OTHER
damn
ways



which
didn't do
ANYTHING to
convince
her he
CARED




about her
discomfort
and her
suffering




so now
it's going
to be

"Shared!"

A woman with long dark hair, glasses, and red lipstick is shown from the chest up. She is wearing a dark blue t-shirt with white text. The text on the shirt reads "IT'S NOT PMS IT'S YOU", with "PMS" enclosed in a white rectangular border. To her right, there is a block of text that reads "YES! That's MUCH better!".

YES!
That's
MUCH
better!

IT'S NOT
PMS
IT'S YOU

A woman with long dark hair, glasses, and red lipstick is shown from the chest up. She is wearing a dark blue t-shirt with white text. The text on the shirt reads "IT'S NOT PMS IT'S YOU", with "PMS" enclosed in a white rectangular border. To her right, there is a text overlay that says "OK my slave THERE!".


OK my
slave
THERE !

IT'S NOT
PMS
IT'S YOU

A woman with long dark hair, glasses, and red lipstick is shown from the chest up. She is wearing a dark blue t-shirt with a white rectangular graphic in the center. The graphic contains the text "IT'S NOT PMS IT'S YOU". To her right, the text "NOW we can SHARE" is printed in a black, typewriter-style font. She is looking slightly to her right with a neutral expression.

NOW
we can
SHARE

IT'S NOT
PMS
IT'S YOU


A woman with long dark hair, glasses, and red lipstick is shown from the chest up. She is wearing a dark blue t-shirt with a white rectangular graphic in the center. The graphic contains the text "IT'S NOT PMS IT'S YOU". To her right, the text "the pain and the cramps" is written in a typewriter-style font.

the
pain
and the
cramps

IT'S NOT

PMS

IT'S YOU


A woman with long dark hair, glasses, and red lipstick is shown from the chest up. She is wearing a dark blue t-shirt with white text. The text on the shirt reads "IT'S NOT PMS IT'S YOU", with "PMS" inside a white rectangular border. To her right, there is a block of text in a typewriter font that reads "I have to endure every month of the year!".

I have
to
endure
every
month
of the
year!

IT'S NOT


PMS

IT'S YOU

A woman with long dark hair, glasses, and red lipstick is shown from the chest up. She is wearing a dark blue t-shirt. The t-shirt has white text that reads "IT'S NOT PMS IT'S YOU". The word "PMS" is enclosed in a white rectangular border. To the right of the woman, there is a block of text in a typewriter-style font that reads "Isn't that RIGHT slave?".

Isn't
that
RIGHT
slave?

IT'S NOT
PMS
IT'S YOU

A woman with long dark hair, glasses, and red lipstick is shown from the chest up. She is wearing a dark blue t-shirt with a white rectangular graphic in the center. The graphic contains the text "IT'S NOT PMS IT'S YOU". To her right, the text "SHOW them my dear!" is written in a typewriter-style font.


SHOW
them my
dear!

IT'S NOT
PMS
IT'S YOU

YES
MISTRESS!







SURE
hurts,
DOESN'T
it?

IT'S NOT
PMS
IT'S YOU

YES
MISTRESS!



A woman with long dark hair, glasses, and red lipstick is shown from the chest up. She is wearing a dark blue t-shirt with a white rectangular graphic in the center. The graphic contains the text "IT'S NOT PMS IT'S YOU". She is looking slightly to the right with a slight smile. The background is a plain, light-colored wall.

GOOD !

IT'S NOT
PMS
IT'S YOU

A woman with long dark hair, glasses, and red lipstick is shown from the chest up. She is wearing a dark blue t-shirt with white text. The text on the shirt reads "IT'S NOT PMS IT'S YOU", with "PMS" enclosed in a white rectangular border. To her right, the text "Now SUFFER!" is printed in a black, serif font. She is looking slightly to the right with a neutral expression.

Now
SUFFER!

IT'S NOT
PMS
IT'S YOU

YES
MISTRESS!









The End



And he
CRIED
like a
BABY



and he
BEGGED for
relief



but she
kept them
TIGHT in
this rubber
band





until
SHE got
relief!



And I'd
love to
lend it
to YOUR
Mistress



Oh YES my
slave YES



next month
when YOUR
Mistress
starts HER
PMS!









