

# SHOW PROGRAM



## Welcome to the 2025 Ranch Horse Rendezvous

Dear Exhibitors, Families, Vendors, and Friends of the Ranch Horse Community,

Welcome to the **Ranch Horse Rendezvous**, brought to you by **West Coast Ranch Horse**— the Rendezvous is the largest all ranch horse show in Southern California. We are honored & excited to host you at the beautiful California Ranch Company for this year's 6<sup>th</sup> annual event.

At WCRH, we believe that every horse & rider deserves a place & a path to compete and grow. Since our founding in 2020, we have welcomed hundreds of new ranch riders into our community through clinics, introductory classes, & a supportive show environment. We have awarded over a thousand buckles and over \$250,000 in awards, cash and prizes. We take tremendous pride in the successes of those who began their journey here: many have gone on to compete at AQHA and other associations show at the highest levels, representing the ranch horse discipline with excellence and integrity.

Over the coming days, you'll witness not just competition & entertainment, but a celebration of what WCRH stands for:

- **Inclusivity across all levels** – from those stepping into their first class to seasoned Amateur and Open competitors
- **Diverse class offerings** including Ranch Riding, Ranch Trail, Ranch Rail, and Ranch Conformation plus creative events, memorial classes, team challenges and stakes classes
- **Divisions for everyone**, such as Open, Amateur, Amateur Select, Amateur Limited, Green Horse, Green Rider, Youth, Short Stirrup, and Leadline in addition to Futurities & Maturities for Open and Amateur riders
- **Education and community building**, with clinics, mentorship, and the best community of ranch riders around

We extend our deepest gratitude to our sponsors, vendors, volunteers, judges, and staff. Behind every smooth-running show is a village of people dedicating their time and resources. Your support fuels this event and helps us continue to promote our discipline and nurture the growth of ranch riders across Southern California, the West Coast & beyond.

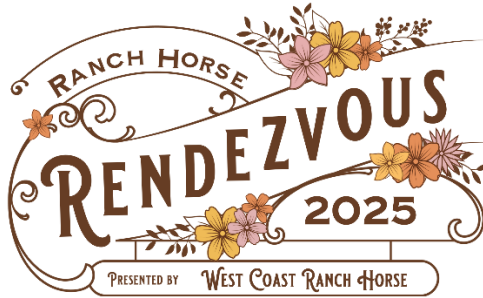
To our exhibitors—Thank you for bringing your passion, your horses, and your best efforts. To our guests and spectators—Thank you for being part of the energy and spirit that makes this Rendezvous more than a show; it's a celebration.

**Welcome to the 2025 WCRH Ranch Horse Rendezvous. Let's make this year the best yet—together.**

Let's go horse show!

**Jenni & Sean Dawson**

On behalf of West Coast Ranch Horse



## 6<sup>th</sup> Annual Celebration of the Ranch Horse

***All Breed WCRH Year End Event + AQHA Special Event!***

***Nightly entertainment & shopping with RV camping and stalls on site!***

***Clinic Day, Maturity & Futurity Day and Weekend Show!***

***Divisions for every level of horse & rider!***

**Dates:** October 16<sup>th</sup> – 19<sup>th</sup>, 2025

**Location:** California Ranch Company, 43101 Anza Rd, Temecula, CA 92592

**Stall & RV Move In:** No earlier than Wednesday October 15<sup>th</sup> at 12:00p

**Rendezvous website:** <https://westcoastranchhorse.com/rendezvous>

*(Refer to checklist at top of webpage for links for sign up and registration for all events.)*

**Pre-paid Entry Deadline:** Sunday, 10/5/2025 at 11:59pm

*Enter at [live.equiscribe.com](https://live.equiscribe.com) (late fee of \$5 per class applies after deadline)*

**Weekend Show Judges:** Clint Fullerton & Jill Griggs

**Ranch Work Team Challenge Judges:** Sami & George Hernandez

**Cherie Vonada Gamblers Choice Ranch Trail Judge:** George Hernandez

**Clinicians:** Sami & George Hernandez

**Announcer, Emcee & Show Secretary:** Sean Dawson

**Show Manager:** Jenni Dawson

**Show Foreman:** Bobby Conwell

**Ranch Trail Gate & Go-To-Guy:** Kev Daneshmand



OCT 16-19, 2025



CALIFORNIA RANCH  
COMPANY  
Temecula, CA

WEDS  
THURS  
FRIDAY  
SATURDAY  
SUNDAY

- 12P STALL MOVE IN - NOT BEFORE 12PM
- 
- 8A RANCH HORSE CLINICS (SEE SCHEDULE -COVERED ARENA & TRACK)
- 2-4P CHERIE VONADA MEMORIAL RANCH TRAIL COMPETITION
- 6P CHILI COOK OFF & EXHIBITOR POTLUCK W/ MUSIC AROUND THE  
CAMPFIRE (WCRH PROVIDED MAIN DISH - BONFIRE AREA)
- 
- 8A FUTURITY & MATURITY CLASSES BEGIN (COVERED ARENA)  
RENDEZVOUS GIFT SHOW (THROUGHOUT GROUNDS)
- 12-4P RANCH TRAIL PRACTICE W/ SAMI HERNANDEZ (1 HOUR SLOTS)
- 5P RANCH WORK TEAM CHALLENGE. LIVE MUSIC FROM MIKE  
SCULLY, CASH BAR & FOOD TRUCKS.
- 
- 7:30A RANCH HORSE SHOW CLASSES BEGIN (COVERED ARENA)
- 8A-2P RENDEZVOUS GIFT SHOW (THROUGHOUT GROUNDS)  
WORK AT WILL RANCH TRAIL (TRAIL COURSE)
- 5-7P COCKTAIL HOUR, COSTUME CONTEST & PARADE FOLLOWED BY  
FREESTYLE RANCH RIDING COMPETITION (COVERED ARENA)
- 7P RENDEZVOUS CATERED BBQ DINNER, LIVE MUSIC WITH BRYAN  
GAYLORD & THE COUNTRY STAR BAND + SILENT AUCTION  
(WESTERN TOWN)
- 
- 8A RANCH HORSE SHOW CLASSES BEGIN (COVERED ARENA)  
COFFEE & DONUTS (SPONSORED BY WOODS WESTERN)  
RENDEZVOUS GIFT SHOW (THROUGHOUT GROUNDS)
- 8A-2P WORK AT WILL RANCH TRAIL (TRAIL COURSE)

[WWW.WESTCOASTRANCHHORSE.COM](http://WWW.WESTCOASTRANCHHORSE.COM)



# CLINIC DAY THURSDAY

Oct 16th



# CALIFORNIA RANCH COMPANY

Temecula, CA

## CLINIC DAY SCHEDULE

8-11A  
Track

### RANCH HORSE 101 CLINIC

Join Rosie Cowley for an intro to the four WCRH recognized ranch classes: Ranch Riding, Ranch Rail, Ranch Trail & Ranch Conformation. Learn the basics & practice each of the riding classes with guidance from trainers & seasoned competitors. \$85/rider (limited to 10 riders)

8-11A  
Covered  
Arena

### PERFECT YOUR PATTERNS CLINIC

Join George & Sami Hernandez for a 3 hour clinic to help you fine tune your performance & improve your scores in ranch riding and ranch trail. The focus for this clinic will be on advanced aspects of both classes to improve your scores. \$175/rider (limited to 15 riders).

11A-12P  
Covered  
Arena

### RANCH HORSE JUDGING, SCORING & INSIGHTS

Join Sami & George Hernandez on the bleachers for an insightful overview & discussion of judging criteria & scoring for ranch horse classes. Time for Q&A. \$10/attendee

12-1P  
Covered  
Arena

### DON'T JUST STAND THERE (CONFORMATION CLINIC)

Join Sami & George Hernandez to learn how to best set up and show for best placings in the ranch conformation. \$40/attendee

12-1P  
TBD

### DISCOVER THE CA BRIDLE HORSE TRADITION

Dive into the heritage of the California bridlehorse—a classical training progression from hackamore to two-rein to the spade bit. Known for finesse and subtle communication, the bridlehorse tradition parallels the precision of Ranch Riding. Join Valley Center bridle horsewoman, Glynna Hoekstra, for a special demonstration and talk on how this timeless art brings out the best in horse and rider, blending old-world horsemanship with modern performance. \$10/attendee

1-2P  
Track

### ROPE HANDLING & DUMMY ROPING CLINIC

Learn the fundamentals of rope handling & practice dummy roping with George Hernandez. Bring your own rope, \$25/attendee

1-2P  
Covered  
Arena

### ADVANCED RANCH RAIL

Join Sami Hernandez as she evaluates each horse & rider team to give them tips to step up their game for the ranch rail. \$45/attendee.

2-3P  
Covered  
Arena

### WORKING EQUITATION DEMONSTRATION

Working Equitation is a fast-growing discipline in the U.S. that blends elements of dressage, trail, speed, and cattle work—closely aligned with Ranch Riding. Join Region 2 Director and coach Glynna Hoekstra as she narrates a live demo where three riders showcase the sport's versatility, open to all breeds and disciplines. Free for attendees.

3-5P  
Covered  
Arena

### RANCH TRAIL CLINIC

Join Sami Hernandez on the trail course for a 2 hour clinic focusing on improving your runs and scores on ranch trail obstacles and understanding what judges want to see. Will run Saturday Rendezvous patterns. \$95/rider (limited to 10 riders).





**BUCKLES! BANNERS! SASHES!**  
**HUGE RIBBONS THRU 10TH!**  
**RANCH SUITABILITY CLASSES!**

## LINDSAY JEROME MEMORIAL MATURITY & FUTURITY DAY

### Friday 10/17 classes: (8am start)

101. Maturity (7&O) - Ranch Horse Suitability Open
102. Maturity (7&O) - Ranch Horse Suitability Amateur
103. Maturity (7&O) - Ranch Rail Open
104. Maturity (7&O) - Ranch Rail Amateur
105. Ranch Prospect (2&U) - In-hand Ranch Trail
106. Ranch Prospect (2&U) - Longe Line
107. Ranch Prospect (2&U) - Conformation

### OPEN & AMATEUR MATURITIES

**\$150 nomination fee**

*includes all classes in division.*

*Buckles, sashes and banners to Champions,  
 Res. Champion prizes, sashes and banners,  
 fancy ribbons thru 10th.*

***Ranch Suitability is one pattern class including  
 ranch riding and ranch trail (scored separately).***

## RANCH HORSE FUTURITIES (PROSPECT, 4&UNDER, 5/6)

### Open & Amateur Futurities

**\$200 nomination fee - \$150 Prospect**

*includes all classes in division.*

*Buckles, sashes and banners to Champions, Res.  
 Champion prizes, sashes and banners, fancy ribbons  
 through 10th. Ranch Suitability is one pattern class  
 including ranch riding and ranch trail (scored separately).*

108. Futurity (5/6) - Ranch Suitability Open
109. Futurity (5/6) - Ranch Suitability Amateur
110. Futurity (3/4) - Ranch Suitability Open
111. Futurity (5/6) - Ranch Rail Open
112. Futurity (5/6) - Ranch Rail Amateur
113. Futurity (3/4) - Ranch Rail Open
114. Futurity (5/6) - Ranch Conformation Open
115. Futurity (5/6) - Ranch Conformation Amateur
116. Futurity (3/4) - Ranch Conformation Open

## CHERIE VONADA MEMORIAL RANCH TRAIL GAMBLERS CHOICE

**Thursday 10/16 2-4p on ranch trail course. \$45 entry. Open to all exhibitors. Choose your own ranch trail course. First 10 obstacles judged. Silver awards & sashes to top Open, Amateur & Youth runs. Medals thru 6th. Register on Special Events form.**

## RANCH WORK TEAM CHALLENGE

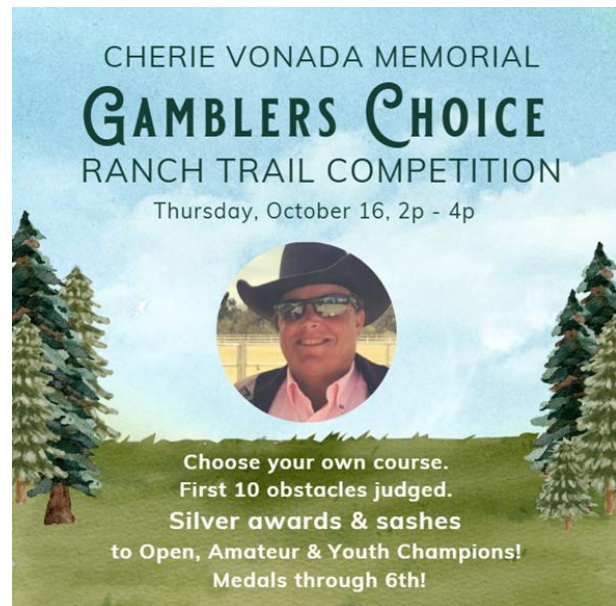
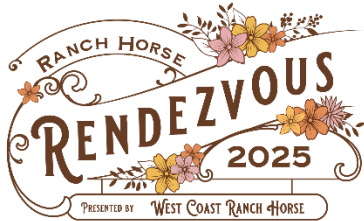
**Begins 5pm on Friday, 10/17. Open, Amateur & Youth Divisions with Buckles. \$100/team. Teams of two are judged on their ability to navigate simulated ranch tasks efficiently such as roping, trailer loading, fence building/repair, covering ground in the pasture, dragging calves to the branding fire, working gates, etc. Spectators welcome - live music, food truck & bar.**

**[www.westcoastranchhorse.com](http://www.westcoastranchhorse.com)**



# THURSDAY 10/16

## SPECIAL EVENTS







**BUCKLES! BANNERS! SASHES!**  
**HUGE RIBBONS THRU 10TH!**  
**RANCH SUITABILITY CLASSES!**

## LINDSAY JEROME MEMORIAL MATURITY & FUTURITY DAY

### Friday 10/17 classes: (8am start)

101. Maturity (7&O) - Ranch Horse Suitability Open
102. Maturity (7&O) - Ranch Horse Suitability Amateur
103. Maturity (7&O) - Ranch Rail Open
104. Maturity (7&O) - Ranch Rail Amateur
105. Ranch Prospect (2&U) - In-hand Ranch Trail
106. Ranch Prospect (2&U) - Longe Line
107. Ranch Prospect (2&U) - Conformation

## RANCH HORSE FUTURITIES (PROSPECT, 4&UNDER, 5/6)

### Open & Amateur Futurities

**\$200 nomination fee - \$150 Prospect**

*includes all classes in division.*

*Buckles, sashes and banners to Champions; Res. Champion prizes, sashes and banners, fancy ribbons through 10th. Ranch Suitability is one pattern class including ranch riding and ranch trail (scored seperately).*

### OPEN & AMATEUR MATURITIES

**\$150 nomination fee**

*includes all classes in division.*

*Buckles, sashes and banners to Champions, Res. Champion prizes, sashes and banners, fancy ribbons thru 10th.*

**Ranch Suitability is one pattern class including ranch riding and ranch trail (scored seperately).**

108. Futurity (5/6) - Ranch Suitability Open
109. Futurity (5/6) - Ranch Suitability Amateur
110. Futurity (3/4) - Ranch Suitability Open
111. Futurity (5/6) - Ranch Rail Open
112. Futurity (5/6) - Ranch Rail Amateur
113. Futurity (3/4) - Ranch Rail Open
114. Futurity (5/6) - Ranch Conformation Open
115. Futurity (5/6) - Ranch Conformation Amateur
116. Futurity (3/4) - Ranch Conformation Open

## CHERIE VONADA MEMORIAL RANCH TRAIL GAMBLERS CHOICE

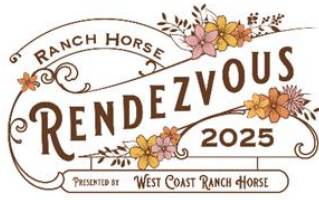
**Thursday 10/16 2-4p on ranch trail course. \$45 entry. Open to all exhibitors. Choose your own ranch trail course. First 10 obstacles judged. Silver awards & sashes to top Open, Amateur & Youth runs. Medals thru 6th. Register on Special Events form.**

## RANCH WORK TEAM CHALLENGE

**Begins 5pm on Friday, 10/17. Open, Amateur & Youth Divisions with Buckles. \$100/team. Teams of two are judged on their ability to navigate simulated ranch tasks efficiently such as roping, trailer loading, fence building/repair, covering ground in the pasture, dragging calves to the branding fire, working gates, etc. Spectators welcome - live music, food truck & bar.**

**[www.westcoastranchhorse.com](http://www.westcoastranchhorse.com)**



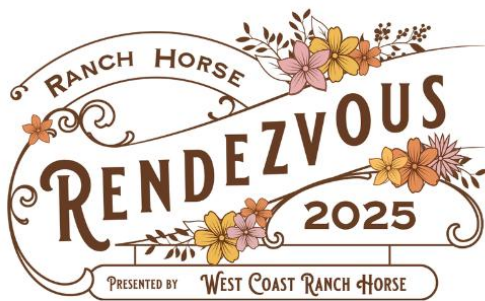


FRIDAY  
10/17  
SPECIAL  
EVENTS

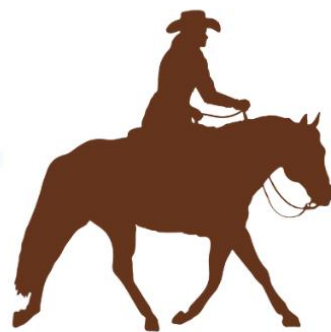
Do you have what it takes? Our Ranch Work Team Challenge will test your team's ranching skills on a variety of SIMULATED ranch tasks! Get your rope and get ready to get ranchy!

Grab a partner and get signed up on the Rendezvous Special Events form! Open, Amateur & Youth divisions with 6 buckles awarded! Must enter as a team, there will not be a draw for partners. This event will be the highlight of Friday evening at the Rendezvous. Mike Scully & his band will be entertaining with soulful country music, food trucks will be cooking up grub, there will be plenty of shopping and we will have a cash bar! Plan for a fun night! Spectators welcome!





# WEEKEND RANCH HORSE SHOW



## Saturday 10/18 Class List (8:00am start)

### AQHA Approved Special Event

\$35/judge per WCRH class pre-entry by 10/6, otherwise \$40/class  
\$50/stakes class. AQHA classes \$20/judge

- |                                                                |                                                |
|----------------------------------------------------------------|------------------------------------------------|
| 201. Ranch Rail - Open/AQHA Open                               | 224. Ranch Trail - Open/AQHA Open/Stakes       |
| 202. Ranch Rail - Amateur/AQHA Amateur                         | 225. Ranch Trail - Amateur/AQHA Amateur/Stakes |
| 203. Ranch Rail - Amateur Limited/AQHA L1 Am                   | 226. Ranch Trail - Amateur Ltd/AQHA L1 Am      |
| 204. Ranch Rail - Amateur Select/AQHA Select                   | 227. Ranch Trail - Am Select/AQHA Am Select    |
| 205. Ranch Rail - Youth /AQHA Youth                            | 228. Ranch Trail - Youth /AQHA Youth/Stakes    |
| 206. Ranch Rail - Green Horse (WTL)                            | 229. Ranch Trail - Green Horse/AQHA L1 Open    |
| 207. Ranch Rail - Green Horse (WT)                             | 230. Ranch Trail - Green Horse (WT)            |
| 208. Ranch Rail - Green Rider (WT)                             | 231. Ranch Trail - Green Rider (WT)/Stakes     |
| 209. Ranch Rail - Youth (18&U WT)                              | 232. Ranch Trail - Youth W/T                   |
| 210. Ranch Rail - Short Stirrup (10&U)                         | 233. Ranch Trail - Short Stirrup (10&U, WT)    |
| 211. Ranch Rail Stakes Class - Non-Pro                         |                                                |
| 212. Ranch Rail Stakes - 'Never Won a Buckle'                  |                                                |
| 213. Mikey Harchol Memorial Open Disciplined Rail Buckle Class |                                                |
| 214. Ranch Riding - Short Stirrup (10&U)                       |                                                |
| 215. Ranch Riding - Youth WT (18&U)                            |                                                |
| 216. Ranch Riding - Green Rider (WT)                           |                                                |
| 217. Ranch Riding - Green Horse (WT)                           |                                                |
| 218. Ranch Riding - Open/AQHA Open                             |                                                |
| 219. Ranch Riding - Amateur/AQHA Amateur                       |                                                |
| 220. Ranch Riding - Amateur Limited/AQHA L1 Amateur            |                                                |
| 221. Ranch Riding - Amateur Select (50&O)/AQHA Am Select       |                                                |
| 222. Ranch Riding - Youth (18&U)/AQHA Youth                    |                                                |
| 223. Ranch Riding - Green Horse (WTL)/AQHA L1 Open             |                                                |

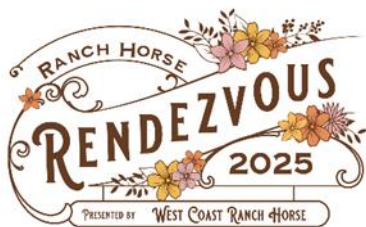
*Work-at-will trail 8am - 2p*

## Thank you to our sponsors!



Register online at [www.westcoastranchhorse.com](http://www.westcoastranchhorse.com)





SATURDAY  
10/18  
SPECIAL  
STAKES  
CLASS

**Mikey Harchol**

**Memorial Open Disciplined  
Ranch Rail Stakes**

Class held October 18th  
\$500 Hayes Hat Co certificate, Molly's Custom Silver  
Buckle & Neck Sash to Champion. Prizes through 7th

**Chris Slauson**

**Memorial Open  
Ranch Rail Stakes**

Class held October 18th  
Silver Trophy Cup & Neck Sash to winner.  
Prizes through 7th. Sponsor: Dana Plowman & The Puzzle Effect

SUNDAY  
10/19  
SPECIAL  
STAKES  
CLASS

## SATURDAY 10/18 PM EVENING EVENTS

A purple poster for the 'RENDZVOUS COSTUME CONTEST'. It features a large full moon in the center with a silhouette of a horse and rider. The text 'RENDZVOUS COSTUME CONTEST' is at the top in large, stylized letters. Below the moon, it says 'SAT. 10/18' on the left and 'AROUND DUSK' on the right. At the bottom, there is a paragraph of text about the contest.

**RENDZVOUS  
COSTUME  
CONTEST**

**SAT.  
10/18** **AROUND  
DUSK**

Halloween is approaching! Come dressed to impress in your scariest, cutest, or most original costumes with your horse! Best overall \$100 and best group costume prizes also!

Parade in covered arena preceding freestyle competition immediately following show day. Approx. start time 5:30p. Free to participate., WCRH membership req'd. Spectators welcome.

A poster for 'Ranch Riding Freestyle'. It shows two riders on horses, one in a dark costume with orange accents and the other in a white and yellow costume, both performing in a dark arena with spotlights. The title 'Ranch Riding Freestyle' is written in a yellow cursive font. Below it, the date and time are listed, followed by the divisions and a note about music and costumes.

*Ranch Riding Freestyle*

10/18 pm - starts around 5:30pm (covered arena)  
Open, Amateur & Youth Divisions  
Buckles to champions! Music required, costumes optional.

A poster for 'RENDZVOUS Dinner'. It features a large, dark brown oval with the word 'RENDZVOUS' in white serif font and 'Dinner' in white cursive font. Below the oval, the date 'SATURDAY - OCT 18TH' is written in a bold, serif font, followed by 'New Format!' in a cursive font. At the bottom, there are two paragraphs of text describing the evening's events.

**RENDZVOUS  
Dinner**

**SATURDAY - OCT 18TH**  
*New Format!*

5:00pm (Covered Pen): Cocktail Hour featuring Ranch Riding Freestyle, Costume Contest & Parade!

7:00pm (Western Town): Catered dinner, live music from Brian Gaylord & the Country Star Band + silent auction



# WEEKEND RANCH HORSE SHOW



## Sunday 10/19 Class List (8am start):

\$35/judge per WCRH class pre-entry by 10/6, otherwise \$40/class  
\$50/stakes class. AQHA classes \$20/judge

\*\*\*Conformation is double judged

- |                                                |                                                                                             |
|------------------------------------------------|---------------------------------------------------------------------------------------------|
| 301. Ranch Conformation - Open                 | 326. Ranch Riding - Short Stirrup (10&U)                                                    |
| 302. Ranch Conformation - Amateur              | 327. Ranch Riding - Youth (18&U) WT                                                         |
| 303. Ranch Conformation - Am Limited           | 328. Ranch Riding - Green Rider (WT)                                                        |
| 304. Ranch Conformation - Am Select (50&O)     | 329. Ranch Riding - Green Horse (WT)                                                        |
| 305. Ranch Conformation - Youth (18&U WTL)     | 330. Ranch Riding - Open/AQHA Open                                                          |
| 306. Ranch Conformation - Green Horse (WTL)    | 331. Ranch Riding - Amateur/AQHA Amateur                                                    |
| 307. Ranch Conformation - Green Horse (WT)     | 332. Ranch Riding - Am Ltd/AQHA L1 Amateur                                                  |
| 308. Ranch Conformation - Green Rider (WT)     | 333. Ranch Riding - Am Select/AQHA Am Select                                                |
| 309. Ranch Conformation- Youth (WT)            | 334. Ranch Riding - Youth (18&U)/AQHA Youth                                                 |
| 310. Concurrent w/above - Short Stirrup (10&U) | 335. Ranch Riding - Green Horse/AQHA L1 Open                                                |
| 311. Ranch Rail - Leadline (8&U)               |                                                                                             |
| 312. Ranch Riding - Leadline (8&U)             |                                                                                             |
| 313. Ranch Rail Stakes - Open                  |                                                                                             |
| Chris Slauson Memorial class                   | Trail is work-at-will from 9A - 2P. Trail stakes classes run concurrent with regular class. |
| 314. Ranch Rail Stakes - Green Rider WT        |                                                                                             |
| 315. Ranch Rail Stakes - Green Horse WTL       | Work-at-will trail 8am - 2p                                                                 |
| 316. Ranch Rail - Open/AQHA Open               | 336. Ranch Trail - Open/AQHA Open                                                           |
| 317. Ranch Rail - Amateur/AQHA Amateur         | 337. Ranch Trail - Amateur/AQHA Amateur                                                     |
| 318. Ranch Rail - Amateur Limited/AQHA L1 AM   | 338. Ranch Trail - Am Ltd/AQHA L1 Am                                                        |
| 319. Ranch Rail - Amateur Select/AQHA Select   | 339. Ranch Trail - Am Select/AQHA Am Select                                                 |
| 320. Ranch Rail - Youth /AQHA Youth            | 340. Ranch Trail - Youth /AQHA Youth                                                        |
| 321. Ranch Rail - Green Horse (WTL)            | 341. Ranch Trail - Green Horse/AQHA L1 Open                                                 |
| 322. Ranch Rail - Green Horse (WT)             | 342. Ranch Trail - Green Horse (WT)                                                         |
| 323. Ranch Rail - Green Rider (WT)             | 343. Ranch Trail - Green Rider (WT)/Stakes                                                  |
| 324. Ranch Rail - Youth (18&U WT)              | 344. Ranch Trail - Youth (18&U WT)                                                          |
| 325. Ranch Rail - Short Stirrup (10&U)         | 345. Ranch Trail - Short Stirrup (10&U WT)                                                  |
|                                                | 346. Ranch Trail - Leadline (8&U)                                                           |

**DIVISION BUCKLES**

**AWARDS THRU 8TH**

**RIBBON RAFFLE 1ST - 10TH**



**TOP HAND \$1000**

**DAILY HIGH POINTS**

**CHAMPION PRIZES**

Register online at [www.westcoastranchhorse.com](http://www.westcoastranchhorse.com)

# LIVE MUSIC AT THE RENDEZVOUS

THURSDAY 6:30PM (BONFIRE AREA)

Join **Sami & George Hernandez** for a jam session around the campfire. Bring your singing voices, your guitar, a dish to share and your appetite! Free for exhibitors.

FRIDAY 5:00PM

(COVERED ARENA)

**Mike Scully** and his band will entertain while exhibitors grab a bite to eat from the food vendors & watch the exciting Ranch Work Team Challenge! Spectators welcome!



SATURDAY 7:00PM  
(WESTERN TOWN)



**Bryan Gaylord & the Country Star Band** will take the stage during our Rendezvous dinner! Enjoy delicious BBQ, shop Winchester Western and the WCRH Silent Auction while enjoying live music on the stage! Ticketed event.

# RENDEZVOUS VENDORS

Public Welcome



Show Equipment



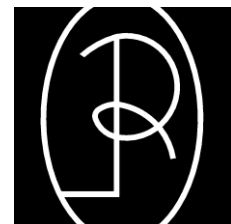
*the Cow Lot*  
HAND SHAPED COWBOY HATS



**Cow Dog  
Saddles**

& more ....

Pretty Real Leather





# THANK YOU TO THE 2025 RENDEZVOUS SPONSORS!



Ashley Lavelle Hoagland  
CalDRE Lic #01309946 | Realtor®  
951.764.8909  
www.myhorsepropertiespecialist.com  
COLDWELL BANKER | ASSOCIATED BROKERS REALTY







# WAYS TO WIN!

**Top Hand Champion Award (Sponsored by Winchester Western) :** The Top Hand buckle, \$1000 check and neck sash are awarded to the rider/horse combo with the most cumulative points in the weekend show (Saturday/Sunday) overall according to the live show point schedule. All placings (by points) to count.

**Top Hand Reserve Champion Award:** The Top Hand Reserve Champion Silver and Turquoise Rendezvous pendant and neck sash are awarded to the rider/horse combo with the second most cumulative points in the weekend show (Saturday/Sunday) overall according to the live show point schedule. All placings (by points) to count.

**Youth Top Hand Award:** The Youth Top Hand Champion buckle and neck sash are awarded to the youth rider/horse combo with the most cumulative points in the weekend show (Saturday/Sunday) overall according to the live show point schedule. All placings (by points) to count.

**Division Champion Buckles:** Silver belt buckles will be awarded to the horse/rider combination with the highest point totals in each WCRH division for the weekend. All riding classes to count. No placings/scores will be dropped. In order to be eligible to win a division buckle, you must enter all WCRH classes in that division Saturday and Sunday, including conformation. High point divisions include Open, Amateur, Amateur Select, Amateur Limited, Green Rider, Short Stirrup, Green Horse, Green Horse WT, Youth WT and Youth.

**Reserve Champion Division Awards:** Reserve Champion Saddle Blankets will be awarded to the horse/rider combination with the second highest point totals in each WCRH division for the weekend. All riding classes to count. No placings/scores will be dropped. In order to be eligible to win a division award, you must enter all classes in that division Saturday and Sunday, including conformation.

**High Point Conformation Horse:** A leather ranch show halter will be presented to the horse with the highest cumulative total conformation points across all divisions from Saturday and Sunday. Multiple handlers may show the horse in multiple divisions.

**Leadline Buckles:** Champion and Reserve Champion belt buckles will be awarded to the leadliners with the highest point totals. Leadline classes are offered Sunday only. No placings/scores will be dropped. To be eligible to win a division buckle, you must enter all WCRH classes in leadline division Sunday (Ranch Rail, Ranch Riding and Ranch Trail).

**Daily Overall High Point Awards:** Trophy halters will be awarded to the horse/rider combinations with the highest daily cumulative point totals on both Saturday and Sunday. All classes to count. No placings will be dropped.

**Daily Green Rider/Youth High Point Awards :** Fall hay bags will be awarded to the horse/rider combination with the highest daily cumulative point totals on Saturday and Sunday. Riders must be 18&under or in their 1st/2nd year showing in ranch classes. All classes to count. No placings will be dropped.

*Ties for high point awards will be broken by the number of first place placings, then second, then third, then fourth. If there is still a tie, it will be broken by a coin toss.*

**Ranch Riding Daily High Score Award:** A prize will be awarded to the rider with the highest overall ranch riding score across all divisions for Saturday and Sunday. Judge will break any ties.

## LINDSAY JEROME MEMORIAL MATURITY & FUTURITY AWARDS

**Futurity & Maturity Champion Awards:** Silver belt buckles, neck sashes and award signs will be awarded to the horse/rider combinations with the highest point totals in each division for each futurity & maturity event. All classes to count. In order to be eligible to win, you must show in all classes in that event.

**Futurity & Maturity Reserve Champion Awards:** Neck sash and horse statue trophy will be awarded to the horse/rider combinations with the second highest point totals in each WCRH division for each futurity & maturity event. All classes to count. No placings/scores will be dropped. In order to be eligible to win, you must show in all classes in that event.

Fancy ribbons and prizes will be given to **3rd through 10th** place based awarded based on cumulative point totals for the each futurity & maturity (neck sash to 3rd). No individual class ribbons Friday.

## SPECIAL CLASS AWARDS

**Mikey Harchol Memorial Disciplined Rail Stakes:** Open to all riders and horses. Custom buckle, \$500 Hayes Hat Co certificate, and neck sash to winner. Prizes through at least 7th.

**Cherie Vonada Memorial Ranch Trail Gamblers Choice Competition:** Silver platters to top score Open, Amateur & Youth riders. Medals through 6th.

**Chris Slauson Memorial Open Ranch Rail Stakes:** Open to all riders and horses. A silver trophy cup, saddle blanket, neck sash and 50% payback future show credit will be awarded to the judge's top placing rider. Reserve champion rosette & saddle blanket. Prizes through at least 7th place.

**Ranch Rail Stakes Classes:** Buckle or other prize and neck sash will be awarded to the judge's top placing rider. Reserve champion rosette & award to reserve champion. Prizes through at least 6th place.

**'Never Won a Buckle' Ranch Rail Stakes:** Open to all riders who have never won a buckle in an equestrian under saddle class/event. Silver buckle and neck sash will be awarded to the judge's top placing rider. Reserve champion rosette & award to Reserve Champion. Prizes through at least 6th place.

**Open Ranch Trail Stakes:** Open to all riders and horses. Trophy gear bag and neck sash will be awarded to the judge's top placing rider. Reserve champion rosette & award to Reserve Champion. Prizes through at least 6th place.

**Amateur Ranch Trail Stakes (Sponsored by Ranch Horse Supply):** Open to all non-professional riders. Romel reins and neck sash will be awarded to the judge's top placing rider. Prize and rosette to Reserve Champion. Prizes through at least 6th place.

**Green Rider Ranch Trail Stakes :** Open to all riders in their 1st or 2nd year showing in ranch horse. Trophy cooler and neck sash will be awarded to the judge's top placing rider. Saddle blanket and rosette to Reserve Champion. Prizes through at least 7th place.

**Freestyle Ranch Riding Contest:** Buckles to Open, Amateur & Youth Champions. People's Choice award trophy

**CLASS AWARDS WILL BE AWARDED FOR WCRH CLASS CHAMPIONS! RANDOM SILVER PLATTER CLASSES!**  
**CIRCUIT AWARDS FOR ALL WEEKEND SHOW CLASSES (MUST SHOW TWICE)!**

\*AQHA classes are points only. \*WCRH reserves the right to substitute awards and prizes of comparable value based on availability.



SEE YOU  
AT THE  
RENDEZVOUS!



WWW.WESTCOASTRANCHHORSE.COM