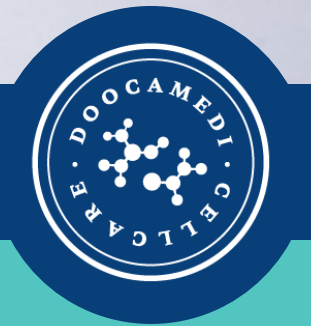




BIO TECHNOLOGY



Premium
Health and Wellness Products
for Pets

- Pet Health Products (Non-Medicinal)
- Veterinary Medical Devices
- Veterinary Nutritional Products

DOOCAMEDI

Introduction to DOOCA Medi

BRAND STORY

Advanced Bio Technology for your pet

Bringing Bio Technology & Ingredients into Everyday Life – DOOCA

Why?

Why Hasn't Bio Technology Been for Pets Until Now?

Most advancements in bio-research and development have always focused on humans. At DOOCA, we envisioned a world where these innovative technologies could also benefit our beloved pets. By applying cutting-edge bio technology to pet care, we aim to provide more scientific and fundamental solutions, creating a happier world for both pets and their owners. This vision gave birth to DOOCA.

Introduction to DOOCA Medi

Technology that benefits humans can also be applied to improve the lives of pets

 **DOOCA**MEDI



 **DOOCA** MEDICAL CENTER



 **DOOCA** CELLBANK



“ We are a "Premium Pet Healthcare Brand" offering next-generation total bio solutions for pets. ”

DOOCA provides comprehensive care for pets through innovative solutions such as **DOOCA Medi**, a line of pet healthcare products enriched with stem cell culture fluid; **DOOCA Cell Bank**, a stem cell storage solution for pets; and the **DOOCA Medical Center**, a premium veterinary clinic specializing in health check-ups, immune cell banking, and stem cell therapy.

CellCare Mist

Volume 100ml / 500ml

DOOCA Medi's Best Seller!

The ultimate all-in-one mist for coat and skin care, formulated with stem cell culture fluid and bio-specialized ingredients in the optimal ratio.



Stem Cell Culture Fluid

A symbol of regenerative power, enriched with plant-based stem cell culture fluid, EGF, and peptides.



Remarkable Hydration & Soothing

Formulated with natural-derived ingredients and stem cell bio-actives for flawless hydration and calming effects.



Daily Mist

A non-sticky formula for a smooth, tangle-free coat – perfect for daily use.



A Gentle, Subtle Scent

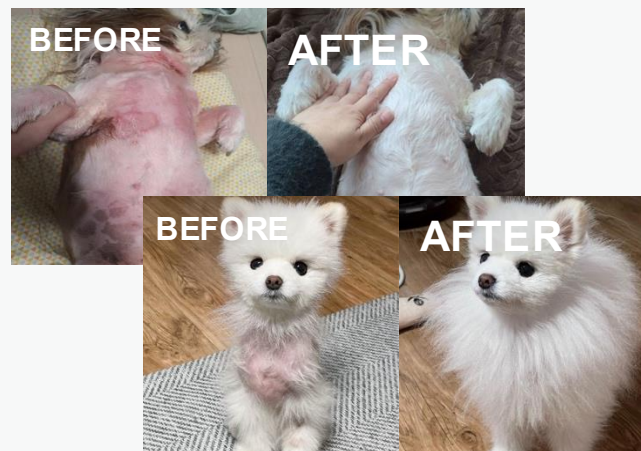
Free from allergies, irritation, and sneezing.



Equipped with a Fine Mist Spray Tip

Effectively penetrates the skin and improves coat care

REVIEW



CellCare EyeDrop 1ml (Single-use)

Volume

1ml (30units/10units)

The First in Korea

"Exclusively Designed EyeDrops & ArtificialTears for Pets"



Provides hydration and forms a protective barrier for the eyes



Cleanses the eyes and removes foreign substances



Suitable for storage at room temperature



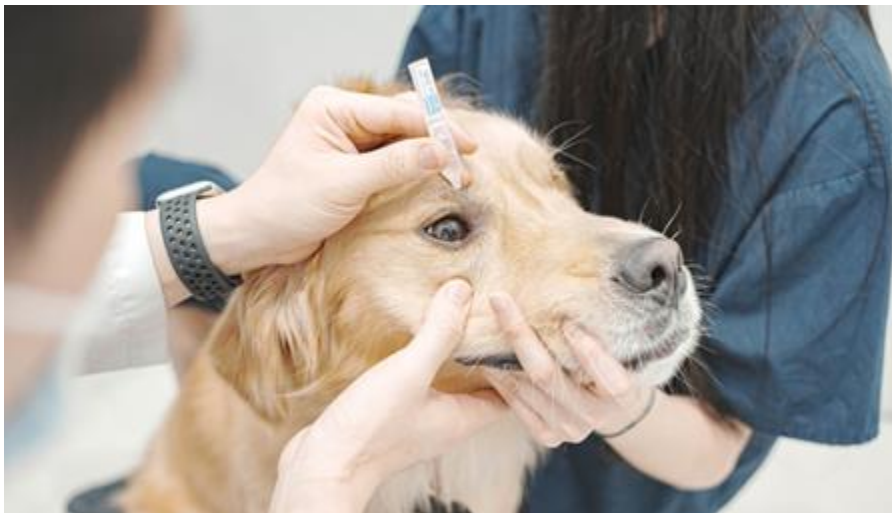
Helps reduce tear stains



Inhibits bacterial growth in the eyes



Ensures clean and hygienic use



CellCare EyeDrop 1ml (Single-use, For cat)

Volume

1ml (30units/10units)

Gentle with the Same Ingredients as Artificial Tears

Optimized for Pet's pH Levels to Enhance Effectiveness

"Exclusively Designed EyeDrops & ArtificialTears for Cats"



Provides hydration and forms a protective barrier for the eyes



Cleanses the eyes and removes foreign substances



Suitable for storage at room temperature



Helps reduce tear stains



Inhibits bacterial growth in the eyes



Ensures clean and hygienic use



CellCare EyeDrop 15ml (Multi-use)

Volume 15ml

Gentle with the Same Ingredients as Artificial Tears

Optimized for Pet's pH Levels to Enhance Effectiveness
Specialized Eye Care Solutions for Pets



Provides hydration and forms a protective barrier for the eyes



Cleanses the eyes and removes foreign substances



Helps reduce tear stains

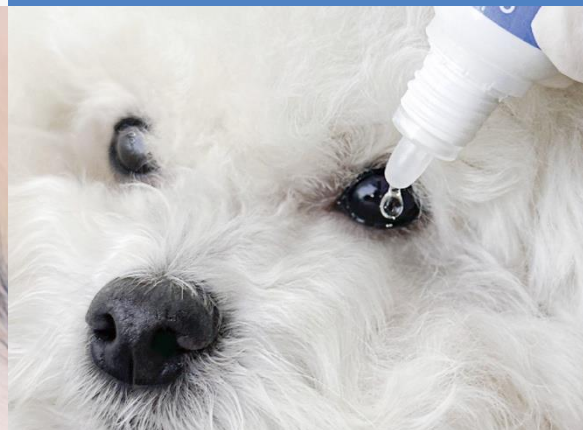


Inhibits bacterial growth in the eyes



Human tear pH level

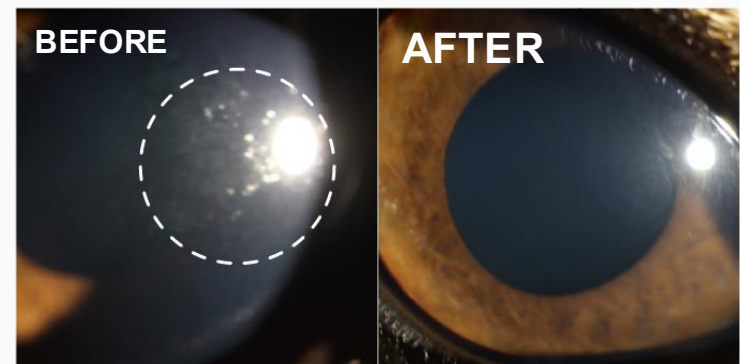
pH 7.3~7.7



Dog tear pH level

pH 8.0~8.5

Increased corneal epithelium healing rate



CellCare EyeCle

Volume 150ml

Formulated with specialized stem cell bio-actives for gentle and effective eye care with a pump-type dispenser.
Formulated with specialized stem cell bio-actives for gentle and effective eye care, featuring a convenient pump dispenser.



Stem Cell Culture Fluid



A symbol of regenerative power, enriched with plant-based stem cell culture fluid, EGF, and peptides.

Eye Area Care



Improves the skin barrier for fundamental eye area care with hyaluronic acid and ceramide, commonly used in artificial tears

Deodorizing & Tear Stain Care



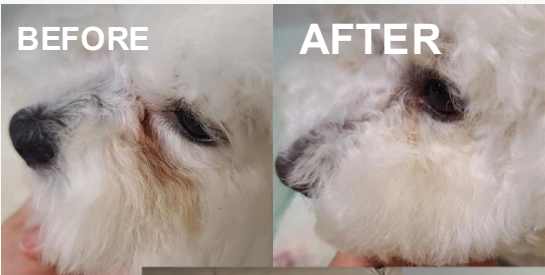
Harnesses the antibacterial properties of houttuynia cordata and the powerful yet safe deodorizing effects of cyclodextrin.

One-Touch Pump Dispenser



A convenient pump-type bottle for easy use with cotton pads, enabling simple, one-handed eye cleansing.

REVIEW



CellCare EarCle

Volume 100ml

Infused with phytoncide water and hot spring water, combined with stem cell bio-actives, this gentle cleanser ensures safe and effective ear care with DOOCA Medi's patented silicone tip.



Stem Cell Culture Fluid



A symbol of regenerative power, enriched with plant-based stem cell culture fluid, EGF, and peptides.

3 Water Complex



Formulated with 60% blend of Hinoki water, hot spring water, and Houttuynia cordata extract

Mild and Safe Ingredients



Formulated with Hinoki water and hot spring water, free from surfactants for gentle, non-irritating care.

Patented Silicone Tip



Equipped with a replaceable silicone tip for safe and gentle ear cleansing without causing irritation or injury.

REVIEW



CellCare Cream

Volume 30g

Maintains moisture balance with skin-hydrating ingredients, offering non-sticky, intensive hydration. Perfect for dry, cracked paw pads.

Nano-sized Centella Exosomes & Purslane Exosomes
Ensures excellent absorption and smooth application.



Stem Cell Culture Fluid



A symbol of regenerative power, enriched with plant-based stem cell culture fluid, EGF, and peptides.

Plant-Based Exosomes



Nano-sized plant exosomes ensure excellent absorption and smooth application.

Remarkable Hydration & Soothing



Formulated with natural-derived ingredients and stem cell bio-actives for seamless hydration and calming care.

Gentle, Subtle Fragrance



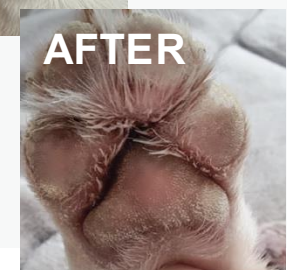
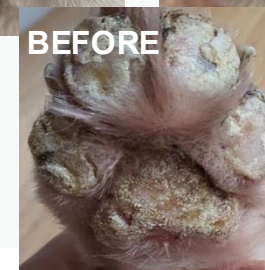
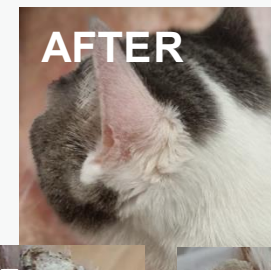
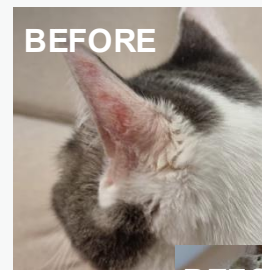
Leaves no lingering scent, ensuring an allergy-free and irritation-free experience without triggering sneezing.

Redness Relief & Skin Barrier Strengthening



A synergistic blend of key ingredients, nano-ceramides, and 10 types of vitamins helps soothe redness and reinforce the skin barrier.

REVIEW



CellCare Walk

Volume

100ml / 500ml

Infused with natural essential oils, this mist protects your pet during walks and outdoor activities while providing gentle coat care.



Stem Cell Culture Fluid



A symbol of regenerative power, enriched with plant-based stem cell culture fluid, EGF, and peptides.

Insect-Detering Mist



Effectively deters insects with natural essential oils that insects dislike, ensuring a safe and gentle protection.

Non-Sticky Formula



A lightweight, non-sticky mist that prevents coat tangling, perfect for daily walks.

No Sneezing



The subtle, natural essential oil scent is gentle enough to prevent sneezing—safe for spraying on your pet's coat.

Soothing & Barrier Strengthening



Formulated with 10% Centella Asiatica extract (100,000 ppm) to calm irritated, reddened skin while strengthening the skin barrier against UV exposure and scratches.

REVIEW



CellCare Shampoo

용량 200g / 1,000g

Achieve gentle and effective exfoliation with next-generation water-soluble ingredients. Antioxidant vitamin capsules deeply revitalize and nourish the coat and skin.



Stem Cell Culture Fluid



A symbol of regenerative power, enriched with plant-based stem cell culture fluid, EGF, and peptides.

4+6+10



A combination of 4 types of peptides, 6 patented ingredients, and 10 vitamins activates stem cell synergy for optimal coat and skin health.

Soft Foam



Reduces harsh ingredients used for cleansing, delivering a rich, gentle lather with a mild and soothing fragrance.

Antioxidant Vitamin Capsules



Deeply revitalizes and nourishes the coat and skin with antioxidant vitamin capsules.

Next-Generation Exfoliating Ingredient: PHA



PHA offers excellent exfoliation while being low-irritation due to its larger molecular size, which prevents deep absorption. Its **water-solubility** ensures easy rinsing for gentle and effective care.

REVIEW



A high-viscosity formula that adheres firmly to teeth and gums for all-in-one oral care, from fresh breath to optimal oral health.



Oral Probiotics



Supports the growth of beneficial oral bacteria with Lactobacillus lysate.

Tartar Control



Helps reduce tartar buildup with chitosan and spirulina extracts.

Gum Health



Improves gum health with allantoin and propolis.

Comprehensive Oral Care



Enhances overall oral condition with plant stem cell culture fluid, lysozyme, and EGF for fundamental oral health improvement.

REVIEW



Made from 100% pure cotton, these dual-textured pads offer versatility to suit various preferences and needs.

•Unbleached, Fluorescent-Free, and Adhesive-Free

Gentle and safe care for your pet’s delicate skin.



유해성분 ZERO

Unbleached, fluorescent-free, adhesive-free, and ZERO harmful ingredients for safe and gentle care.



•100% Pure Cotton
Certified by Cotton Incorporated for premium quality.



WATER JET

•Water-Jet Technology
Reduces lint and dust for a soft, smooth touch.



•Vegan-Certified Fabric
Made with certified materials approved by the Korea Vegan Certification Institute.

Hybrid Texture

Dual-sided with different textures to suit various uses and preferences.



The Seal of Cotton and natural_{TM} are trademarks of Cotton Incorporated.

CellCare Drama: LED

Government-Certified Animal Medical Device(Korea)

A veterinary skin treatment device designed to deliver therapeutic light without obstruction from coat. It features **28 LED-emitting comb teeth** and **4 laser-emitting comb teeth** for effective skin treatment.



•Relieves Pain
and Supports
Skin Healing



Promotes
Cellular
Activation



•Direct
Application to
Skin



•Transparent
Comb Design:
Ensures precise
treatment
through coat to
the skin.



LED + Laser
Combination
Light Source



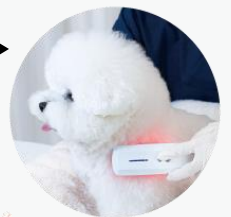
•650nm
Wavelength

DETAIL



Government-Certified
Animal Medical
Device(Korea)

MADE IN KOREA ▶



Cellcare ZeroBlack (For Cats)

Volume 50ml



Stem Cell Bio + Exosome Synergy Complex
Contains 7 patented natural sebum-controlling ingredients. Fragrance-free and fresh texture for fundamental care

Chin & Tail Acne Care · Sebum Control
· Gentle Formula · Soothing Effect

**Stem
Cell Culture
Extract**



Chin Acne Care



Tail Acne Care



**Plant-Based
Exosomes**



**Soothing &
Moisturizing**



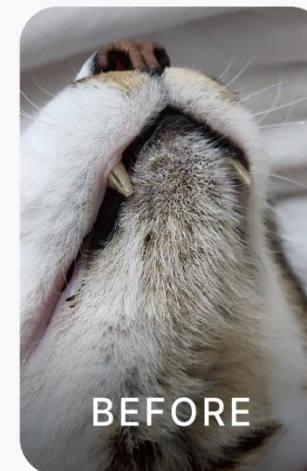
**Sebum
Release**

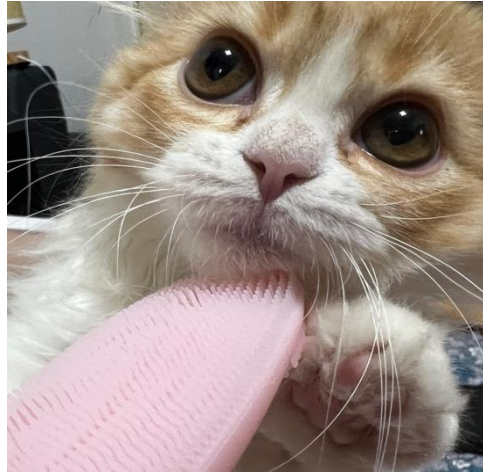


**Convenient and
Hygienic Pump Type**



**Non-Dripping Gel Texture
That Clings to the Chin!**





"Wider, more hygienic, more stable" –
Wide silicone brush that wraps around the
entire finger

**Dual 2mm & 3mm bristle design
gently removes chin acne, sebum,
and dead skin cells without
irritating the skin**



**Soft silicone bristles
optimized for cat
skin**



**Spreads gel-type
products evenly and
effectively**



**Finger-insert design
for a secure and
stable grip**



**Compact and
lightweight – easy to
store and carry**



Front side: 137 bristles

**For small areas,
curves, and crevices**

Back side: 1,167 bristles

**For broader areas and
overall chin acne care**



StemPoint Co., Ltd.

Tel: +82-2-3472-2468 (KakaoTalk: DOOCA Medi)

Head Office: 2801, 2802, OBIZ Tower, 126 Beolmal-ro, Dongan-gu, Anyang-si, Gyeonggi-do, Korea

R&D Center: 216, OBIZ Tower, 126 Beolmal-ro, Dongan-gu, Anyang-si, Gyeonggi-do, Korea

DOOCA Medical Center: 217, OBIZ Tower, 126 Beolmal-ro, Dongan-gu, Anyang-si, Gyeonggi-do, Korea