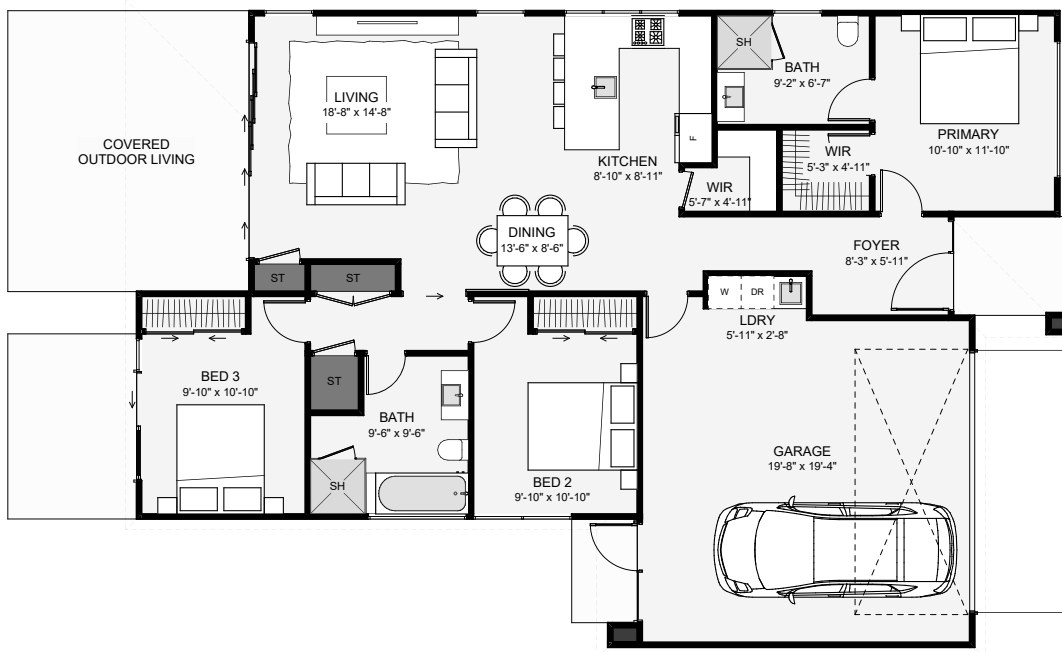




This three-bedroom home has bold styling. The main living inside is an open plan with large sliding doors opening out onto a covered outdoor living space. The primary bedroom is positioned separate from the other rooms and includes a walk-in wardrobe and ensuite. The kitchen has a walk-in pantry. The double garage includes a countersunk laundry and access outside. If you are looking for a three-bedroom home with a strong presence that's truly timeless, you've just found it!



Floor Area: 1,636 sf

 2
  3
  2
  1
  55'-6"
  38'-3"