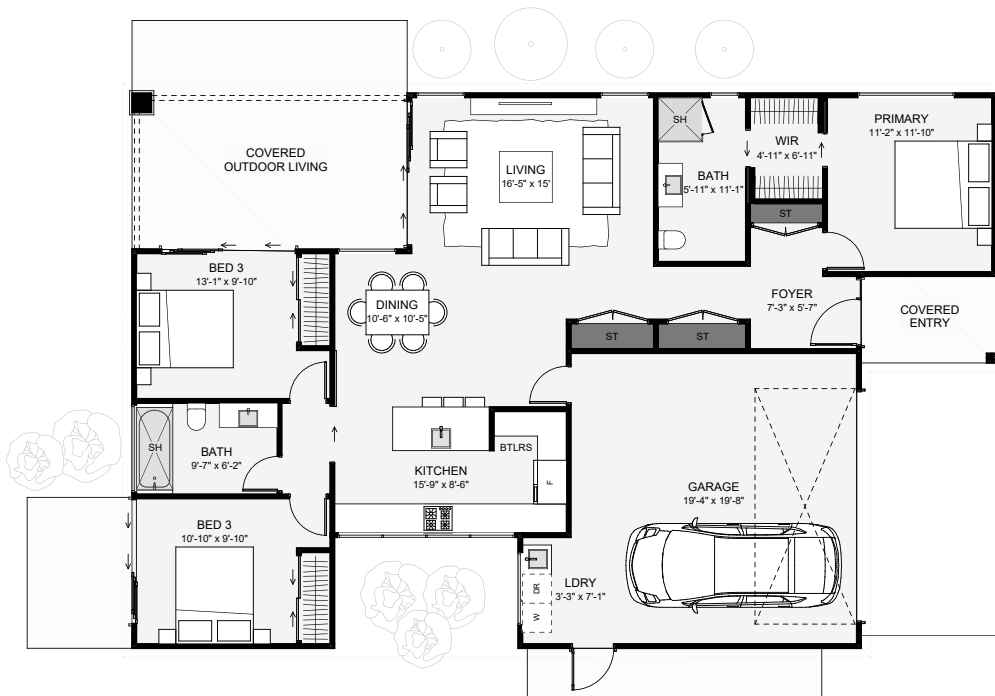




The open-plan living inside this home is offset, so the lounge is slightly privatized from the kitchen and dining. The master is positioned separately from the other rooms for increased privacy. The kitchen includes an open-style pantry that's cleverly hidden. This home can easily change its style just by applying different colors of weatherboards and brick: dark for modern, light for a more classic look.



Floor Area: 1,679 sf

2  
 3  
 2  
 1  
 58'-6"  
 37'-7"