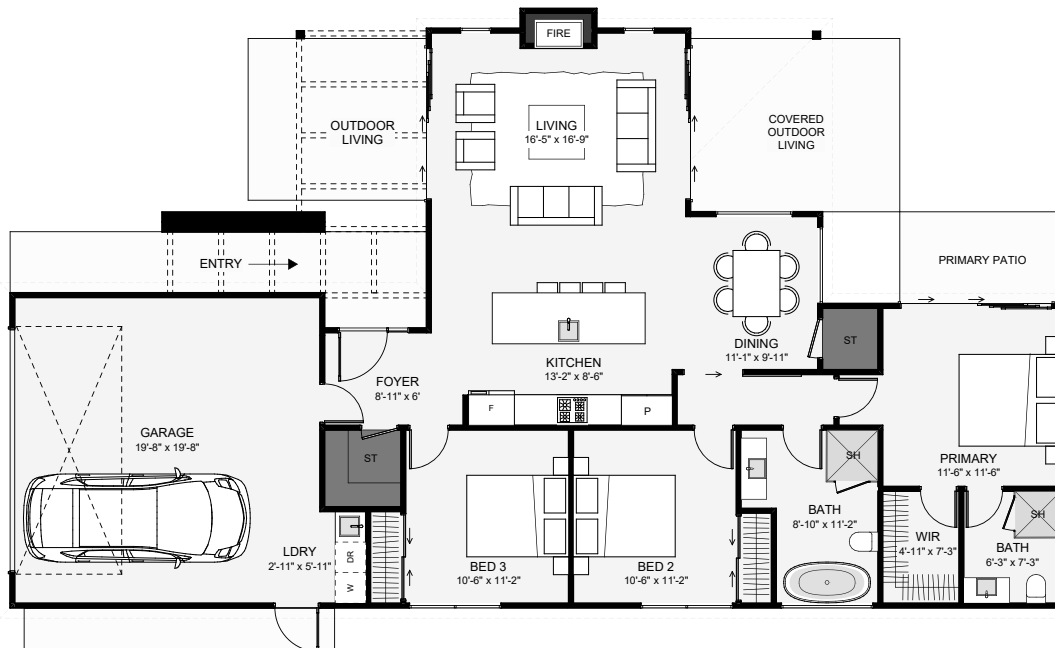
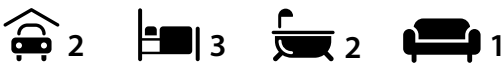




The shape of this home maximizes its outdoor living space. Inside, the living room extends out from the kitchen so morning and afternoon sun can be enjoyed, creating two outdoor living spaces. The dining is positioned in a cozy nook, allowing for unique ceiling finishes. The master includes an ensuite and walk-in wardrobe; the bathroom can be quickly accessed with its position close to both bedrooms and the living. This home has a sophisticated charm that'll prove timeless in its brick, board, and batten exterior!



Floor Area: 1,690 sf



67'-11" | 38'-7"