

Sell-Out Socket

The Sell-Out Socket allows you to sell beer until the line has been emptied, allowing you to claim additional revenue from product that is otherwise being wasted during line cleaning. The Sell-Out Socket is an exclusive product, not available through any other line cleaning company.

Example of savings:

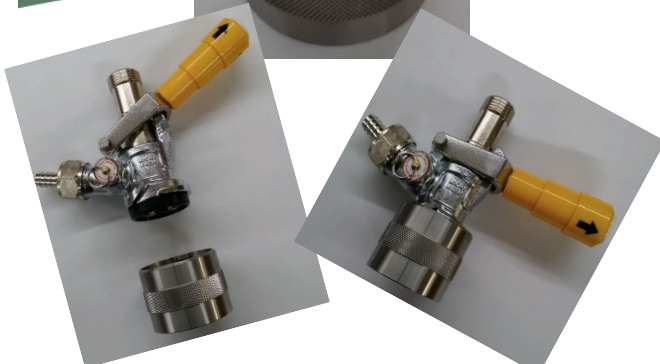
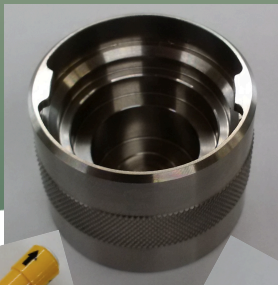
- 10-line beer system with a 100-foot run
- Each line holds 75 oz of beer (appx. 5 glasses)
- Each glass sells for \$5.00

This system would yield roughly 50 glasses of beer, bringing in an additional \$250 that would have been wasted during line cleanings.

Projected savings per cleaning schedule:

- \$250/week x 52 weeks (CT) = \$13,000 additional revenue per year
- \$250/week x 26 weeks (MA & RI) = \$6,500 additional income per year

Ask us for an estimate of your potential savings!



Freel's Draft Service was established in 2006 with a handful of clients in Litchfield County. Today, Freel's Draft Service provides reliable, professional service for over 200 establishments in Connecticut, Rhode Island and Massachusetts.

**FDS is fully insured*



Chris Freel, Owner

Phone: 203.233.7774

E-mail: chris@freelsdraft.com

Web: www.freelsdraft.com

Freel's

DRAFT SERVICE



Our Mission:

***Reduce cost and waste,
Maximize profit and taste***



Comprehensive services for every system

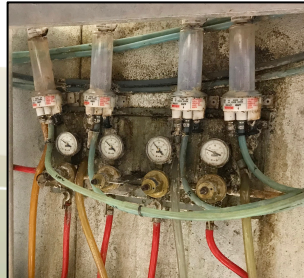
- ◆ Line Cleaning: Beer, Wine, Coffee, Juice (including Kombucha)
- ◆ Gas Services: Beer Gas & Nitro (60/80/122/244cf), CO2 (5/20/50lb)
- ◆ Draft System Repair
- ◆ Preventative Maintenance
- ◆ Exclusive Services: Sell-Out Socket & Bundle Super-Scrub

Line cleaning service includes:

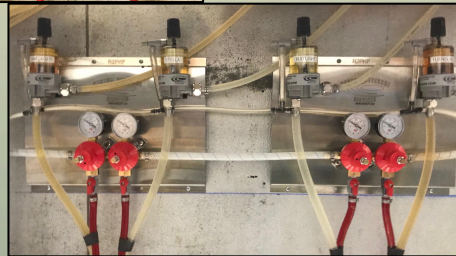
- Chemical line clean using top of the line chemicals, rotated according to Draft Brewers Assoc. guidelines
- As needed, electric line cleaning pump used on glycol systems & long draws (80% more effective than soaking method for long runs)
- Full water rinse of lines (unlike our competitors who use your beer to rinse lines)
- Disassembly and cleaning of faucets and couplers, and replacement of washers (as needed)
- Troubleshooting of beer loss and foaming issues, specializing in inventory control (loss management)

Gas service includes:

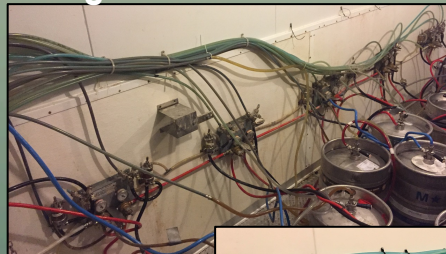
- CO2, Beer Gas, Nitrogen in sizes & quantities that meet the demand of your system
- No additional cost for delivery or tank rental fees. For line cleaning clients
- Gas gauges are monitored weekly by technicians to avoid the need for emergency deliveries and to monitor for signs of leaks



System Repair
New Cooler
Package –
Regulator panels,
FOBS, jumper
lines



Exclusive, Innovative Device
**The Super-Scrub will save most
neglected line bundles**



Refurbished
trunk line
using the
Super-Scrub

Over
\$40,000 in
savings



Join FDS in our mission to **Save the Beer!**

- FDS strictly adheres to Draught Brewers Assoc. line cleaning guidelines for process, and rotation of cleaning solution. Clean lines result in less foam.
This SAVES BEER!
- FDS maximizes your profit margin by never using beer to rinse the cleaning solution from your lines.
This SAVES BEER and related costs from beer waste!
- Saved beer means you have more beer to provide to your customers... and it will taste as the brewer intended!