



TOWN OF CLIFTON GENERAL PLAN

General Plan Map Series Atlas



Where the Trail Begins!



The Planning Center
Tucson Office
2 E Congress, Suite 600
Tucson, Arizona 85701

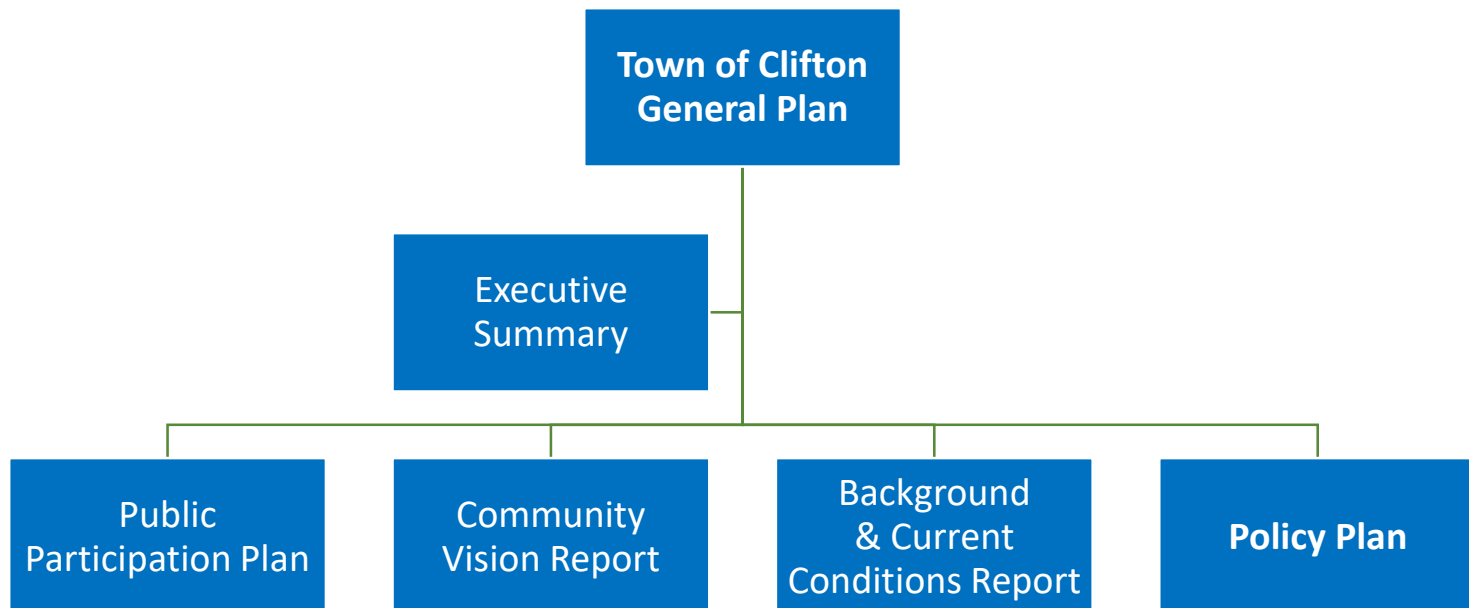
August 15, 2019



TOWN OF CLIFTON GENERAL PLAN

General Plan Map Series Atlas User Guide

General Plan Organization

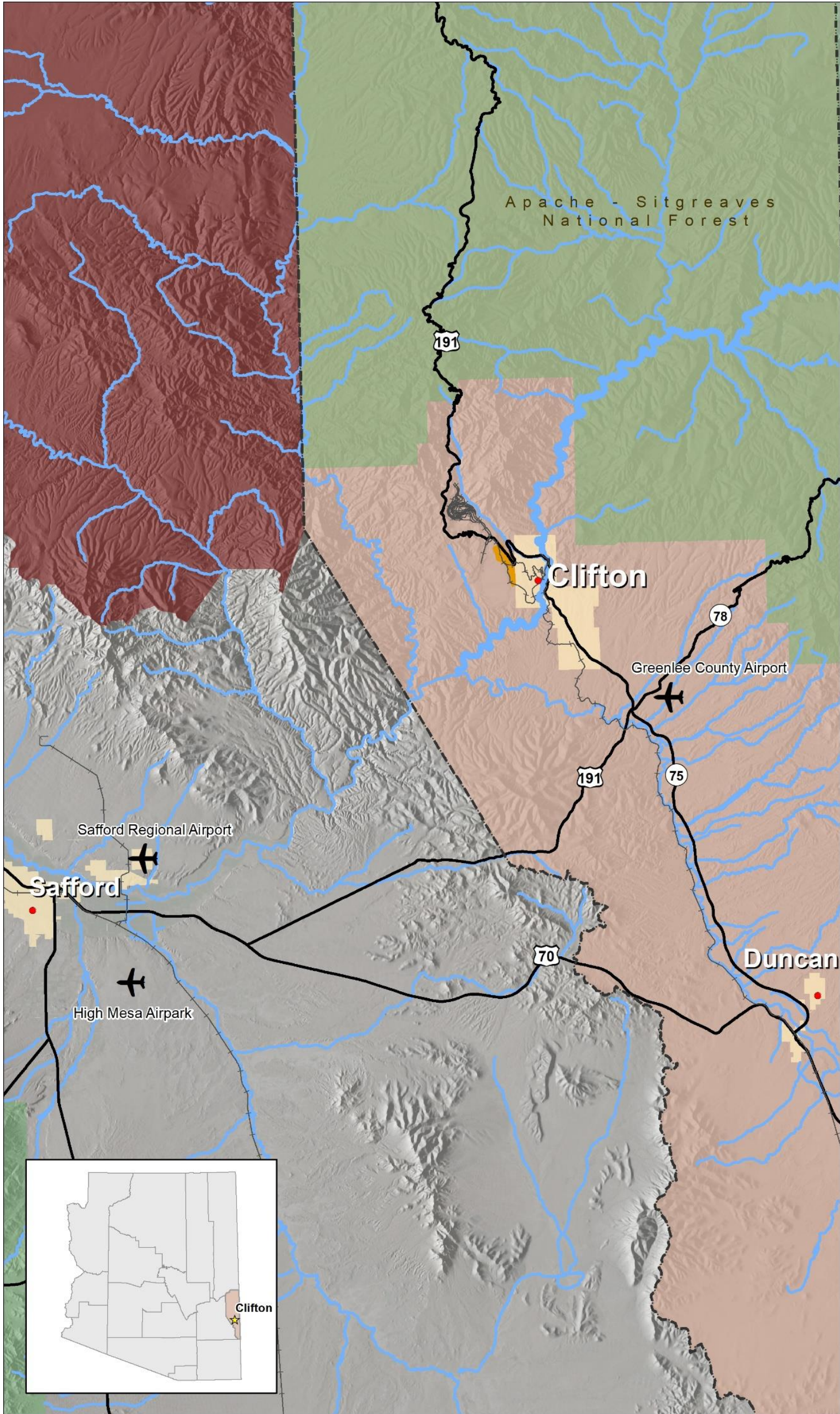


General Plan Map Series Atlas

Comprises all the maps related to the Town of Clifton 2020 General Plan and includes:

- **General Plan Background & Current Conditions Report Maps Series:** This series includes all the maps illustrating background and current conditions mentioned in the Background and Current Conditions Report. These maps are only available in this Atlas.
- **Policy Plan Map Series:** Includes all the maps adopted as part of the General Plan Future Land Use series. These maps are included in the Policy Plan under their corresponding element and in this Atlas for easy reference.





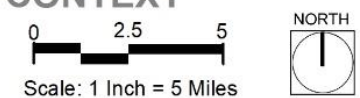
LEGEND

- Jurisdiction
- Morenci
- Greenlee County

- Highway
- ++ Rail
- Rivers

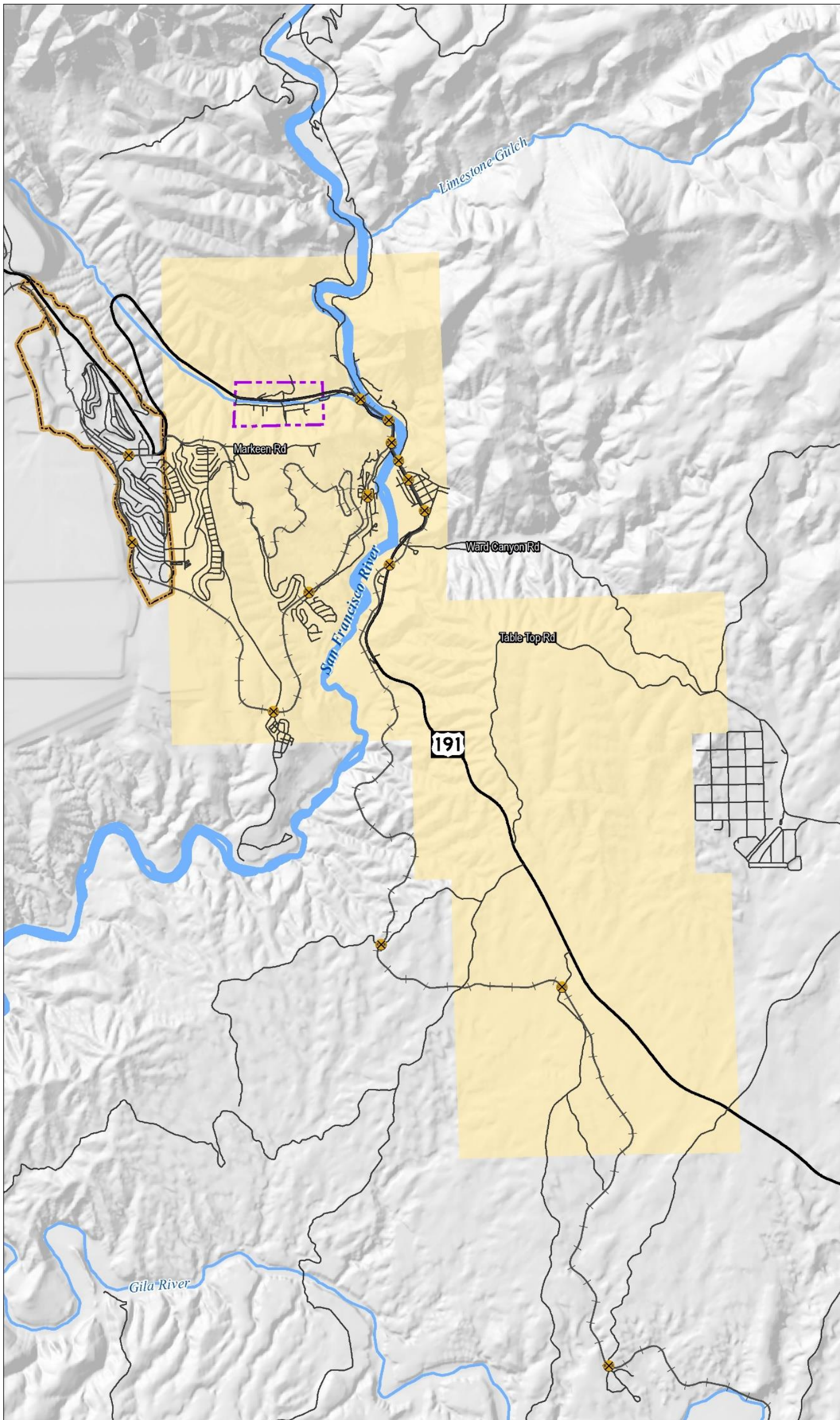
- ✈ Airport
- National Forest
- San Carlos Indian Reservation

LOCATION/REGIONAL CONTEXT



Sources: Arizona State Land Department, 2017
 Arizona Department of Transportation, 2018
 Arizona Land Resource Information Services, 2013

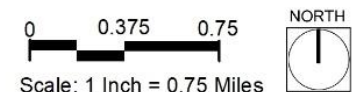




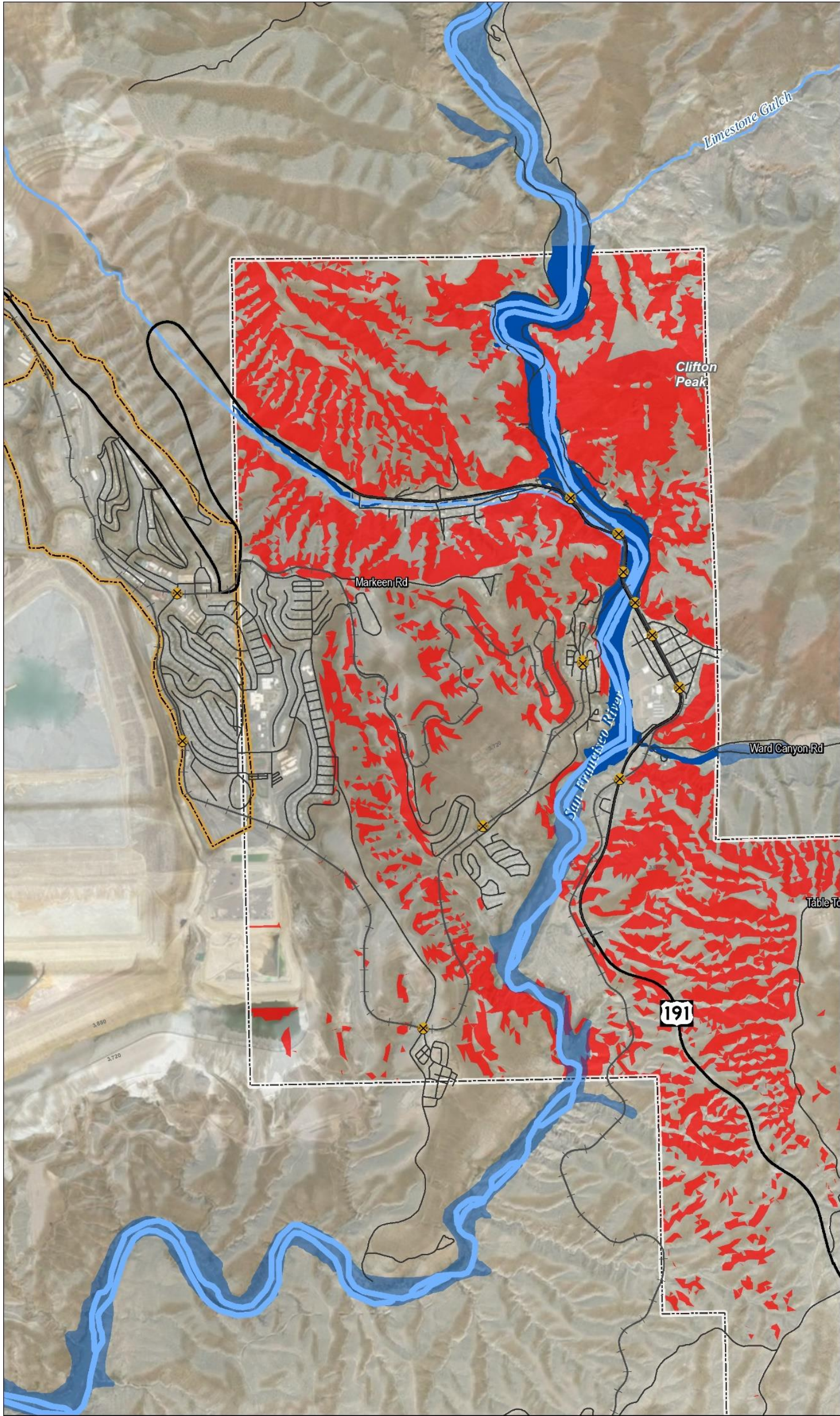
LEGEND

- Clifton Town Limits
- Morenci
- Downtown Clifton
- Major Roads
- Rail
- Rivers
- Highway
- X Road and Rail Crossing

STUDY AREA



Sources: Arizona State Land Department, 2017
Arizona Department of Transportation, 2018
Arizona Land Resource Information Services, 2013



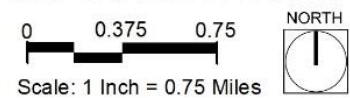
LEGEND

- Clifton Town Limits
- Morenci
- Major Roads
- Highway
- Rail

- ⊗ Road and Rail Crossing
- Rivers
- 100-Year Flood Zone Mapped (Floodway)
- 100-Year Flood Zone Not Mapped

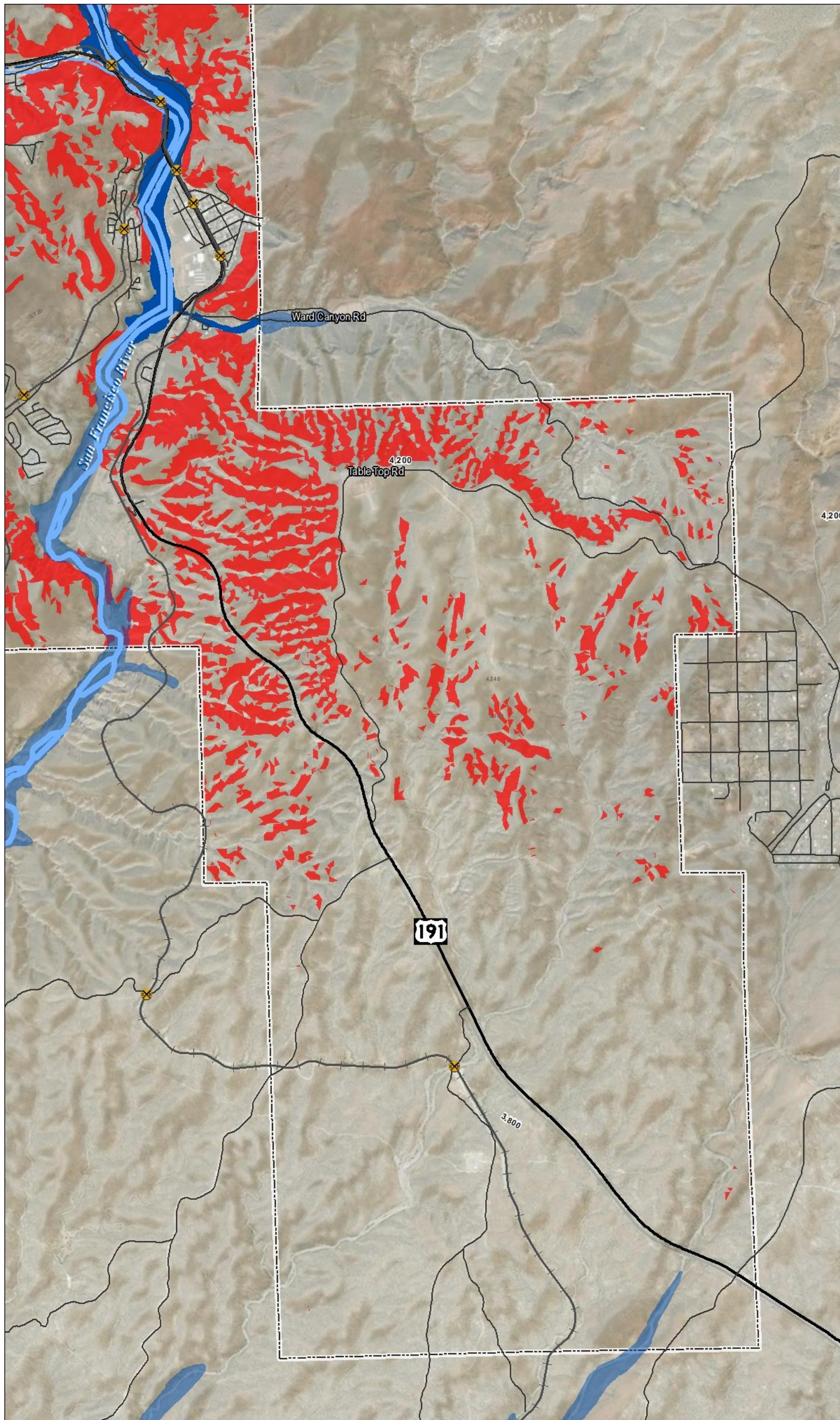
GENERALIZED TOPOGRAPHIC & FLOODPLAIN CONSTRAINTS NORTH

Restricted by Topography



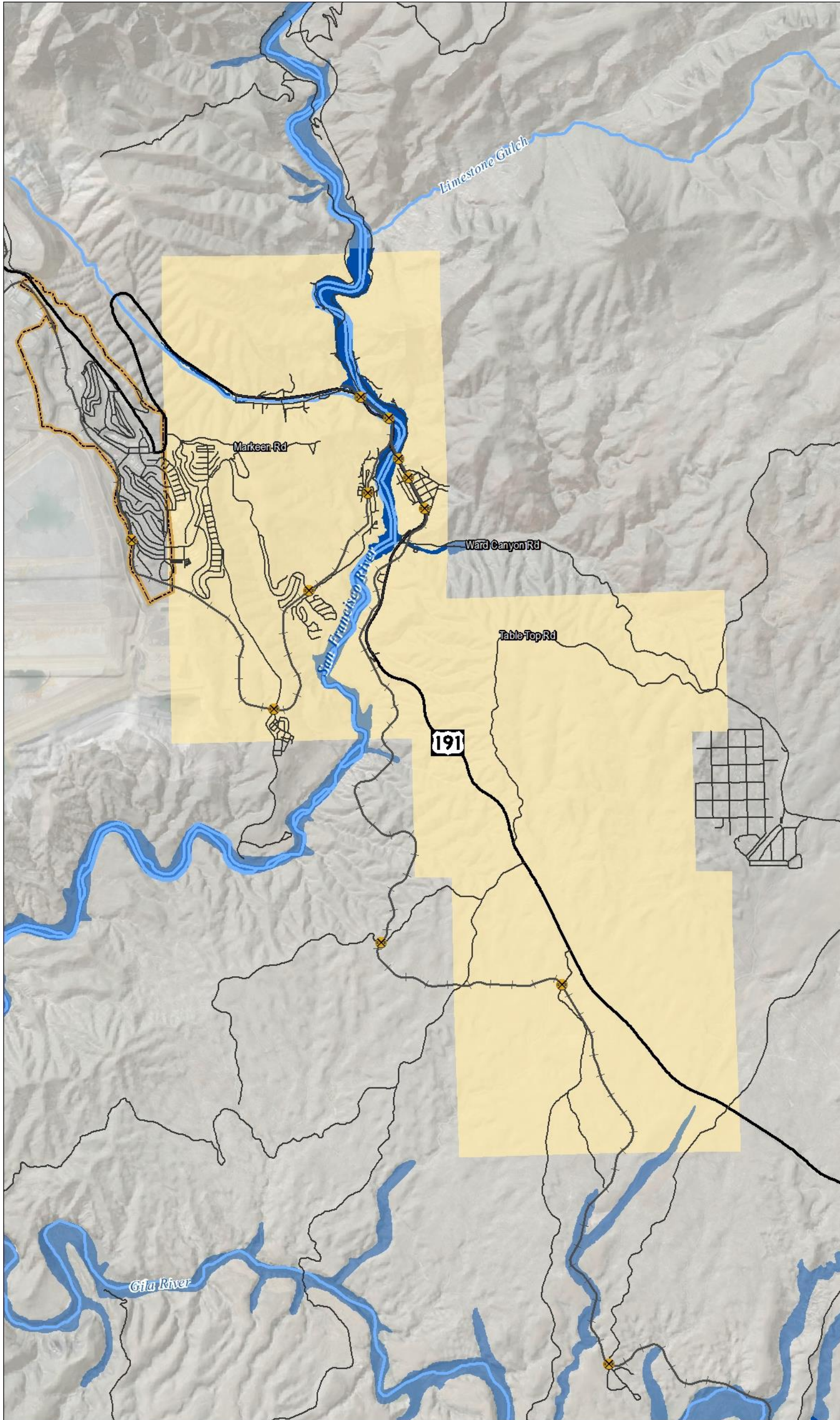
Sources: Arizona State Land Department, 2017
 Arizona Department of Transportation, 2018
 Arizona Land Resource Information Services, 2013

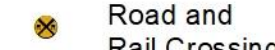
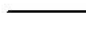




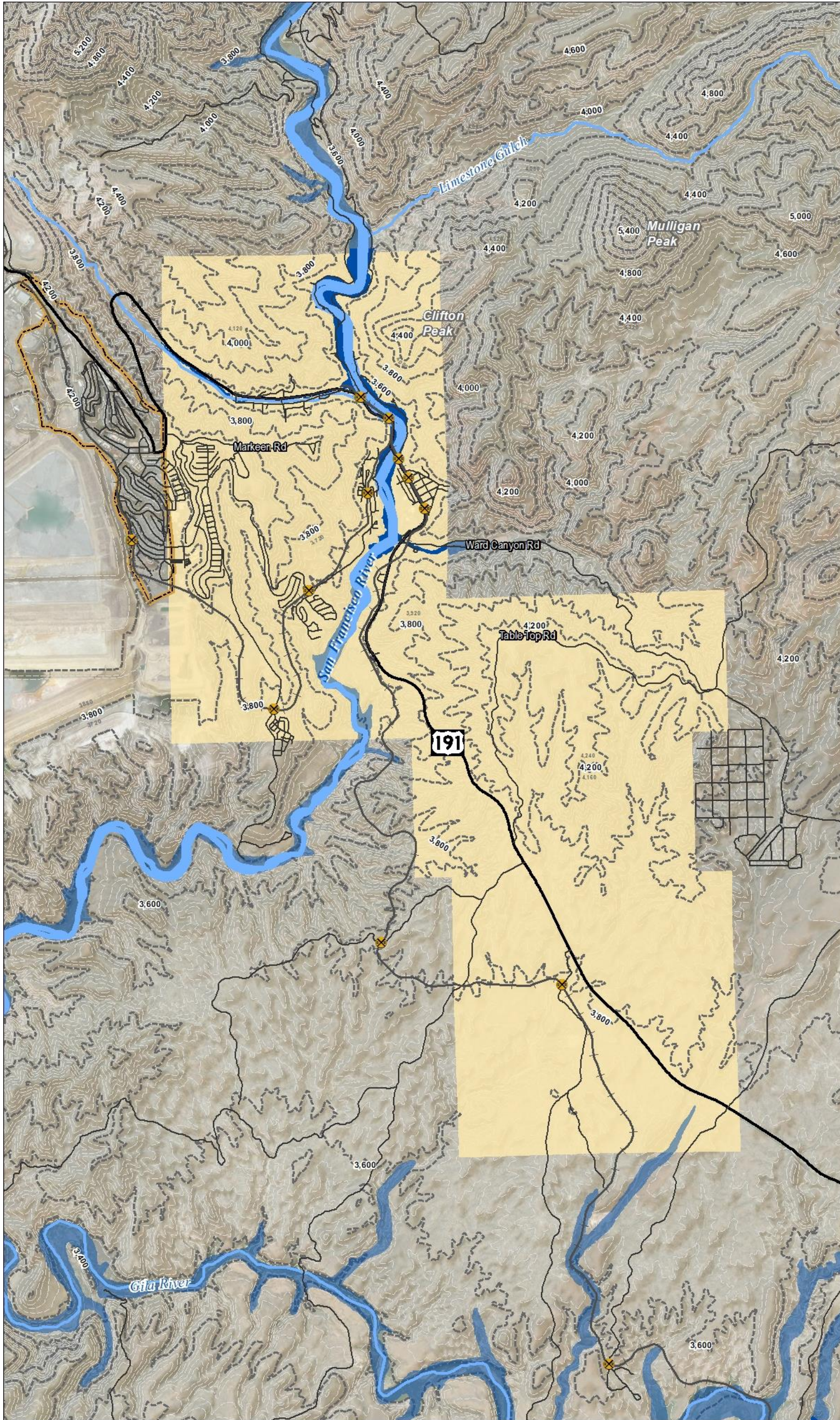
LEGEND	Clifton Town Limits	Road and Rail Crossing	GENERALIZED TOPOGRAPHIC & FLOODPLAIN CONSTRAINTS NORTH
	Morenci	Rivers	
	Major Roads	100-Year Flood Zone Mapped (Floodway)	
	Highway	100-Year Flood Zone Not Mapped	
Rail	Restricted by Topography	<p>Scale: 1 Inch = 0.75 Miles</p> <p>Sources: Arizona State Land Department, 2017 Arizona Department of Transportation, 2018 Arizona Land Resource Information Services, 2013</p>	





LEGEND	 Clifton Town Limits	 Rail	 100-Year Flood Zone Mapped (Floodway)	HYDROLOGY
	 Morenci	 Road and Rail Crossing	 100-Year Flood Zone Not Mapped	
	 Major Roads	 Rivers	 	
	 Highway	<small>Sources: Arizona State Land Department, 2017 Arizona Department of Transportation, 2018 Arizona Land Resource Information Services, 2013</small>		

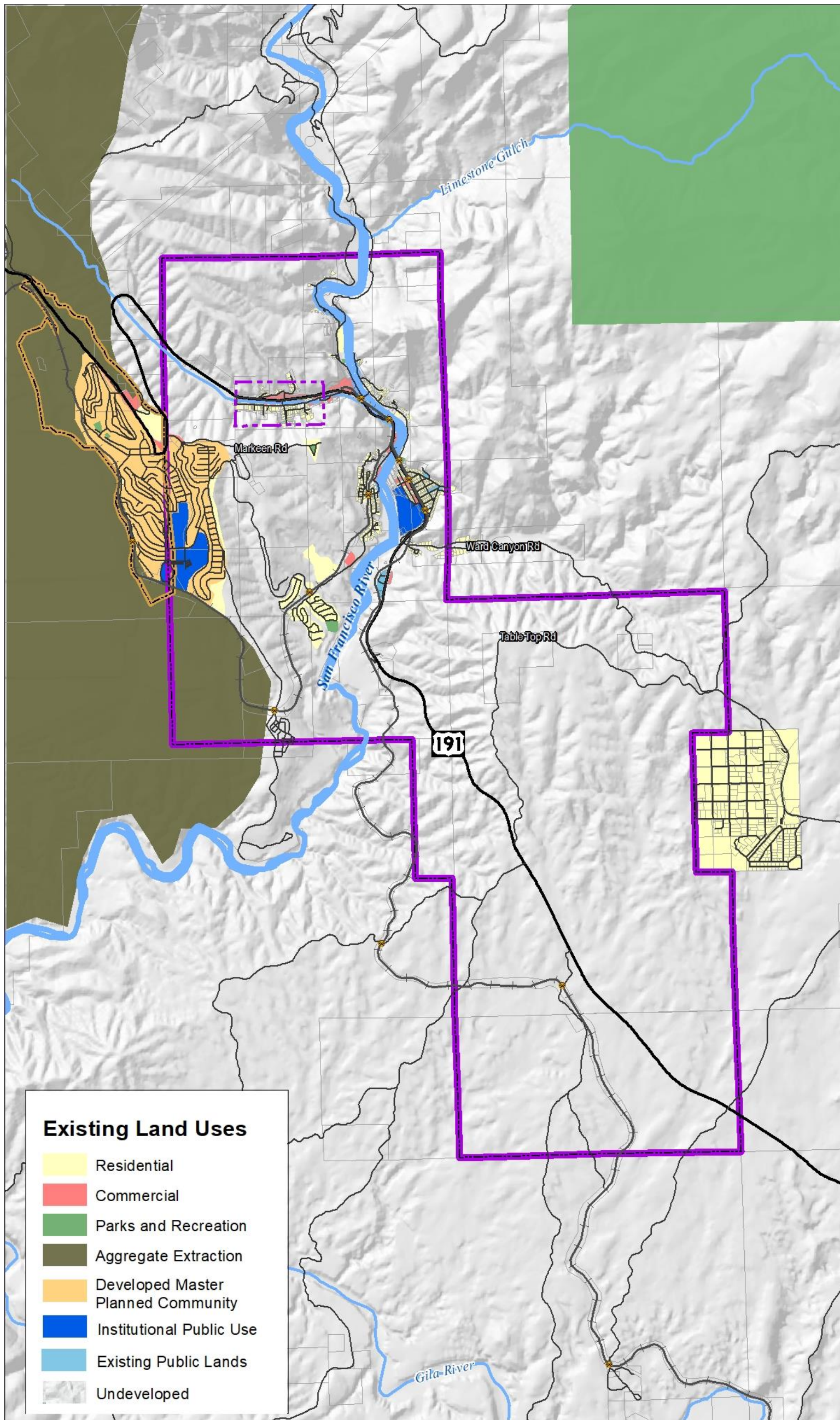




LEGEND	Clifton Town Limits	Road and Rail Crossing	200' Elevation Contours	OPPORTUNITIES & CONSTRAINTS
	Morenci	Rivers	40' Elevation Contours	
	Major Roads	100-Year Flood Zone Mapped (Floodway)	0 0.375 0.75 Scale: 1 Inch = 0.75 Miles	
	Highway	100-Year Flood Zone Not Mapped	NORTH	
Rail				

Sources: Arizona State Land Department, 2017
 Arizona Department of Transportation, 2018
 Arizona Land Resource Information Services, 2013

Exhibit 5: Physical Opportunities and Constraints



Existing Land Uses

- Residential
- Commercial
- Parks and Recreation
- Aggregate Extraction
- Developed Master Planned Community
- Institutional Public Use
- Existing Public Lands
- Undeveloped

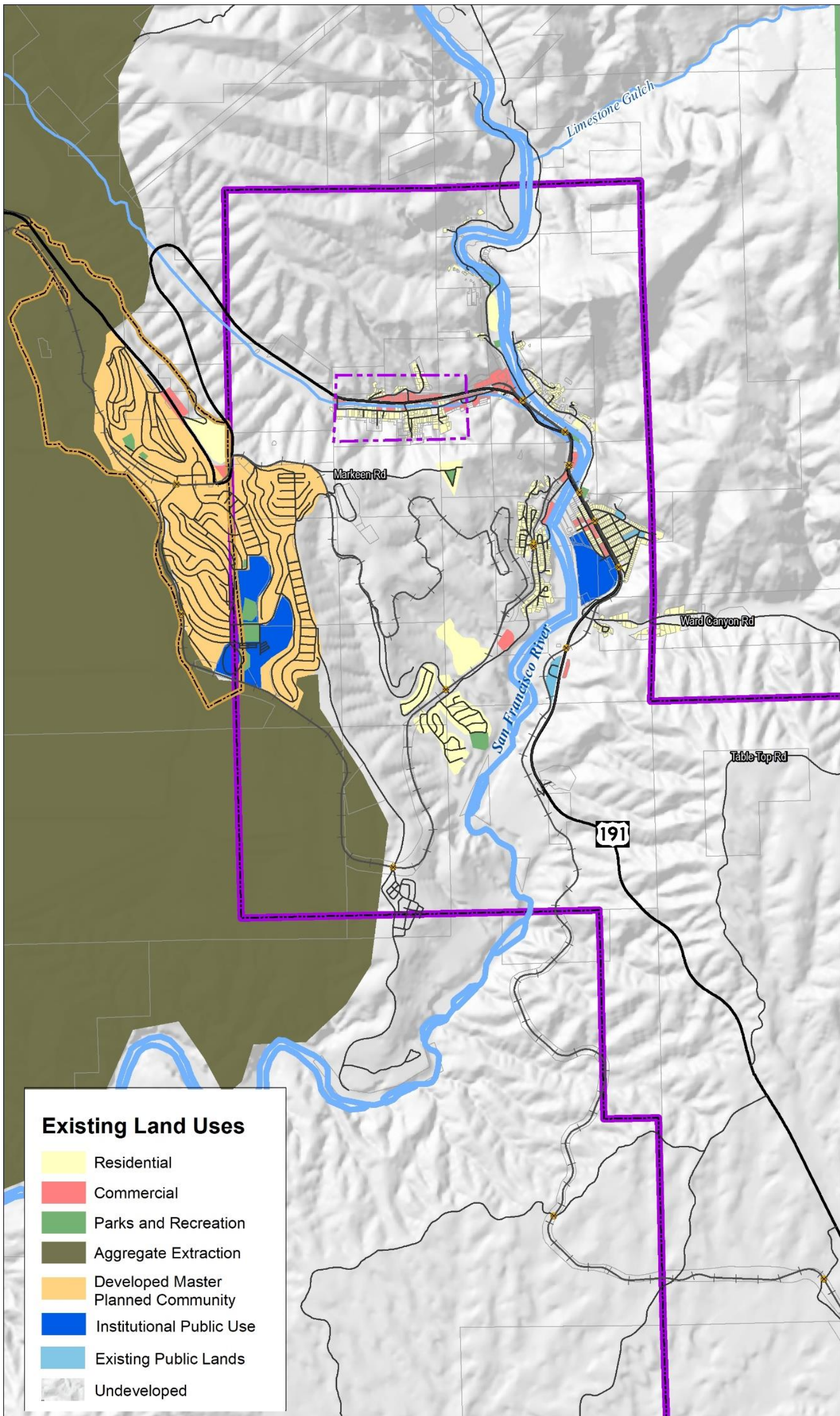
LEGEND

LEGEND	<ul style="list-style-type: none"> Clifton Town Limits Morenci Downtown Clifton 	<ul style="list-style-type: none"> Major Roads Highway Rivers 	<ul style="list-style-type: none"> Rail X Road and Rail Crossing 	<p>EXISTING LAND USE</p> <p>0 0.375 0.75 Scale: 1 Inch = 0.75 Miles</p> <p>NORTH</p>
---------------	----------------------------------------------------------------------------------------------------------------------------------------------------------------------------------------------------------------------------------------------------------------------------------------------------------------------------------------------------------------------------------------------------------------------------------------------------------------------------------	--------------------------------------------------------------------------------------------------------------------------------------------------------------------------------------------------------------------------------------------------------------------------------------------------------------------------------------------------------------------------------------------------------------------------------------	--------------------------------------------------------------------------------------------------------------------------------------------------------------------------------------------------------------------------------------------------------------------------------------------------------------------------------------------------------------------------------------------------------------------------------------------------------------------------------------------------------------------------------------------	-------------------------------------------------------------------------------------------------

Sources: Arizona State Land Department, 2017
 Arizona Department of Transportation, 2018
 Arizona Land Resource Information Services, 2013



Exhibit 6.a: Existing Land Use



Existing Land Uses

- Residential
- Commercial
- Parks and Recreation
- Aggregate Extraction
- Developed Master Planned Community
- Institutional Public Use
- Existing Public Lands
- Undeveloped

LEGEND

- Clifton Town Limits
- Major Roads
- Highway
- Rivers
- Morenci
- Downtown Clifton
- Rail
- X Road and Rail Crossing

EXISTING LAND USE ENHANCED

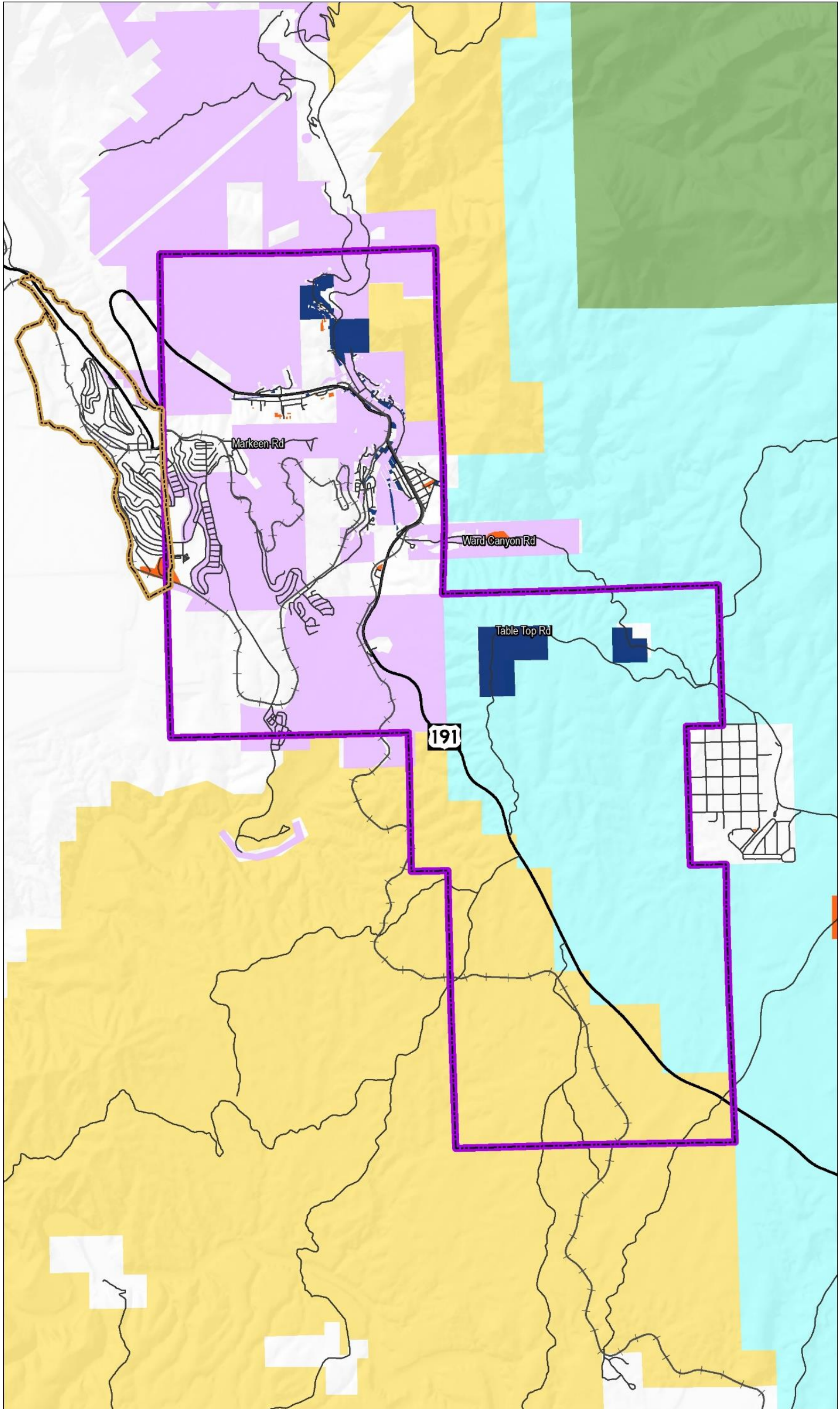
0 0.25 0.5
Scale: 1 Inch = 0.5 Miles

NORTH

Source: Arizona State and Department 2017
Arizona Department of Transportation 2018
Arizona and Resource Information Service 2013



Exhibit 6.b: Existing Land Use



LEGEND

- Clifton Town Limits
- Morenci
- Major Roads
- Highway
- Rail

- Rivers
- Private
- BLM
- ASLD

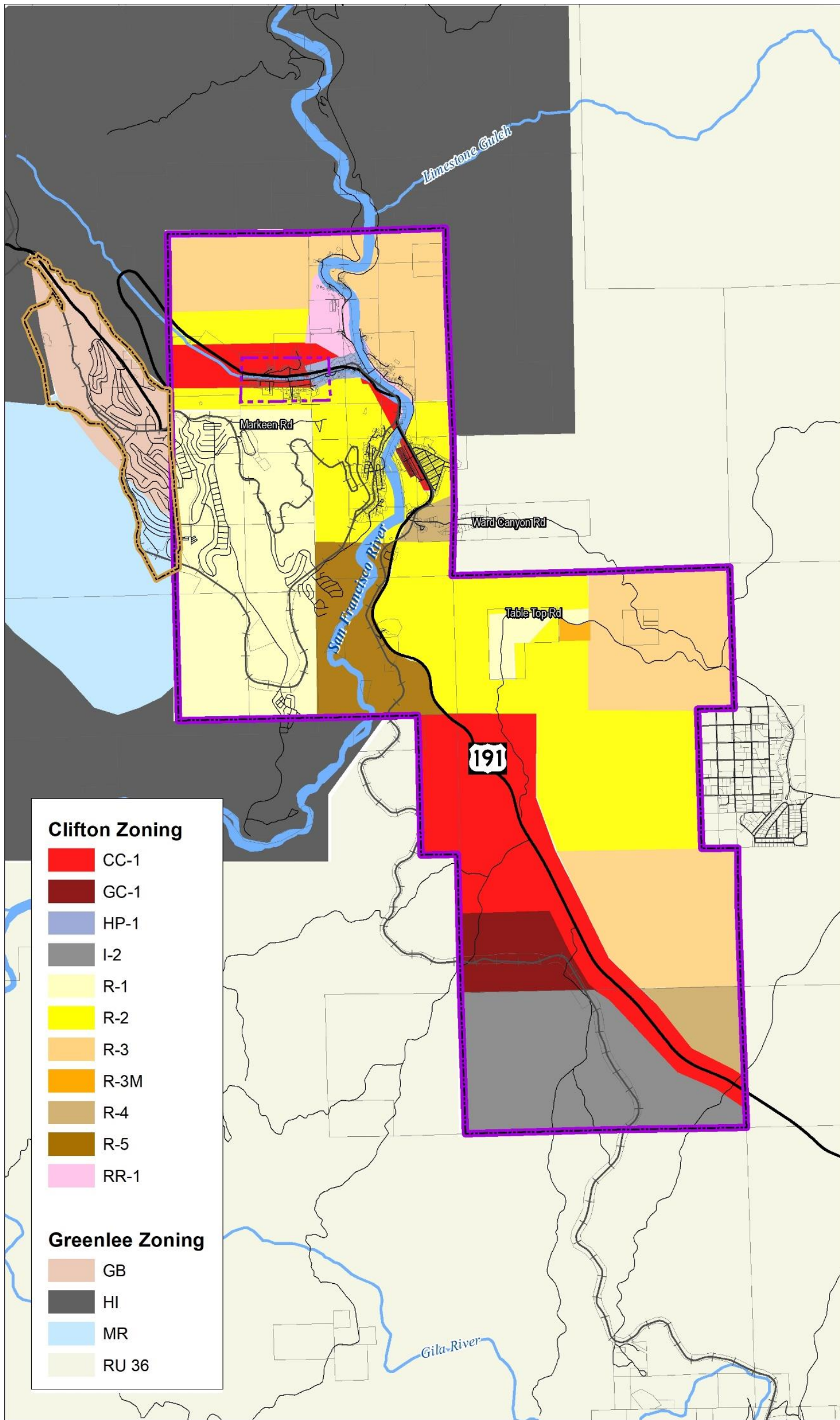
- Town of Clifton
- Greenlee County
- Freeport-McMoRan
- Apache-Sitgreaves National Forest

LAND OWNERS

0 0.375 0.75
 Scale: 1 Inch = 0.75 Miles



Sources: Arizona State Land Department, 2017
 Arizona Department of Transportation, 2018
 Arizona Land Resource Information Services, 2013



Clifton Zoning

- CC-1
- GC-1
- HP-1
- I-2
- R-1
- R-2
- R-3
- R-3M
- R-4
- R-5
- RR-1

Greenlee Zoning

- GB
- HI
- MR
- RU 36

LEGEND

- Clifton Town Limits
- Major Roads
- Rivers
- Morenci
- Highway
- Rail
- Downtown Clifton

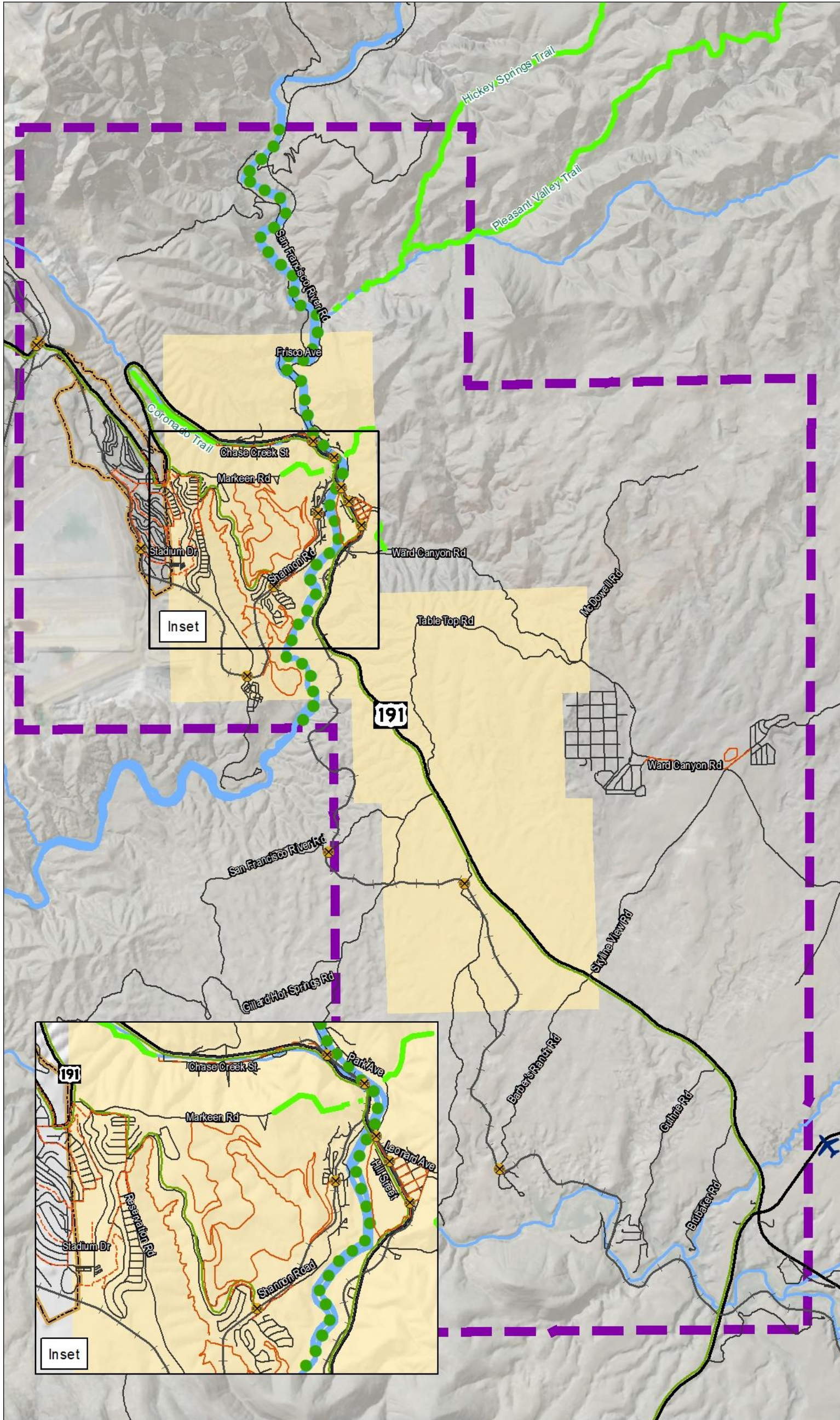
CURRENT ZONING

0 0.375 0.75
Scale: 1 Inch = 0.75 Miles

NORTH



Sources: Arizona State Land Department, 2017
Arizona Department of Transportation, 2018
Arizona Land Resource Information Services, 2013



LEGEND	Clifton Town Limits	Highway	San Francisco River Corridor
	Morenci	Major Roads	Existing Trail
	Designated Planning Area	Rail	Proposed Trail
	Bicycle Route	Road and Rail Crossing	Existing Pedestrian Path
	Airport	Proposed Pedestrian Path	

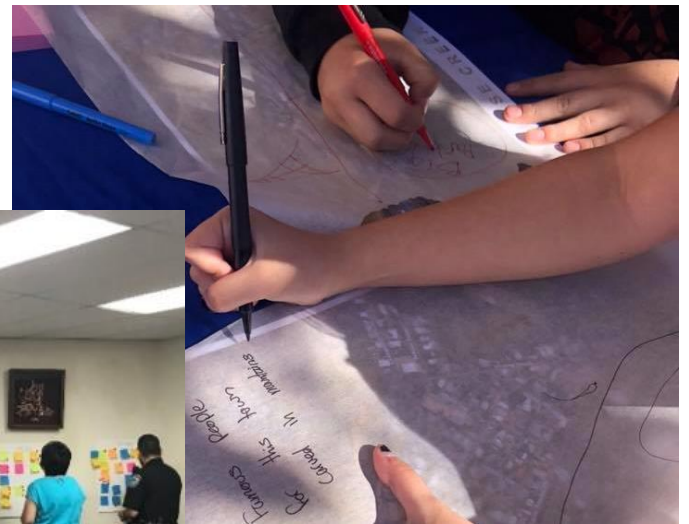
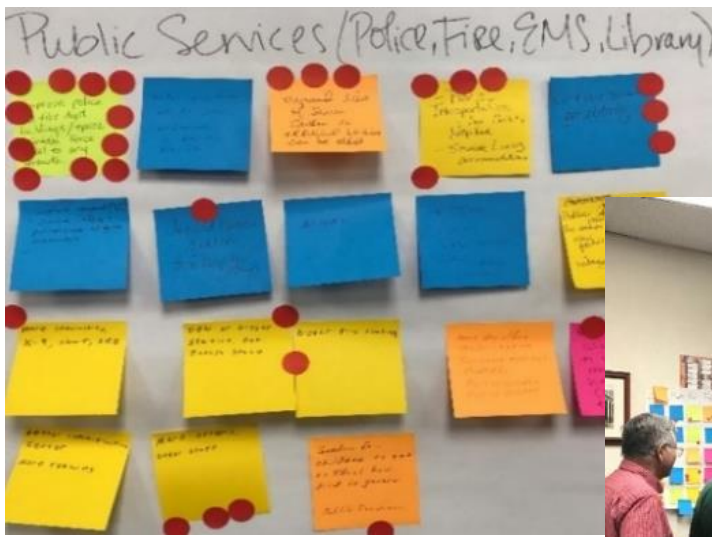
TRANSPORTATION & CIRCULATION

0 0.5 1

Sources: Arizona State Land Department, 2017
Arizona Department of Transportation, 2018
Arizona Land Resource Information Services, 2013

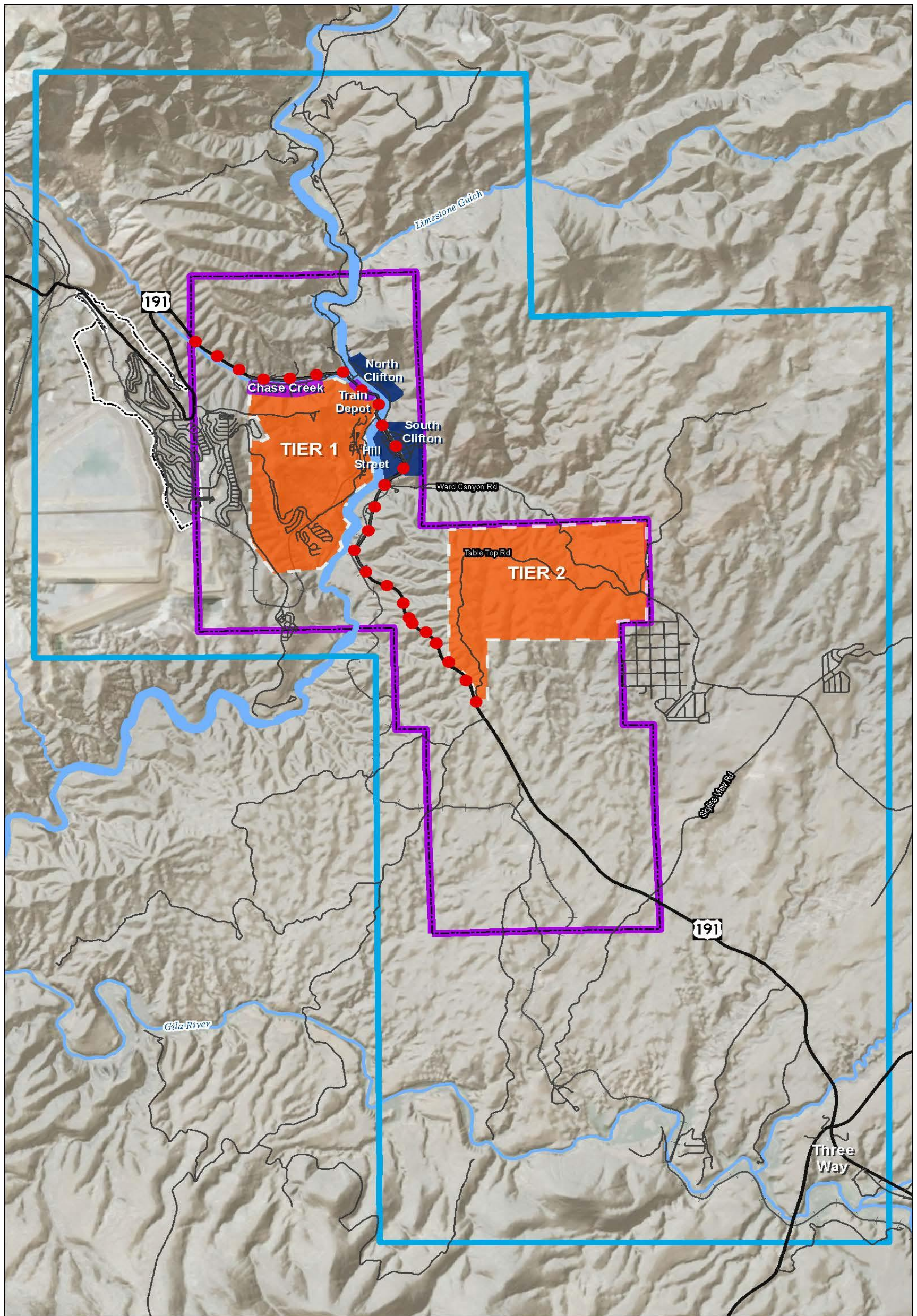


The Town of Clifton Community Vision







Clifton will continue to be a vibrant, prosperous and welcoming community with small town charm which embraces its rich historic heritage, while looking toward the future. Capitalizing on its natural resources, Heritage Core, unique geography and topography, Clifton will continue to support healthy people, economy, infrastructure and environment making the Town a destination located Where the Trail Begins.

traditions
 small-town
 inclusive
 heritage
 safe
 history
 generations
 eco-tourism
 unique
 friendly
 caring
 services
 welcoming
 prosperous
 vibrant
 healthy



LEGEND

-  Clifton Town Limits
-  Redevelopment Areas
-  Morenci
-  Infill Areas
-  Designated Planning Area
-  Highway Corridor
-  Growth Areas

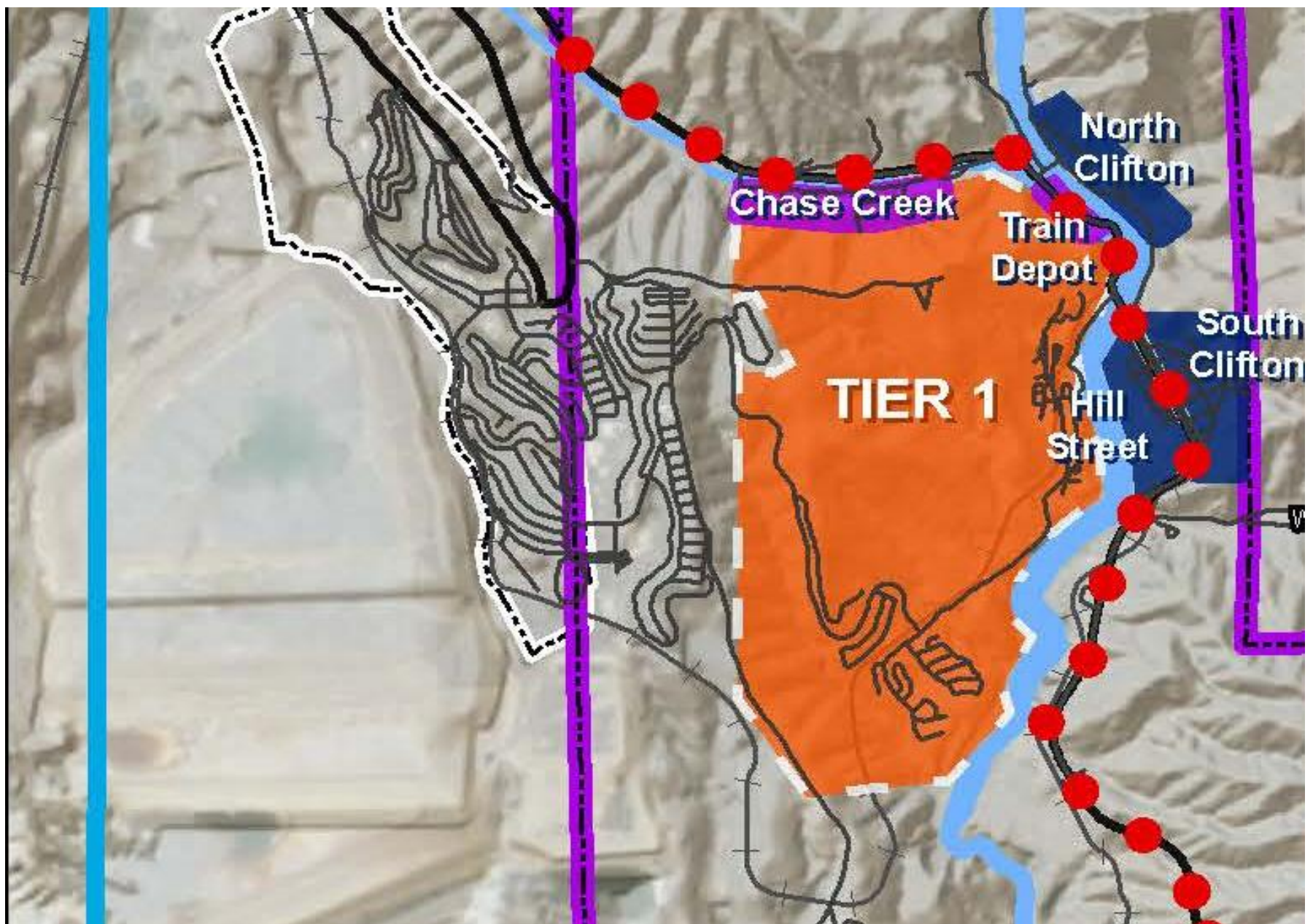
-  Rail
-  Rivers
-  Major Roads
-  Highway

GROWTH AREAS



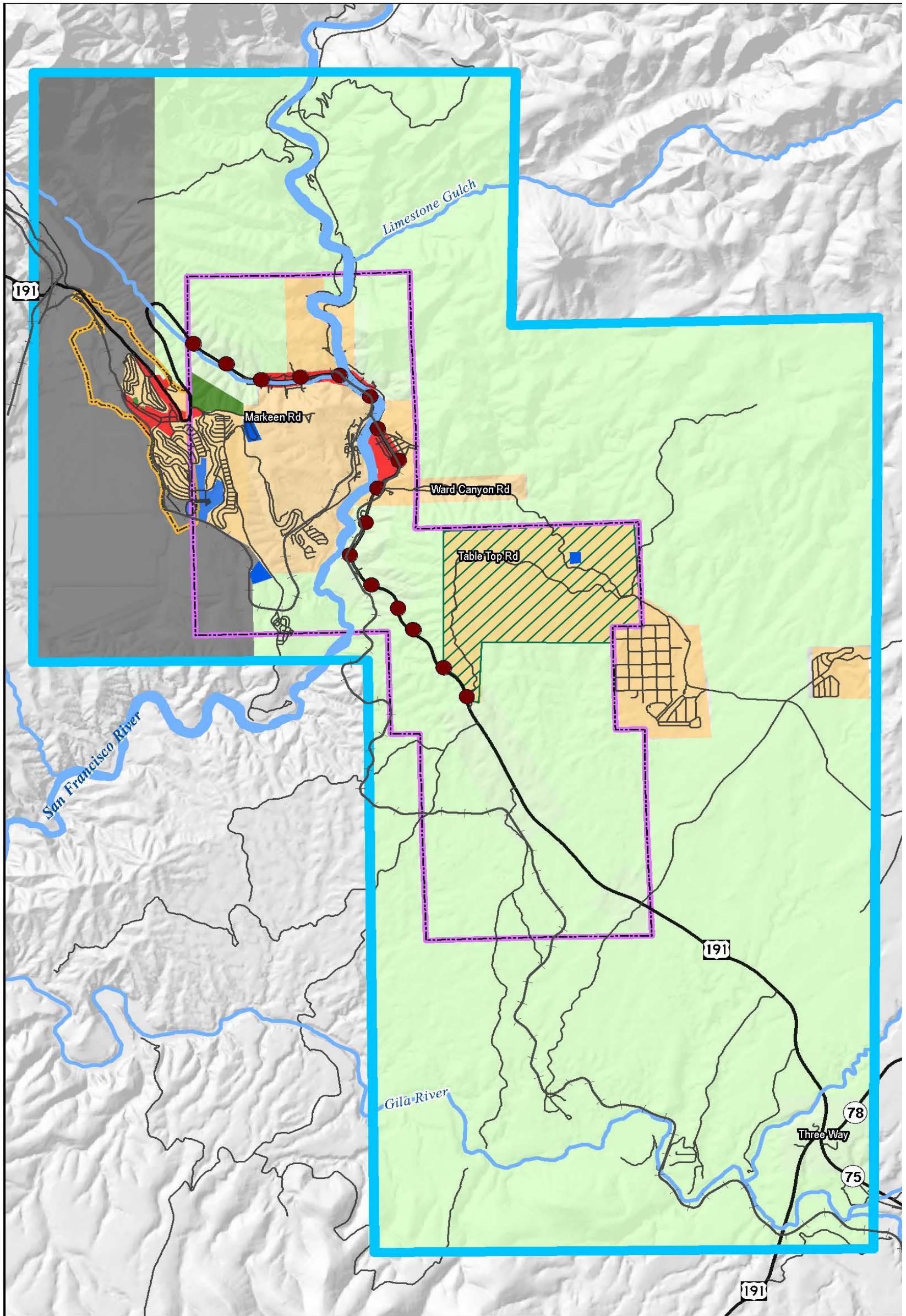
PROJECT: TOC-01 DATE: 06/13/19
FILE NAME: TOC-01_Growth Areas2.mxd

Sources: Arizona State Land Department, 2017
Arizona Department of Transportation, 2018
Arizona Land Resource Information Services, 2013



1. Growth Areas;
2. Redevelopment/Revitalization Planning Areas;
3. Infill/Repurposing Areas Planning Areas; and
4. The San Francisco River Corridor Area.

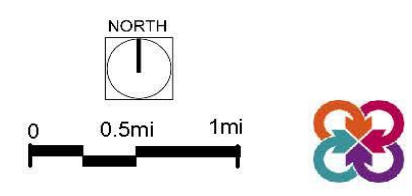
- **Tier 1 Growth Areas:** includes growth areas inside the Town of Clifton that could be developed within the next 10 years. The Town should focus their efforts on the Tier 1 Growth Area described and delineated in the Growth Areas Element.
- **Tier 2 Growth Area:** includes lands owned by the ASLD in the Table Top area. Development within State Trust Lands requires advanced coordination with ASLD and concurrency with a conceptual land use and circulation plan depicting highest and best use prior to the release of those lands for sale and prior to annexation.



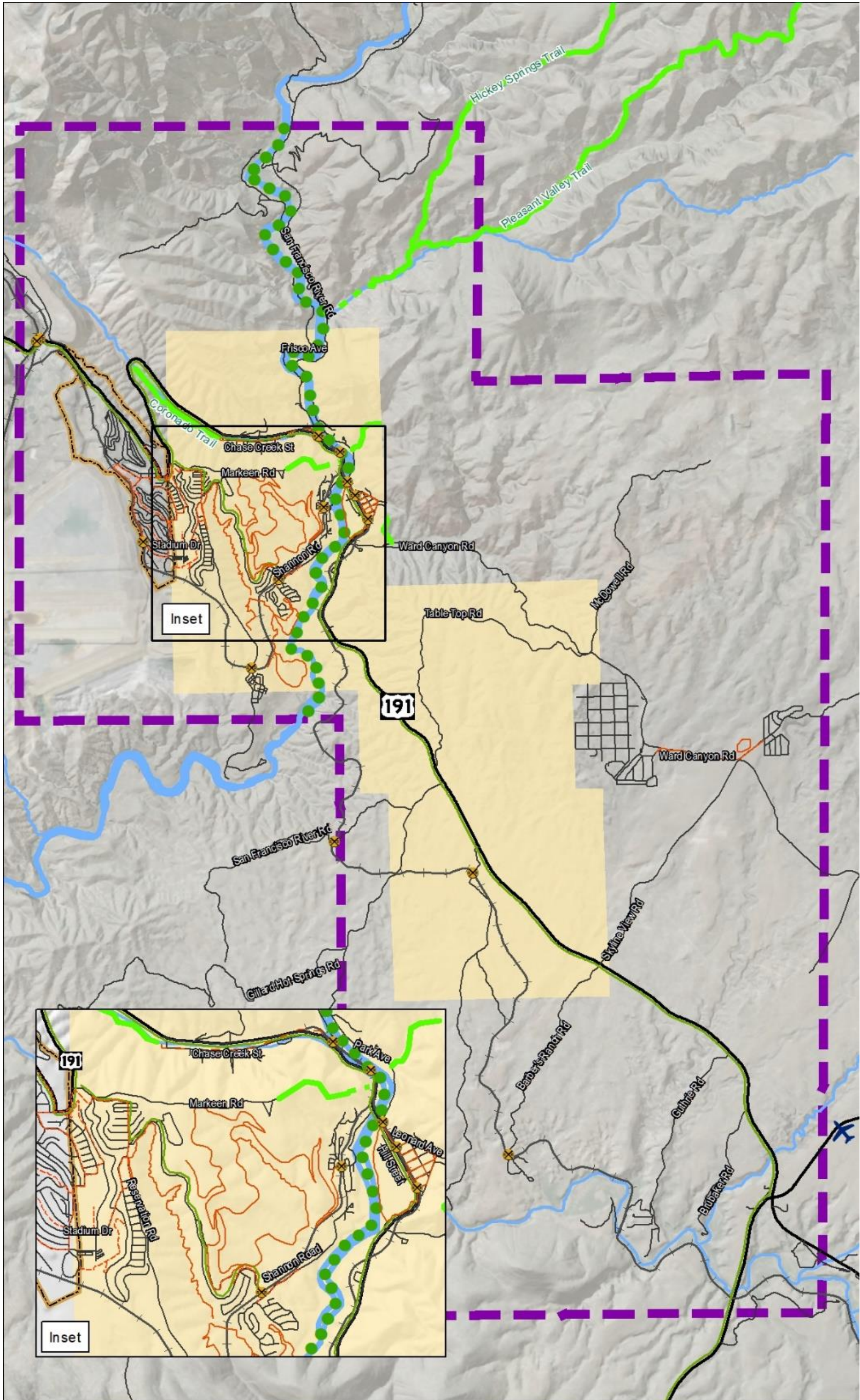
LEGEND

- | | | | | | |
|--|--------------------------|--|--------------------|--|------------------|
| | Clifton Town Limits | | Neighborhoods | | Rail |
| | Morenci | | Highway Enterprise | | Rivers |
| | Designated Planning Area | | Rural | | Highway |
| | Development Reserve | | Parks & Recreation | | Major Roads |
| | | | Aggregate Resource | | Highway Corridor |
| | | | Public Facilities | | |

FUTURE LAND USE



PROJECT: TOC-01 DATE: 06/14/19
 FILE NAME: TOC-01_FutureLandUse.mxd
 Sources: Arizona State Land Department, 2017
 Arizona Department of Transportation, 2018
 Arizona Land Resource Information Services, 2013



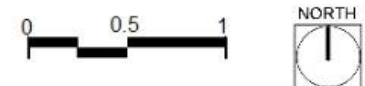
- LEGEND**
- Clifton Town Limits
 - Morenci
 - Designated Planning Area
 - Bicycle Route

- Highway
- Major Roads
- Rail
- +

 Road and Rail Crossing
- Airport

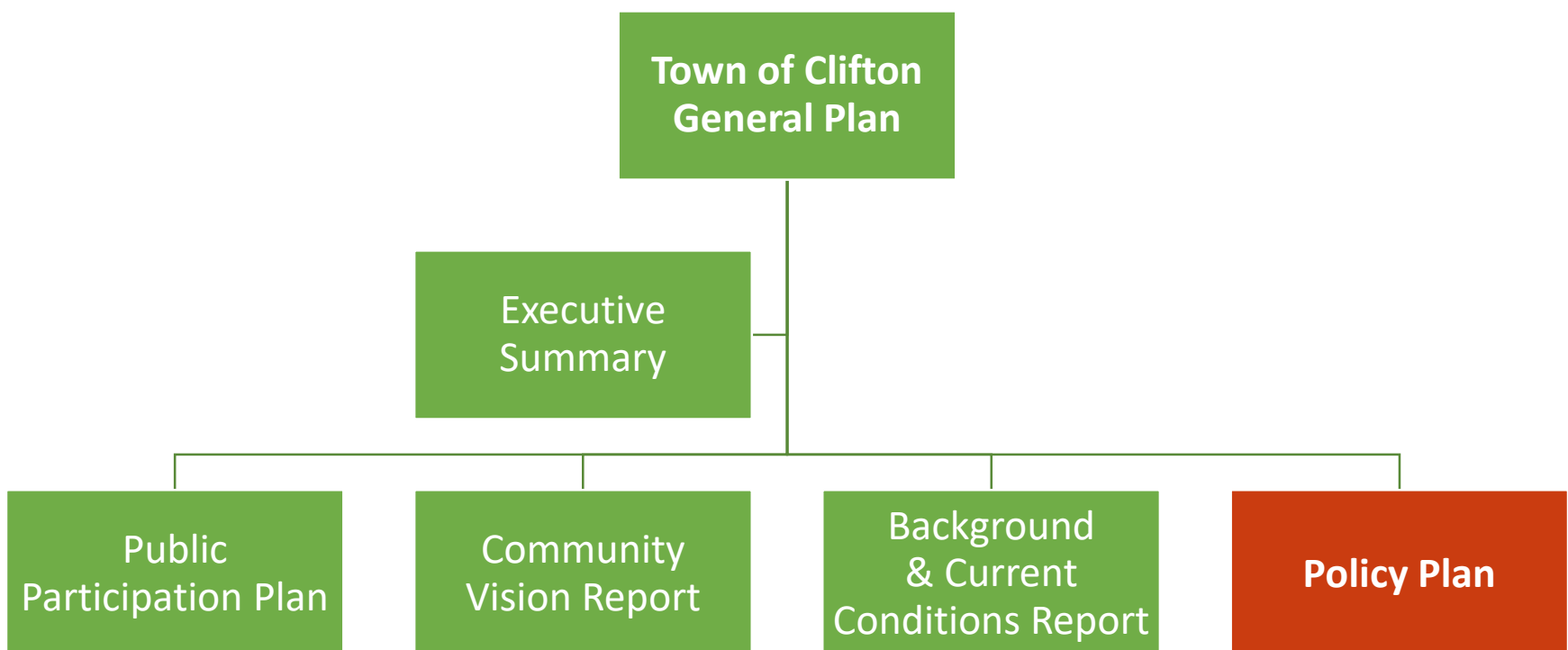
- San Francisco River Corridor
- Existing Trail
- Proposed Trail
- Existing Pedestrian Path
- Proposed Pedestrian Path

TRANSPORTATION & CIRCULATION



Sources: Arizona State Land Department, 2017
 Arizona Department of Transportation, 2018
 Arizona Land Resource Information Services, 2013

General Plan Organization



General Plan Framework

Comprised by the community vision, elements, guiding principles, goals, policies, and implementation strategy, the General Plan framework creates the structure that will guide and support the Town's decision-making in all aspects related to the General Plan. Key General Plan definitions include:

- **Community Vision:** a concise statement of the desired outcome supported by guiding principles and goals.
- **Element:** a chapter of the General Plan addressing Arizona Revised Statutes requirements.
- **Guiding Principle:** a statement of intent guiding the vision of Clifton as it relates to each element of the General Plan. A guiding principle leads each element of the General Plan and connects each goal to the overall Community Vision.
- **Goal:** a general statement expressing the desired objectives the community of Clifton seeks with regards to future development within the Town and its designated planning area.
- **Policy:** an action statement supporting a goal, providing a framework for present and future decisions and guiding the formulation of specific programs and strategies enumerated under the implementation strategies.
- **Implementation Strategy:** a specific action or strategy required to carry out a policy or group of policies of the General Plan to achieve or implement its goal. Located in the Implementation chapter, implementation strategies enumerate responsible parties, funding mechanisms, and proposed timeframes.



General Plan Elements

This General Plan exceeds the statutorily required elements and includes the following elements:

1. Growth Areas
 2. Land Use
 3. Transportation and Circulation
 4. Housing & Neighborhood/Community Beautification
 5. Parks, Recreation, Trails and Open Space
 6. Economic Development
 7. Healthy Community
 8. Public Facilities and Services
 9. Water Resources
 10. Environmental Planning
 11. Cost of Development
- Plan Administration and Implementation