

## *The first true all-season, electric cabin, off-road capable, new high-tech recreational vehicle*

### VEHICLE SPECS

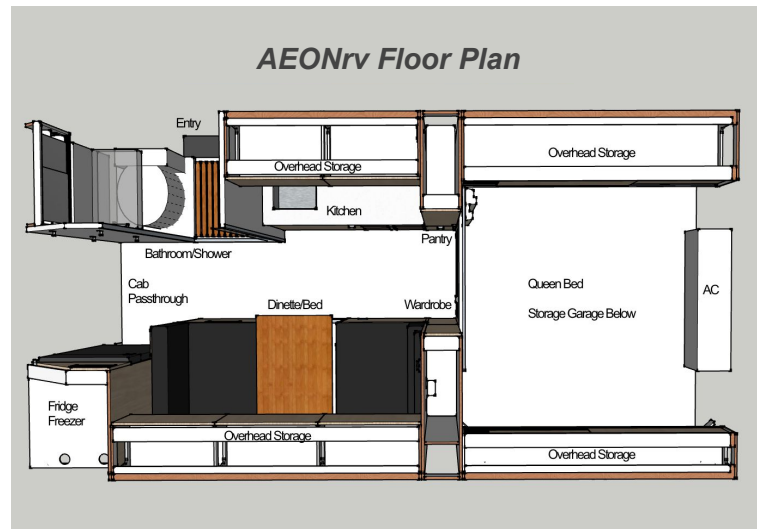
- Ford Transit all-wheel drive 1-Ton SRW 156" wheelbase cutaway chassis, 9,950 lbs GVWR
- 3.5L EcoBoost® V6 engine with 306 horsepower and 400lb. ft.torque
- 10-speed automatic overdrive transmission w/SelectShift® capability, 3.73 limited slip axle, electric parking brake
- Ford Perimeter Plus Vehicle Security Alarm System with key fob remote start
- FordPass Connect and App for remote start, lock/unlock, roadside assistance and vehicle health alerts
- Dual heavy-duty AGM starter batteries with 250A heavy-duty alternator
- Tow/haul mode with integrated 7-pin harness, 4,500lbs max towing capacity
- 31 gallon fuel tank, 350 mile estimated range at 65 mph
- Dark Palazzo Gray Cloth 10-way power heated seats, SYNC 4 HD AM/FM stereo with 12" multi-function touch display, Garmin navigation, Sirius XM, Bluetooth & dual USB ports, and integrated backup camera
- Blind Spot Information System (BLIS) with Cross-Traffic Alert, Reverse Sensing System, Front Parking Sensors
- Heated long-arm power mirrors, black surround HID headlamps, front fog lamps, LED tail lights, intelligent adaptive cruise control, lighted vanity mirror sun visors, engine block heater, all-weather floor mats, front overhead shelf, wiper activated headlamps, daytime running lights
- Highly insulated walls, floor, and roof panels with thermal transfer free construction, insulated doors and acrylic dual pane windows (averages R-15)
- 6'8" inside height and width, 13'5" length, exterior 22'L, 7"W, 10'H, OCCC 1,500 lbs depending on options

### OFF-ROAD

- Ford factory intelligent all-wheel drive with slippery and mud/ruts modes, grip style step boards, front wheel well liners, custom stainless steel rear wheel wells and rear mud flaps
- 16" heavy-duty black powder coated steel wheels, BFGoodrich All-Terrain T/A KO2 LT245/75R16 tires, included under mount matching spare tire and jack
- Van Compass (VC) 2" lift kit with custom heavy duty front coil spring and upgraded rear leaf springs
- Falcon custom tuned rear shocks with clearance shock extensions
- Powder coated 1/4" thick steel differential skid plate
- Custom rear aluminum bumper with 2" class 3 steel hitch receiver and two recovery points
- Rear wall L-Track for attaching extra gear like recovery tracks, shovel, etc.
- 32" rear facing 30k lumens LED light bar with cab switch
- Optional heavy duty custom front bumper with recovery points, winch, camper body brush guards, roof rack and intercooler skid plate

### ELECTRICAL

- Efficient 24 volt DC electrical system
- 8.2kWh 24V BattleBorn LiFePO4 battery pack, upgradable to 10.9kWh or 13.6kWh
- 3,000VA 24V DC, 70A 120V Victron Energy inverter/charger
- Alternator battery charging up to 1.6kWh
- 800 watt solar panel array with Victron 100/30 MPPT controller
- Remote electrical monitoring and system control from Victron Cerbo GX with 5" touch screen or any mobile device or browser
- All marine grade tinned stranded wiring and connectors



## COMFORT & OTHER SPECS

- Sleeping for 2 adults and 2 children with private 60" x 80" queen bed, 6" cool gel foam mattress with AirFlo under pad and 44" x 68" convertible dinette bed
- Dinette seats 4 adults with swivelable and adjustable table; 2 front facing dinette seats with 3 point seat belts mounted to aluminum frame to steel in the floor
- Large Nova Kool 6.8 cu. ft. fridge with separate 1.8 cu. ft. freezer drawer, 24V efficient dual compressors with dual thermostats, positive door latches to prevent unwanted door openings, storage for tall bottles
- Induction cooktop for use inside or out, deep kitchen sink, solid surface countertop, pull out pantry, dedicated pull out for garbage or recycle bins
- Frameless European style cabinetry and hardware with modern laminate facing
- Lots of storage, including multiple pullout drawers and dual hanging wardrobe
- Insulated modern flat dual pane acrylic lockable windows with integrated bug screens and privacy shades
- Private bath with inside/outside shower and flip-up sink
- Thetford C223-CS Cassette Toilet 4.75 gallons, optional Separett Tiny compostable toilet
- Over bed opening skylight with bug screen and blackout shades for stargazing and roof access
- Dual flow Maxxair MaxxFan Deluxe ceiling fan with remote control
- Low power and dimmable LED lighting throughout
- High efficiency and quiet (26-37dB) 9K BTU mini-split air conditioning with heat pump for heating down to -13F
- Espar Airtronic S3 B2L 2kW 12V ducted air heater with EasyStart Pro controller, auto high altitude compensation to 18,000', and connection to the gas tank
- 59 Gallons fresh water storage with tank level sensor, 24V Shurflo Aqua King II 3 GPM Water Pump, all PEX-A plumbing lines, Clearsource two stage 0.2 micron water filtration system
- 8 Gallon Isotemp marine hot water heater, heated by engine coolant or 115V-750W heating element
- 28 Gallon freeze protected exterior gray water tank with dump valve and tank level sensor
- Lockable insulated sliding door to cab for additional comfort and security
- Heavy duty 3-step aluminum stairs with lockable pin to prevent stair removal
- Over 65 cu. ft. of heated garage space with 40" height for inside bike storage
- Roof access wire port for installation of Starlink, WiFi or Cellular booster antennas

## OPTIONAL FEATURES

- Additional 2.7kWh 24V LiFePO4 battery pack - \$2,000 or 5.4kWh 24V LiFePO4 battery pack - \$4,000
- Bedroom passenger side view window, acrylic dual pane 12"H x 27"W - \$500
- Transit cab and body color Avalanche Gray or Ingot Silver (other than Oxford White) - \$10,000
- Starlink flat mount antenna, prewired for install of antenna, Gen 3 - \$550 or Mini \$500
- Brandmotion Commercial FullVUE® Mirror Vision System FVMR-1150 - \$700
- BlackVue DR770X-2CH TRUCK front and rear cameras with 64GB memory card with parking mode - \$600
- weBoost Drive Reach RV II, installed - \$750
- Additional RuuviTag 4-1 Bluetooth Sensor integrates with Cerbo GX, 2 already included - \$35 ea
- 2 burner induction cooktop (replaces 1 burner) - \$150
- Small 0.6 cu ft microwave in upper cabinet - \$150
- MoonShade awning 9'x7' - \$395 or MoonShade XL 12'x9' - \$595, w/ side attachment points
- MoonWall - Short 7'x7' - \$75 or MoonWall - Long 9'x7' - \$95 (compatible with MoonShade XL)
- Additional 4.75 gal. Thetford cassette toilet tank - \$200
- Separett Tiny compostable toilet with urine tube (replaces cassette toilet) - \$500 + \$85 for optional urine tank
- Gray water flexible dump hose, 12' long, 1-1/2" diameter with MNPT connector for gray tank ball valve - \$100
- Exterior lockable, folding kitchen work table, white or black powder coated aluminum, 28"x14" - \$250
- Lockable undermount storage box, black powder coated aluminum, 61.5"Lx13.5"Hx18"D - \$1,750
- Boot brush for stairs - \$100 and SafeStep slip prevention vinyl barrier for stairs - \$100
- FVC nudge bar with Baja Designs LP6 Pro Driving/Combo LED lights, pair with dash switch - \$2,500
- Intercooler skid plate, black powder coated 3/16" thick aluminum - \$750
- Hoodline mounted Baja Designs Squadron Pro Driving/Combo LED lights, pair with dash switch - \$750
- VC 2 front tow points bolted to frame designed for use with 7/8" d-rings to secure a tow line - \$1,000
- VC front receiver hitch bolted to the frame, black powder coated steel, static load capacity 400lbs - \$1,500
- VC front winch mount bumper, 2 recovery points and 2" receiver, black powder coated steel, static load capacity 300lbs, winch not included - \$1,750
- VC nerf bar for front winch mount bumper, black powder coated steel - \$300
- North-South twin style bed layout replaces queen bed - TBD
- Camper body ridgeline brush guards, black powder coated aluminum - \$1.5k est. & roof rack rails - \$1.0k est.