

Fig. 1.—A diagram of the remote control arrangements at Devizes.

key and a switch key. The former is used for sending Morse signals to the engineer or for transmission through the sets to ships, and is

arranged to work on both 26 and 78 volts.

The non-polarised relay operates independently of the direction of

ham is in the "Off" position; the hand key can be used for "speaking" to Devizes, but will not operate the transmitter.

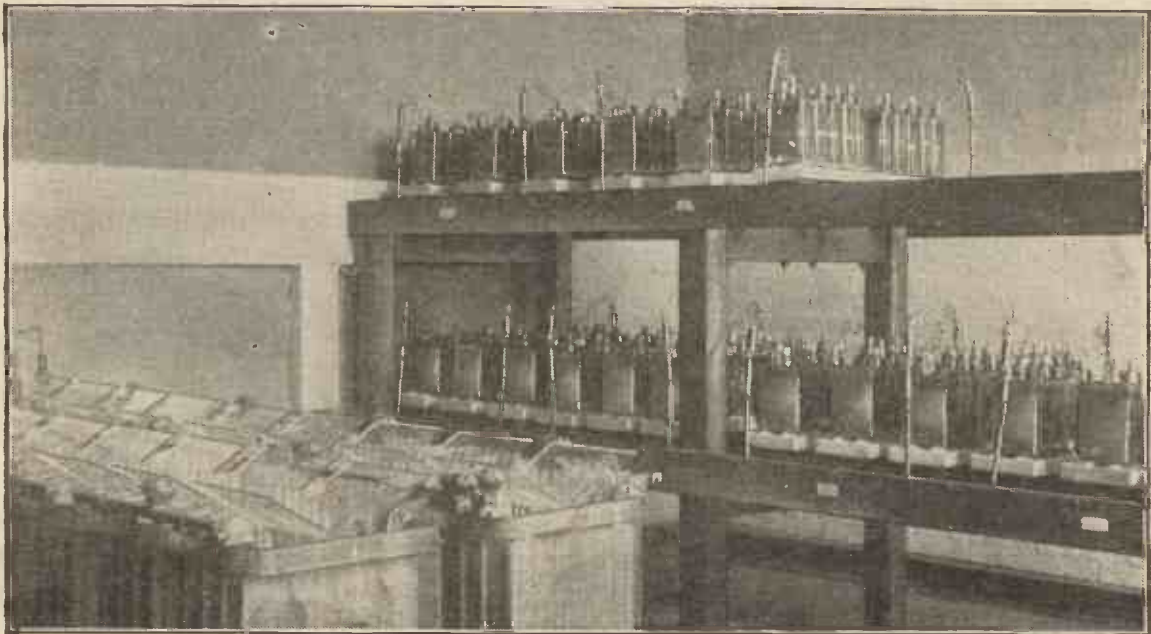
On placing the switch to "start," however, the non-polarised relay operates and starts up the transmitter. Operating the key at Burnham then causes the transmitter to function.

Safety Arrangements

An interlocking relay is incorporated at Devizes, which is a safety device preventing the operator from keying, and so taking a heavy current from the generators before they have had time to run up to full speed.

The control gear can be isolated or operated independently at the Devizes end if necessary.

The Devizes station is thus completely remote controlled by the



The lighting, the receivers and the land lines are run off accumulators all housed in one room. The main lighting batteries are in the foreground and the H.T. and land line batteries on the right.

arranged to reverse the connections between the battery and the line. The switch key is used for starting and stopping the transmitting sets, and in the "stop" position connects a 26 volt battery through the hand key to the line, while in the "start" position it changes over to a 78 volt battery.

Fig. 1 indicates the arrangement of the apparatus at the Devizes end of the control circuit. The operation of the polarised relay depends on the direction of the current passing through it. The reversals of current caused by the operation of the hand key at Burnham thus cause this relay to operate, and it is

the current, but will not work on the 26 volt battery.

Thus, when the switch at Burn-

operator at Burnham, the engineers at Devizes being concerned solely with the maintenance of the plant.

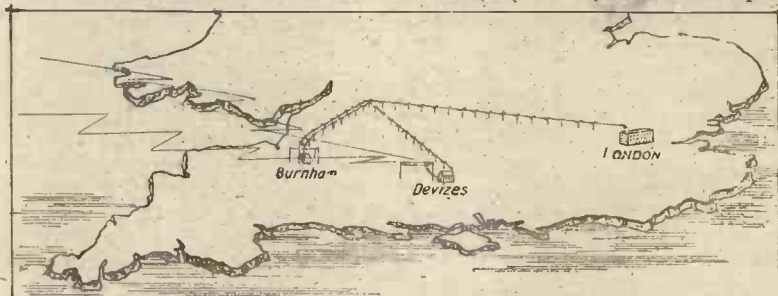


Fig. 2.—The station at Burnham controls the transmitters at Devizes by remote control and is also in telegraphic communication with London.