

Post Office Radio Station, Devizes.

By J. H. REYNER, B.Sc., A.C.G.I.

DEVIZES is the Post Office station which deals with long-distance ship traffic. The ordinary stations are equipped with $1\frac{1}{2}$ to 5-kw. spark transmitters operating on 600 metres, and are capable of working ships at ranges of from 150-300 miles, depending on conditions.

In August, 1920, however, a service was inaugurated, working on 2,100 metres C.W.,

fitted with C.W. apparatus has increased enormously, and there are several 3-kw. valve and 5-kw. arc sets in operation.

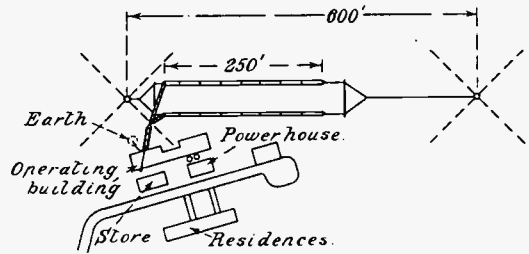


Fig. 2.—Layout of aerial system and buildings.

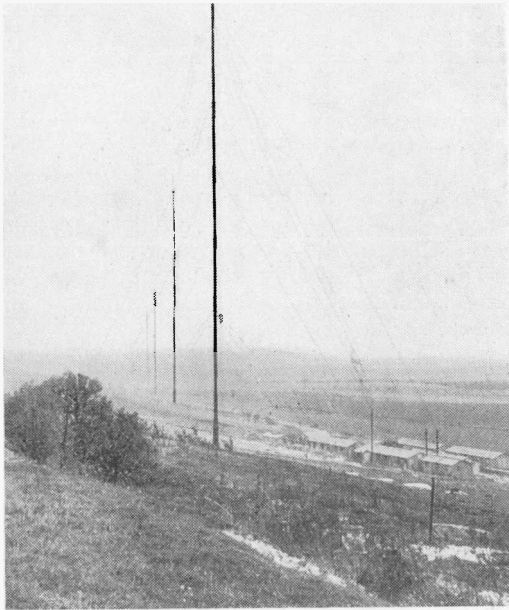


Fig. 1.—A general view of GKU.

The Devizes station (GKU) is situated in the middle of the Wiltshire downs, about four miles from Devizes itself, on the Marlborough Road. Fig. 1 shows a view of the station looking east.

The first two masts only are in use at the present time. These two masts are each 300 ft. tubular steel masts of the Marconi pattern and are 600 ft. apart.

The aerial is a double cage, 250 ft. long, each cage consisting of three wires spaced equally round a hoop 3 ft. in diameter. The lead-in is a 6-wire cage, 4 ft. 6 ins. diameter.

Fig. 2 gives a plan of the aerial system and the station buildings.

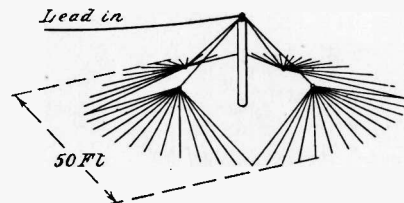


Fig. 3.—The earth system.

for the purpose of maintaining communication with the large Transatlantic and south-bound liners, at considerably greater distances. The chief ships operating on these long-distance routes were accordingly fitted with $1\frac{1}{2}$ -kw. valve transmitters and the necessary C.W. receiving gear, while Devizes, which was chosen for the shore station, was equipped with a 6-kw. valve set. Since that time the number of ships

The earth system consists of 56 plates, 6 ft. by 2 ft. 6 ins. by 24 s.w.g. copper, buried in the earth on the circumference of a circle 50 ft. in diameter. The connections from these plates are collected in four groups and led to a common terminal at the top of a