

but Hughes and Siemens are also being tried. The Post Office is fortunately placed for adapting machine working to wireless, as it has available all forms of apparatus, and the accumulated experience of many years in machine working over land lines and cables.

Emergency Stations

There are five small emergency stations worked by the Post Office when required in cases of

Department is naturally anxious to do all in its power to assist in the development of the art. Many, if not most, of the greatest discoveries in the practical application of science are due to the so-called amateur, and this indeed might be expected as the amateur worker has, *prima facie*, enthusiasm, the one indispensable attribute of the inventor. This enthusiasm of the non-professional worker is fully realised at St. Martin's-le-Grand; indeed, it could scarcely be

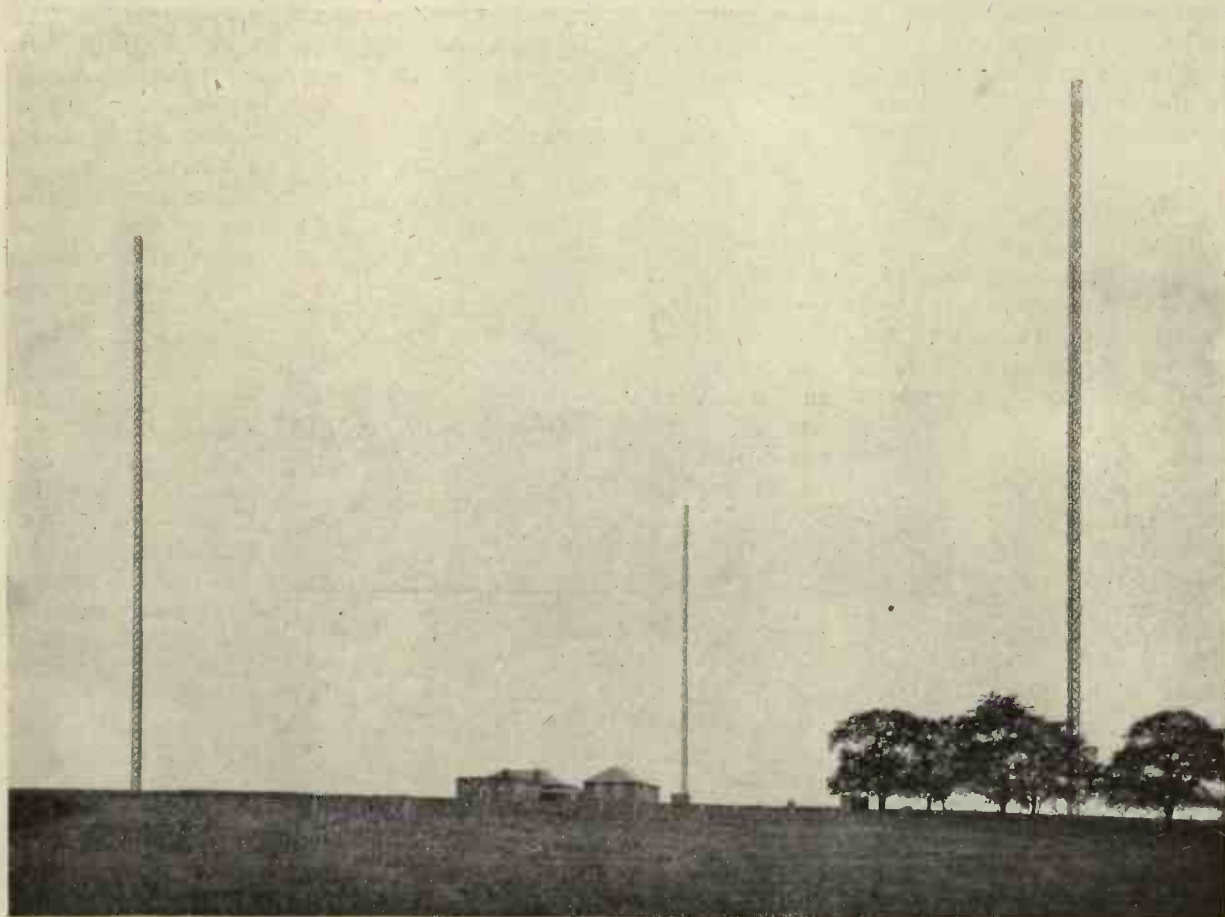


Fig. 4. The new station at Northolt, call sign GKB.

interruptions to cable communications with certain outlying islands, and provision is made for temporary portable stations being established at other places if required under similar circumstances. There are, in addition, three stations which are used for purely experimental purposes.

Amateur Wireless

As the Postmaster-General is the Statutory Authority for wireless in this country, the

otherwise, as enthusiasm leads to criticism—always healthy, if sometimes hasty. Criticism is the whip of progress, and in wireless, as in other matters, the Department never suffers from lack of it. The strategic, commercial, experimental, and broadcasting interests are not such as blend into one harmonious whole; they form a mixture, not a compound, and it is the duty of the Post Office to alter the prescription from time to time to suit the varying conditions.