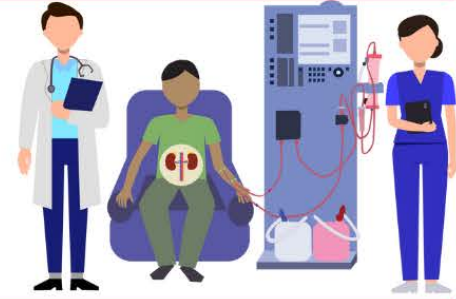

Hemodialysis Access

3 Types of access



When a patient is placed on Hemodialysis, there are 3 main types of access used.

- AV Fistula: When a vascular specialist connects an artery to a vein usually in the forearm or upper arm. This increases the vein to grow (mature) which then provides adequate access to blood vessels that are needed for hemodialysis. This access takes about 4-6 weeks to be ready for use.
- AV Graft: Similar to an AV Fistula, an AV Graft is a u-shaped piece of plastic that acts as a bridge and connects the artery and the vein and is where the dialysis needle is inserted. This access takes about 2-4 weeks to be ready for use.
- Central Venous Catheter: This access is provided by a soft plastic tube that is typically inserted into a central vein in your chest that leads to your heart. This type of access is for immediate use and is not a permanent access method.