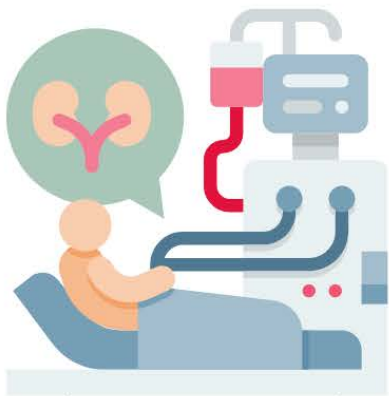

Peritoneal Dialysis/ PD Catheter Placement

Peritoneal Dialysis is another option for patients on dialysis. It can be done at home, even while you are asleep. A patient educator at a dialysis center can sit down and discuss all the many pros and cons with you to determine if this type of dialysis is best for you.



The PD catheter procedure is a minimally invasive procedure where a catheter is placed into a lining of your abdomen called the peritoneum, which is why it is called a peritoneal catheter. The main function of the catheter is to allow a cleansing fluid to enter the peritoneum, which then begins the filtration process. After a few hours, the fluid containing the waste is drained back out into a bag and discarded appropriately.