

# Casting the future with innovations

WORLD-CLASS PRECAST PRODUCTS





# Our Vision

“

Continue to be the leading innovator and manufacturer of high quality precast concrete products in decades to come

”

We will achieve this through **cutting edge technology, engineering excellence**, and **continuous quality improvement**.

We are fully committed to providing products and solutions of **consistently excellent quality** together with **prompt and reliable service** so as to achieve total customer satisfaction.



## About Us

**Bilcon Industries** is one of the leading manufacturers of precast concrete products in Singapore. We have been involved in supplying high quality concrete products since 1963 to meet the demand for infrastructure precast unit products. As early as the 70s, Bilcon Industries earned its reputation as a specialist in the manufacturing of spun reinforced concrete pipes.

The innovation never stops as we grow. Over the years, we had put in countless efforts in developing the production processes of high quality jacking pipes for trenchless tunneling. Our high strength jacking pipes are presently the system of choice for leading contractors in Singapore. Bilcon Industries is now cooperating with reputable technology firms such as Schlusserbauer Technology to increase our productivity through automation and introduce innovative precast civil products into the local market.





## PERFECT PIPE

*Revolutionary pipe consisting of a 360° HDPE ultra-resistant liner, connected with a watertight polypropylene PERFECT Connector which does not require welding.*

## REINFORCED CONCRETE PIPE

*Extensive range of pipes from nominal diameter of 300mm up to 3000mm, with options of using OPC, SRC or CAC.*



## PRECAST CONCRETE PRODUCTS

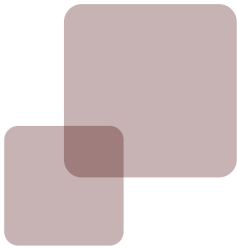
*We produce a wide range of precast concrete products for use in road works, telecommunication installations and plumbing works.*

## VITRIFIED CLAY PIPES

*We have been the sole agent and distributor of JPC-Intan's vitrified clay pipes in Singapore for the past 10 years.*



# Our Products



We manufacture precast products for sewer and plumbing works, as well as civil and telecommunication works.

All our precast products are designed and manufactured based on the latest authority requirements and standards to maintain the highest quality possible.

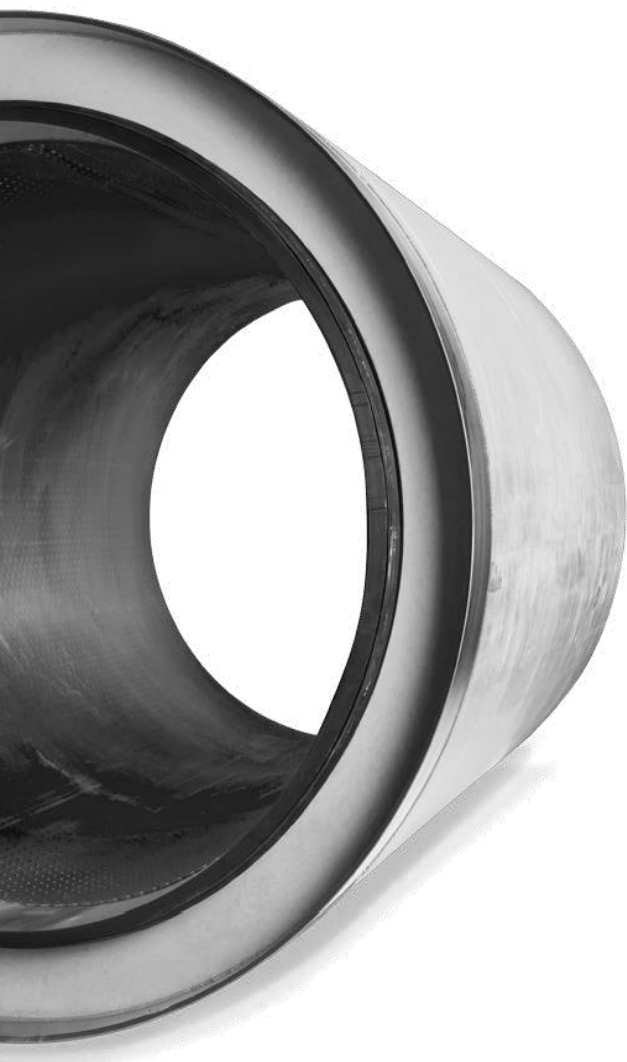
We are also capable of designing and manufacturing customised products according to your requirements.





# PERFECT PIPE

Bilcon Industries is proud to introduce the **PERFECT Pipe Technology** developed by Schlüsselbauer Technology into Singapore. The Perfect Pipe system concept evolved from the idea of revolutionising the entire wastewater sector. PERFECT Pipe combines the product benefits of a robust concrete pipe with resistant synthetic liners and marks the beginning of a new era in wastewater sewerage systems.

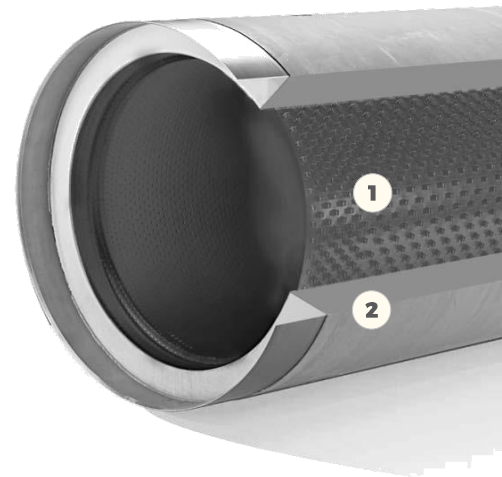


- High corrosion resistance and static load capacity, even in the case of high traffic loads, enables PERFECT Pipe to achieve a life-cycle of at least 100 years
- Watertight seal from pipe to pipe, thanks to the internal PERFECT Connector
- Highest level of efficiency and economic viability, in both open construction and pipe jacking
- No welding of HDPE liners at pipe joints required
- Optimised use of resources and safety during planning, production, installation and operation
- Versatile and individual application due to the availability of various pipe geometries



Laying a new pipe system is complex and costly. It is important that the pipe installation is as quick and easy as possible and that the pipes have a long life-cycle. Pipe systems from PERFECT Pipe stand out due to their optimum robustness and corrosion resistance regardless of whether they are used in open-trench construction or for pipe jacking.

PERFECT Pipe Technology combines the positive material characteristics of a robust concrete pipe and corrosion-resistant synthetic liners to offer quick, safe and, most notably, completely watertight installation thanks to the innovative HDPE connectors. These "PERFECT Connectors" allow the connecting of HDPE-lined concrete pipes with an internal diameter of 800mm and below that was not previously possible due to the limitations of man-entry into a confined space.

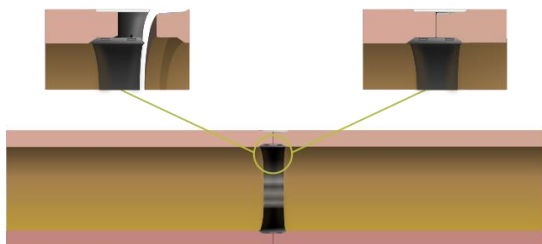


1. Corrosion-resistant PERFECT Liner made from HDPE
2. Permanent connection: there is no separation of the liner from the surrounding concrete, even with temperature fluctuations during storage, transport and installation

### PERFECT PIPE (Jacking) Length 2000mm

	Wall Thickness	Weight of Pipe	Allowable Jacking Force
DN300-DA530	115 mm	approx. 720 kg	approx. 180 Tons
DN400-DA650	125 mm	approx. 990 kg	approx. 250 Tons
DN500-DA730	115 mm	approx. 1070 kg	approx. 270 Tons
DN600-DA875	137,5 mm	approx. 1530 kg	approx. 400 Tons
DN700-DA960	130 mm	approx. 1630 kg	approx. 420 Tons
DN800-DA1052	126 mm	approx. 1760 kg	approx. 460 Tons

### JACKING PIPE:



### PERFECT Connector – Plug-in connector

- Easy installation of corrosion-resistant jacking pipe, including the no-men-entry nominal width spectrum – efficiency due to the synthetic connector
- Safe operation and installation – synthetic connectors with double tilting edge EPDM gaskets for the permanently watertight concrete-HDPE composite pipe system



# REINFORCED CONCRETE PIPE

## DOUBLE SPIGOT



We provide an extensive range of pipes from nominal diameter of 300mm up to 3000mm. All reinforced concrete pipes from Bilcon Industries can be produced with grade 40 concrete or higher based on your requirements. To fulfil the requirements of a modern, durable wastewater drainage system, we also provide the options of using Ordinary Portland Cement (OPC), Sulphate-Resisting Cement (SRC), as well as the Calcium Aluminate Cement (CAC).

## REBATED JOINT

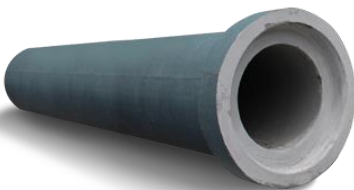


As of 2016, we offer the new PERFECT Pipe system by Schlüsselbauer from nominal diameter of 300mm up to 1200mm, with a 360° HDPE lining protection against corrosions.

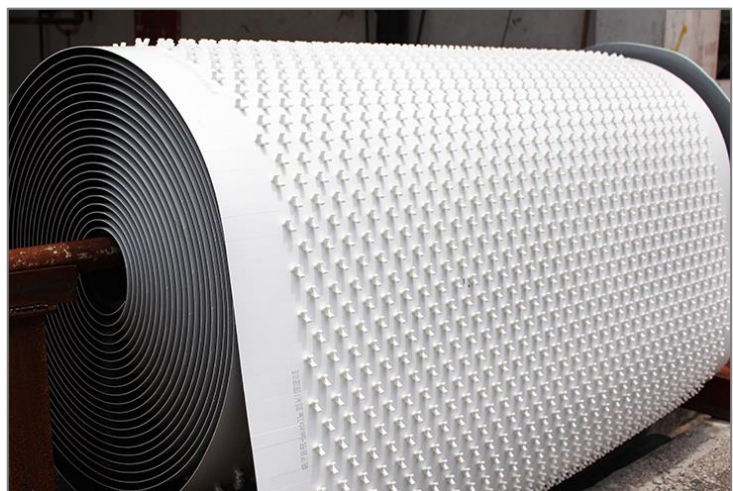
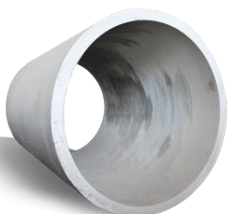
## AGRU HDPE

All the HDPE lining used for lined reinforced concrete pipe are imported directly from AGRU Kunststofftechnik GmbH in Austria. AGRU has been involved in developing a wide range of specially designed sheets made of PE, PP, and PVDF; offering long-term protection for many industrial applications.

## SPIGOT SOCKET



## PLAIN BUTT-ENDED





# PRECAST CONCRETE PRODUCTS

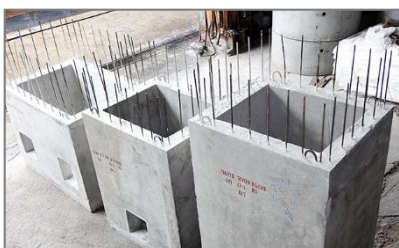
We produce a wide range of precast concrete products for use in road works, telecommunication installations and plumbing works.

We have been a long time supplier for many civil and plumbing contractors who undertake numerous project throughout Singapore for both public and private clients.

Over the years, Bilcon Industries has been able to offer high quality products at competitive prices to our customers through efficient production process, quality control and cost management. Through this, we were able to establish our reputation as a reliable local supplier of precast concrete products in Singapore and Malaysia.

## PLUMBING

- IC Sumps
- Septic Tanks
- Chamber Ring Top Slabs



## TELECOMMUNICATIONS

- MX1
- MX2
- MX3
- MX4
- MX5
- Concrete Base


## ROAD WORKS

- B-Channels
- C-Channels
- U-Drains
- Drop-Inlet Chambers
- Road Kerbs





# VITRIFIED CLAY PIPES



Bilcon Industries has been the sole agent and distributor of JPC-Intan Sdn Bhd vitrified clay pipes in Singapore for the past ten years. With over 80 years of experience in the ceramic industry, JPC-Intan manufactures an advanced range of vitrified clay products for sewerage, drainage, industrial and commercial applications.

Complemented with technologies from Europe and Japan, JPC-Intan's Vitrified Clay Pipes (VCP) and fittings are supplied in 2 jointing systems, Jo-Flex or Jo-Link, complying with MS1061 and BS-EN 295.



## PRODUCT RANGE AND JOINT AVAILABILITY

Normal Size	Joint System		Standard Length (M)
	Jo-Flex	Jo-Link	
DN 100	✓	✓	0.91, 1.00
DN 150	✓	✓	1.00, 1.25
DN 200	✓	✓	1.00, 2.00
DN 225	✓	✓	2.00
DN 250	✓	✓	2.00
DN 300	✓	✓	2.00
DN 375	✓	✓	2.00
DN 400	✓	✓	2.00
DN 450	✓	✓	2.00
DN 500	✓		2.00
DN 600	✓		2.00
DN 700	✓		2.00