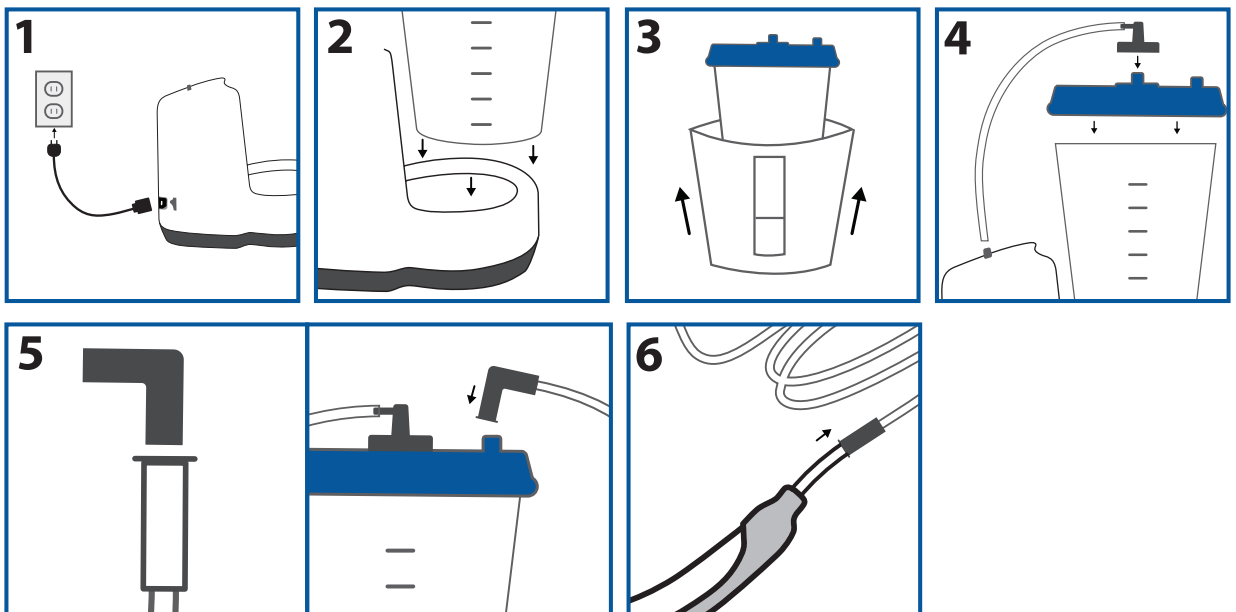


Directions for use

BD PureWick™ Urine Collection System and BD PureWick™ Flex Female External Catheter

PureWick™ Urine Collection System setup

1. Plug power cord into device outlet and into the A/C power outlet. Note: Make sure the power switch is turned off.
2. Place collection canister in the base and press down firmly on the lid of the device making sure lid is sealed.
3. Optional: Slip privacy cover onto the canister prior to placing canister into base.
4. Attach pump tubing (short tube) to the PureWick™ Urine Collection System connector port and the connector port on the collection canister lid.
5. Attach the elbow connector to the collector tubing (long tube) and connect elbow connector to the connector port on collection canister lid.
6. Connect other end of collector tubing (long tube) to a PureWick™ External Catheter.



PureWick™ Flex Female External Catheter placement

7. Before placing the product, curve it to fit the user's anatomy. This helps the product stay in place.
8. Have the user lie on their back with knees bent and thighs apart (frog legged) or on their side before placing the product. With their legs open, check the skin for irritation or breakdown, and clean the female anatomy.

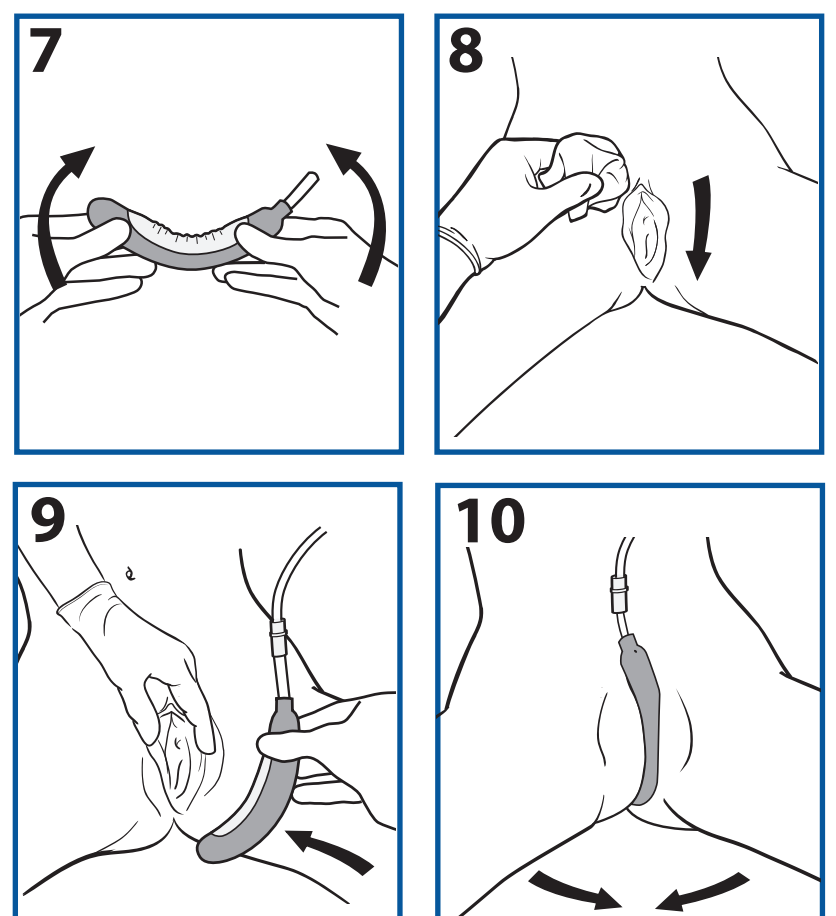
NOTE: If skin irritation or breakdown is seen, do not use the product.

9. Spread the inner labia and keep them spread while placing the product. With white wicking material side facing the user, place the bottom end of the product between the buttocks, but not as far back as to cover the anus. Gently tuck white wicking material side between the inner labia, directly against the urethra (where the urine comes out).

NOTE: Make sure the urethra is at least one inch down from the top of the white wicking material.

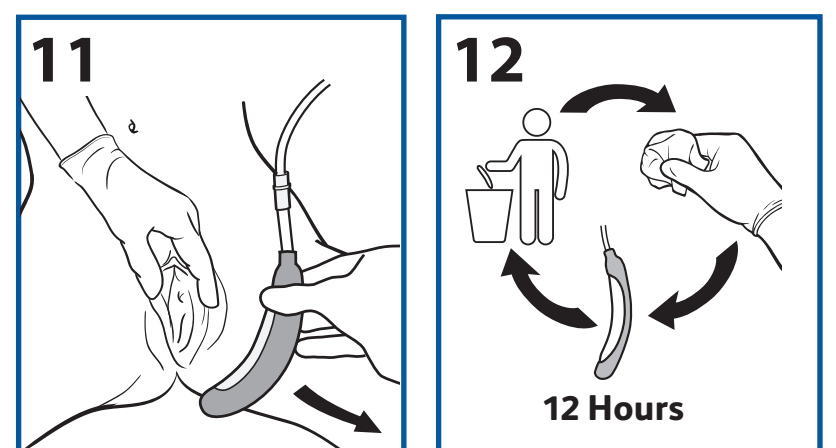
10. Make sure the inner labia wrap around the product and are not tucked under it. Once the product is in place, slowly close the legs and make sure the vent hole is not covered.

NOTE: For users with larger labia, less of the product will be visible. For users with smaller labia, more of the product will be visible.



PureWick™ Flex Female External Catheter removal and maintenance

11. Open the legs and gently spread the labia. Gently pull the product away from the body. Keep suction on while removing the product. After use, this product may be a potential biohazard. Dispose of in accordance with applicable local, state, and federal laws and regulations.
12. Replace the product every 12 hours or if soiled with feces or blood.



PureWick™ System for women



Indications: The PureWick™ Urine Collection System is to be used with the PureWick™ External Catheters which are intended for non-invasive urine output management.

Contraindications: Do not use the PureWick™ Urine Collection System with PureWick™ Female External Catheters on individuals with urinary retention.

Warnings: The PureWick™ Flex Female External Catheter is designed for single-use only. Trying to wash, sanitize or reuse it may lead to risk of infection or illness. This may damage the product and materials. The product may not work and cause injury or illness. To avoid potential skin injury, never push or rub the product against the skin during placement or removal. Do not block airflow to the product (e.g., blocking the vent hole, bedpan, barrier creams). Do not insert the product into vagina, anus, or other body orifice. Stop use if an allergic reaction occurs. After use, this product may be a potential biohazard. Dispose of in accordance with applicable local, state, and federal laws and regulations. Do not use on users with frequent episodes of stool incontinence without a fecal management system in place. Do not use on users with skin irritation or breakdown at the site. Use with caution on users who had recent surgery of the external female anatomy. Do not use on users with moderate/heavymenstruation who cannot use a tampon.

Precautions: Use with caution on users who are agitated, combative or uncooperative and might remove the product. Do not use barrier cream on the surfaces where the product will be placed. Barrier cream may reduce suction. Keep suction on while removing the product. This helps prevent leaks during removal.

Safety and Warnings: Always unplug PureWick™ Urine Collection System before cleaning or when not in use. **Do not immerse the PureWick™ Urine Collection System in water.** As with most electrical devices, electrical parts in this system are electrically live even when the power is off. To reduce the risk of electric shock, if the PureWick™ Urine Collection System falls into water, unplug immediately. **Do not reach into the water to retrieve it.** Contains small parts that may cause choking. Keep out of reach of children. Keep cords and tubing out of the reach of children to avoid the risk of strangulation. Discontinue use if an allergic reaction occurs. Not recommended for users who are experiencing skin irritation or skin breakdown in device contact areas. WARNING: This device should not be used in oxygen rich environments or in conjunction with flammable anesthetics. If the PureWick™ Urine Collection System is dropped or tipped over spilling urine, unplug the unit and carefully inspect for loose or damaged parts before resuming use. Contact Customer Support at 1-888-201-1586 if any damage is observed. The pump tubing connecting the PureWick™ Urine Collection System to the collection canister may experience light condensation inside the tube. This is not unusual and does not affect function. However, if urine or water has streamed into the pump, discontinue use and contact Customer Support at 1-888-201-1586. Although the canister can hold up to 2000cc (mL), the urine should be emptied regularly from the collection canister before volume reaches 1800cc (mL). Failure to empty canister before urine overflow may cause damage to the PureWick™ Urine Collection System and is not covered under the warranty. It is important that the port connections be connected correctly for proper operation of the PureWick™ Urine Collection System. Use of this equipment next to or stacked with other equipment should be avoided because it could result in improper operation. If such use is necessary, this equipment and the other equipment should be observed to verify that they are operating normally. Portable radio frequency (RF) communications equipment (including peripherals such as antenna cables and external antennas) should be used no closer than 12 inches (30cm) to any part of the PureWick™ Urine Collection System, including cables specified by the manufacturer. Otherwise, degradation of the performance of this equipment could result. Use only PureWick™ Urine Collection System accessories with this device. Incompatible parts or accessories can result in degraded performance and will void the warranty. Do not use accessories past expiration date indicated on package labeling. Use only the PureWick™ Urine Collection System A/C power cord with the device. Use of an alternate consumer style A/C power adapter or an extension cord may cause damage to device and electrical shock or injury and will void the warranty. Do not place PureWick™ Urine Collection System or its cord across walkways creating a tripping hazard. For PW200: The battery cells used in this device may present a fire or chemical hazard. To minimize the risk of damaging the battery inside the PureWick™ Urine Collection System, do not use the device outside the indicated operating temperature range of 41°F - 104°F (5°C - 40°C). The battery is not intended to be replaced; replacement could result in a hazard. **To reduce the risk of electrical shock or injury, do not disassemble this unit. No modification of this equipment is allowed.**