



**WEIJING®**

**Wedge Breaker**



**SUZHOU WEIJING AUTOMATION CO., LTD**



## WEIJING >>>

WEIJING AUTOMATION, established in 2008, is a foundry machine manufacturer dedicating to provide professional machines, services and solutions with premium quality and competitive price for global foundries.

WEIJING has two premises. One is in Suzhou, another is in Jining. Total area is up to 9000 SQM.

WEIJING foundry machines covers degating wedge, runner cutter/breaker, degating hammer, CNC grinding machine, Auto tilting pouring machine and Auto molten metal transferring machine.

By Jan 1st. 2026, WEIJING already provided 1244 wedge breakers, 66 runner cutters, 241 degating hammers, 505 grinding machines, 91 pouring machines and 29 transporting machines to worldwide foundries, which already cover up to 31 countries.

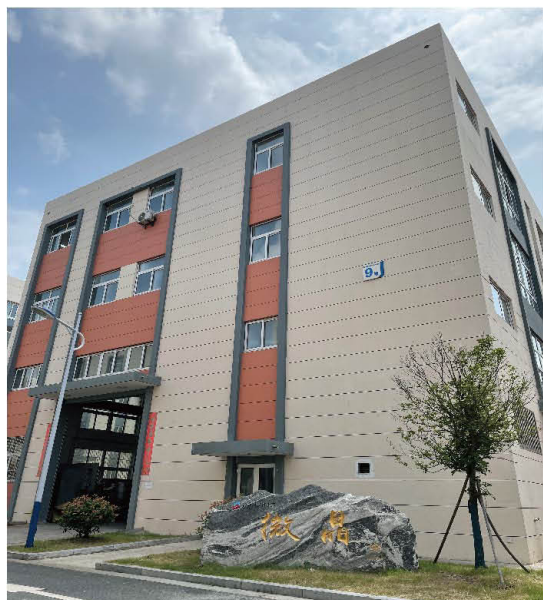
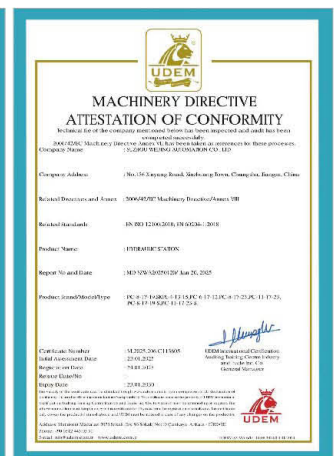
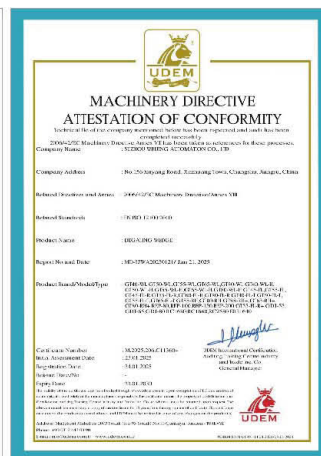
Positive action, honest communicating, transparent collaboration, is WEIJING Conduct Code.

WEIJING people firmly believe from the heart THE MATCHED IS THE BEST.

## Patents >>>



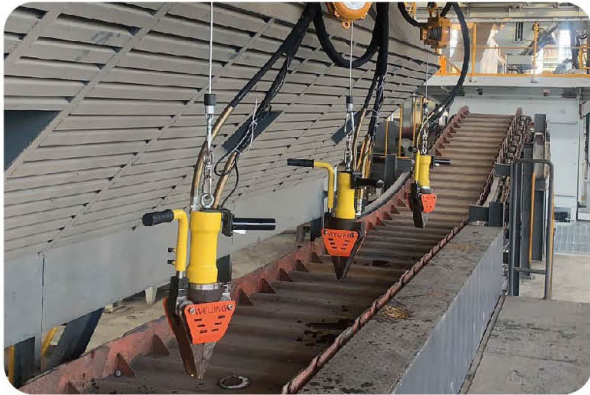
## Certificates >>>



Suzhou premises



Jining premises



Vertical Wedge



Horizontal Wedge



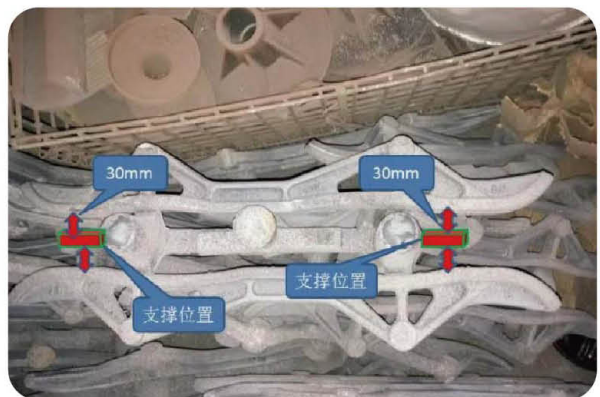
Runner Cutter



Sleeve Breaker



Hydraulic Station

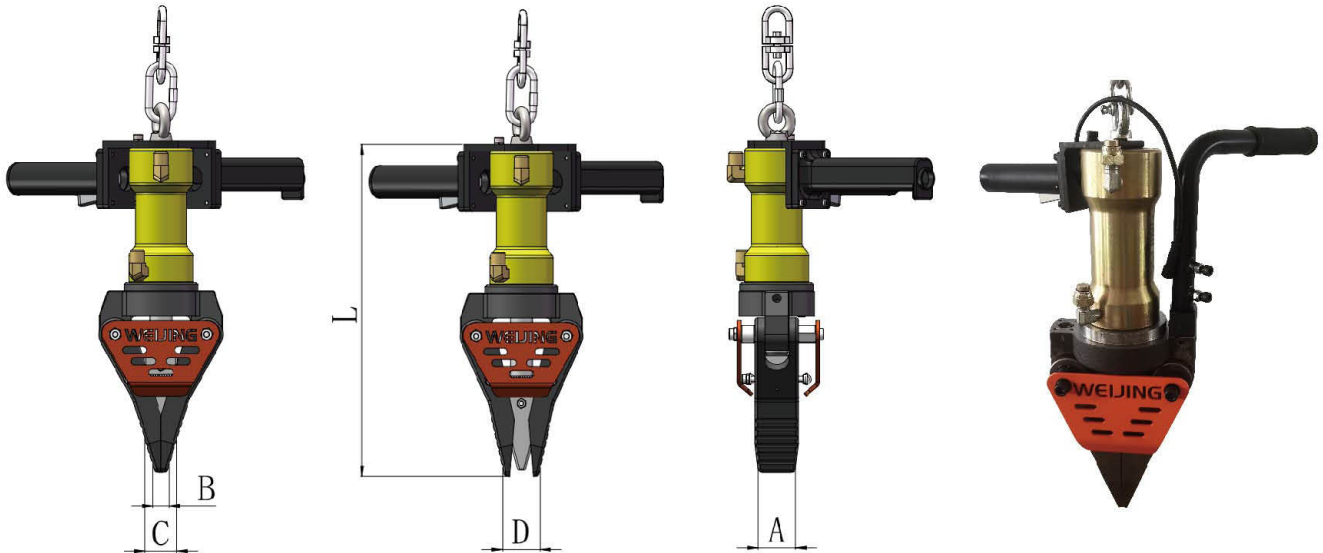


Supporting Points





**WEIJING GT-WL type wedge is born for degating castings at Waist Level.**



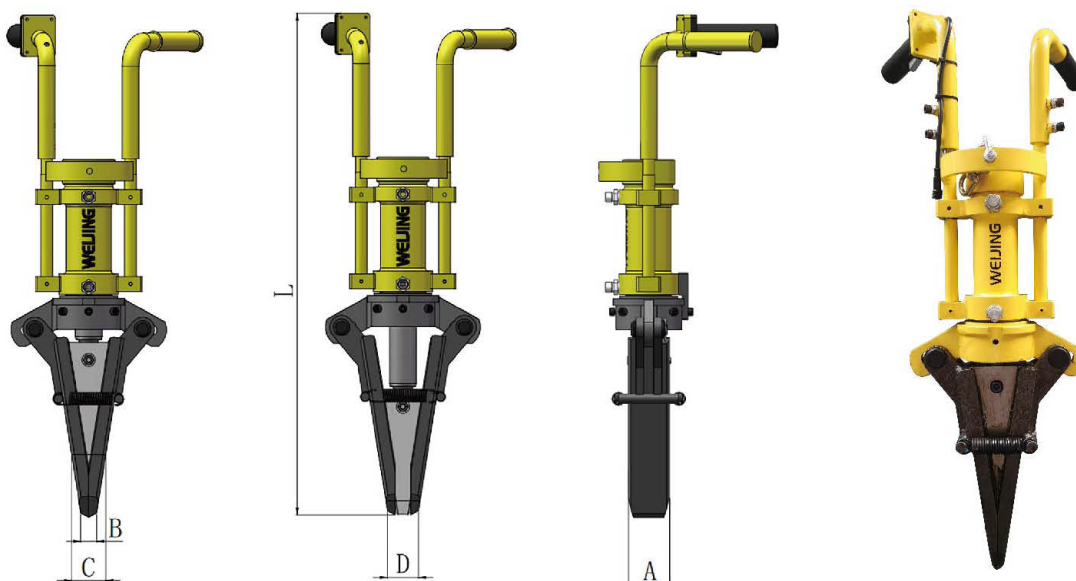
| Models of WL Type | Force (T) | Section Area (mm*mm) | Weight (KG) | Wedge Dimensions: mm |    |    |    |       |
|-------------------|-----------|----------------------|-------------|----------------------|----|----|----|-------|
|                   |           |                      |             | L                    | A  | B  | C  | D     |
| 9T-WL             | 9T        | 15*15                | 13          | 380                  | 50 | 14 | 48 | 34/40 |
| 16T-WL            | 16T       | 35*40                | 27          | 495                  | 75 | 21 | 71 | 53/65 |
| 30T-WL            | 30T       | 55*60                | 30          | 499                  | 75 | 21 | 71 | 52/63 |
| 50T-WL            | 50T       | 60*65                | 43          | 584                  | 75 | 21 | 71 | 59/62 |

### Features & values:

- No central "tongue" protruding enables vertical operating more perfect.
- Wider side blades ensure each breaking more stable and long lifetime.
- Short operating handles make waist height operating more flexible.
- Double-sealing inside guarantee you no leakage.

Notes: If your minimal insertion space is smaller than standard, we can customize the side blades for you.  
Please check with WEIJING. Thanks

**WEIJING GT-FL type wedge is designed to degate casting at Foot Level.**



| Models of FL Type | Force (T) | Section Area (mm*mm) | Weight (KG) | Wedge Dimensions: mm |    |    |    |       |
|-------------------|-----------|----------------------|-------------|----------------------|----|----|----|-------|
|                   |           |                      |             | L                    | A  | B  | C  | D     |
| 9T-FL-T           | 9T        | 15*15                | 15          | 700                  | 50 | 14 | 48 | 34/40 |
| 12T-FL            | 12T       | 20*30                | 29          | 830                  | 69 | 18 | 52 | 43    |
| 16T-FL            | 16T       | 35*40                | 32          | 840                  | 69 | 28 | 62 | 52    |
| 16T-FL-T          | 16T       | 35*40                | 32          | 788                  | 75 | 21 | 71 | 53/65 |
| 25T-FL-T          | 25T       | 55*60                | 35          | 801                  | 75 | 21 | 71 | 52/63 |

## Features & values:

- No central "tongue" protruding enables vertical operating more perfect.
- Anti-skid & wide side blades ensure each breaking more stable and long lifetime.
- Long operating handles can protect operator's back better.
- Double-sealing inside guarantee you no leakage.

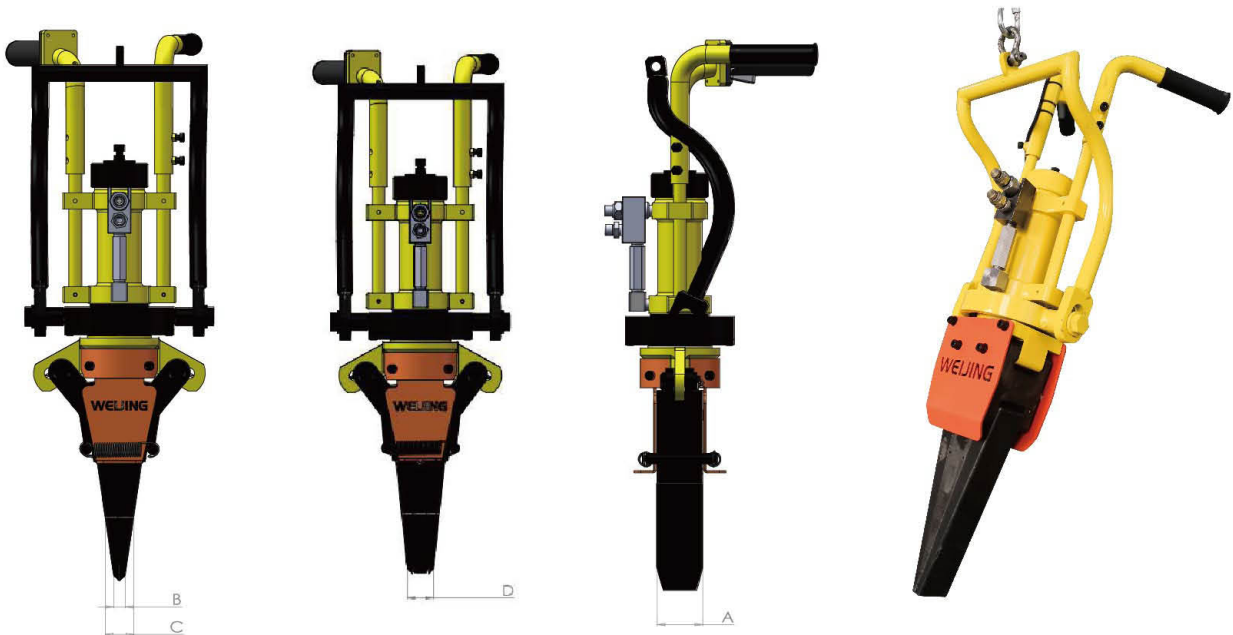
■ Notes: GT-FL-T is designed to degate stacked parts on the ground.

If your minimal insertion space is smaller than standard, we can customize the side blades for you.

Please check with WEIJING. Thanks



GT-FL-R type wedge is for horizontal & vertical operation at Foot Level.



| Models of FLR Type | Force (T) | Section Area (mm*mm) | Weight (KG) | Wedge Dimensions: mm |    |    |    |    |
|--------------------|-----------|----------------------|-------------|----------------------|----|----|----|----|
|                    |           |                      |             | L                    | A  | B  | C  | D  |
| GT45-FL-R          | 12T       | 20*30                | 34          | 828                  | 69 | 18 | 52 | 44 |
| GT55-FL-R          | 16T       | 35*40                | 37          | 819                  | 69 | 28 | 62 | 50 |
| GT60-FL-R          | 20T       | 55*55                | 54          | 883                  | 60 | 21 | 75 | 42 |
| GT80-FL-R          | 35T       | 60*65                | 59          | 883                  | 60 | 21 | 75 | 42 |

### Features & values:

- No central "tongue" protruding during the breaking enables vertical operating more perfect.  
Unique rotatable suspension frame makes vertical or horizontal operation flexibly.
- Anti-skid & wide side blades ensure each breaking more stable and long lifetime.
- Long handles can protect operator's back better for foot height operation.
- Double-sealing inside guarantee you no leakage.

Notes: If your minimal insertion space is smaller than standard, we can customize the side blades for you.

Please check with WEIJING. Thanks

**GT-RH+ type wedge is for horizontal operation at waist height or foot level**  
**No matter no central "tongue" protruding or with central "tongue" protruding**



| Models of FLT Type | Force (T) | Section Area (mm*mm) | Weight (KG) | Wedge Dimensions: mm |    |    |    |    |
|--------------------|-----------|----------------------|-------------|----------------------|----|----|----|----|
|                    |           |                      |             | L                    | A  | B  | C  | D  |
| GT55-RH+           | 16T       | 35*40                | 39          | 729                  | 50 | 21 | 64 | 41 |
| GT63-RH+           | 20T       | 50*55                | 25          | 513                  | 50 | 19 | 60 | 39 |
| GT80-RH+           | 35T       | 60*65                | 38          | 751                  | 40 | 14 | 66 | 34 |

## Features & values:

- Different operating handles designed from proven practical frontline experience.  
No central "tongue" protruding or central wedge protruding both are available.
- Double-sealing inside guarantee you no leakage.

■ Notes: please tell WEIJING your degating height and which one central "tongue" protruding you prefer when you inquiry.  
 If your minimal insertion space is smaller than standard, we can customize the side blades for you.  
 Please check with WEIJING. Thanks



**Runner Cutter is born for shearing runners more easily and high efficiently**



| Type   | Force (T) | Maximal runner size (Ø) | Circle time | Weight (KG) | Cutter dimensions | Remarks           |
|--------|-----------|-------------------------|-------------|-------------|-------------------|-------------------|
| RC1650 | 16T       | Ø40                     | 12/min      | 55          | 725*378*390       | For straight bars |
| RC1660 | 16T       | Ø40                     | 12/min      | 55          | 735*378*390       | For curved bars   |
| RC2580 | 25T       | Ø60                     | 8/min       | 66          | 767*683*428       |                   |

### Features & values:

- Quite easy to shear runners into small pieces before throwing back to the furnace for saving more energy and protecting our planet better.
- Different operating handles designed from proven practical frontline experience.
- Double-sealing inside guarantee you no leakage.

■ Notes: please tell WEIJING your cutting height when you inquiry.





**Sleeve Breaker is born for breaking exothermic sleeves super easily**



| Type    | Force (T) | Max. neck size (mm) | Max. riser diameter (mm) | Weight (KG) | Remarks |
|---------|-----------|---------------------|--------------------------|-------------|---------|
| ERB1640 | 16T       | 40                  | 80                       | 31          |         |

### Features & values:

- Double sealing inside guarantee you no leakage.
- Two hands operation ensure you absolute safety.
- Customized sleeve holes promise you perfect experience.



**Right cooling system ensures you 7\*24 hours running.**  
**Automatic hibernating saves power for you and protects our planet better.**



| Model                       |       | FL            | RH            | FL-R          | WL            |
|-----------------------------|-------|---------------|---------------|---------------|---------------|
| Voltage                     | V     | 380V 50/60z   | 380V 50/60z   | 380V 50/60z   | 380V 50/60z   |
| Output Power                | KW    | 7.5           | 11            | 7.5           | 11            |
| Low-pressure Flow           | L/Min | 19            | 23            | 19            | 23            |
| Low Pressure                | Mpa   | 18            | 18            | 18            | 18            |
| Boost Pressure              | Mpa   | 45            | 45            | 45            | 45            |
| Oil Tank Capacity           | L     | 190           | 190           | 190           | 190           |
| Effective Tank Capacity     | L     | 150           | 150           | 150           | 150           |
| Hydraulic Oil               |       | ISO(VG46)     | ISO(VG46)     | ISO(VG46)     | ISO(VG46)     |
| Oil Temperature             |       | 10-60°        | 10-60°        | 10-60°        | 10-60°        |
| Cooling Way                 |       |               |               | S             | S             |
| Air Cooling S Water Cooling |       |               |               |               |               |
| Weight                      | KG    | 310           | 350           | 325           | 365           |
| Dimensions (L*W*H)          | mm    | 1110*615*1205 | 1110*615*1205 | 1110*745*1205 | 1110*745*1205 |



### Standard functions:

- cycle counting, oil level indication, air cooling

### Unique features:

- two working pressure models:  
low pressure for central "tongue" moving high efficiency, high pressure for breaking objects gently.
- two pressure models can switch automatically according to presetting.
- best balance between high degating efficiency and long lifetime of inner sealings.

### Outstanding durability:

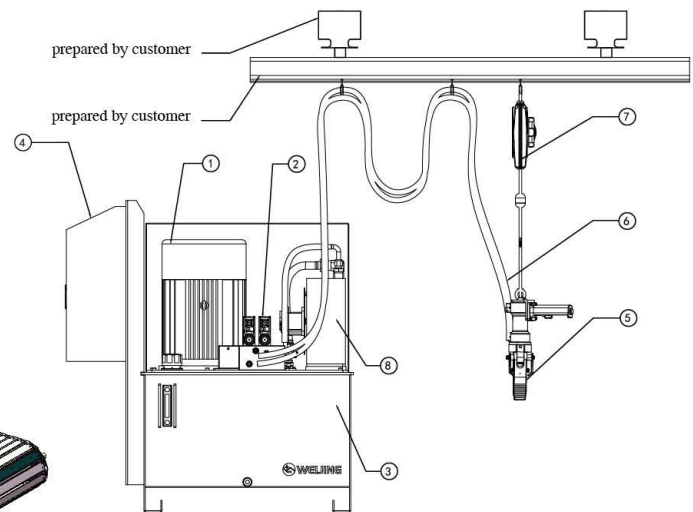
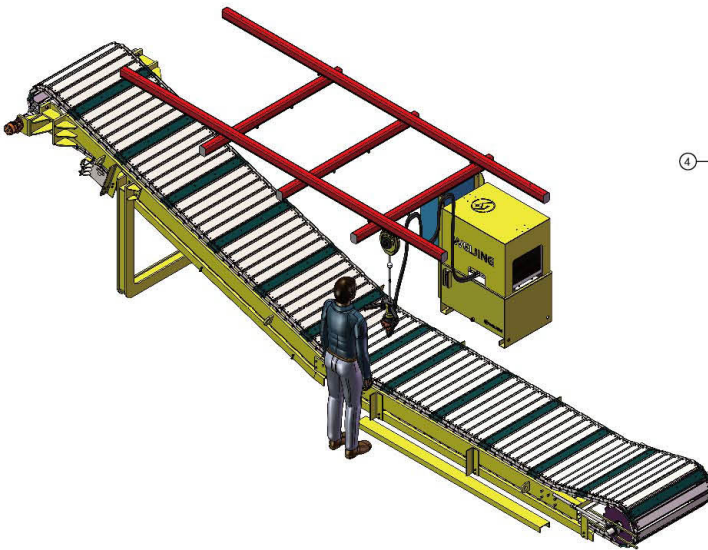
- International famous brand internal gear pump guarantees you outstanding durability and super long lifetime.
- 3 million cycle time guaranteed for low pressure pump, 8 million cycle time guaranteed for booster pump, 20 million cycle times guaranteed for solid-state relays inside.
- Solid-state relays inside ensure no any sparks in dust environment for absolute safety.
- two cooling options available ensure you 7\*24 hours running.

### Protecting our planet:

- Automatic hibernating saves electric power for foundries and protect our planet better.





**Layout And Key Part Description**

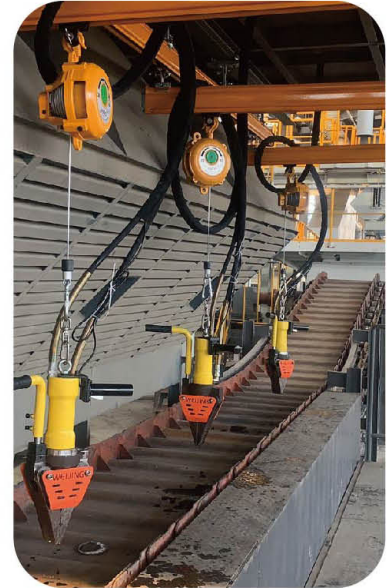
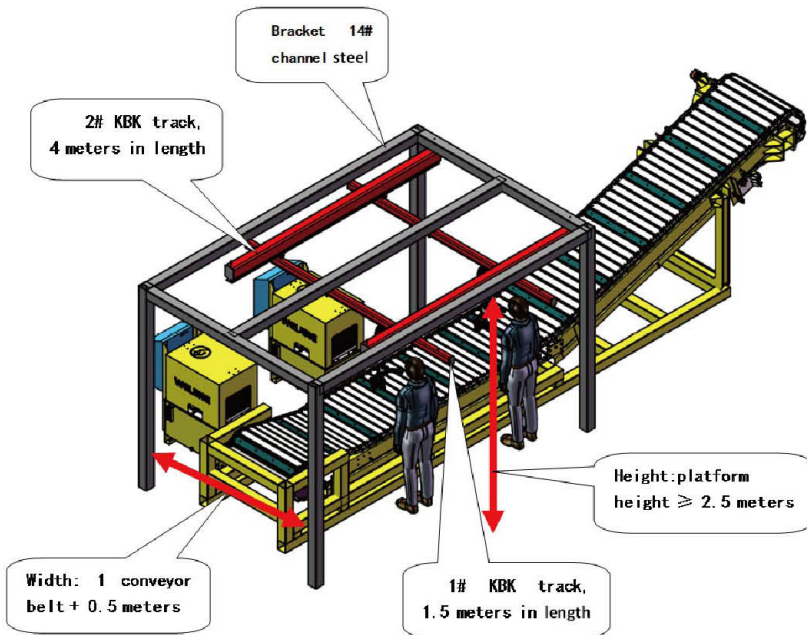
| No | Description    | Qty |
|----|----------------|-----|
| 1  | Motor and Pump | 1   |
| 2  | Valve block    | 1   |
| 3  | Oil Tank       | 1   |
| 4  | Control System | 1   |
| 5  | Wedge          | 1   |
| 6  | Oil Hose       | 2   |
| 7  | Balancer       | 1   |
| 8  | Cooling system | 1   |

■ Notes: The layout is just for reference. WEIJING will offer you the right proposal according to your site situation.

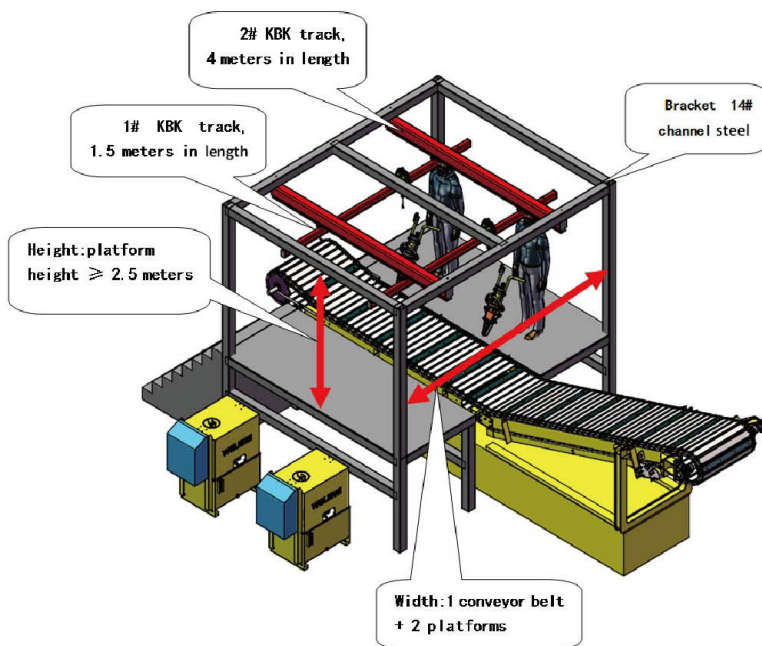


## Installation way

### WL Type Wedge Breaker Installation



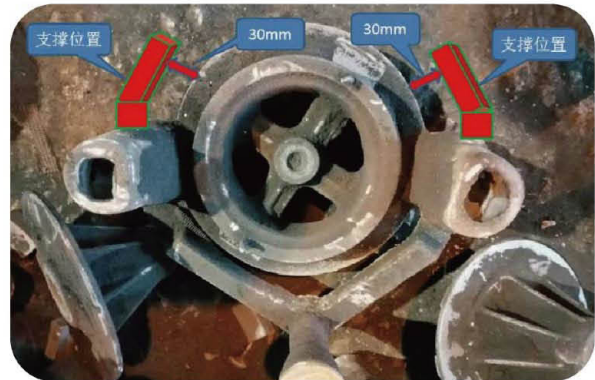
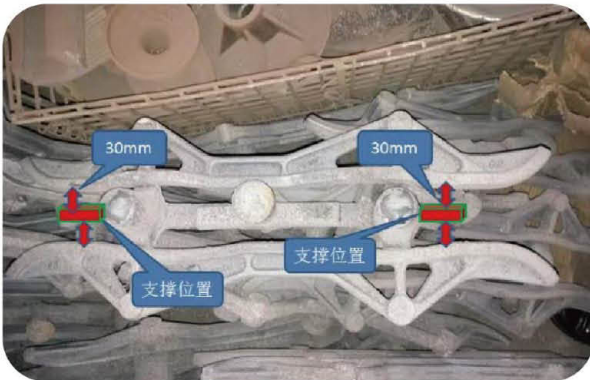
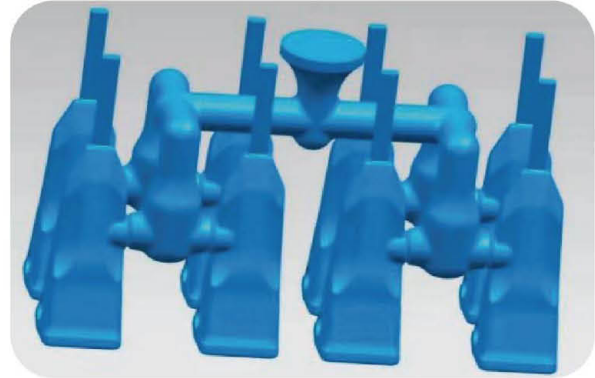
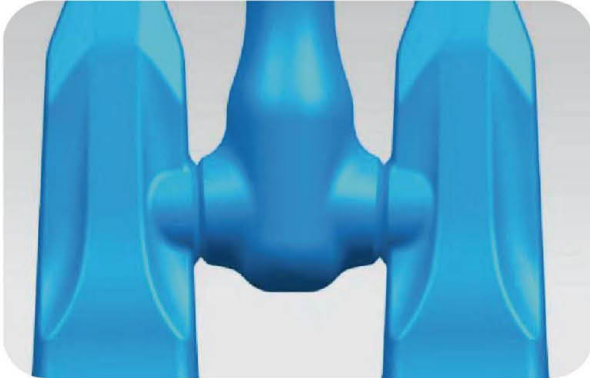
### FL Type Wedge Breaker Installation







## Riser/Runner Design Suggestion



## Reasons and benefits:

- Should keep the room for wedge to insert, and should have two supporting points for two side blades to break the risers.
- The area of supporting points should be bigger than neck size of risers for avoiding casting damaging.





| Foundry Name   | Location     |
|--|--------------|
| Fujiwa Machinery Industry (Hubei) Co., Ltd.                | China        |
| Hubei Dongbei Foundry Co., Ltd.                            | China        |
| Jiangsu Hengli High Pressure Hydraulic Cylinder Co., Ltd.  | China        |
| Jiangsu Hengli Hydraulic Co., Ltd.                         | China        |
| Lumeng (Rizhao) Instrument Technology Co., Ltd.            | China        |
| Luoyang Gucheng Machinery Co., Ltd.                        | China        |
| Shaanxi Huaxing Foundry Co., Ltd.                          | China        |
| Shandong Huaruifeng Machinery Co., Ltd.                    | China        |
| Shandong Huiyu Precision Machinery Co., Ltd.               | China        |
| Shandong Lide Braking Technology Co., Ltd.                 | China        |
| Shandong Longma Heavy Industry Precision Casting Co., Ltd. | China        |
| Shandong Zhujin Engineering Testing Co., Ltd.              | China        |
| Shanxi Longcheng Magang Co.                                | China        |
| Shanxi Longcheng Malleable Iron Co., Ltd.                  | China        |
| Suzhou Central Forgeable Machinery Co., Ltd.               | China        |
| Yongsheng Heavy Industry Co., Ltd.                         | China        |
| World Known Mfg. Co., Ltd                                  | Taiwan,China |
| SARL EURO MOTEUR   | Algeria      |
| Fundiciones San Justo SA                                   | Argentina    |
| Azertexnolayn LLC  | Azerbaijan   |
| FUNDICAO REGALI BRASIL LTDA                                | Brazil       |
| ZMM STOMANA JSC  | Bulgaria     |
| Himcast  | India        |
| PLXF   | Malaysia     |
| GUSS-EX Sp.zo.o.   | Poland       |
| ELMASH LLC   | Russia       |
| DAEHAN METAL MFG.CO.,LTD                                   | South Korea  |
| KAYDOSAN CO.   | T ü rkiye    |
| Vanguard Foundry   | UK           |
| Poltava Quartz Glass Plant LTD                             | Ukraine      |
| Star Pipe USA  | USA          |
| Lioho Automotive Parts Co., Ltd                            | Vietnam      |

By Jan 1st, 2026, WEIJING Wedge Breaker have covered 16 countries, including Europe and America

# WEIJING DEGATING WEDGE, YOUR WISE CHOICE



## Suzhou Weijing Automation Co., Ltd

Address: Building 9th, No. 156, Xinyang Avenue, Chuangjin  
Industrial Park, Changshu, Suzhou, China

Tel: +86 0512- 5153 7059

Fax: +86 0512- 5153 7059

Mobile: +86 153 0612 4775

E-mail: roc.hang@weijingsz.com

Website: www.weijingsz.com



WhatsApp



LINE



WeChat