



# **INSTALLATION, OPERATION & MAINTENANCE MANUAL**

## **MODEL E6CH1**

### **6-POSITION TIMER CONTINUOUS CYCLE WITH HOLD-OFF**

**ELECTRONIC DESIGNS INC.  
1683 Rock Hill Highway  
Lancaster, SC 29720  
Phone: 704-545-1439 • Fax: 803-675-5528  
Website: [www.edi-usa.com](http://www.edi-usa.com)  
E-mail: [info@edi-usa.com](mailto:info@edi-usa.com)**

## **GENERAL DESCRIPTION – MODEL E6CH1:**

EDI's solid state timers are capable of switching six (6) independent outputs. Each of the outputs has a switching capacity of 1 Amp at 120 VAC. By relocating the program wire from position # 6 (on the Timer) to the number of positions desired, the timer will pulse only from 1 through the programmed number.

The Model E6CH1 is a continuous cycle timer, pulse rate is set and adjusted by the operator via OFF-ADJ and ON-ADJ potentiometers to preferred time settings. The timer cycling can be stopped or placed on "Hold" by energizing the timer Hold-Off circuit. This is accomplished by connecting the Hold-Off terminals together (Terminal 8 to Terminal 9). Isolation circuitry is incorporated into the timer which allows the Hold-Off function to be accomplished from a remote location.

## **FEATURES:**

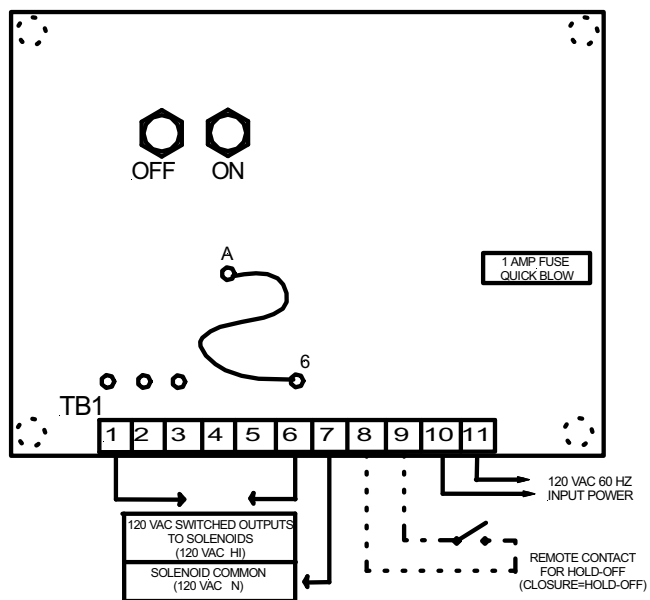
- 120 VAC 50/60 Hz, Single Phase
- 1 amp maximum capacity per output
- 1 amp fuse protection
- All solid state industrial quality construction
- Hold-Off capability, either Local or Remote.
- LED indicates timer operation
- Line Surge Protection
- Start on Position 1
- Pilot lamp indicates power on
- Adjustable ON time 50 - 150 ms
- Adjustable OFF time 3 - 70 seconds
- UL Recognized to US and Canadian Standards under File E 60685
- Two year Factory warranty against parts or manufacturing defects.

## **GENERAL MOUNTING AND WIRING:**

1. Timer is to be mounted in a dust tight and water tight NEMA rated enclosure.
2. It is recommended to place conduit openings/holes in bottom of enclosure to prevent condensate or moisture from entering enclosure.
3. Mount the timer enclosure in a vibration-free area. (Use isolators to mount timer to sub plate.)
4. Run supply wiring to the timer, 120VAC, 1 Phase, 50/60 Hz from the line circuit protector.
5. Run wiring from the timer to the pilot valve box.

## **ELECTRICAL WIRING:**

1. Connect 120VAC supply to HI (TERMINAL 11) and NEUTRAL (TERMINAL 10).
2. Connect one side of each valve to the COMMON (TERMINAL 7), sequentially.
3. Connect the other side of each solenoid valve to the SWITCHED OUTPUTS (TERMINAL 1 through 6), sequentially.
4. Set OFF ADJ potentiometer to desired time between pulses.
5. Set ON ADJ potentiometer to desired time duration of each pulse.
6. Connect Hold-Off Circuitry if needed to Terminals 8 and 9.



E6CH1, 6 POSITION TIMER  
CONTINUOUS CLEANING WITH  
OPTION FOR HOLD-OFF

#### NOTES:

1. Adjust "ON" and "OFF" times on the Timer.
2. Program wire should be placed in desired output position.
3. For Hold-Off Mode:  
Timer starts cycling when HIGH set point is reached and continues until ΔP falls. Signal is from external source.
4. Use of vibration isolators recommended for mounting timer to back plate.

PHYSICAL DIM.  
5" X 5.25"  
MOUNTING DIM:  
4.5" X 4.75"

