



CLEAN-ON DEMAND TIMER

MODEL E10MH1

MODEL E20MH1

MODEL E40MH1

General Description

The E-MH Series Timers are a combination “Clean on Demand” and hold-off timer. They are capable of switching 10 (E10MH1), 20 (E20MH1) or 40 (E40MH1) outputs.

The “Clean on Demand” feature utilizes a proportional OFF time control by means of a 4-20 mA signal that is generated by the Delta P transmitter. The OFF time is determined by comparing the actual differential pressure (DP signal) with a preset desired level (timer setting). The timer automatically adjusts the pulse rate as needed in order to maintain the preset level.

An illuminated digital readout indicates the next valve position to be fired.

What does it all mean? With proportional cleaning, your air usage is minimized and your filter bags are only pulsed when needed. This means a savings in air usage and a longer bag life.

Model

E10MH1

E20MH1

E40MH1

Dimensions

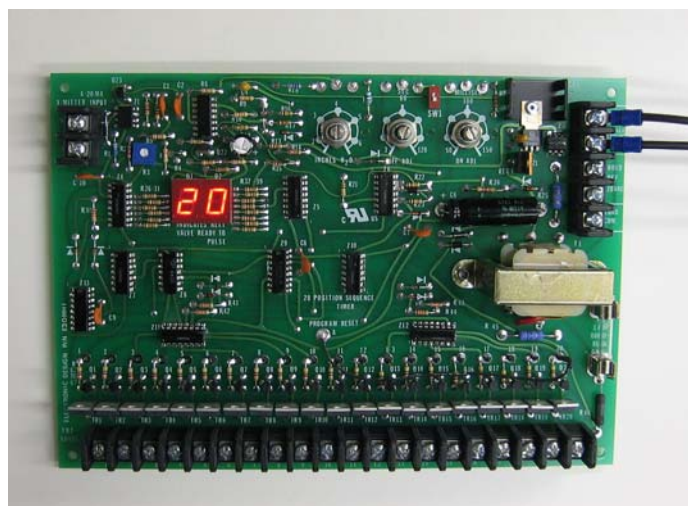
6.5" wide x 5.0" high

9.5" wide x 6.5" high

10.5" wide x 6.5" high

Features

- Mikropul solid state sequential timers
- Models: E10MH1, E20MH1, E40MH1
- LED readout indicates next valve ready to fire
- Proportional cleaning via 4-20 mA signal
- Remote operating capability
- Adjustable On/Off times
- Electrical: 120 VAC, 50/60 Hz
- One year warranty against defects in workmanship
- UL Recognized, File No. E60685
- Certified for Canada
- Made in the USA



Model E20MH1 Shown

EDI is the exclusive manufacturer of MIKROPUL Timer Boards since 1972

ELECTRONIC DESIGNS, INC.

1683 Rock Hill Highway • Lancaster, SC 29720

Phone: (704) 545-1439 • Fax: (704) 545-8345

Website: www.edi-usa.com

Email: info@edi-usa.com