

**DONALD\_BROWN-1**

**Pack out/ Storage/Pack back**

**General Items**

DESCRIPTION	QUANTITY	UNIT	RCV	AGE/LIFE	COND.	DEP %	DEPREC.	ACV
1. Contents Evaluation and/or Supervisor/Admin - per hour <i>1/2 day of supervisor time to oversee and coordinate pack out of the home, 1/2 day for the unpack and reset coordination.</i>	8.00	HR	64.00	512.00	0/NA Avg.	0%	(0.00)	512.00
2. Debris disposal * <i>Disposal of used wrap, packing materials, and boxes.</i>	1.00	EA	55.00	55.00	0/NA Avg.	NA	(0.00)	55.00
<b>PACKING MATERIALS</b>								
3. Provide box, packing paper & tape - medium size	18.00	EA	4.18	75.24	0/NA Avg.	0%	(0.00)	75.24
4. Provide wardrobe box & tape - large size	6.00	EA	25.10	150.60	0/NA Avg.	0%	(0.00)	150.60
5. Provide box, packing paper & tape - large size	10.00	EA	6.01	60.10	0/NA Avg.	0%	(0.00)	60.10
6. Provide stretch film/wrap	1.00	RL	27.70	27.70	0/NA Avg.	0%	(0.00)	27.70
7. Provide furniture heavyweight blanket/pad	10.00	EA	18.26	182.60	0/NA Avg.	0%	(0.00)	182.60
<b>MOVING</b>								
8. Moving van (21'-27') and equipment - per day	1.00	EA	259.64	259.64	0/NA Avg.	0%	(0.00)	259.64
9. Content Manipulation charge - per hour <i>1/2 day of labor to have 2 techs pack the moving van once the furnishings are boxed and moved out of the home, and 1/2 day of labor to have 2 tech unpack the van and stage the furnishings and contents for resetting in each room.</i>	8.00	HR	44.75	358.00	0/NA Avg.	0%	(0.00)	358.00
10. Content Manipulation charge - per hour <i>1/2 day of labor to have 2 techs unpack the moving van at the storage facility, and 1/2 day of labor to have 2 techs repack the van for transport back to the site.</i>	8.00	HR	44.75	358.00	0/NA Avg.	0%	(0.00)	358.00
<b>STORAGE</b>								
11. Off-site storage & insur. - climate controlled - per month <i>300 SF for 2 months</i>	600.00	SF	1.46	876.00	0/NA Avg.	0%	(0.00)	876.00
12. Off-site storage vault - per month <i>For valuable and small boxed items</i>	2.00	MO	155.00	310.00	0/NA Avg.	0%	(0.00)	310.00
<b>Totals: General Items</b>			<b>3,224.88</b>				<b>0.00</b>	<b>3,224.88</b>

**Main Level**



**Bedroom1**

**Height: 8'**

365.11 SF Walls	164.00 SF Ceiling
529.11 SF Walls & Ceiling	164.00 SF Floor
18.22 SY Flooring	44.50 LF Floor Perimeter
51.33 LF Ceil. Perimeter	

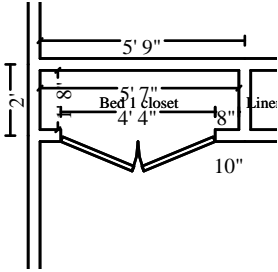
**Door** 2' 6" X 6' 8"  
**Door** 4' 4" X 6' 8"

**Opens into LIVING\_KITCH**  
**Opens into BED\_1\_CLOSET**

DESCRIPTION	QUANTITY	UNIT	RCV	AGE/LIFE	COND.	DEP %	DEPREC.	ACV
13. Content Manipulation charge - per hour <i>Labor to move the furnishings out of the room to the loading area</i>	1.50	HR	40.31	60.47	0/NA Avg.	0%	(0.00)	60.47
14. On-Site Inventory, Packing, Boxing, Moving chrg - per hour	1.50	HR	40.95	61.43	0/NA Avg.	0%	(0.00)	61.43

**CONTINUED - Bedroom1**

DESCRIPTION	QUANTITY	UNIT	RCV	AGE/LIFE	COND.	DEP %	DEPREC.	ACV
<i>Labor to pack up clothing, bric a brick, and small room items .</i>								
15. Content Manipulation charge - per hour	1.00 HR	40.31	40.31	0/NA	Avg.	0%	(0.00)	40.31
<i>Labor to move the furnishings back into the room from the unloaded moving van.</i>								
16. On-Site Inventory, Packing, Boxing, Moving chrg - per hour	1.00 HR	40.95	40.95	0/NA	Avg.	0%	(0.00)	40.95
<i>Labor to unpack clothing, bric a brick, and small room items and reset to original locations.</i>								
<b>Totals: Bedroom1</b>			<b>203.16</b>				<b>0.00</b>	<b>203.16</b>



**Bed 1 closet**

**Height: 8'**

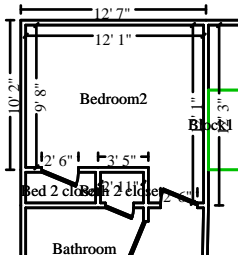
87.11 SF Walls	9.31 SF Ceiling
96.42 SF Walls & Ceiling	9.31 SF Floor
1.03 SY Flooring	10.17 LF Floor Perimeter
14.50 LF Ceil. Perimeter	

**Door**

**4' 4" X 6' 8"**

**Opens into BEDROOM1**

DESCRIPTION	QUANTITY	UNIT	RCV	AGE/LIFE	COND.	DEP %	DEPREC.	ACV
<i>Labor to move the furnishings out of the room to the loading area</i>								
17. Content Manipulation charge - per hour	0.50 HR	40.31	20.16	0/NA	Avg.	0%	(0.00)	20.16
<i>Labor to pack up clothing, bric a brick, and small room items .</i>								
18. On-Site Inventory, Packing, Boxing, Moving chrg - per hour	0.50 HR	40.95	20.48	0/NA	Avg.	0%	(0.00)	20.48
<i>Labor to move the furnishings back into the room from the unloaded moving van.</i>								
19. Content Manipulation charge - per hour	0.50 HR	40.31	20.16	0/NA	Avg.	0%	(0.00)	20.16
<i>Labor to move the furnishings back into the room from the unloaded moving van.</i>								
20. On-Site Inventory, Packing, Boxing, Moving chrg - per hour	0.50 HR	40.95	20.48	0/NA	Avg.	0%	(0.00)	20.48
<i>Labor to unpack clothing, bric a brick, and small room items and reset to original locations.</i>								
<b>Totals: Bed 1 closet</b>			<b>81.28</b>				<b>0.00</b>	<b>81.28</b>



**Bedroom2**

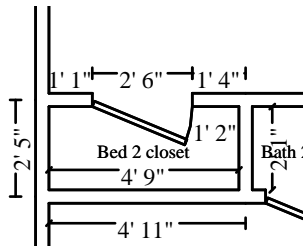
**Height: 8'**

353.33 SF Walls  
 479.20 SF Walls & Ceiling  
 13.99 SY Flooring  
 48.33 LF Ceil. Perimeter

125.87 SF Ceiling  
 125.87 SF Floor  
 43.33 LF Floor Perimeter

**Door** **2' 6" X 6' 8"** **Opens into BED\_2\_CLOSET**  
**Door** **2' 6" X 6' 8"** **Opens into LIVING\_KITCH**

DESCRIPTION	QUANTITY	UNIT	RCV	AGE/LIFE	COND.	DEP %	DEPREC.	ACV
21. Content Manipulation charge - per hour <i>Labor to move the furnishings out of the room to the loading area</i>	1.50 HR	40.31	60.47	0/NA	Avg.	0%	(0.00)	60.47
22. On-Site Inventory, Packing, Boxing, Moving chrg - per hour <i>Labor to pack up clothing, bric a brick, and small room items .</i>	1.50 HR	40.95	61.43	0/NA	Avg.	0%	(0.00)	61.43
23. Content Manipulation charge - per hour <i>Labor to move the furnishings back into the room from the unloaded moving van.</i>	1.00 HR	40.31	40.31	0/NA	Avg.	0%	(0.00)	40.31
24. On-Site Inventory, Packing, Boxing, Moving chrg - per hour <i>Labor to unpack clothing, bric a brick, and small room items and reset to original locations.</i>	1.00 HR	40.95	40.95	0/NA	Avg.	0%	(0.00)	40.95
<b>Totals: Bedroom2</b>			<b>203.16</b>				<b>0.00</b>	<b>203.16</b>



**Bed 2 closet**

**Height: 8'**

92.67 SF Walls  
 102.56 SF Walls & Ceiling  
 1.10 SY Flooring  
 13.67 LF Ceil. Perimeter

9.90 SF Ceiling  
 9.90 SF Floor  
 11.17 LF Floor Perimeter

**Door** **2' 6" X 6' 8"** **Opens into BEDROOM2**

DESCRIPTION	QUANTITY	UNIT	RCV	AGE/LIFE	COND.	DEP %	DEPREC.	ACV
25. Content Manipulation charge - per hour <i>Labor to move the furnishings out of the room to the loading area</i>	0.50 HR	40.31	20.16	0/NA	Avg.	0%	(0.00)	20.16
26. On-Site Inventory, Packing, Boxing, Moving chrg - per hour <i>Labor to pack up clothing, bric a brick, and small room items .</i>	0.50 HR	40.95	20.48	0/NA	Avg.	0%	(0.00)	20.48
27. Content Manipulation charge - per hour <i>Labor to move the furnishings back into the room from the unloaded moving van.</i>	0.50 HR	40.31	20.16	0/NA	Avg.	0%	(0.00)	20.16
28. On-Site Inventory, Packing, Boxing, Moving chrg - per hour <i>Labor to unpack clothing, bric a brick, and small room items and reset to original locations.</i>	0.50 HR	40.95	20.48	0/NA	Avg.	0%	(0.00)	20.48
<b>Totals: Bed 2 closet</b>			<b>81.28</b>				<b>0.00</b>	<b>81.28</b>



**Foyer/Entry**

**Height: 8'**

239.89 SF Walls	54.67 SF Ceiling
294.56 SF Walls & Ceiling	54.67 SF Floor
6.07 SY Flooring	28.92 LF Floor Perimeter
35.33 LF Ceil. Perimeter	

**Missing Wall - Goes to Floor**

**3' 5" X 6' 8"**

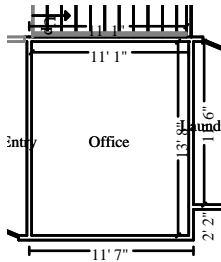
**Opens into LIVING\_KITCH**

**Door**

**3' X 6' 8"**

**Opens into Exterior**

DESCRIPTION	QUANTITY	UNIT	RCV	AGE/LIFE	COND.	DEP %	DEPREC.	ACV
29. Content Manipulation charge - per hour <i>Labor to move the furnishings out of the room to the loading area</i>	0.25 HR	40.31	10.08	0/NA	Avg.	0%	(0.00)	10.08
30. On-Site Inventory, Packing, Boxing, Moving chrg - per hour <i>Labor to pack up clothing, bric a brick, and small room items .</i>	0.25 HR	40.95	10.24	0/NA	Avg.	0%	(0.00)	10.24
31. Content Manipulation charge - per hour <i>Labor to move the furnishings back into the room from the unloaded moving van.</i>	0.25 HR	40.31	10.08	0/NA	Avg.	0%	(0.00)	10.08
32. On-Site Inventory, Packing, Boxing, Moving chrg - per hour <i>Labor to unpack clothing, bric a brick, and small room items and reset to original locations.</i>	0.25 HR	40.95	10.24	0/NA	Avg.	0%	(0.00)	10.24
<b>Totals: Foyer/Entry</b>			<b>40.64</b>				<b>0.00</b>	<b>40.64</b>

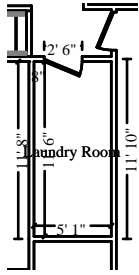


**Office**

**Height: 8'**

396.00 SF Walls	151.47 SF Ceiling
547.47 SF Walls & Ceiling	151.47 SF Floor
16.83 SY Flooring	49.50 LF Floor Perimeter
49.50 LF Ceil. Perimeter	

DESCRIPTION	QUANTITY	UNIT	RCV	AGE/LIFE	COND.	DEP %	DEPREC.	ACV
33. Content Manipulation charge - per hour <i>Labor to move the furnishings out of the room to the loading area</i>	1.50 HR	40.31	60.47	0/NA	Avg.	0%	(0.00)	60.47
34. On-Site Inventory, Packing, Boxing, Moving chrg - per hour <i>Labor to pack up clothing, bric a brick, and small room items .</i>	1.50 HR	40.95	61.43	0/NA	Avg.	0%	(0.00)	61.43
35. Content Manipulation charge - per hour <i>Labor to move the furnishings back into the room from the unloaded moving van.</i>	1.00 HR	40.31	40.31	0/NA	Avg.	0%	(0.00)	40.31
36. On-Site Inventory, Packing, Boxing, Moving chrg - per hour <i>Labor to unpack clothing, bric a brick, and small room items and reset to original locations.</i>	1.00 HR	40.95	40.95	0/NA	Avg.	0%	(0.00)	40.95
<b>Totals: Office</b>			<b>203.16</b>				<b>0.00</b>	<b>203.16</b>



**Laundry Room**

**Height: 8'**

248.67 SF Walls	58.46 SF Ceiling
307.13 SF Walls & Ceiling	58.46 SF Floor
6.50 SY Flooring	30.67 LF Floor Perimeter
33.17 LF Ceil. Perimeter	

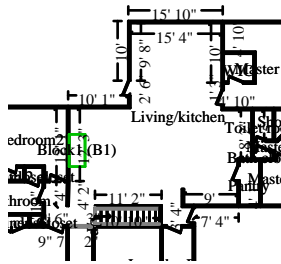
**Door**

**2' 6" X 6' 8"**

**Opens into LIVING\_KITCH**

DESCRIPTION	QUANTITY	UNIT	RCV	AGE/LIFE	COND.	DEP %	DEPREC.	ACV
37. Content Manipulation charge - per hour <i>Labor to move the furnishings out of the room to the loading area</i>	0.50	HR	40.31	20.16	0/NA Avg.	0%	(0.00)	20.16
38. On-Site Inventory, Packing, Boxing, Moving chrg - per hour <i>Labor to pack up clothing, bric a brick, and small room items .</i>	0.50	HR	40.95	20.48	0/NA Avg.	0%	(0.00)	20.48
39. Content Manipulation charge - per hour <i>Labor to move the furnishings back into the room from the unloaded moving van.</i>	0.50	HR	40.31	20.16	0/NA Avg.	0%	(0.00)	20.16
40. On-Site Inventory, Packing, Boxing, Moving chrg - per hour <i>Labor to unpack clothing, bric a brick, and small room items and reset to original locations.</i>	0.50	HR	40.95	20.48	0/NA Avg.	0%	(0.00)	20.48

<b>Totals: Laundry Room</b>			<b>81.28</b>				<b>0.00</b>	<b>81.28</b>
-----------------------------	--	--	--------------	--	--	--	-------------	--------------



**Living/kitchen**

**Height: 8'**

1093.43 SF Walls	756.12 SF Ceiling
1849.55 SF Walls & Ceiling	741.67 SF Floor
82.41 SY Flooring	132.91 LF Floor Perimeter
157.50 LF Ceil. Perimeter	

**Door**

**2' 6" X 6' 8"**

**Opens into BEDROOM2**

**Door**

**2' 6" X 6' 8"**

**Opens into BATHROOM1**

**Door**

**1' 2" X 6' 8"**

**Opens into LINEN\_CLOSET**

**Door**

**2' 6" X 6' 8"**

**Opens into BEDROOM1**

**Missing Wall - Goes to Floor**

**3' 5" X 6' 8"**

**Opens into FOYER\_ENTRY**

**Door**

**2' 6" X 6' 8"**

**Opens into LAUNDRY\_ROOM**

**Door**

**2' 6" X 6' 8"**

**Opens into GARAGE**

**Door**

**2' 6" X 6' 8"**

**Opens into PANTRY**

**Door**

**2' 6" X 6' 8"**

**Opens into MASTER\_BEDRO**

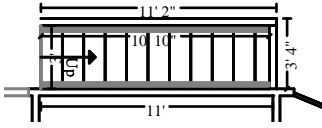
**Door**

**2' 6" X 6' 8"**

**Opens into Exterior**

**Subroom: Stairs (1)**

**Height: 14' 7"**



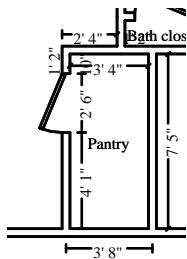
240.33 SF Walls	32.50 SF Ceiling
272.83 SF Walls & Ceiling	56.48 SF Floor
6.28 SY Flooring	25.17 LF Floor Perimeter
21.67 LF Ceil. Perimeter	

**Missing Wall**

**3' X 14' 7 3/16"**

**Opens into LIVING\_KITCH**

DESCRIPTION	QUANTITY	UNIT	RCV	AGE/LIFE	COND.	DEP %	DEPREC.	ACV
41. Content Manipulation charge - per hour <i>Labor to move the furnishings out of the room to the loading area</i>	2.75 HR	40.31	110.85	0/NA	Avg.	0%	(0.00)	110.85
42. On-Site Inventory, Packing, Boxing, Moving chrg - per hour <i>Labor to pack up clothing, bric a brick, and small room items .</i>	3.00 HR	40.95	122.85	0/NA	Avg.	0%	(0.00)	122.85
43. Content Manipulation charge - per hour <i>Labor to move the furnishings back into the room from the unloaded moving van.</i>	2.00 HR	40.31	80.62	0/NA	Avg.	0%	(0.00)	80.62
44. On-Site Inventory, Packing, Boxing, Moving chrg - per hour <i>Labor to unpack clothing, bric a brick, and small room items and reset to original locations.</i>	2.00 HR	40.95	81.90	0/NA	Avg.	0%	(0.00)	81.90
<b>Totals: Living/kitchen</b>			<b>396.22</b>				<b>0.00</b>	<b>396.22</b>



**Pantry**

**Height: 8'**

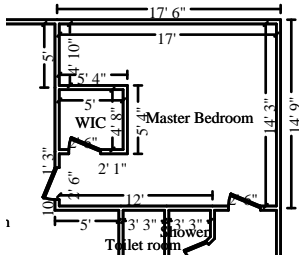
155.33 SF Walls	24.72 SF Ceiling
180.06 SF Walls & Ceiling	24.72 SF Floor
2.75 SY Flooring	19.00 LF Floor Perimeter
21.50 LF Ceil. Perimeter	

**Door**

**2' 6" X 6' 8"**

**Opens into LIVING\_KITCH**

DESCRIPTION	QUANTITY	UNIT	RCV	AGE/LIFE	COND.	DEP %	DEPREC.	ACV
45. Content Manipulation charge - per hour <i>Labor to move the furnishings out of the room to the loading area</i>	0.50 HR	40.31	20.16	0/NA	Avg.	0%	(0.00)	20.16
46. On-Site Inventory, Packing, Boxing, Moving chrg - per hour <i>Labor to pack up clothing, bric a brick, and small room items .</i>	1.00 HR	40.95	40.95	0/NA	Avg.	0%	(0.00)	40.95
47. Content Manipulation charge - per hour <i>Labor to move the furnishings back into the room from the unloaded moving van.</i>	0.50 HR	40.31	20.16	0/NA	Avg.	0%	(0.00)	20.16
48. On-Site Inventory, Packing, Boxing, Moving chrg - per hour <i>Labor to unpack clothing, bric a brick, and small room items and reset to original locations.</i>	1.00 HR	40.95	40.95	0/NA	Avg.	0%	(0.00)	40.95
<b>Totals: Pantry</b>			<b>122.22</b>				<b>0.00</b>	<b>122.22</b>



**Master Bedroom**

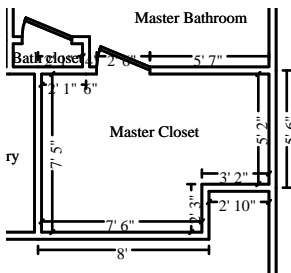
**Height: 8'**

535.33 SF Walls	213.70 SF Ceiling
749.03 SF Walls & Ceiling	213.70 SF Floor
23.74 SY Flooring	65.67 LF Floor Perimeter
73.17 LF Ceil. Perimeter	

<b>Door</b>	<b>2' 6" X 6' 8"</b>	<b>Opens into LIVING_KITCH</b>
<b>Door</b>	<b>2' 6" X 6' 8"</b>	<b>Opens into WIC</b>
<b>Door</b>	<b>2' 6" X 6' 8"</b>	<b>Opens into MASTER_BATHR</b>

DESCRIPTION	QUANTITY	UNIT	RCV	AGE/LIFE	COND.	DEP %	DEPREC.	ACV
49. Content Manipulation charge - per hour <i>Labor to move the furnishings out of the room to the loading area</i>	1.25 HR	40.31	50.39	0/NA	Avg.	0%	(0.00)	50.39
50. On-Site Inventory, Packing, Boxing, Moving chrg - per hour <i>Labor to pack up clothing, bric a brick, and small room items .</i>	0.75 HR	40.95	30.71	0/NA	Avg.	0%	(0.00)	30.71
51. Content Manipulation charge - per hour <i>Labor to move the furnishings back into the room from the unloaded moving van.</i>	1.00 HR	40.31	40.31	0/NA	Avg.	0%	(0.00)	40.31
52. On-Site Inventory, Packing, Boxing, Moving chrg - per hour <i>Labor to unpack clothing, bric a brick, and small room items and reset to original locations.</i>	0.50 HR	40.95	20.48	0/NA	Avg.	0%	(0.00)	20.48

**Totals: Master Bedroom** **141.89** **0.00** **141.89**



**Master Closet**

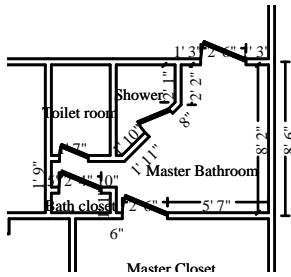
**Height: 8'**

272.67 SF Walls	72.03 SF Ceiling
344.70 SF Walls & Ceiling	72.03 SF Floor
8.00 SY Flooring	33.67 LF Floor Perimeter
36.17 LF Ceil. Perimeter	

<b>Door</b>	<b>2' 6" X 6' 8"</b>	<b>Opens into MASTER_BATHR</b>
-------------	----------------------	--------------------------------

DESCRIPTION	QUANTITY	UNIT	RCV	AGE/LIFE	COND.	DEP %	DEPREC.	ACV
53. Content Manipulation charge - per hour <i>Labor to move the furnishings out of the room to the loading area</i>	0.50 HR	40.31	20.16	0/NA	Avg.	0%	(0.00)	20.16
54. On-Site Inventory, Packing, Boxing, Moving chrg - per hour <i>Labor to pack up clothing, bric a brick, and small room items .</i>	1.00 HR	40.95	40.95	0/NA	Avg.	0%	(0.00)	40.95
55. Content Manipulation charge - per hour <i>Labor to move the furnishings back into the room from the unloaded moving van.</i>	0.50 HR	40.31	20.16	0/NA	Avg.	0%	(0.00)	20.16
56. On-Site Inventory, Packing, Boxing, Moving chrg - per hour <i>Labor to unpack clothing, bric a brick, and small room items and reset to original locations.</i>	1.00 HR	40.95	40.95	0/NA	Avg.	0%	(0.00)	40.95

**Totals: Master Closet** **122.22** **0.00** **122.22**



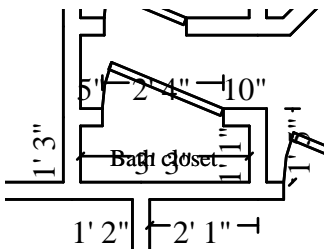
**Master Bathroom**

**Height: 8'**

236.35 SF Walls	59.58 SF Ceiling
295.93 SF Walls & Ceiling	59.58 SF Floor
6.62 SY Flooring	27.75 LF Floor Perimeter
38.50 LF Ceil. Perimeter	

<b>Door</b>	<b>2' 4" X 6' 8"</b>	<b>Opens into BATH_CLOSET</b>
<b>Door</b>	<b>2' 6" X 6' 8"</b>	<b>Opens into MASTER_CLOSE</b>
<b>Door</b>	<b>2' 6" X 6' 8"</b>	<b>Opens into MASTER_BEDRO</b>
<b>Door</b>	<b>1' 10" X 6' 8"</b>	<b>Opens into SHOWER</b>
<b>Door</b>	<b>1' 7" X 6' 8"</b>	<b>Opens into TOILET_ROOM</b>

DESCRIPTION	QUANTITY	UNIT	RCV	AGE/LIFE	COND.	DEP %	DEPREC.	ACV
57. Content Manipulation charge - per hour <i>Labor to move the furnishings out of the room to the loading area</i>	0.25 HR	40.31	10.08	0/NA	Avg.	0%	(0.00)	10.08
58. On-Site Inventory, Packing, Boxing, Moving chrg - per hour <i>Labor to pack up clothing, bric a brick, and small room items .</i>	0.50 HR	40.95	20.48	0/NA	Avg.	0%	(0.00)	20.48
59. Content Manipulation charge - per hour <i>Labor to move the furnishings back into the room from the unloaded moving van.</i>	0.25 HR	40.31	10.08	0/NA	Avg.	0%	(0.00)	10.08
60. On-Site Inventory, Packing, Boxing, Moving chrg - per hour <i>Labor to unpack clothing, bric a brick, and small room items and reset to original locations.</i>	0.50 HR	40.95	20.48	0/NA	Avg.	0%	(0.00)	20.48
<b>Totals: Master Bathroom</b>			<b>61.12</b>				<b>0.00</b>	<b>61.12</b>



**Bath closet**

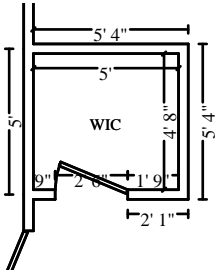
**Height: 8'**

53.83 SF Walls	3.52 SF Ceiling
57.35 SF Walls & Ceiling	3.52 SF Floor
0.39 SY Flooring	6.34 LF Floor Perimeter
8.67 LF Ceil. Perimeter	

<b>Door</b>	<b>2' 4" X 6' 8"</b>	<b>Opens into MASTER_BATHR</b>
-------------	----------------------	--------------------------------

DESCRIPTION	QUANTITY	UNIT	RCV	AGE/LIFE	COND.	DEP %	DEPREC.	ACV
61. Content Manipulation charge - per hour <i>Labor to move the furnishings out of the room to the loading area</i>	0.50 HR	40.31	20.16	0/NA	Avg.	0%	(0.00)	20.16
62. On-Site Inventory, Packing, Boxing, Moving chrg - per hour <i>Labor to pack up clothing, bric a brick, and small room items .</i>	0.50 HR	40.95	20.48	0/NA	Avg.	0%	(0.00)	20.48
63. Content Manipulation charge - per hour <i>Labor to move the furnishings back into the room from the unloaded moving van.</i>	0.50 HR	40.31	20.16	0/NA	Avg.	0%	(0.00)	20.16
64. On-Site Inventory, Packing, Boxing, Moving chrg - per hour <i>Labor to unpack clothing, bric a brick, and small room items and reset to original locations.</i>	0.50 HR	40.95	20.48	0/NA	Avg.	0%	(0.00)	20.48
<b>Totals: Bath closet</b>			<b>81.28</b>				<b>0.00</b>	<b>81.28</b>





**WIC**

**Height: 8'**

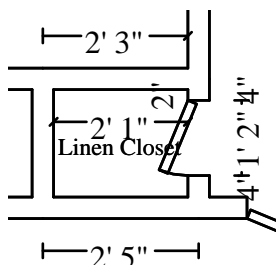
138.33 SF Walls  
 161.77 SF Walls & Ceiling  
 2.60 SY Flooring  
 19.37 LF Ceil. Perimeter

23.44 SF Ceiling  
 23.44 SF Floor  
 16.87 LF Floor Perimeter

**Door** **2' 6" X 6' 8"** **Opens into MASTER\_BEDRO**

DESCRIPTION	QUANTITY	UNIT	RCV	AGE/LIFE	COND.	DEP %	DEPREC.	ACV
65. Content Manipulation charge - per hour <i>Labor to move the furnishings out of the room to the loading area</i>	1.25 HR	40.31	50.39	0/NA	Avg.	0%	(0.00)	50.39
66. On-Site Inventory, Packing, Boxing, Moving chrg - per hour <i>Labor to pack up clothing, bric a brick, and small room items .</i>	0.50 HR	40.95	20.48	0/NA	Avg.	0%	(0.00)	20.48
67. Content Manipulation charge - per hour <i>Labor to move the furnishings back into the room from the unloaded moving van.</i>	1.00 HR	40.31	40.31	0/NA	Avg.	0%	(0.00)	40.31
68. On-Site Inventory, Packing, Boxing, Moving chrg - per hour <i>Labor to unpack clothing, bric a brick, and small room items and reset to original locations.</i>	0.50 HR	40.95	20.48	0/NA	Avg.	0%	(0.00)	20.48

**Totals: WIC** **131.66** **0.00** **131.66**



**Linen Closet**

**Height: 8'**

52.22 SF Walls  
 55.69 SF Walls & Ceiling  
 0.39 SY Flooring  
 7.50 LF Ceil. Perimeter

3.47 SF Ceiling  
 3.47 SF Floor  
 6.33 LF Floor Perimeter

**Door** **1' 2" X 6' 8"** **Opens into LIVING\_KITCH**

DESCRIPTION	QUANTITY	UNIT	RCV	AGE/LIFE	COND.	DEP %	DEPREC.	ACV
69. Content Manipulation charge - per hour <i>Labor to move the furnishings out of the room to the loading area</i>	0.50 HR	40.31	20.16	0/NA	Avg.	0%	(0.00)	20.16
70. On-Site Inventory, Packing, Boxing, Moving chrg - per hour <i>Labor to pack up clothing, bric a brick, and small room items .</i>	0.50 HR	40.95	20.48	0/NA	Avg.	0%	(0.00)	20.48
71. Content Manipulation charge - per hour <i>Labor to move the furnishings back into the room from the unloaded moving van.</i>	0.50 HR	40.31	20.16	0/NA	Avg.	0%	(0.00)	20.16
72. On-Site Inventory, Packing, Boxing, Moving chrg - per hour <i>Labor to unpack clothing, bric a brick, and small room items and reset to original locations.</i>	0.50 HR	40.95	20.48	0/NA	Avg.	0%	(0.00)	20.48

**Totals: Linen Closet** **81.28** **0.00** **81.28**

[%] - Indicates that depreciate by percent was used for this item  
 [M] - Indicates that the depreciation percentage was limited by the maximum allowable depreciation for this item

**Grand Total Areas:**

5,636.04 SF Walls	2,325.69 SF Ceiling	7,961.74 SF Walls and Ceiling
2,335.22 SF Floor	259.47 SY Flooring	682.17 LF Floor Perimeter
0.00 SF Long Wall	0.00 SF Short Wall	789.83 LF Ceil. Perimeter
2,335.22 Floor Area	2,497.28 Total Area	5,338.37 Interior Wall Area
1,850.83 Exterior Wall Area	223.33 Exterior Perimeter of Walls	
0.00 Surface Area	0.00 Number of Squares	0.00 Total Perimeter Length
0.00 Total Ridge Length	0.00 Total Hip Length	

Coverage	Item Total	%	ACV Total	%
AA-Dwelling	997.77	18.98%	997.77	18.86%
BB-Other Structures	0.00	0.00%	0.00	0.00%
CC-Unscheduled Personal Property	4,258.96	81.02%	4,292.15	81.14%
DD-Additional Living Expense	0.00	0.00%	0.00	0.00%
FF-Fire Department Service Charge	0.00	0.00%	0.00	0.00%
LD-Land	0.00	0.00%	0.00	0.00%
XX-Liability	0.00	0.00%	0.00	0.00%
YY-Guest Medical	0.00	0.00%	0.00	0.00%
A9-Dwelling - Mold	0.00	0.00%	0.00	0.00%
B9-Other Structures - Mold	0.00	0.00%	0.00	0.00%
C9-Unscheduled Personal Property - Mold	0.00	0.00%	0.00	0.00%
D9-Additional Living Expense - Mold	0.00	0.00%	0.00	0.00%
DB-Debris Removal	0.00	0.00%	0.00	0.00%
GT-Guest Travel Extended Protection	0.00	0.00%	0.00	0.00%
ML-Motorized Land Vehicle	0.00	0.00%	0.00	0.00%
RC-Replacement Cost - Contents	0.00	0.00%	0.00	0.00%
RS-Roof Surfaces Extended Coverage	0.00	0.00%	0.00	0.00%
VP-Motorized Land Vehicle Parts, Equipment or Accessories	0.00	0.00%	0.00	0.00%
W9-Water back up - Mold	0.00	0.00%	0.00	0.00%
<b>Total</b>	<b>5,256.73</b>	<b>100.00%</b>	<b>5,289.92</b>	<b>100.00%</b>

Depending upon the circumstances of your loss, our estimate may or may not include an amount for general contractor's overhead and profit. If you have questions regarding general contractor's overhead and profit and whether the services of a general contractor are appropriate for your loss, please contact your claim representative before proceeding with repairs.