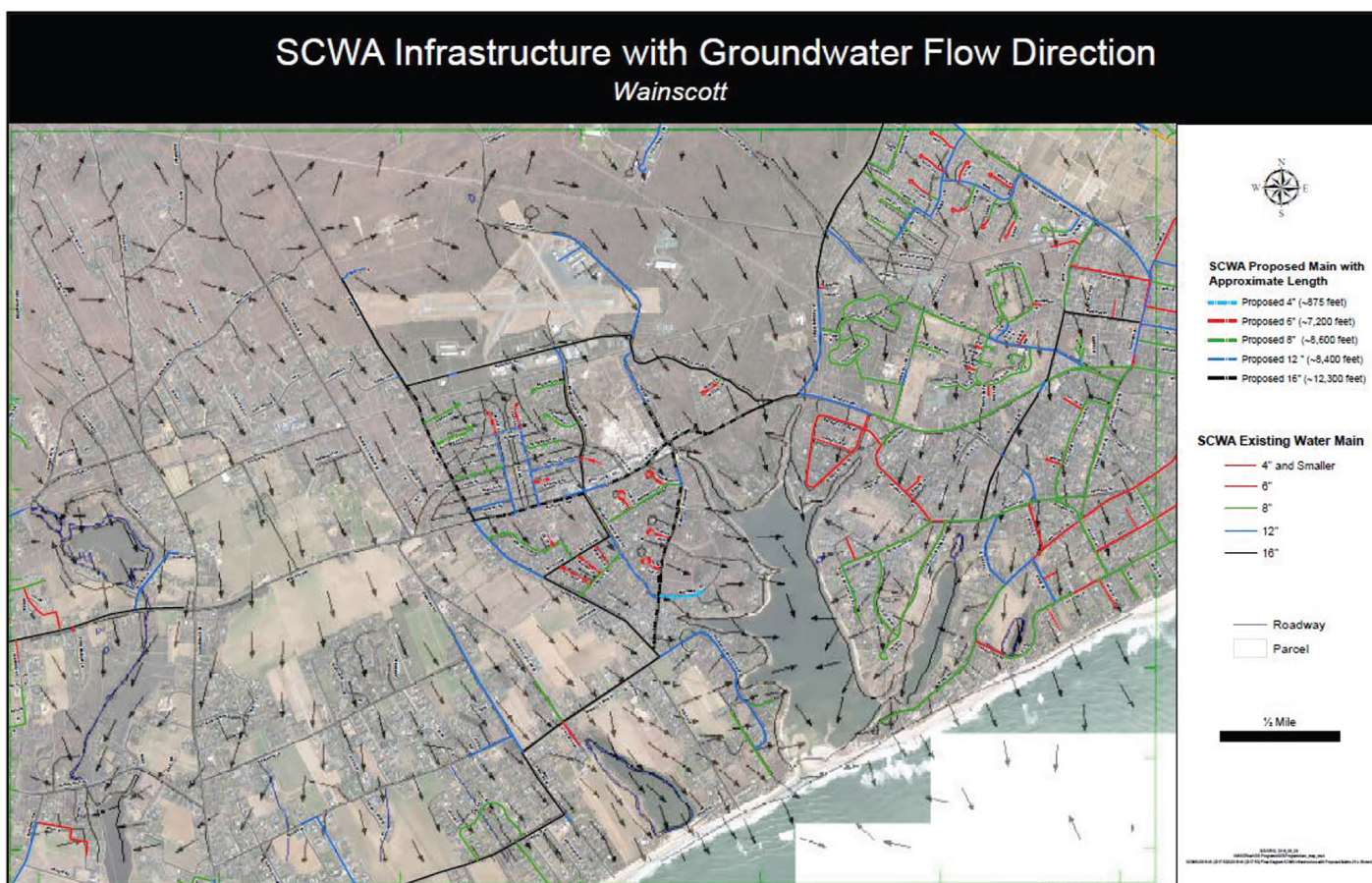


## E. Definition of the Problem

## 1. Water Quality in the Wainscott Water Supply System

The Suffolk County Department of Health Services confirmed the presence of PFOS and PFOA in private wells located south of the East Hampton Airport. Some of the collected samples levels exceed the United States Environmental Protection Agency Health Advisory Levels of 70 parts per trillion.

The Suffolk County Groundwater Model (Suffolk County Water Authority, Suffolk County Department of Health Service, and Camp, Dresser, McKee) was used to illustrate the general direction of groundwater flow in the area surrounding the proposed project location (Figure 10).



**Figure 10 Suffolk County Water Authority Infrastructure with Groundwater Flow Direction**

Source: ENGINEERING REPORT - DISTRIBUTION SYSTEM IMPROVEMENT  
by Suffolk County Water Authority (approved by Joseph Pokomy, P.E.),  
Wainscott, Town of East Hampton.

The (complete) report is available at the link (below)-  
[www.oswSouthFork.info/pfas](http://www.oswSouthFork.info/pfas)