



## TOWN OF EAST HAMPTON

159 Pantigo Road

East Hampton, New York 11937

Phone: (631) 324-8787 Fax: (631) 329-5371

**MICHAEL P. SENDLENSKI**

Town Attorney

**JOHN C. JILNICKI**

Senior Assistant Town Attorney

Assistant Town Attorneys

**ELIZABETH L. BALDWIN**

**HOPE B. DE LAUTER**

**NANCYLYNN THIELE**

October 13, 2016

Mr. Simon Kinsella  
100 Main Street  
Wainscott, NY 11975

Re: Suffolk Cement

Dear Mr. Kinsella,

Enclosed please find papers that you forwarded to Councilwoman Burke-Gonzalez regarding the Suffolk Cement property in Wainscott.

Unfortunately, due to the unknown nature of how the analyzed samples were collected, the Town is not in the position to use the information in any meaningful way. Such a determination is not to be viewed as the Town not being concerned about conditions at the property.

To that end, if you believe that there is contamination or illegal pollution at the site, those concerns are best addressed to the New York State Department of Environmental Conservation. They are the appropriate agency to investigate the concerns raised in the documents I am returning to you.

Thank you for your concern in these matters. If you have specific questions, please do not hesitate to contact me.

Very truly yours,

Michael Sendlenski

Town Attorney

Town of East Hampton

Enclosure

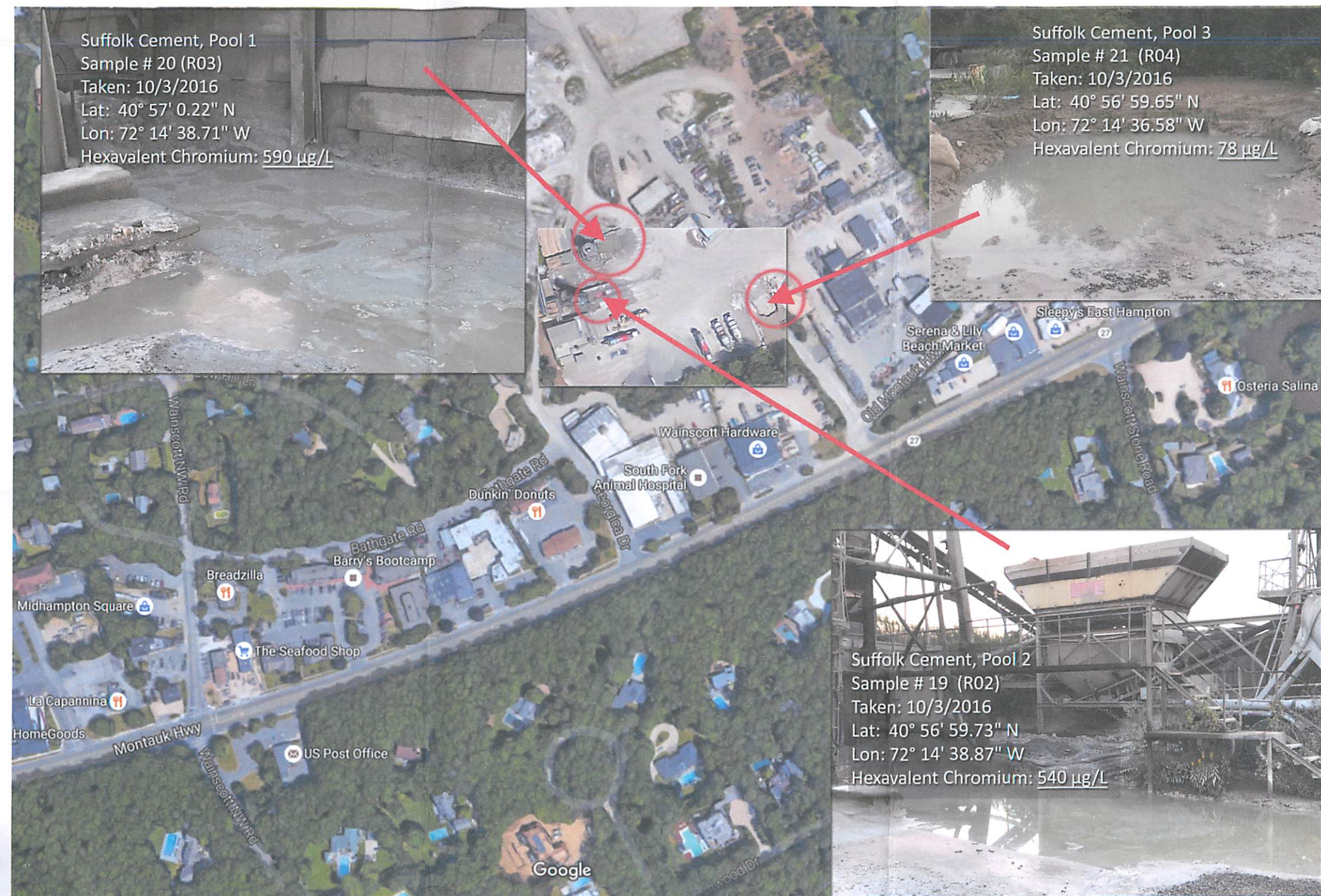
Cc: Councilwoman Burke-Gonzalez



Suffolk Cement, Pool 1  
Sample # 20 (R03)  
Taken: 10/3/2016  
Lat: 40° 57' 0.22" N  
Lon: 72° 14' 38.71" W  
Hexavalent Chromium: 590 µg/L

Suffolk Cement, Pool 3  
Sample # 21 (R04)  
Taken: 10/3/2016  
Lat: 40° 56' 59.65" N  
Lon: 72° 14' 36.58" W  
Hexavalent Chromium: 78 µg/L

Suffolk Cement, Pool 2  
Sample # 19 (R02)  
Taken: 10/3/2016  
Lat: 40° 56' 59.73" N  
Lon: 72° 14' 38.87" W  
Hexavalent Chromium: 540 µg/L





## QUALIFIERS

Project: FOWP - CR6 (23)  
Pace Project No.: 701089

---

### DEFINITIONS

DF - Dilution Factor, if reported, represents the factor applied to the reported data due to dilution of the sample aliquot.

ND - Not Detected at or above adjusted reporting limit.

J - Estimated concentration above the adjusted method detection limit and below the adjusted reporting limit.

MDL - Adjusted Method Detection Limit.

PQL - Practical Quantitation Limit.

RL - Reporting Limit.

S - Surrogate

1,2-Diphenylhydrazine decomposes to and cannot be separated from Azobenzene using Method 8270. The result for each analyte is a combined concentration.

Consistent with EPA guidelines, unrounded data are displayed and have been used to calculate % recovery and RPD values.

LCS(D) - Laboratory Control Sample (Duplicate)

MS(D) - Matrix Spike (Duplicate)

DUP - Sample Duplicate

RPD - Relative Percent Difference

NC - Not Calculable.

SG - Silica Gel - Clean-Up

U - Indicates the compound was analyzed for, but not detected.

N-Nitrosodiphenylamine decomposes and cannot be separated from Diphenylamine using Method 8270. The result reported for each analyte is a combined concentration.

Pace Analytical is TNI accredited. Contact your Pace PM for the current list of accredited analytes.

TNI - The NELAC Institute.

## REPORT OF LABORATORY ANALYSIS

This report shall not be reproduced, except in full,  
without the written consent of Pace Analytical Services, LLC.

## QUALITY CONTROL DATA

Project: FOWP - CR6 (23)

Pace Project No.: 701089

QC Batch:	29	Analysis Method:	SM22 3500-Cr B
QC Batch Method:	SM22 3500-Cr B	Analysis Description:	Chromium, Hexavalent by 3500
Associated Lab Samples: 701089006, 701089010, 701089014, 701089015, 701089016, 701089017, 701089019, 701089020, 701089021			

METHOD BLANK:	517	Matrix:	Water
Associated Lab Samples: 701089006, 701089010, 701089014, 701089015, 701089016, 701089017, 701089019, 701089020, 701089021			

Parameter	Units	Blank Result	Reporting Limit	Analyzed	Qualifiers
Chromium, Hexavalent	mg/L	<0.020	0.020	10/04/16 15:05	

LABORATORY CONTROL SAMPLE & LCSD: 518		519								
Parameter	Units	Spike Conc.	LCS Result	LCSD Result	LCS % Rec	LCSD % Rec	% Rec Limits	RPD	Max RPD	Qualifiers
Chromium, Hexavalent	mg/L	.2	0.21	0.20	104	99	85-115	5	20	

Results presented on this page are in the units indicated by the "Units" column except where an alternate unit is presented to the right of the result.

## REPORT OF LABORATORY ANALYSIS

This report shall not be reproduced, except in full,  
without the written consent of Pace Analytical Services, LLC.

## ANALYTICAL RESULTS

Project: FOWP - CR6 (23)

Pace Project No.: 701089

<b>Sample: #19 (R02)</b>		<b>Lab ID: 701089019</b>	Collected: 10/03/16 18:19		Received: 10/04/16 11:15		Matrix: Water	
Parameters	Results	Units	Report Limit	DF	Prepared	Analyzed	CAS No.	Qual
<b>Chromium, Hexavalent</b>		Analytical Method: SM22 3500-Cr B						
Chromium, Hexavalent	0.54	mg/L	0.040	2		10/04/16 15:05	18540-29-9	

## REPORT OF LABORATORY ANALYSIS

This report shall not be reproduced, except in full,  
without the written consent of Pace Analytical Services, LLC.

## ANALYTICAL RESULTS

Project: FOWP - CR6 (23)

Pace Project No.: 701089

Sample: #20 (R03)		Lab ID: 701089020	Collected: 10/03/16 18:21	Received: 10/04/16 11:15	Matrix: Water			
Parameters	Results	Units	Report Limit	DF	Prepared	Analyzed	CAS No.	Qual
Chromium, Hexavalent	Analytical Method: SM22 3500-Cr B							
Chromium, Hexavalent	0.59	mg/L	0.040	2		10/04/16 15:05	18540-29-9	

## REPORT OF LABORATORY ANALYSIS

This report shall not be reproduced, except in full,  
without the written consent of Pace Analytical Services, LLC.

## ANALYTICAL RESULTS

Project: FOWP - CR6 (23)

Pace Project No.: 701089

Sample: #21 (R04)		Lab ID: 701089021	Collected: 10/03/16 18:22		Received: 10/04/16 11:15		Matrix: Water	
Parameters	Results	Units	Report Limit	DF	Prepared	Analyzed	CAS No.	Qual
Chromium, Hexavalent		Analytical Method: SM22 3500-Cr B						
Chromium, Hexavalent	0.078	mg/L	0.020	1		10/04/16 15:05	18540-29-9	

## REPORT OF LABORATORY ANALYSIS

This report shall not be reproduced, except in full,  
without the written consent of Pace Analytical Services, LLC.