

A

Total Frac Tank Dewatering Capacity of 75,000 gallons,
specifically designed to remove PFAS contaminants from groundwater

Double Wall
Frac Tank
(17,930 gallons)

Open Top
Weir Tank
(17,826 gallons)

Double Wall
Frac Tank
(17,930 gallons)

Granular Activated
Carbon Filter:
designed to remove
PFAS contamination

Modern/ESP Hybrid
Frac Tank
(21,357 gallon)



B



⚠ WARNING

Wet activated carbon removes oxygen from air. Oxygen depletion may reach hazardous levels in closed or partially closed vessels.

⚠ ADVERTENCIA

El carbón activado humedo quita el oxigeno del aire. La reduccion de oxigeno puede alcanzar niveles peligrosos en embarcaciones cerradas o parcialmente cerradas.

0CLW52



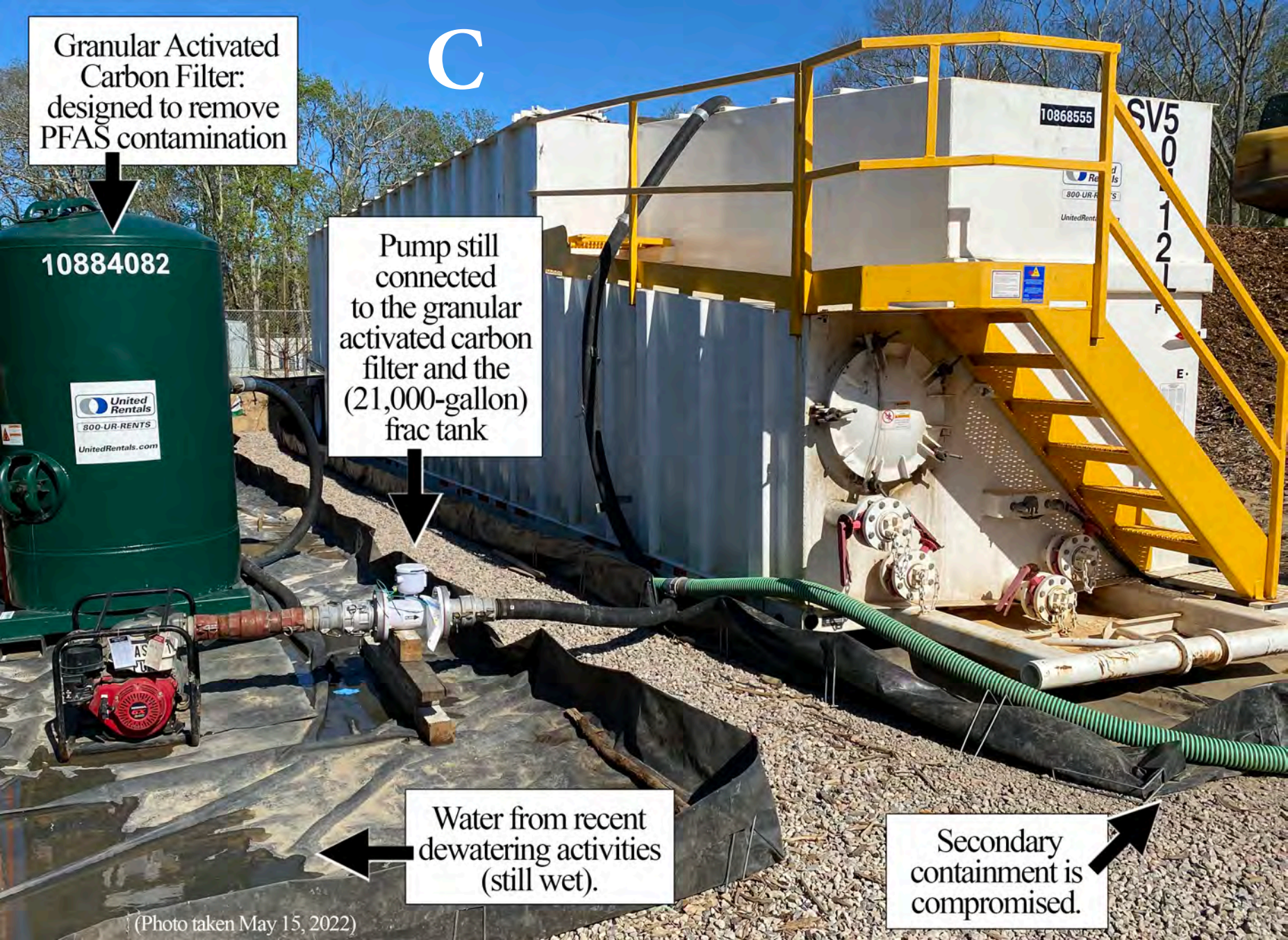
Granular Activated Carbon Filter: designed to remove PFAS contamination

C

Pump still connected to the granular activated carbon filter and the (21,000-gallon) frac tank

Water from recent dewatering activities (still wet).

Secondary containment is compromised.

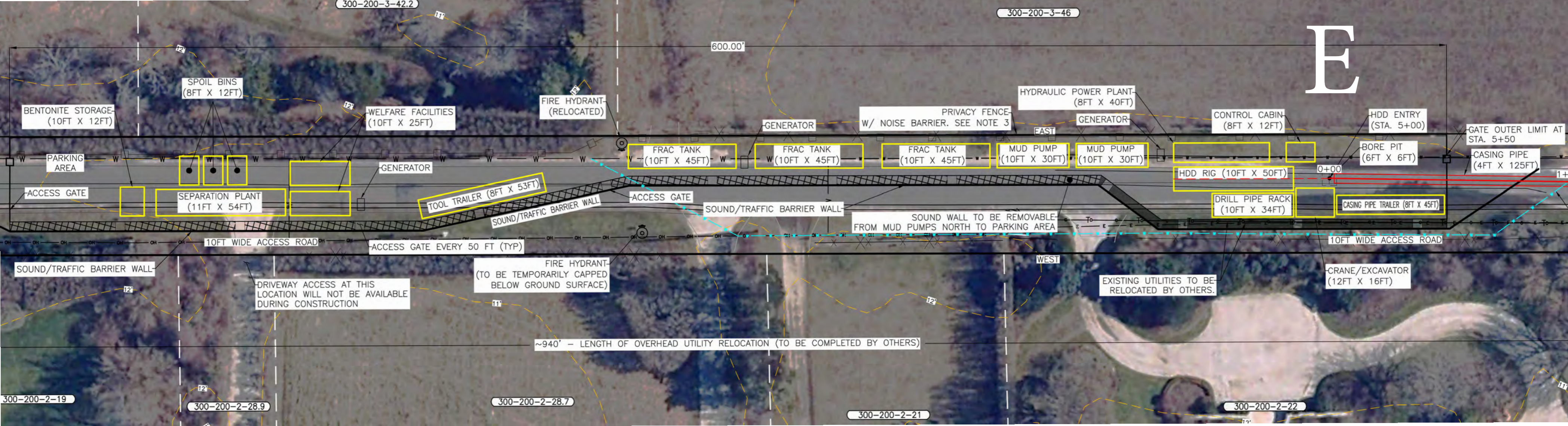


D

Secondary containment is compromised. South Fork Wind uses loose plastic sheets (unsealed) to cover holes and patches. Containment sides have collapsed, releasing contaminated water into the sole-source aquifer.



(Photo taken on May 19, 2022)



E

300-200-3-46

600.00'

300-200-3-42.2

BENTONITE STORAGE-
(10FT X 12FT)

SPOIL BINS
(8FT X 12FT)

WELFARE FACILITIES
(10FT X 25FT)

FIRE HYDRANT-
(RELOCATED)

GENERATOR

W/ NOISE BARRIER. SEE NOTE 3

PRIVACY FENCE

HYDRAULIC POWER PLANT-
(8FT X 40FT)

GENERATOR

CONTROL CABIN
(8FT X 12FT)

HDD ENTRY
(STA. 5+00)

GATE OUTER LIMIT AT
STA. 5+50

PARKING
AREA

ACCESS GATE

SEPARATION PLANT
(11FT X 54FT)

GENERATOR

TOOL TRAILER (8FT X 53FT)

FRAC TANK
(10FT X 45FT)

FRAC TANK
(10FT X 45FT)

FRAC TANK
(10FT X 45FT)

MUD PUMP
(10FT X 30FT)

MUD PUMP
(10FT X 30FT)

HDD RIG (10FT X 50FT)

BORE PIT
(6FT X 6FT)

CASING PIPE
(4FT X 125FT)

10FT WIDE ACCESS ROAD

ACCESS GATE EVERY 50 FT (TYP)

ACCESS GATE

SOUND/TRAFFIC BARRIER WALL

SOUND WALL TO BE REMOVABLE-
FROM MUD PUMPS NORTH TO PARKING AREA

DRILL PIPE RACK
(10FT X 34FT)

CASING PIPE TRAILER (8FT X 45FT)

10FT WIDE ACCESS ROAD

SOUND/TRAFFIC BARRIER WALL

DRIVEWAY ACCESS AT THIS
LOCATION WILL NOT BE AVAILABLE
DURING CONSTRUCTION

FIRE HYDRANT-
(TO BE TEMPORARILY CAPPED
BELOW GROUND SURFACE)

WEST

EXISTING UTILITIES TO BE
RELOCATED BY OTHERS.

CRANE/EXCAVATOR
(12FT X 16FT)

~940' - LENGTH OF OVERHEAD UTILITY RELOCATION (TO BE COMPLETED BY OTHERS)

300-200-2-19

300-200-2-28.9

300-200-2-28.7

300-200-2-21

300-200-2-22

F

South Fork Wind
Transition Vault
(with groundwater)
Beach Lane, Wainscott
on April 18, 2022

