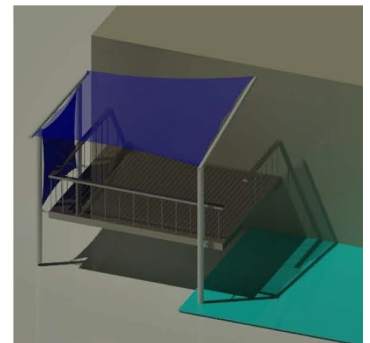
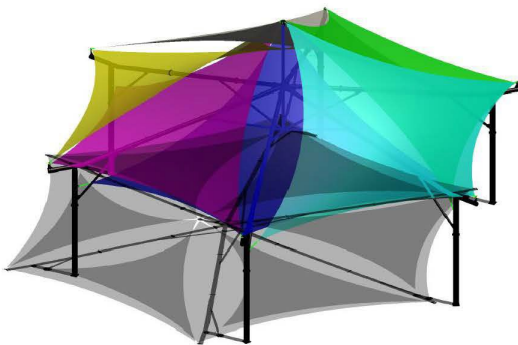




- * Distinctive high quality structures for playgrounds, day care, aquatic facilities, decks & patios.
- * Up to 22 fabric colors, NFPA 701 & ASTM E84 compliant. All RAL powder coat colors available.
- * Easy installation with fabric tensioning system
- * No hassle 12 year fabric & steel warranty.
- * Galvanized and powder coated steel. 316 stainless steel & HDG hardware
- * 20 to 25 degree ambient temperature reduction with Duffer Hollow Designs shade fabric
- * Shields up to 96% UVA & UVB. Reduces dangerous heat gain on shaded equipment.
- * Code compliant designs for U.S. and Canadian locations.
- * Rachel knitted HDPE shade fabric tensioned off the steel structure.
- * No steel cables in catenary.
- * Sizes: Custom sizing available
- * Manufactured by Duffer Hollow Designs in Missouri with certified welders & commercial sewists.
- * Optional lighting & custom designs available
- * Cost effective shipment nationwide

Visit our website: www.dufferhollowdesigns.com



Duffer Hollow Designs ~ 7606 North 14th Street ~ Rich Hill, MO 64779
Phone: 660.464.4660 – www.dufferhollowdesigns.com

Polytex[®]+

Roll Width: 150 inches • Weight: 7oz/yard² • Put Up: 33 yards, center folded

Polytex[®]+ is made of High-Density Polyethylene (HDPE) fire retardant shade fabric, manufactured with monofilament and tape yarns. New and improved pigmentation allows for extended color life. Polytex+ is heat-set reducing curling and shrinkage offering improved dimensional stability. Designed for architectural shade sails and outdoor shade structures like canopies and patio shade sails where sun protection is needed. It offers a high-strength-to-weight ratio, mildew resistance, and 12-year warranty against UV degradation. This lightweight shade cloth is lead and phthalate free.

FR Standards Met: NFPA 701 TM 2

Colors are representative only. Small variations in shade should be anticipated and are with commercial tolerances.



TRIVANTAGE

ORDER. DONE. GOOD CALL.

Comtex[®]+

Roll Width: 150 inches • Weight: 10oz/yard² • Put Up: 33 yards, center folded

Comtex[®]+ is a knitted High-Density Polyethylene (HDPE) fire retardant shade fabric. Comtex+ is heat-set allowing for less curling and shrinkage, offering improved dimensional stability. Designed for medium-to-large architectural shade sails, tension membrane structures and commercial shade structures. This versatile fabric performs excellency for both commercial and residential applications. New and improved pigmentation allows for extended color life. It delivers lasting protection from the sun's rays with a 12-year warranty against UV degradation. This shade cloth is lead and phthalate free.

FR Standards Met: NFPA 701 TM 2

Colors are representative only. Small variations in shade should be anticipated and are with commercial tolerances.



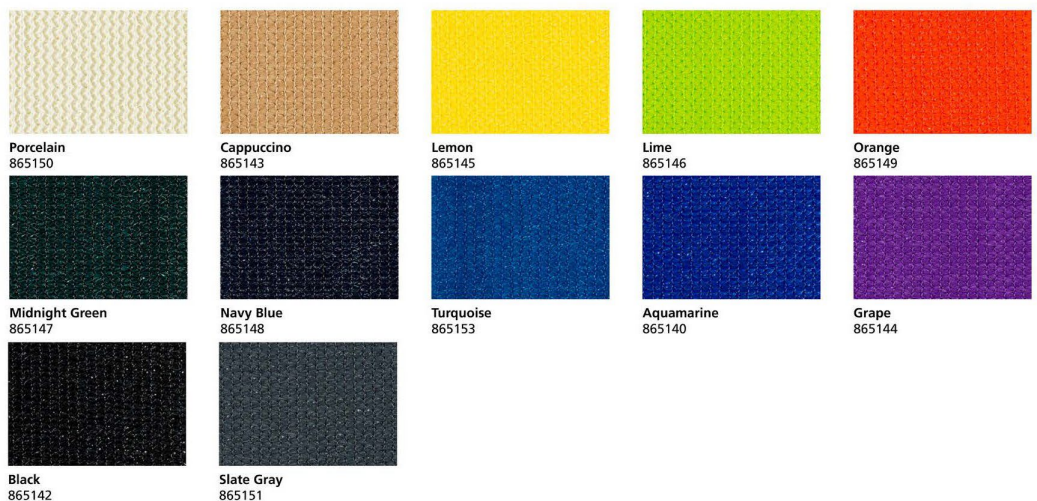
Architec 400[®]

Roll Width: 150 inches • Weight: 12 oz/yard² • Put Up: 55 yards, not folded

Architec 400[®] is a high-strength, UV-stabilized knitted shade cloth. It is designed for large, commercial tension structures and shade sails. This High-Density Polyethylene (HDPE) shade fabric incorporates the latest in ultraviolet stabilizers that provide color consistency and colorfastness. Architec 400 has a 15-year warranty against UV degradation and is lead and phthalate free.

FR Standards Met: ASTM E-84 Class 1 or A rating

Colors are representative only. Small variations in shade should be anticipated and are with commercial tolerances.



TRIVANTAGE

ORDER. DONE. GOOD CALL.



RAL Powder Coating Color Chart

RAL 1000	RAL 1001	RAL 1002	RAL 1003	RAL 1004	RAL 1005	RAL 1006	RAL 1007	RAL 1011	RAL 1012
RAL 1013	RAL 1014	RAL 1015	RAL 1016	RAL 1017	RAL 1018	RAL 1019	RAL 1020	RAL 1021	RAL 1023
RAL 1024	RAL 1027	RAL 1028	RAL 1032	RAL 1033	RAL 1034	RAL 1037	RAL 2000	RAL 2001	RAL 2002
RAL 2003	RAL 2004	RAL 2008	RAL 2009	RAL 2010	RAL 2011	RAL 2012	RAL 3000	RAL 3001	RAL 3002
RAL 3003	RAL 3004	RAL 3005	RAL 3007	RAL 3009	RAL 3011	RAL 3012	RAL 3013	RAL 3014	RAL 3015
RAL 3016	RAL 3017	RAL 3018	RAL 3020	RAL 3022	RAL 3027	RAL 3031	RAL 4001	RAL 4002	RAL 4003
RAL 4004	RAL 4005	RAL 4006	RAL 4007	RAL 4008	RAL 4009	RAL 4010	RAL 5000	RAL 5001	RAL 5002
RAL 5003	RAL 5004	RAL 5005	RAL 5007	RAL 5008	RAL 5009	RAL 5010	RAL 5011	RAL 5012	RAL 5013
RAL 5014	RAL 5015	RAL 5017	RAL 5018	RAL 5019	RAL 5020	RAL 5021	RAL 5022	RAL 5023	RAL 5024
RAL 6000	RAL 6001	RAL 6002	RAL 6003	RAL 6004	RAL 6005	RAL 6006	RAL 6007	RAL 6008	RAL 6009
RAL 6010	RAL 6011	RAL 6012	RAL 6013	RAL 6014	RAL 6015	RAL 6016	RAL 6017	RAL 6018	RAL 6019
RAL 6020	RAL 6021	RAL 6022	RAL 6024	RAL 6025	RAL 6026	RAL 6027	RAL 6028	RAL 6029	RAL 6032
RAL 6033	RAL 6034	RAL 7000	RAL 7001	RAL 7002	RAL 7003	RAL 7004	RAL 7005	RAL 7006	RAL 7008
RAL 7009	RAL 7010	RAL 7011	RAL 7012	RAL 7013	RAL 7015	RAL 7016	RAL 7021	RAL 7022	RAL 7023
RAL 7024	RAL 7026	RAL 7030	RAL 7031	RAL 7032	RAL 7033	RAL 7034	RAL 7035	RAL 7036	RAL 7037
RAL 7038	RAL 7039	RAL 7040	RAL 7042	RAL 7043	RAL 7044	RAL 7045	RAL 7046	RAL 7047	RAL 8000
RAL 8001	RAL 8002	RAL 8003	RAL 8004	RAL 8007	RAL 8008	RAL 8011	RAL 8012	RAL 8014	RAL 8015
RAL 8016	RAL 8017	RAL 8019	RAL 8022	RAL 8023	RAL 8024	RAL 8025	RAL 8028	RAL 9001	RAL 9002
RAL 9003	RAL 9004	RAL 9005	RAL 9010	RAL 9011	RAL 9016	RAL 9017	RAL 9018		

To ensure timely delivery, please be aware that not all RAL colors featured in this brochure are standard or consistently stocked by the manufacturer. DHD prioritizes clear communication and will confirm a suitable standard color match with you prior to proceeding



Warranty

DHD, LLC provides a limited warranty on all the products it supplies. This warranty is the buyer's warranty, and no other warranty is implied. This warranty is in effect from the date of payment in full and is void if the structure is not assembled and installed and maintained in accordance with DHD installation and warranty instructions.

- The purchaser must notify DHD in writing of any warranty claim.
- DHD may repair or replace any item covered by this warranty, at the sole discretion of DHD.
- This warranty is void if any modification is made to the steel structure components or fabric without written authorization from DHD. Unauthorized modification may result in structural steel or fabric damage.
- This warranty is void if damage to the steel components or fabric is the result of vandalism, misuse, acts of nature, including but not limited to snow, ice, or wind in excess of the applicable building code or the result of the owner's failure to perform regular maintenance.
- DHD denies any implied warranties of fitness for a particular purpose and DHD will not in any event be liable for indirect, consequential, or liquidated damages

Steel Fabrication

All upright steel components fabricated by DHD are warranted to perform structurally for a period of 20 years. Painted surfaces are warranted for 1 year. If you accidentally damage the paint finish, please contact us for touch up paint.

DHD Knitted Fabric

DHD fabrics carry a limited 12-year performance warranty, effective from the date of payment in full.

- The fabric is warranted against structural UV degradation, deterioration from normal outdoor heat or cold. Significant color fade is not covered
- This warranty is void if fabric is exposed to chemicals or vandalism, misuse, acts of nature, including but not limited to snow, ice or wind in excess of the applicable building code or the result of the owner's failure to perform regular inspections and maintenance.
 - The knitted shade fabric should be inspected at least a quarterly basis for tightness and to check for any signs of wear or tear damage.
 - If the shade fabric is exposed to severe wind, snow, or ice loads there may be a need for the fabric to be re-tensioned after the event ceases, so that the fabric maintains the required tension to perform as designed and avoid any possibility of mechanical damage taking place as a result of excessive movement of loose fabric. Re-tensioning is easily accomplished by using a socket wrench at the central hub, end of arm tensioner or by adjusting the turnbuckle(s).
 - If your shade fabric is damaged by any mechanical means, such as bird strike, wind blown debris, projectile impact such as stones thrown from mowers, vandalism, or chemical exposure, it should be repaired as soon as possible by removing the fabric, ship to DHD and we will repair and ship back.
- If the fabric we provide fails to perform under normal use that is within the intended design, DHD will provide repair or replace fabric as follows:

1 to 6 years after payment in full: DHD will pay 100% of replacement fabric cost

7 to 12 years after payment in full: DHD will pay 50% of replacement fabric cost

DHD structures are designed and fabricated in accordance with applicable codes and standards. Wind loads are derived using ASCE 7-10 with coefficients derived from testing the actual material. Steel is designed per current AISC specifications.

Our structures are appropriately engineered to carry all required loads and manufactured in accordance with accepted standards and practice.

During a high wind occurrence, there are typically significant, extremely high wind bursts and wind-blown debris. It is not possible to anticipate nor practical to design for these conditions.

We warrant that the design is in accordance with the applicable code and that we manufacture the structures in accordance with accepted standards and practice. We are not able to guarantee that the structure will not be damaged during a high wind event, and we strongly recommend that the simple fabric removal process be followed when high winds are anticipated.

This warranty goes into effect when we are paid in full AND when we receive photos of the completed installation.

If you have warranty questions, please address them to: office@dufferhollowdesigns.com