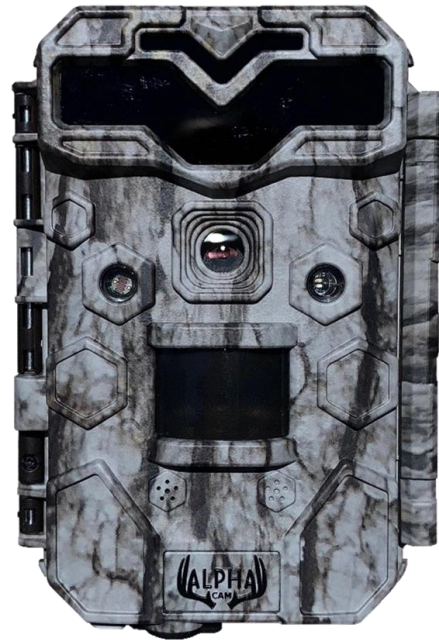
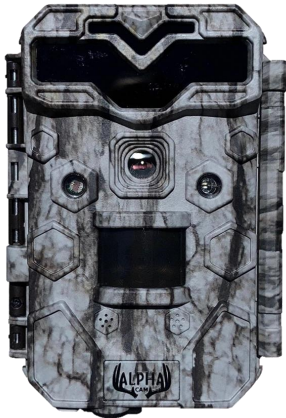


Alpha Cam Premium Instruction Manual

Model Number 53002



Lit Number 19-080801



Alpha Cam Premium Instruction Manual

Congratulations on the purchase of your Alpha Cam! The Alpha Cam Premium is one of the best scouting cameras available and is designed for long duration performance in the harshest outdoor environment. It is equipped with built-in infrared LEDs for incredible night vision images and can be triggered by movement 24 hours a day. The Alpha Cam Premium takes high quality full color daytime images or video with audio or covert infrared black and white nighttime images or video with audio. Please refer to the notes below and instructions in this manual to ensure that you are using this product as designed. ***FOR BEST RESULTS USE HIGH QUALITY AA ALKALINE OR AA LITHIUM BATTERIES ONLY (NO RECHARGEABLE BATTERIES) AND CLASS 10 OR HIGHER SD CARDS***
To reach us directly please email us at: support@alphacamhunt.com
For the latest updates, please visit our website: www.alphacamhunt.com
Here you will find the latest FAQ's and Tips as well as Firmware Updates when needed.



Table of Contents



Quick Start	3
Useful Tips	4
Camera Views	5
Camera Overview	6
Image Review On The LCD	7
Hot Keys	7
Standard Accessories	7
Power Supply	8
SD Card/USB Port	8
Operational Modes	9
Detailed Menu Settings	10
Mounting	16
Positioning and Sensing	16
Specifications	17
Warranty Card	18
Certifications	19



Quick Start



1. Open the latch located on the right side of the camera
2. Install 8 lithium AA or alkaline AA batteries (user supplied)
3. Insert SD card—Up to 512GB Capable (user supplied)
4. Switch to the SETUP Mode and Press MENU key
5. Press OK button to select Set Clock and use the up/down arrow buttons to select the time in hours then use right/left arrow buttons to complete all settings including the date. Press OK when complete.
6. Press up/down arrow buttons to select Camera, Video or Dual Mode (Dual takes an image shortly followed by a video clip)
7. Press Menu button to exit Menu mode.
8. Switch to the ON Mode to allow your camera to start recording images or videos. (LCD Screen will power off while in the ON position)
9. Close the camera front door and latch the camera after sliding the switch to ON.
10. Position your camera in a good position to take a few test images or videos



Useful Tips

- Setup Mode is the mode for adjusting the camera settings as you wish. You can either power the camera off or on from this switch position.
- We always recommend when returning to your camera that you open the door and power the unit from ON to OFF directly, then select Setup from the OFF position. Moving from ON directly to SETUP is never recommended.
- Always switch the camera OFF to replace the batteries or SD card.
- Front Camera LED Indicator
- The indicator LED flashes red when it is turned to Setup to indicate when motion is detected during setup and flashes for several seconds when the switch is moved to ON when ready for operation.
- In the rare need of updating the software in the camera, the LED light flashes green during the updating process.
- Install 8AA Lithium or 8AA Alkaline batteries for best performance—rechargeable batteries are not recommended.
- When inserting a new SD card, make sure that the SD card lock lever is not in the lock state. Always switch the camera off before removing or inserting an SD card.
- If an external power supply is required, make sure that 12V voltage with max 2A power adapter is used and the polarity of the plug is correct.
- If you plan to store the camera for an extended period of time, please remove the batteries to avoid any possible damage to the camera.
- Camera is water resistant and weather proof, but cannot be directly immersed in water.
- The Fresnel lens the covers the PIR motion sensor is fragile and shouldn't be under any pressure.
- Keep the lens and battery compartment clean.

Camera Views



Camera Overview

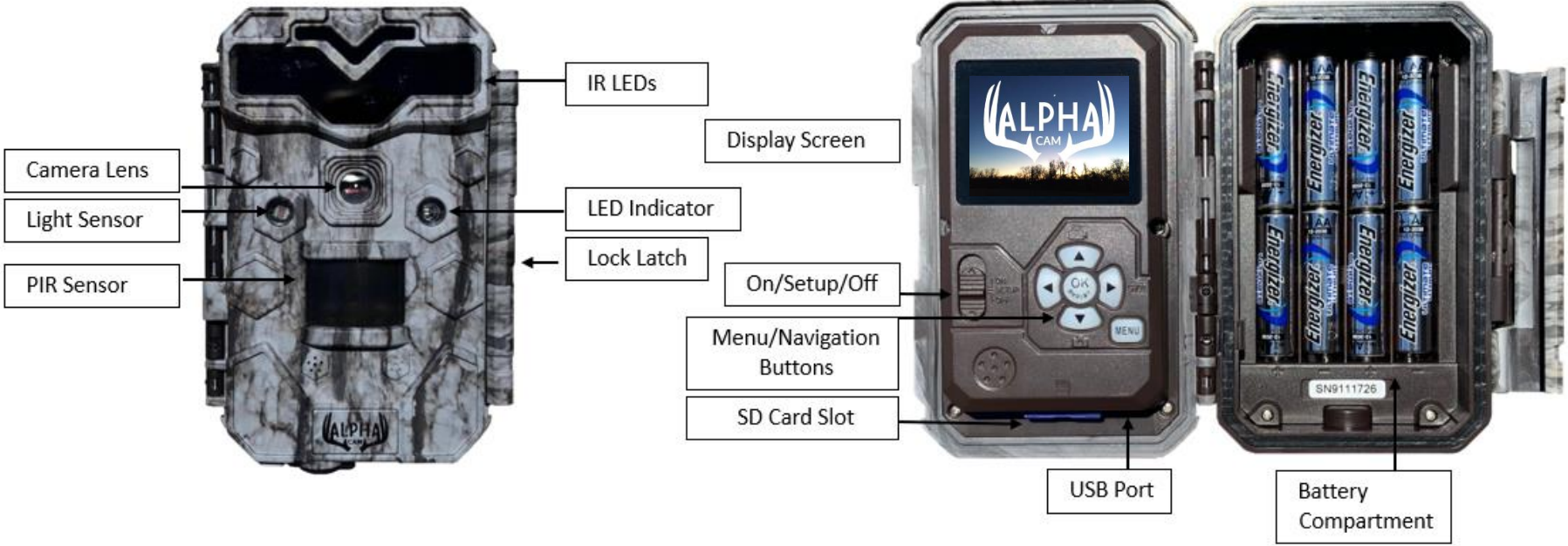
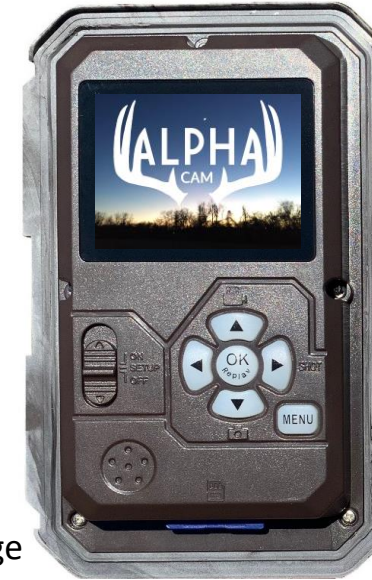


Image Review On The LCD

1. From the SETUP menu, press the OK Replay button
2. Press the UP/DOWN arrows to browse through the latest images/video
3. For Images, you can zoom into those images for more detail by pressing the LEFT arrow, then using the UP/DOWN buttons to choose zoom level.
4. Once zoomed, you can then select zoom level by pressing OK. Then using the four directional arrow keys, you can pan the image to explore.
5. For Video, press the right arrow to play the selected video clip.
6. While reviewing images or video, you can press the MENU button to delete current or all images or video. To exit press MENU.
7. Press OK to exit the image or video review mode at any time.



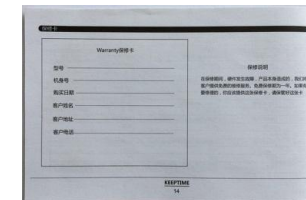
“Hot Keys”

- From the SETUP menu, pressing the RIGHT arrow button to take a sample image
- From the SETUP menu, pressing the UP arrow button will change to video mode
- From the SETUP menu, pressing the DOWN arrow button will change to image mode



Adjustable Web Belt w/Buckle

Standard Accessories



Instruction Manual





Power Supply

After opening the latch on the right side of the camera, you will see that it has 8 battery slots. For maximum battery life, we recommend using 8 lithium AA or alkaline batteries.

Please be sure to insert each battery with correct polarity (negative or “flat” end against the long spring of each battery slot).

SD Card/USB Port

Insert the SD card (OFF mode) before beginning to operate the camera. SD card is supported up to maximum 512GB capacity. *(USB Port can be used to plug camera into a computer as a “mass storage” device to access images, but SD Card is the most convenient method for accessing images by removing the card from the camera and reading with your computer.)*



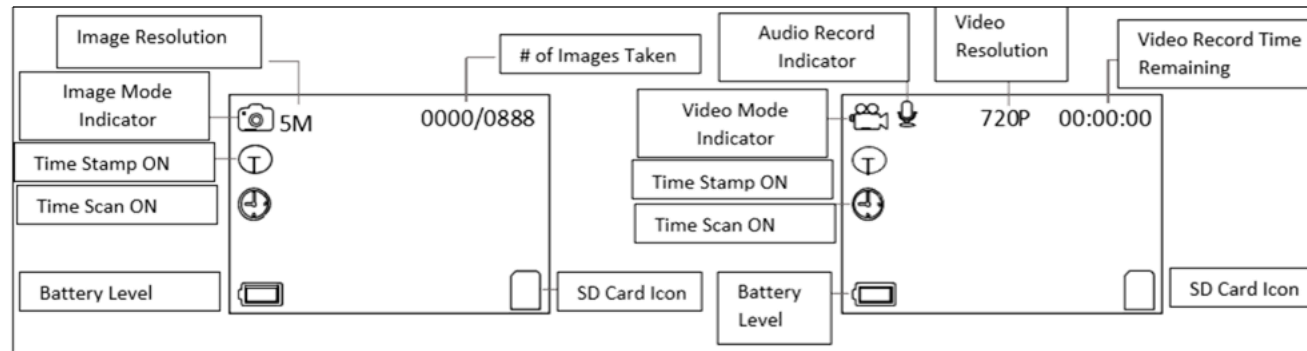
Operational Modes

「OFF」 Mode When cam in OFF mode, you can do the following:

- Replace the SD card or batteries
- Connect cam with other device by USB port

「SETUP」 Mode When cam in SETUP mode, you can do the following:

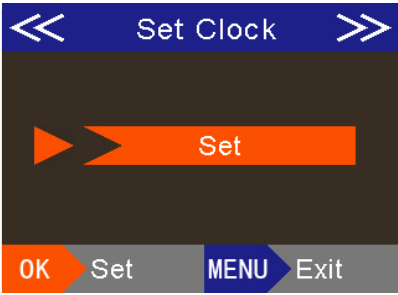
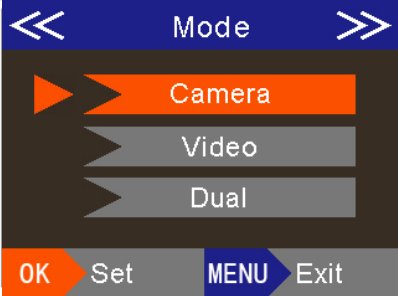
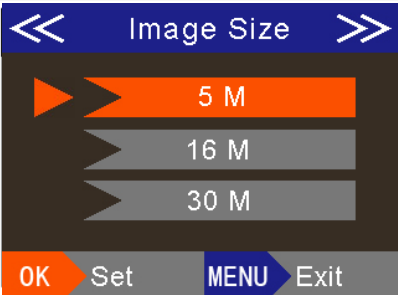
- Check and change the settings of the camera or review images with the help of built-in LCD. Moving the power switch to the SETUP position will turn on the LCD display and you will see an information screen.



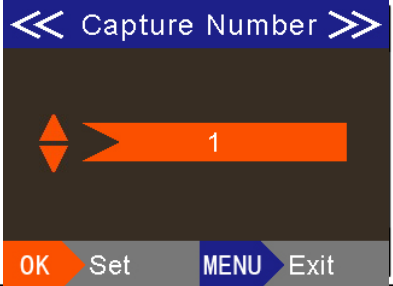
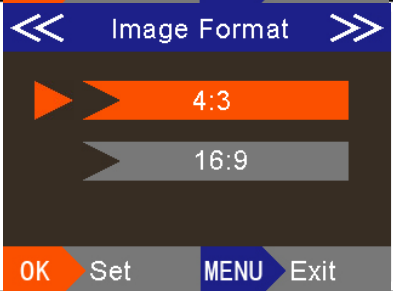
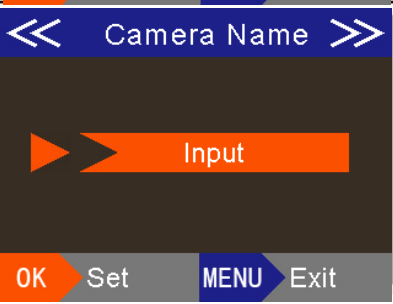
「ON」 Mode When cam in ON mode, you can do the following:

- Once in ON mode no manual controls are possible (the control keys have no effect). The cam will take images or video automatically (according to its current menu settings) when it is triggered by the PIR sensor

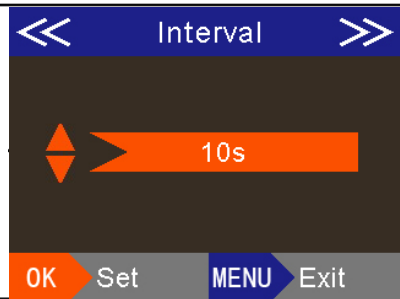
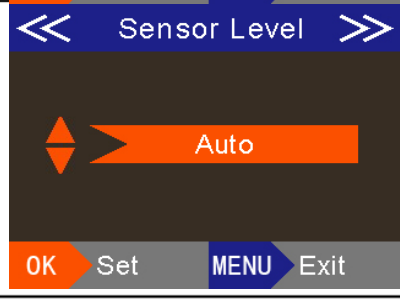
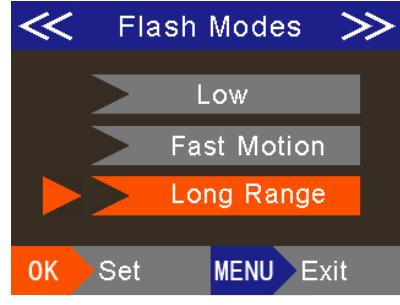
Detailed Menu Settings

Clock		<p>Press OK and use UP/DOWN keys (to change the setting and LEFT/RIGHT keys (to move to the next field to set the hour (24hr format only, "00" = Midnight, "12" = Noon) and minute, and then (on the lower row), the month, day, and year. Once all settings are made, press OK to save.</p>
Mode		<p>Selects whether still photos or video clips are captured when the camera is triggered. "Dual" = Camera + Video</p>
Image Size		<p>Selects resolution for still images from 5MP to 30MP. Higher resolution produces better quality images, but creates larger files that take up more of the SD card capacity.</p>

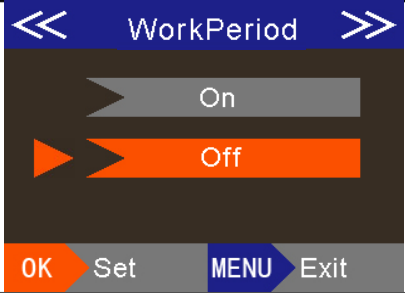
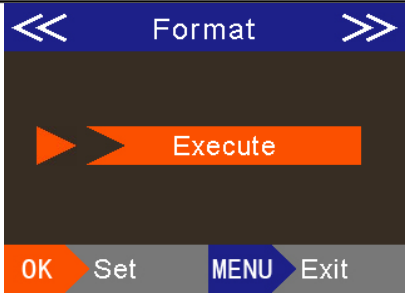
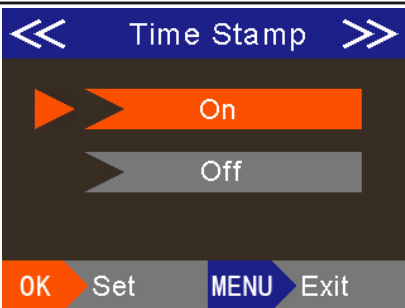
Detailed Menu Settings

Capture Number		<p>Selects how many images are taken in sequence per trigger.</p>
Image Format		<p>Selects Image Format Ratio. 4:3 is a standard format while 16:9 is considered widescreen format.</p>
Camera Name		<p>Select Camera Name Input to place a unique custom name on the image stamp of your camera's images.</p>

Detailed Menu Settings

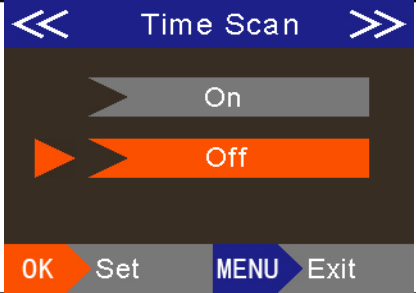
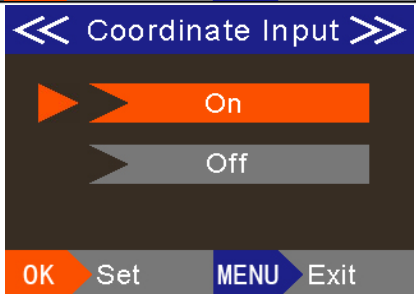
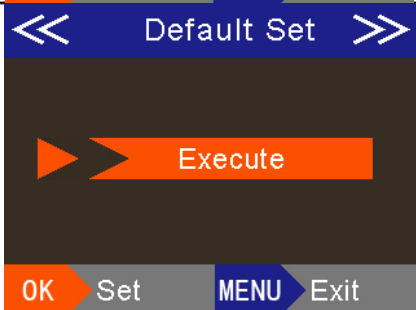
<p>Interval</p>		<p>Selects the length of time that the camera will “wait” until it responds to any additional triggers from the PIR after an animal is first detected and remains within the sensor’s range. During this user setting interval, the camera will ignore triggers and will not capture images/videos. This prevents the card from filling up with too many redundant images or videos.</p>
<p>Sensor Level</p>		<p>Selects the sensitivity level of the PIR motion sensor. Low, Normal, High and Auto are the options. Auto self-adjusts for differences in temperature while the other 3 options are fixed once chosen.</p>
<p>Flash Modes</p>		<p>Select different combinations of LED illumination and shutter speed to shoot optimized photos of objects at night.</p>

Detailed Menu Settings

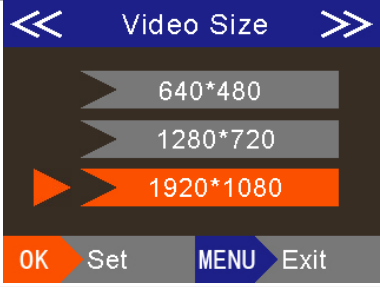
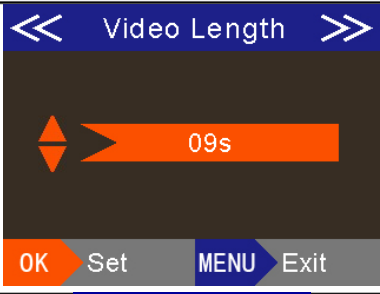

Work Period		<p>Selects the time frame that the user wants the camera to capture images. Default is 24 hours. Users who may be using the camera for security purposes may only want the camera to capture images after hours for example and avoid taking images during the busy day.</p>
Format		<p>Allows the user to format the SD card. NOTE: This will delete all contents on the SD card to make room for new images or videos.</p>
Time Stamp		<p>Selects whether the user wants to have the Time and Date stamped on images. The default mode is ON.</p>



Detailed Menu Settings

Time Scan		<p>Selects a period of time where the camera can take “time lapse” images where no motion is necessary to trigger the camera. This is beneficial when a user wants to monitor a field or food plot where the animals are further away than the detection sensor. There are 2 time periods that you can set for this function and a delay setting between non motion captures.</p>
Coordinate Input		<p>Allows user to input the gps or map coordinates of where the camera is located. This is useful when using “geo-tag” compatible image review programs. When this function is turned on, the image is tagged with coordinate information that allows the image review programs to know the image location.</p>
Default Set		<p>This function allows the user to revert the camera to the default settings set at the factory.</p>

Detailed Menu Settings

Video Size		<p>Selects video resolution that the camera will capture when the camera records video. 640*480 is standard VGA resolution, 1280*720 is 720p HD, and 1920*1080 is 1080p HD or Full HD.</p>
Video Length		<p>Selects video recording length.</p>
Version		<p>The version screen will indicate the software version that the camera has installed. This is extremely useful when troubleshooting issues with support as well as making sure you have the latest version of software from the alphacamhunt.com website.</p>



Mounting

We recommend mounting camera on a sturdy tree with a diameter of about 6 in. (15cm). To get the optimal picture quality, the tree should be about 16-17 ft (5 meters) away from the place to be monitored, with the camera placed at a height of about 5ft. (1.5 m). Also, keep in mind that you will get the best results at night when the subject is within the ideal flash range, no farther than 60' (19m) and no closer than 10'(3m) from the camera.

There are two ways to mount cam: using the provided adjustable web belt, or the tripod socket.

- Using the adjustable web belt: Push one end of the belt through the two brackets on the back of cam. Thread the end of the strap through the buckle. Fasten the belt securely around the tree trunk by pulling the end of the strap firmly so there is no slack left.
- Using the tripod socket: The camera is equipped with a socket at the bottom end.



Positioning and Sensing Angle

To test whether cam can effectively monitor the area you choose, this test is recommended to check the sensing angle and monitoring distance of cam. To perform the test:

- Switch cam to SETUP mode.
- Make movements in front of the camera at several positions within the area where you expect game or subjects to be.
- Try different distances and angles from camera.
- If motion indicator LED light blinks RED, it indicates that position can be sensed.

You can avoid potential false triggers due to temperature and motion disturbances in front of the camera by not aiming it at a heat source or nearby tree branches or brush (especially on windy days).

Product Specifications

Model	53002
Maximum image size	30MP
Lens	f=7.36mm F/NO:2.8 FOV=55°; Auto IR-Cut-Remove (at night)
IR-Flash Range	High Power IR Led: 6*850nm (33m)
Display Screen	2.4 inch HD Color Display
Memory Card	SD or SDHC Card, up to 512GB
Image Size	30MP (6400x4800);16MP (4736x3552);5M (2592X1944) under 4:3 mode(recommended)
Video Size	1920*1080 ; 1280*720 ; 640*480 ;
PIR Sensitivity	PIR with 4 sensitivity levels: High/ Normal/ Low/ Auto
Operation	Day/Night
Trigger Time	Picture trigger:< 0.25 s; Video trigger: <0.6s;
Trigger Interval	1sec-60min programmable
Shutter Speed	1/10-1/2000sec.
Shooting Numbers per trigger	1-9 programmable
Video Length	5-60sec. programmable
Power Supply	8xAA recommended; DC12V
Stand-by Current	<75uA
Power Consumption	150mA (+800mA when IR-LEDs lighted)
Certifications	FCC/CE/RoHs
Waterproof	IP67



Certifications

This equipment has been tested and found to comply with the limits for a Class B digital device, pursuant to part 15 of the FCC Rules. These limits are designed to provide reasonable protection against harmful interference in a residential installation. Operation is subject to the following two conditions: (1) This device may not cause harmful interference, and (2) this device must accept any interference received, including interference that may cause undesired operation. This equipment generates, uses and can radiate radio frequency energy and, if not installed and used in accordance with the instructions, may cause harmful interference to radio communications. However, there is no guarantee that interference will not occur in a particular installation. If this equipment does cause harmful interference to radio or television reception, which can be determined by turning the equipment off and on, the user is encouraged to try to correct the interference by one or more of the following measures:

- Reorient or relocate the receiving antenna.
- Increase the separation between the equipment and receiver.
- Connect the equipment into an outlet on a circuit different from that to which the receiver is connected.
- Consult the dealer or an experienced radio/TV technician for help. The device does not contain any user-serviceable parts.

Repairs should only be made by an Authorized Alpha Cam repair center. Unauthorized repairs or modifications could result in permanent damage to the equipment, and will void your warranty and your authority to operate this device under Part 15 regulations. The shielded interface cable which is provided must be used with the equipment in order to comply with the limits for a digital device pursuant to Subpart B of Part 15 of FCC Rules.





Notes





Warranty

During warranty, if a hardware failure occurs caused by a faulty component of the product, we will provide free maintenance service for the customer. Free warranty is for the first 2 years. If there is a need for repair, you should offer this warranty card, please take care of this card.

Warranty	
Model	_____
Serial Number	_____
Date of Purchase	_____
Your Name	_____
Your Address	_____ _____
Your Telephone	_____
Your Email	_____





For Questions and Support
www.alphacamhunt.com

support@alphacamhunt.com

©2019 SC Enterprises, LLC
Alpha Cam, TM, Denote Trademarks of
SC Enterprises, LLC