

## In the CENTER of it ALL...

Shopping, Dining and **MORE!**



Seminole City Park



Pinellas Trail



Lake Seminole Park



Gulf Beaches



### DRIVING DIRECTIONS:

From I-275 exit Pinellas Park/Seminole. Go West on Park Blvd. to Ridge Rd. and turn left. From US-19, go West on Park Blvd. and turn left on Ridge Rd. Costa del Sol, is your second right.

# Welcome to Your Personal Paradise!



7700 Ridge Road • Seminole, Florida 33772  
727.393.3232 • Fax: 727.397.8387  
costadelsolapts@gmail.com  
www.costadelsolfl.com



# A tropical gem located on Florida's West Coast!



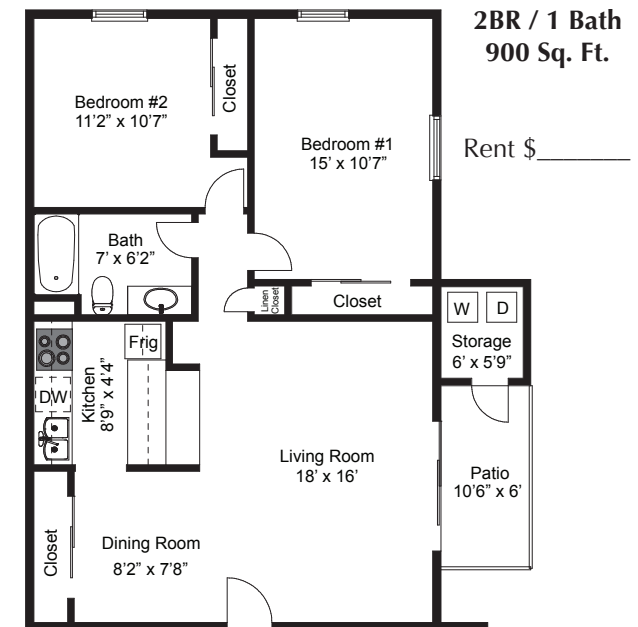
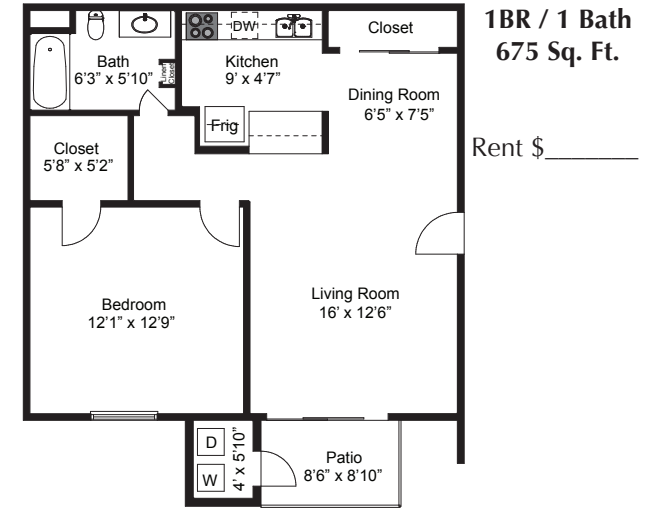
Costa Del Sol is located in Seminole, Florida, a picture-perfect city near some of the West Coast's best beaches, including North Redington Beach, Madeira Beach, and Treasure Island. Costa Del Sol provides that Florida lifestyle you want with our open floor plans, beautiful tropical landscaping, a resort-style heated swimming pool, and terrific patios and balconies to enjoy those balmy ocean breezes. Come check out our beautiful one and two-bedroom apartments today and start enjoying your own slice of tropical paradise!



## APARTMENT FEATURES

- Spacious Floor Plans
- Full Size Washer/Dryer in Every Unit
- Large Bathrooms
- Walk-In Closets (1 bedroom)
- Ceramic Tile Floors in Kitchen and Bath
- Floor-to-Ceiling Windows

## FLOOR PLANS



\$ \_\_\_\_\_ Application Fee    \$ \_\_\_\_\_ Deposit  
\$ \_\_\_\_\_ Pet Fee

## COMMUNITY AMENITIES

- Sparkling, Heated Swimming Pool
- Top-Rated School District
- Free Wi-Fi Access Poolside
- 24-Hour Fitness Center
- Picnic & Grilling Areas
- Beautifully Landscaped Grounds
- Reserved Parking
- Conveniently Located Clubhouse
- Pets Welcome – Pet Policy