

APP-00848 Split Core Current Transformer™

Applications

- ✓ Watt-hour meters
- ✓ Sub-metering
- ✓ Power Monitoring
- ✓ Current Measurements
- ✓ Over/Under Current Sensing

Features

- ✓ High Accuracy
- ✓ Low Phase Angle Error
- ✓ Small Size
- ✓ Nickel Alloy Core
- ✓ Removable Leg

Specifications

Standard: 5A=0.5V

Accuracy: 0.5A to 100A 0.6% @ 60Hz

Continuous Rating 100A

Maximum Current 130A

Max Phase Angle Error: +/-60min @ 60Hz

Voltage Rating: 600VAC

Bandwidth: 40Hz to 1KHz

Operating Temperature: -20°C to 50°C

Operation: Indoor

Case Material: ABS Thermoplastic

Removable Leg Screws: Knurled Nylon

Overall size: 2"H x 2.5"W x 1"D

Conductor Thru Hole Diameter: 0.4"

Standard 50' Twisted Leads, 22AWG

Black Wire Pos. W/ Arrow Towards Load



Ordering Information

Part Number = APP-00848-XXXmV

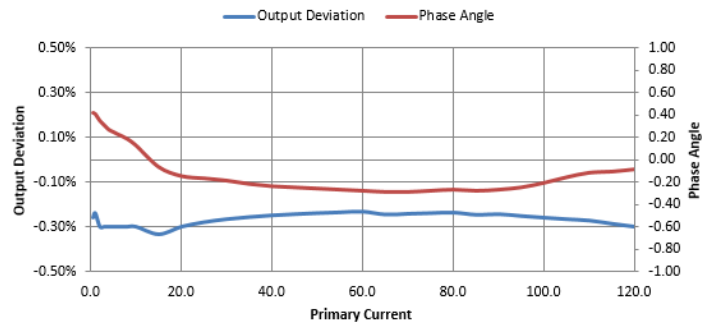
Where XXX = Your Desired Millivolt Output with 5 Amps Through the Primary

Example: APP-00848-500mV

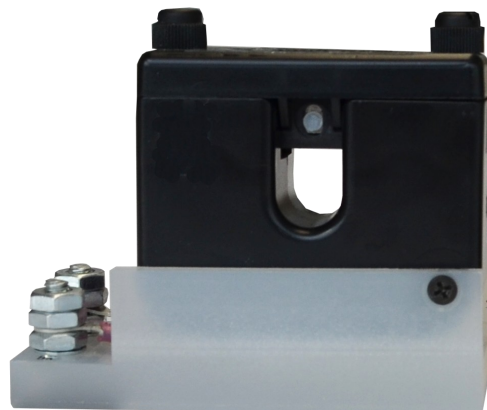
Example: APP-00848-125mV

APP-00848 Clamp On CT

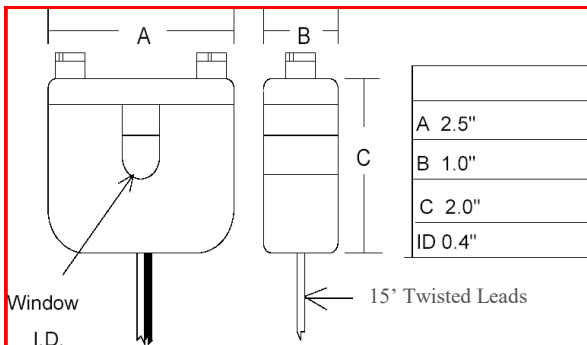
Tested from 0.5A to 120A @ 60Hz
Tested and Calibrated with EXTERNAL 100KΩ and 50nF
to Simulate DFR Analog Channel Input



Assembly P/N: APP00849 for 5A=500mV



Assembly P/N: APP00851 for 5A=500mV



Notes

- Based on your desired output voltage, CT turns ratio will be adjusted to meet published specifications.
- Internal resistors are 1/4W.
- Longer lead lengths available.
- Removable leg contains a lapped spring loaded core that mates with the precision core in the main housing.