

December 2020



Southwood Road Home

Accommodation and Support for Young Adults Aged 18 plus

Southwood Road home is ideally located in the heart of a vibrant London community in New Eltham, with easy access to bus and rail transport network into Eltham, Greenwich, Charlton, Bexleyheath, Sidcup and surrounding towns.

As well as good transport links, there are also many activities for people living in the home to engage and participate in within their local community.



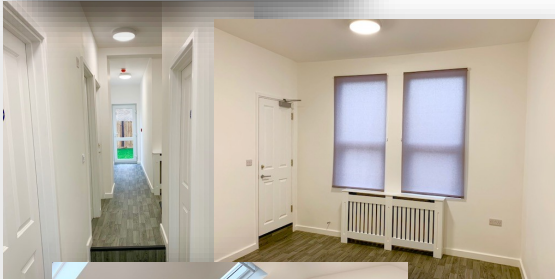
Welcome to Southwood Rd

- * Independent living in a safe accommodation
- * Five bedroom supported living service, offering a high standard of accommodation
- * Four spacious bedrooms on the ground and first floors, two of these with ensuite facilities
- * A self-contained apartment on the ground floor, ideally suited to someone with additional mobility needs
- * Large communal areas
- * Modern, open plan kitchen and dining area
- * Large garden and off-road parking

"We provide support for adults with a variety of complex needs, including learning disabilities, autism spectrum disorder and mental health conditions.

Experience staff will be on hand to ensure tailored care for each resident and each individual will be empowered to live as independently as possible"

Henry Phillips



Contact us

To make a referral or for enquiries and further information, call us on **020 3638 3520**, send an email to info@indexcare.co.uk or visit our website at www.indexcare.co.uk



Southwood Road home is centrally located in the community and has easy access to both rail and bus network.