

RELEAF WASHINGTON

PLANT, PROMOTE, PROTECT

Is It In You?



Is ReLeaf Washington's Board of Directors in your future?

Like all non-profit organizations, ReLeaf likes (and needs) good people to steer it.

Unlike many other organizations, ReLeaf's Board is a working board as opposed to an advisory board. Because ReLeaf has no paid employees, its governing board and its volunteers do the work to fulfill its mission. And there is plenty of work to do—rewarding, fulfilling work. Since its inception in 2018, ReLeaf has planted 180 trees. That sounds simple until one considers locating sites, the choices of species to plant, growing partnerships necessary to fund projects, and then taking care of our trees once they're in the ground. The rewards are more than worth it as we watch our trees survive and grow.



Planting trees is only part of what ReLeaf's Board does. It also *promotes* the planting of trees

by others and *protects* the trees we already have, especially Washington's heritage trees. Doing these things requires board members who are connected to the community and to the community's elected and appointed leaders. So...is it in you? Are you interested in helping to make Washington greener? If so, let us know. There may be a spot for you. A **GREEN** spot. -Written by Former Board Member Mack Simpson

Follow us online at www.releafwashington.com and on Facebook at <https://www.facebook.com/releafwashington>

Welcome To Fall ReLeafers!

Save the Date!

Pitt Street Brewing Co (On The Pamlico) will be donating **15%** of sales from **5pm-8pm on Friday, October 13th** to ReLeaf Washington!

To add to the fun, local band The HoneyJacks (eclectic sound with lots of classic rock covers!!) will be playing and we will have ReLeaf "merch" for sale! Please plan to come and show your support!



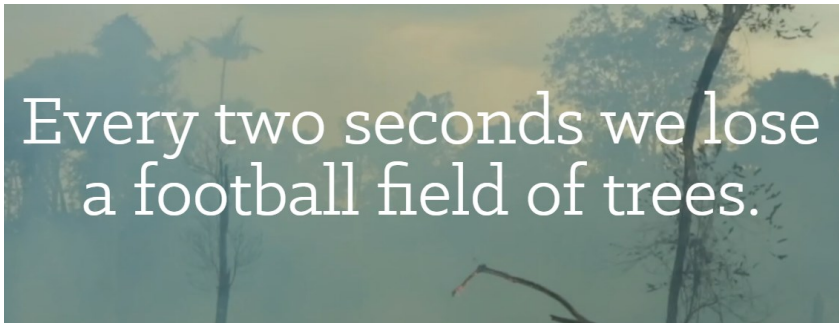
A great night to **PROMOTE**



RELEAF WASHINGTON

Board Members

Heather Moore Thienpont, President
Susan Sizemore-Watson, Treasurer
Dick Leach
Meredith Loughlin
Ben Hudson
Ginger Gardiner



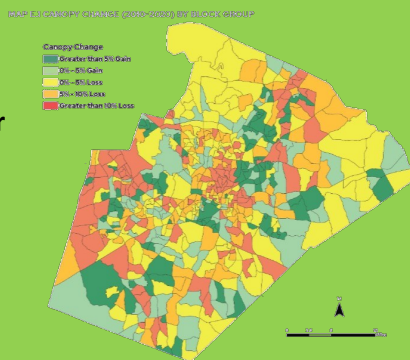
But reforestation programs can make a difference. Many cities in the U.S. and North Carolina now have urban forest and tree plans.

Raleigh/Wake County, NC

Lost **11,122 acres** of trees from 2010-2020.

2020 tree canopy cover was **54%**.

Identified **405,000** new planting sites and **10,000 acres** as high planting priority.



Every year, Wake County trees:

- Remove **11,000 tons** of air pollution
- Absorb **415,000 tons** of CO₂
- Prevent **8 billion gallons** of stormwater runoff

for a combined **value of \$3.2 billion**.

Wilmington, NC

2017 tree canopy cover was **48%** — Wilmington **lost 16%** from 2016-2020, and now has 32,500 street trees:

- Absorb **88 tons** of CO₂/year
- Prevent **1.3 million gallons** of stormwater runoff/year

2023 plan recommended to City Council:

- Maintain **50% tree canopy cover** overall
- Conduct tree **canopy study** every 4 years
- Promote **right of way** tree planting program
- Require a % tree canopy coverage **by land use type**
- Offer **stormwater reduction credits** for tree planting

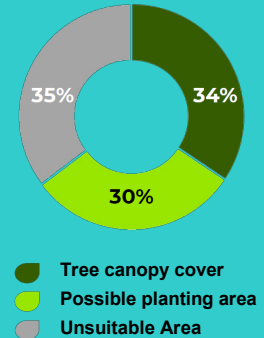
Other cities' tree plans/goals:

- Durham:** 1500 new street trees every year to 2025.
- Charlotte:** 50% tree canopy coverage by 2050.
- Charleston:** 1500 new trees by 2025, targeting areas with < 20% tree canopy coverage and increase private property plantings.

Greenville, NC

2020 tree canopy cover was **34%**.

From **2014 to 2020**, City Council Districts 2 and 5 **lost 50%** and **23%** of their canopy, but planting in other districts helped achieve **overall growth of 3%**.



Greenville has **7,239 acres** of plantable space.

Every year, Greenville trees:

- Remove **325 tons** of pollution
- Absorb **11,270 tons** of CO₂
- Prevent **34 million gallons** of stormwater runoff

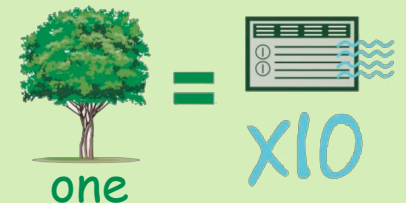
Greenville trees provide **\$3.4 million** in benefits and store **\$48 million** in CO₂.

ReLeaf Greenville has planted 1500 trees since 1990.

A mature tree produces as much oxygen in a season as 10 people inhale in a year.



Trees can reduce temperatures in cities by 10° and homes with tree shade stay 20° cooler in summer.



Trees can increase property values by up to 20%.

ReLeaf Washington has planted 200 trees toward our goal of 1,000 trees planted in 10 years.

Thanks for helping us to make Washington a cleaner, cooler, healthier place to live!

Fall 2023 Quarterly Membership List

Live Oak: \$100 To \$499

Robin Arnold

Kevin Duffus

Drs. Ted & Lauren Hodges

Ed & Pam Hodges

Susan Kavanaugh

Attila Nemezc

PS Jones Alumni Association Tree

Gary & Betty Wilson

In Honor/Memory 2021-2023

- ❖ Drs. Ted & Lauren Hodges: In Memory of Heidi Ruth Mason
- ❖ Dick & Beck Leach: In Memory of John C. Lawson, III
- ❖ Robin Arnold: In Memory of Robert Kent Meece
- ❖ Robin Arnold & Gordon Watts: In Memory of Patricia Klein & Michael Kent Mansfield
- ❖ Kathleen Simpson on behalf of Washington High School Class of 1971
- ❖ Mack & Susan Simpson: In Memory of Sally Ross Simpson Roseveare and Elizabeth Nash Butler
- ❖ ReLeaf Washington: In Memory of Emory Morgan
- ❖ Edward Newburn: In Memory of Thomas Sloan
- ❖ Bay Harbour Neighbours: In Memory of Ronald Woolard
- ❖ H. Clay Carter: In Memory of Mariah Gerow Lynch
- ❖ Dick & Becky Leach: In Honor of John Sabin Leach, Jr.
- ❖ Sole Train Runners/Laurel Mackenzie: In Memory of Jackson Griffin
- ❖ Beth & Chris Collier: In Memory of Mariah Gerow Lynch
- ❖ Dr. Elizabeth & Russel Cook: In Honor of Dr. Richard Young
- ❖ Delyle & Louise Evans: In Honor of and in Memory of LaRue M. Evans
- ❖ Mary Todd Mackenzie: In Memory of Mariah Gerow Lynch
- ❖ Parker & Elizabeth Johnson: In Honor of Becky and Dick Leach
- ❖ H. Clay Carter: In Honor of Lou Carter and Mary Carter
- ❖ Sabin Leach: In Memory of Richard Cox Leach
- ❖ Mary Todd Mackenzie: In Memory of Cathy and Lee Cooper
- ❖ Susan S. Watson: In Memory of Athy and Lee Cooper
- ❖ H. Clay Carter: In Honor of Lauren and Brock Lynch
- ❖ Robin Arnold: In Memory of Redding Lewis Cratch, Sr. and Verona Bailey Clark Cratch
- ❖ Robin Arnold & Gordon Watts Jr.: In Memory of Francis Marion Tillman
- ❖ Nannette Smyre: In Memory of Jean Shook
- ❖ Gray & Nancy Murray: In Memory of Herbery Hoell