

RECORDING MAPS

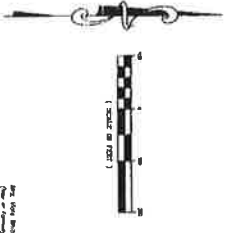
Map of Lot 142
Map of Lot 143
Map of Lot 144
Map of Lot 145
Map of Lot 146
Map of Lot 147
Map of Lot 148
Map of Lot 149
Map of Lot 150
Map of Lot 151
Map of Lot 152
Map of Lot 153
Map of Lot 154
Map of Lot 155
Map of Lot 156
Map of Lot 157
Map of Lot 158
Map of Lot 159
Map of Lot 160
Map of Lot 161
Map of Lot 162
Map of Lot 163
Map of Lot 164
Map of Lot 165
Map of Lot 166
Map of Lot 167
Map of Lot 168

RECORDING MAPS

Map of Lot 142
Map of Lot 143
Map of Lot 144
Map of Lot 145
Map of Lot 146
Map of Lot 147
Map of Lot 148
Map of Lot 149
Map of Lot 150
Map of Lot 151
Map of Lot 152
Map of Lot 153
Map of Lot 154
Map of Lot 155
Map of Lot 156
Map of Lot 157
Map of Lot 158
Map of Lot 159
Map of Lot 160
Map of Lot 161
Map of Lot 162
Map of Lot 163
Map of Lot 164
Map of Lot 165
Map of Lot 166
Map of Lot 167
Map of Lot 168

RECORDING MAPS

Map of Lot 142
Map of Lot 143
Map of Lot 144
Map of Lot 145
Map of Lot 146
Map of Lot 147
Map of Lot 148
Map of Lot 149
Map of Lot 150
Map of Lot 151
Map of Lot 152
Map of Lot 153
Map of Lot 154
Map of Lot 155
Map of Lot 156
Map of Lot 157
Map of Lot 158
Map of Lot 159
Map of Lot 160
Map of Lot 161
Map of Lot 162
Map of Lot 163
Map of Lot 164
Map of Lot 165
Map of Lot 166
Map of Lot 167
Map of Lot 168



GENERAL NOTES

1. RECORDING MAPS - FIRST PLAT, PART 2, BY GWS ENGINEERS, INC., DATED AUGUST 26, 1987.
2. THIRD PLAT OF "QUAIL CREEK" - SECOND PLAT, BY GWS ENGINEERS, INC., DATED MARCH 1, 1988.

REPERMITS REQUIRED:

1. ZONING AND BULKHEAD PERMITS (421201, 421201-X)
2. FLOOD ZONE, 4 & C
3. EROSION CONTROL PERMITS
4. ACCESS TO 24 HOURS
5. UTILITIES - WATER
6. UTILITIES - SEWER
7. UTILITIES - GAS
8. UTILITIES - ELECTRIC
9. UTILITIES - CABLE
10. UTILITIES - TELEPHONE
11. UTILITIES - FIBER OPTIC
12. UTILITIES - RAIN WATER
13. UTILITIES - SLOTTED DRAINAGE
14. UTILITIES - STORM DRAINAGE
15. UTILITIES - SWAMP DRAINAGE
16. UTILITIES - OTHER

REPERMITS REQUIRED - REPERMITS REQUIRED:

1. ZONING AND BULKHEAD PERMITS (421201, 421201-X)
2. FLOOD ZONE, 4 & C
3. EROSION CONTROL PERMITS
4. ACCESS TO 24 HOURS
5. UTILITIES - WATER
6. UTILITIES - SEWER
7. UTILITIES - GAS
8. UTILITIES - ELECTRIC
9. UTILITIES - CABLE
10. UTILITIES - TELEPHONE
11. UTILITIES - FIBER OPTIC
12. UTILITIES - RAIN WATER
13. UTILITIES - SLOTTED DRAINAGE
14. UTILITIES - STORM DRAINAGE
15. UTILITIES - SWAMP DRAINAGE
16. UTILITIES - OTHER

RECORDING MAPS

Map of Lot 142
Map of Lot 143
Map of Lot 144
Map of Lot 145
Map of Lot 146
Map of Lot 147
Map of Lot 148
Map of Lot 149
Map of Lot 150
Map of Lot 151
Map of Lot 152
Map of Lot 153
Map of Lot 154
Map of Lot 155
Map of Lot 156
Map of Lot 157
Map of Lot 158
Map of Lot 159
Map of Lot 160
Map of Lot 161
Map of Lot 162
Map of Lot 163
Map of Lot 164
Map of Lot 165
Map of Lot 166
Map of Lot 167
Map of Lot 168

RECORDING MAPS

Map of Lot 142
Map of Lot 143
Map of Lot 144
Map of Lot 145
Map of Lot 146
Map of Lot 147
Map of Lot 148
Map of Lot 149
Map of Lot 150
Map of Lot 151
Map of Lot 152
Map of Lot 153
Map of Lot 154
Map of Lot 155
Map of Lot 156
Map of Lot 157
Map of Lot 158
Map of Lot 159
Map of Lot 160
Map of Lot 161
Map of Lot 162
Map of Lot 163
Map of Lot 164
Map of Lot 165
Map of Lot 166
Map of Lot 167
Map of Lot 168

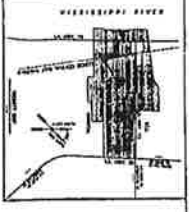
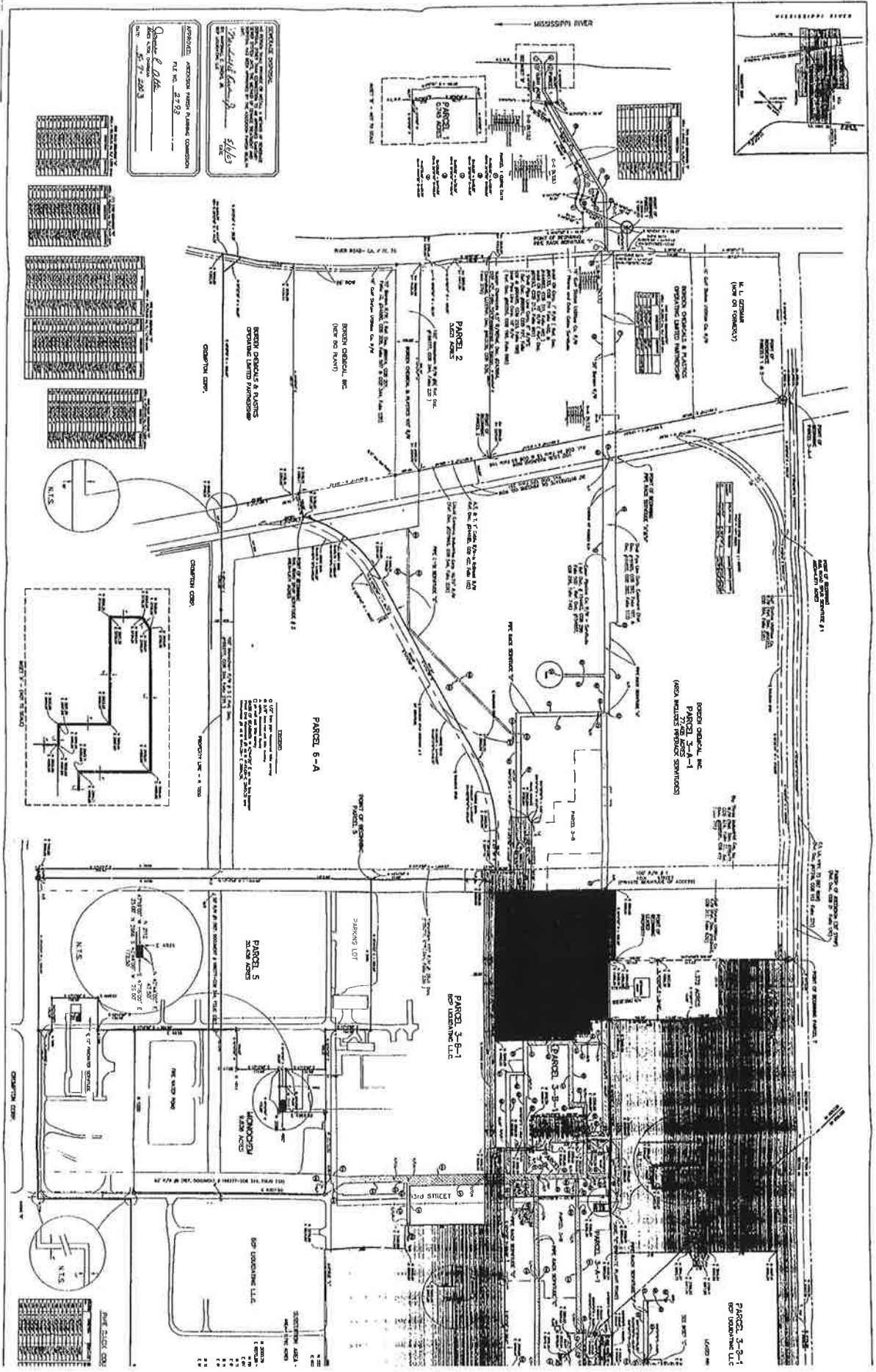
RECORDING MAPS

Map of Lot 142
Map of Lot 143
Map of Lot 144
Map of Lot 145
Map of Lot 146
Map of Lot 147
Map of Lot 148
Map of Lot 149
Map of Lot 150
Map of Lot 151
Map of Lot 152
Map of Lot 153
Map of Lot 154
Map of Lot 155
Map of Lot 156
Map of Lot 157
Map of Lot 158
Map of Lot 159
Map of Lot 160
Map of Lot 161
Map of Lot 162
Map of Lot 163
Map of Lot 164
Map of Lot 165
Map of Lot 166
Map of Lot 167
Map of Lot 168

#543496

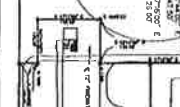
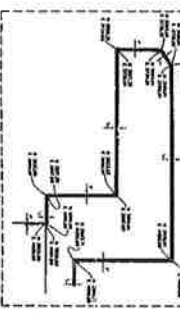
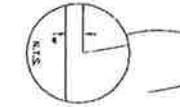
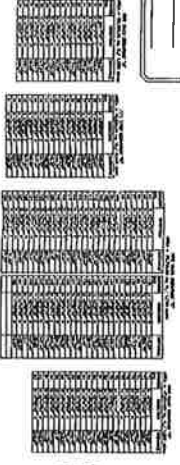
GWS Engineers, Inc.

51.34.96



NOTICE TO CONTRACTORS
 THE CONTRACTOR SHALL BE RESPONSIBLE FOR OBTAINING ALL NECESSARY PERMITS AND APPROVALS FROM THE APPROPRIATE AGENCIES AND AGENCIES OF THE STATE OF MISSISSIPPI. THE CONTRACTOR SHALL BE RESPONSIBLE FOR OBTAINING ALL NECESSARY PERMITS AND APPROVALS FROM THE APPROPRIATE AGENCIES AND AGENCIES OF THE STATE OF MISSISSIPPI.

APPROVED
 ARCHITECTURAL DESIGN BOARD
 FILE NO. 2723
 DATE: 05/27/2003



1 2 3 4 5 6

