

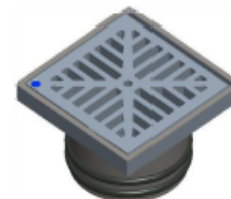
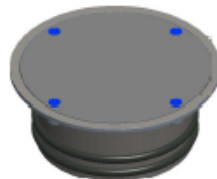
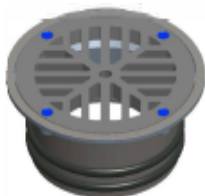


Trade Waste Drains

Floor Drains, Bucket Traps & Clear Outs

TWD150SQBT	150mm Square Push-In Bucket Trap Floor Drain
TWD150SQFD	150mm Square Push-In Floor Drain
TWD130SQBT	130mm Square Push-In Bucket Trap Floor Drain
TWD130SQFD	130mm Square Push-In Floor Drain
TWD130RNDBT	130mm Circular Push-In Bucket Trap Floor Drain
TWD130RNDFFD	130mm Circular Push-In Floor Drain
TWD140RNDVBT	140mm Circular Push-In Bucket Trap Vinyl Floor Drain
TWD140RNDVFD	140mm Circular Push-In Vinyl Floor Drain
TWD130RNDSCO	130mm Circular Push-In Gas Tight Clear-Out
TWD140RNDVCO	140mm Circular Push-In Gas Tight Vinyl Clear-Out

PRODUCT CATALOGUE - REV01/25





TWD

130MM CIRCULAR BUCKET TRAP

TWD130RNDBT

Push-in circular bucket trap for indoor and outdoor applications.

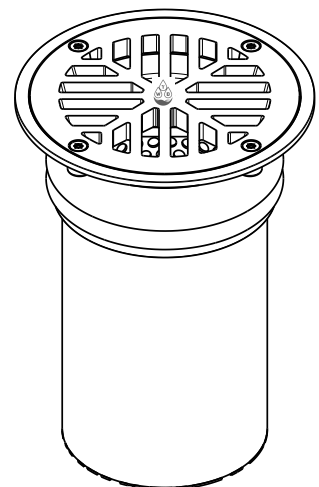
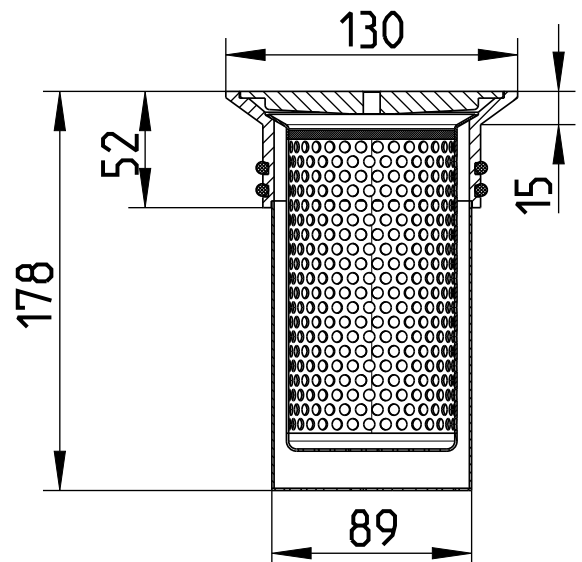
Suitable for all floor finishes - concrete tiled and resin.

Product Code.

TWD130RNDBT

Specification:

Application:	Commercial Drainage
Floor:	Concrete / Tiled / Resin
Frame (mm):	130
Outlet Diameter (mm):	89
Material:	AISI 304
Load Class AS3996 (kg):	L15
Standards / Specification:	<ul style="list-style-type: none">• WMTS-040• AS3996• AS4586
Secure Lock Grating:	Anti Vandal Screw
Outlet Direction:	Vertical
Shape:	Circular
Dimensions (mm):	See Drawing
Weight (kg):	1.60
Ring Seal:	EPDM



Features:

- Non-Slip.
- Fixed Secondary Strainer.
- Removable Filter Basket.
- Secure Lock Grating.
- Heel Safe Grating.
- Suitable for use with stainless steel, cast iron, copper, HDPE, PVC and PP pipe and fitting.

www.tradewastedrain.com

W
WaterMark
WMK 27044



TWD

130MM CIRCULAR RODDING EYE

TWD130RNDCO

Push-in circular rodding eye for indoor and outdoor applications.

Suitable for all floor finishes - concrete tiled and resin.

Product Code:

TWD130RNDCO

Specification:

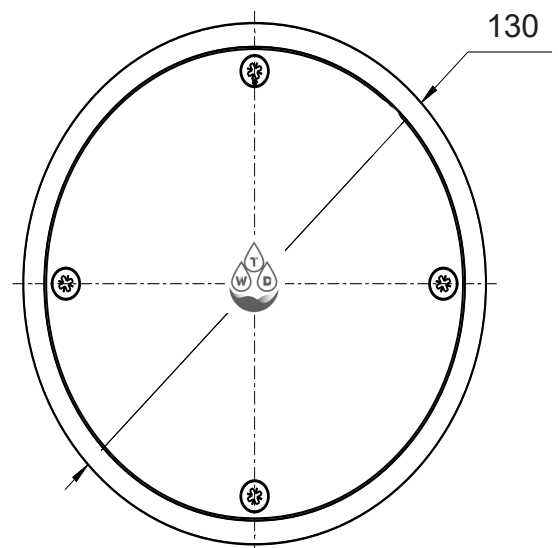
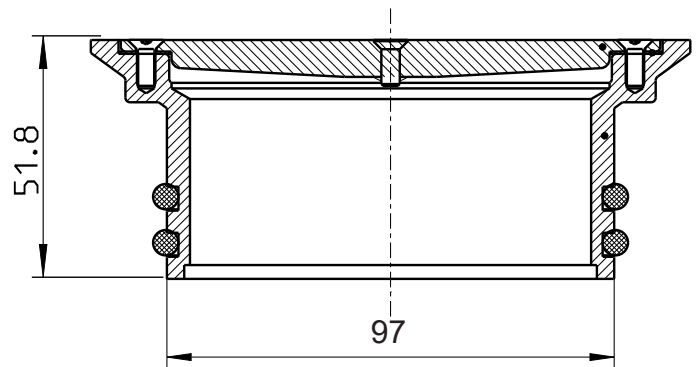
Application:	Commercial Drainage
Floor:	Concrete / Tiled / Resin
Frame (mm): Outlet	130
Diameter (mm):	97
Material:	AISI 304
Load Class: AS3996 (kg):	L15
Standards / Specification:	<ul style="list-style-type: none">• WMTS-040• AS3996• AS4586

Secure Lock Grating:	Anti Vandal Screw
Outlet Direction:	Vertical
Shape:	Circular
Dimensions (mm):	See Drawing
Weight (kg):	1.25
Ring Seal:	EPDM

Features:

- Non-Slip.
- Secure Lock Grating
- Suitable for use with stainless steel, cast iron, copper, HDPE, PVC and PP pipe and fittings.

*Cover to be removed using Vacuum Handle





TWD

130MM CIRCULAR FLOOR DRAIN

TWD130RNDFD

Push-in circular floor drain for indoor and outdoor applications.

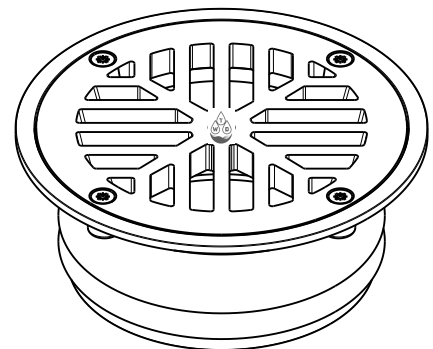
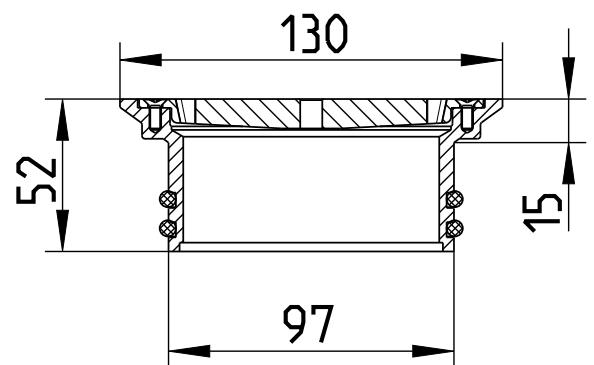
Suitable for all floor finishes - concrete tiled and resin.

Product Codes:

TWD130RNDFD

Specification:

Application:	Commercial Drainage
Floor:	Concrete / Tiled / Epoxy / Resin
Frame (mm):	130
Outlet Diameter (mm):	97
Material:	AISI 304
Load Class AS3996 (kg):	L15
Specification:	<ul style="list-style-type: none">• WMTS-040• AS3996• AS4586
Secure Lock Grating:	Anti Vandal Screw
Outlet Direction:	Vertical
Shape:	Circular
Dimensions (mm):	See Drawing
Weight (kg):	1.10
Ring Seal:	EPDM



Features:

- Non-Slip.
- Secure Lock Grating
- Heel Safe Grating.
- Suitable for use with stainless steel, cast iron, copper, HDPE, PVC and PP pipe and fittings.



TWD

130mm CIRCULAR VINYL CLEAR OUT

TWD130RNDVCO

Push-in circular vinyl clear out for indoor applications.

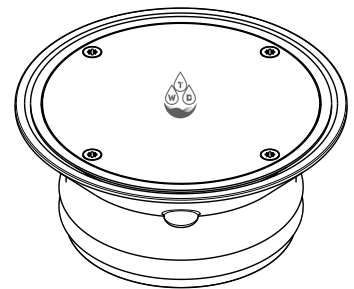
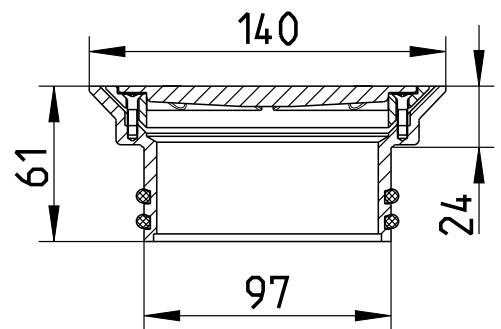
Suitable for vinyl floor finishes.

Product Codes:

TWD130RNDVCO

Specification:

Application:	Commercial Drainage
Floor:	Vinyl
Frame (mm):	140
Outlet Diameter (mm):	97
Material:	AISI 304
Load Class AS3996 (kg):	L15
Standards / Specification:	<ul style="list-style-type: none">• WMTS-040• AS3996• AS4586
Secure Lock Grating:	Anti Vandal Screw
Outlet Direction:	Vertical
Shape:	Circular
Dimensions (mm):	See Drawing
Weight (kg):	1.60
Ring Seal:	EPDM



Features:

- Non-Slip.
- Secure Lock Grating
- Suitable for use with stainless steel, cast iron, copper, HDPE, PVC and PP pipe and fittings.

*Cover to be removed using Vacuum Handle (700.000.002)



TWD

130mm SQUARE TOP BUCKET TRAP

TWD130SQBT

Push-in series commercial floor drain for indoor and outdoor applications

Suitable for floor finishes - concrete tiled and resin.

Product Code:

TWD130SQBT

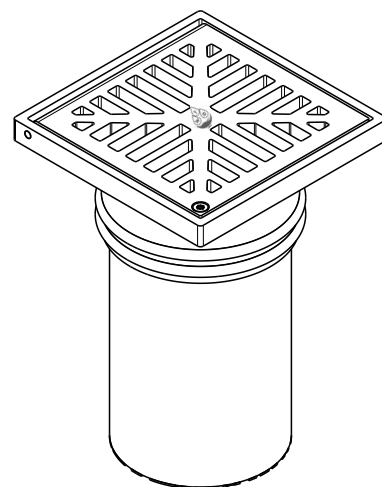
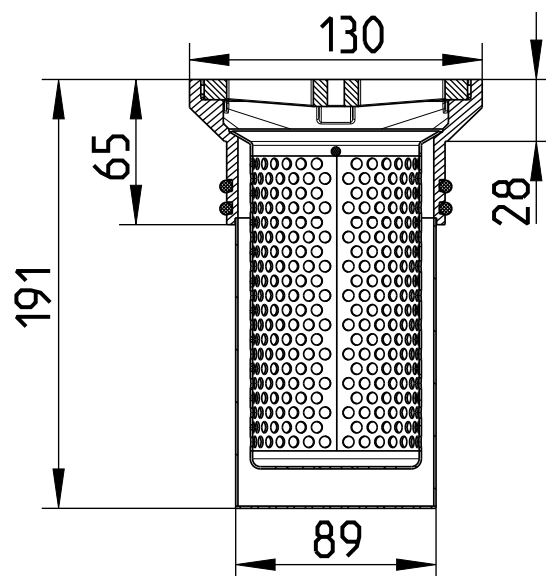
Specification:

Application:	Commercial Drainage
Floor:	Concrete / Tiled / Resin
Frame (mm):	130 x 130
Outlet Diameter (mm):	89
Material:	AISI 304
Load Class AS3996 (kg):	L15
Standards Specification:	<ul style="list-style-type: none">• WMTS-040• AS3996• AS4586

Secure Lock Grating:	Anti -Vandal Screw
Outlet Direction:	Vertical
Shape:	Square
Dimensions (mm):	See Drawing
Weight (kg):	2.40
Ring Seal:	EPDM

Features

- Non-Slip.
- Fixed Secondary Strainer
- Removable Filter Basket
- Secure Lock Grating
- 110° Hinged Grating
- Heel Safe Grating.
- Suitable for use with stainless steel, cast iron, copper, HDPE, PVC and PP pipe and fittings.



www.tradewastedrain.com

W
WaterMark
WMK 27044



TWD

130mm SQUARE TOP FLOOR DRAIN

TWD130SQFD

Push-in series commercial floor drain for indoor and outdoor applications

Suitable for floor finishes - concrete tiled and resin.

Product Code:

TWD130SQFD

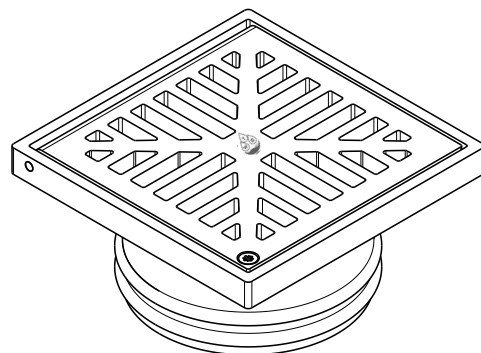
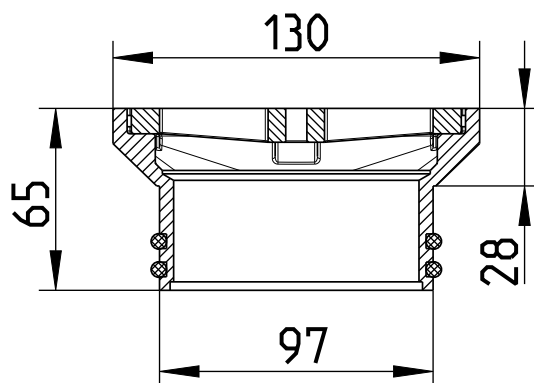
Specification:

Application:	Commercial Drainage
Floor:	Concrete / Tiled / Resin
Frame (mm):	130x130
Outlet Diameter (mm):	97
Material:	AISI 304
Load Class AS3996 (kg):	L15
Standards / Specification:	• WMTS-040

• AS3996

• AS4586

Secure Lock Grating:	Anti-Vandal Head
Outlet Direction:	Vertical
Shape:	Square
Dimensions (mm):	See Drawing
Weight (kg)	1.85
Ring Seal:	EPDM



Features:

- Non-Slip.
- Secure Lock Grating
- 110° Hinged Grating
- Heel Safe Grating.
- Suitable for use with stainless steel, cast iron, copper, HDPE, PVC and PP pipe and fittings.



TWD

140mm CIRCULAR BUCKET TRAP

TWD140RNDVBT

Push-in circular bucket trap for indoor applications.

Suitable for all vinyl floor finishes.

Product Codes:

TWD140RNDVBT

Specification:

Application: Commercial Drainage

Floor: Vinyl

Frame (mm): 140

Outlet Diameter (mm): 89

Material: AISI 304

Load Class AS3996 (kg): L15

Standards Specification:

- WMTS-040
- AS3996
- AS4586

Secure Lock Grating: Anti Vandal Head

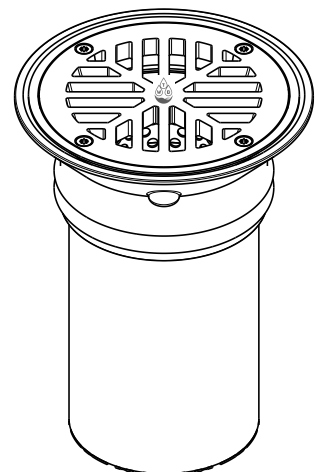
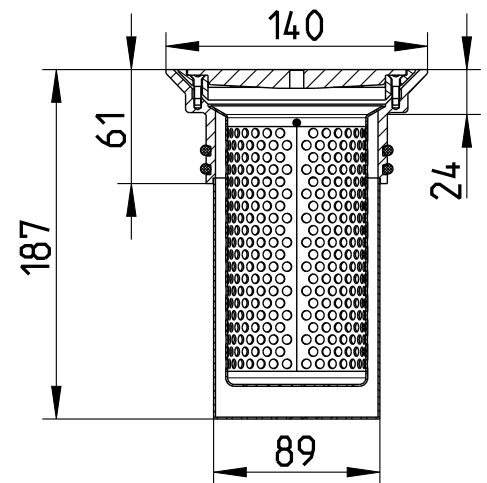
Outlet Direction: Vertical

Shape: Circular

Dimensions (mm): See Drawing

Weight (kg): 2.00

Ring Seal: EPDM



Features:

- Non-Slip.
- Fixed Secondary Strainer.
- Removable Filter Basket.
- Secure Lock Grating.
- Heel Safe Grating.
- Suitable for use with stainless steel, cast iron, copper, HDPE, PVC and PP pipe and fittings.



TWD

140mm CIRCULAR VINYL FLOOR DRAIN

TWD140RNDVUP

Push-in circular floor drain for indoor applications.

Suitable for vinyl floor finishes.

Product Codes:

TWD140RNDVUP

Specification:

Application: Commercial Drainage

Floor: Vinyl

Frame (mm): 140

Outlet Diameter (mm): 97

Material: AISI 304

Load Class AS3996 (kg): L15

Standards / Specification:

- WMTS-040

- AS3996

- AS4586

Secure Lock Grating: Anti Vandal Screw

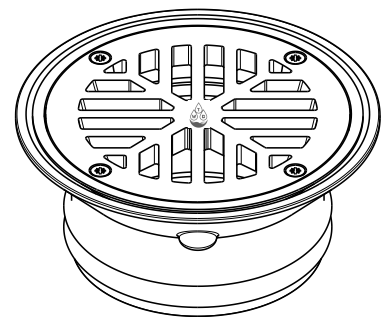
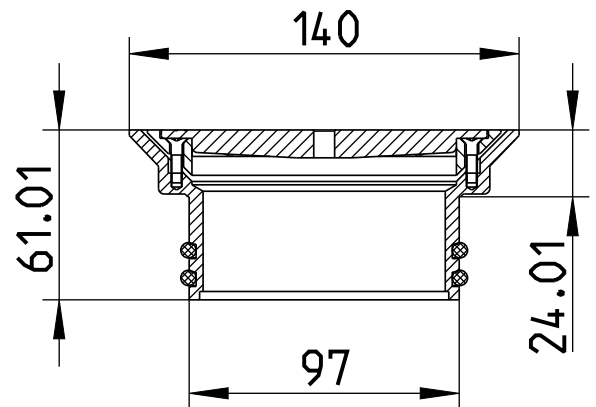
Outlet Direction: Vertical

Shape: Circular

Dimensions (mm): See Drawing

Weight (kg): 1.50

Ring Seal: EPDM



Features:

- Non-Slip.
- Secure Lock Grating.
- Heel Safe Grating.
- Suitable for use with stainless steel, cast iron, copper, HDPE, PVC and PP pipe and fittings.



TWD

150mm SQUARE TOP BUCKET TRAP

TWD150SQBT

Push-in series commercial floor drain for indoor and outdoor applications

Suitable for floor finishes - concrete tiled and resin.

Product Code:

TWD150SQBT

Specification:

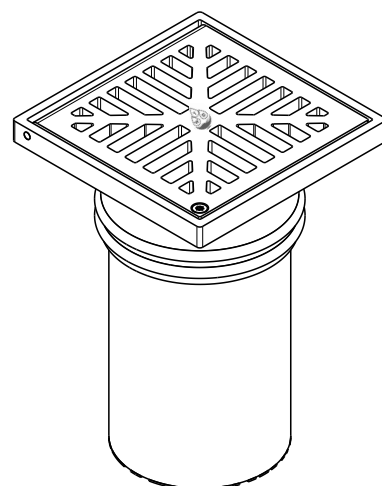
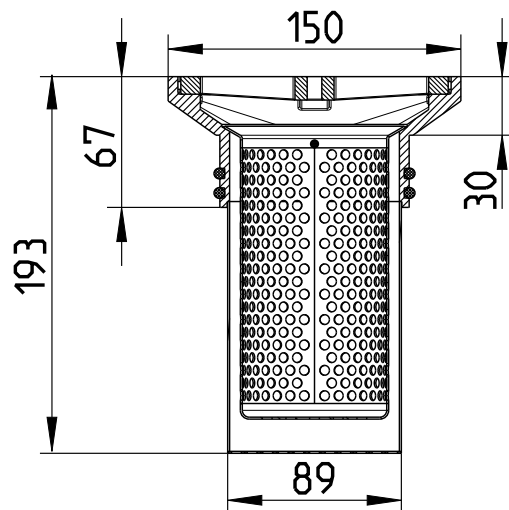
Application: Commercial Drainage
Floor: Concrete / Tiled / Resin
Frame (mm): 150 x 150
Outlet Diameter (mm): 89
Material: SS 304
Load Class AS3996 (kg): L15
Standards / Specification:

- WMTS-040
- AS3996
- AS4586

Secure Lock Grating: Anti - Vandal Screw
Outlet Direction: Shape: Vertical
Dimensions (mm): Square
Weight (kg): See Drawing
Ring Seal: 2.85

Features: EPDM

- Non-Slip.
- Removable Filter Basket.
- Secure Lock Grating.
- 110° Hinged Grating.
- Heel Safe Grating.
- Suitable for use with stainless steel, cast iron, copper, HDPE, PVC and PP pipe and fittings.



www.tradewastedrain.com

W
WaterMark
WMK 27044



TWD

150mm SQUARE TOP FLOOR DRAIN

TWD150SQFD

Push-in series commercial floor drain for indoor and outdoor applications

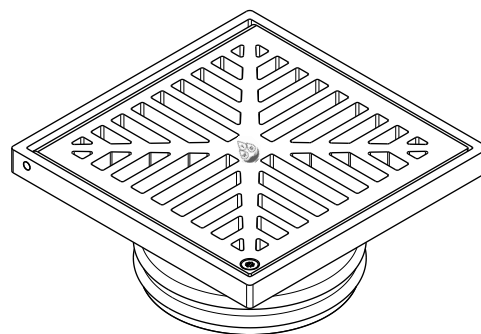
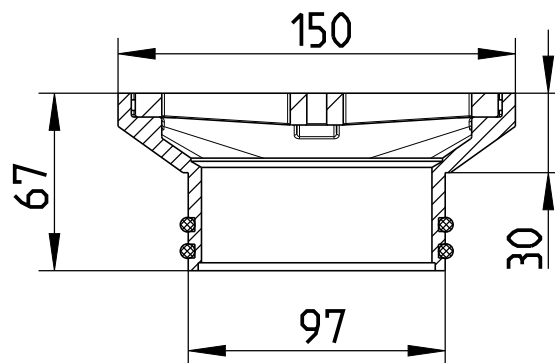
Suitable for floor finishes from concrete tiled and resin.

Product Codes:

TWD150SQFD

Specification:

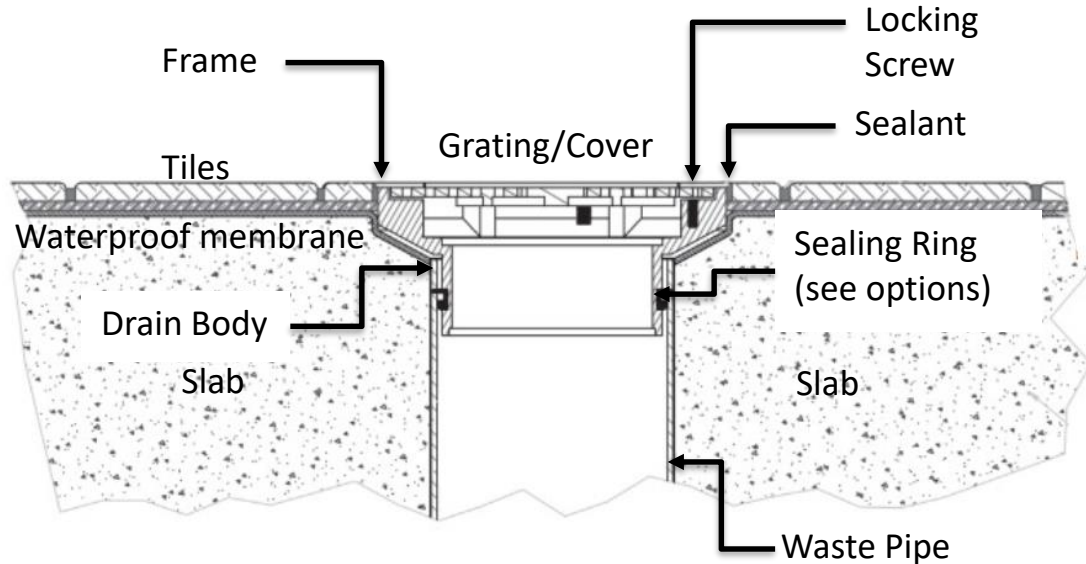
Application:	Commercial Drainage
Floor:	Concrete / Tiled / Resin
Frame (mm):	150 x 150
Outlet Diameter (mm):	97
Material:	SS304
Load Class AS3996 (kg):	L15
Standards / Specification:	• WMTS-040 • AS3996 • AS4586
Secure Lock Grating:	Anti - Vandal Screw
Outlet Direction:	Vertical
Shape:	Square
Dimensions (mm):	See Drawing
Weight (kg):	2.25
Ring Seal:	EPDM



Features:

- Non-Slip.
- Secure Lock Grating.
- 110° Hinged Grating.
- Heel Safe Grating.
- Suitable for use with stainless steel, cast iron, copper, HDPE, PVC and PP pipe and fittings.

TWD: Typical Installation - Tiled Floor



1. Remove/lift Grate and basket:

- Undo screws from the grate/cover (if included)
- Remove the filter basket (if included).

2. Waterproofing:

- Apply waterproof membrane between the floor and the body of the drain.

3. Insert drain Body:

- Insert the body of the drain into the prepared waste pipe and push in to required height. Remember to use the correct sealing ring for the waste pipe material.

4. Seal Joints:

- Apply a suitable sealant between the drain body frame and the adjacent tiles

5. Reassemble:

- Replace the filter basket (if included).
- Close/Replace the grate/cover, and re-fit locking screws.

6. Test Drainage:

- Ensure the grate provides adequate drainage (clear outs excluded).



TWD: Typical Installation - Concrete Floor

1. Remove/lift Grate and basket:

- Undo screws from the grate/cover (if included)
- Remove the filter basket (if included).

2. Apply Sealant:

- Apply a bead of sealant around the outside edge of the drain frame.

3. Insert drain Body:

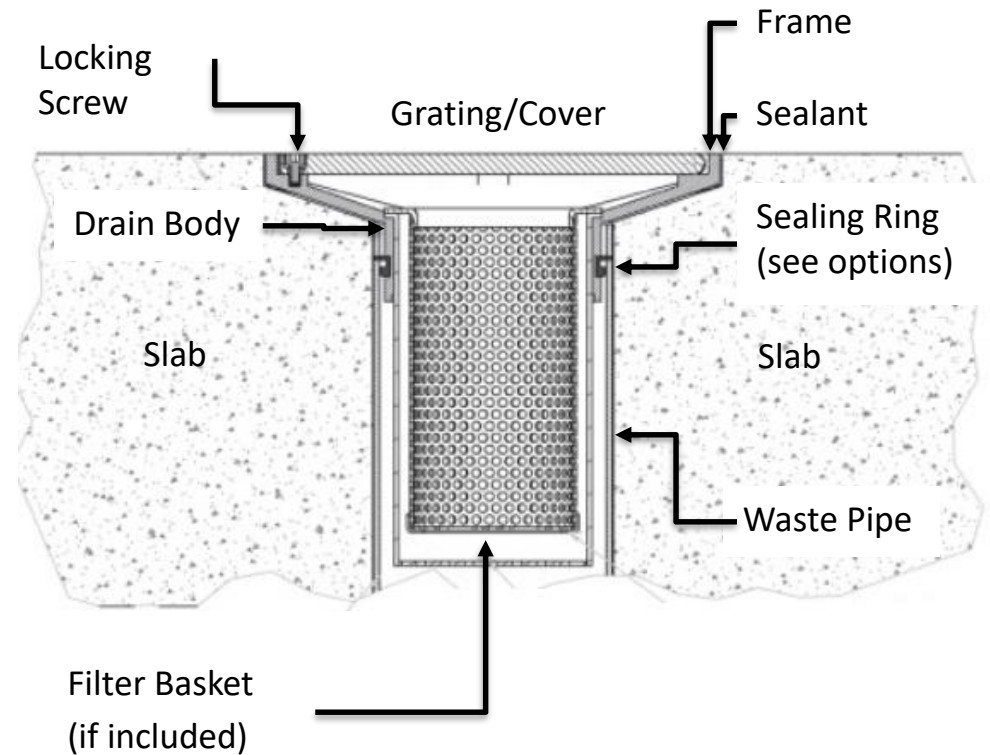
- Insert the body of the drain into the prepared waste pipe and push in to required height. Remember to use the correct sealing ring for the waste pipe material.

4. Reassemble:

- Replace the filter basket (if included).
- Close/Replace the grate/cover, and re-fit locking screws.

5. Test Drainage:

- Ensure the grate provides adequate drainage (clear outs excluded).



TWD: Typical Installation - Vinyl Floor

1. Remove/lift Grate and basket:

- Undo screws from the grate/cover (if included), and remove the vinyl clamping ring.
- Remove the filter basket (if included).

2. Apply Sealant:

- Apply a bead of sealant around the outside edge of the drain frame.

3. Insert drain Body:

- Insert the body of the drain into the prepared waste pipe and push in to required height. Remember to use the correct sealing ring for the waste pipe material.

4. Lay Flooring:

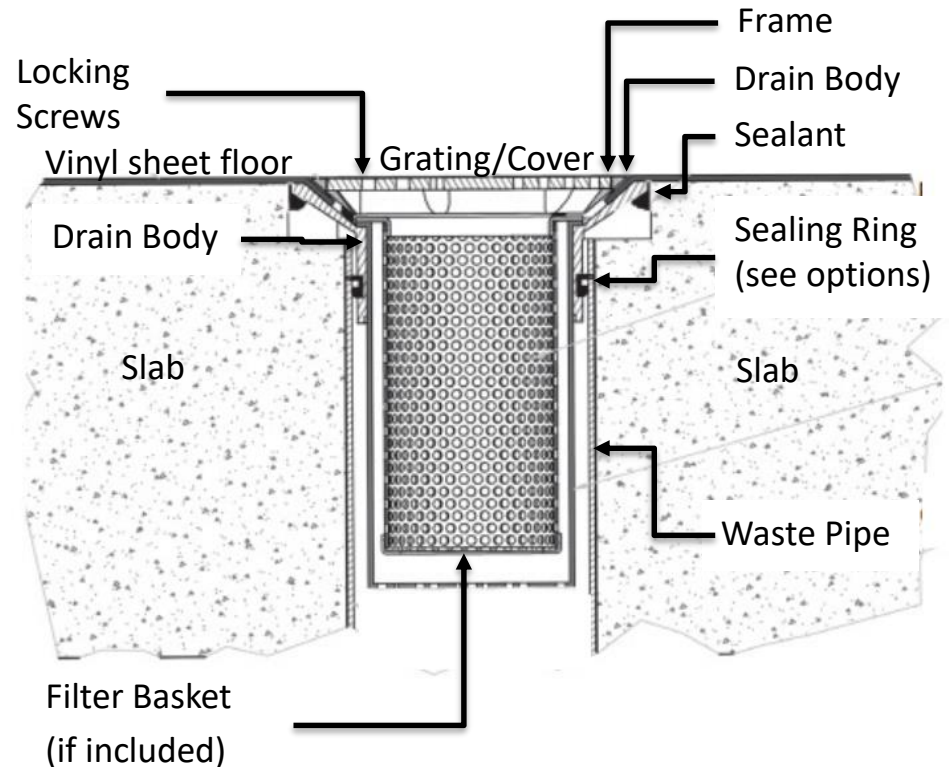
- Lay flooring, making sure to allow for adequate material to feed into the clamping ring seal.
- Replace vinyl clamping ring and screw into place.

5. Reassemble:

- Replace the filter basket (if included).
- Close/Replace the grate/cover, and re-fit locking screws.

6. Test Drainage:

- Ensure the grate provides adequate drainage (clear outs excluded).





General Recommendations & Troubleshooting

- Ensure installation is performed by a qualified plumber following the Plumbing Code of Australia (PCA), AS/NZS3500, and manufacturer's instructions.
- Floor drains with bucket traps should be cleaned on a regular basis to avoid blockages.
- When cleaning a bucket trap, avoid hitting it against a hard surface or with a heavy object to remove debris. Instead, any stuck debris should be removed using a high powered jet wash or with a small cleaning device such as a brush.
- Be sure to use the grating locking screws when finished with any cleaning and maintenance to avoid mis-use of the floor drain.

Contact Information



www.tradewastedrain.com.au



sales@tradewastedrain.com.au
info@tradewastedrain.com.au



008 861 367 899 566

All information contained in this catalogue is accurate as of May 2025. TRADE WASTE DRAIN expressly reserves the right to amend, modify, or discontinue any product specifications, designs, components, or related services at its sole discretion and without prior notice. The contents of this catalogue are provided for informational purposes only and shall not be construed as forming part of any contract of sale, nor shall they constitute a representation or warranty with respect to any product or service offered by TRADE WASTE DRAIN. Prior to entering into any transaction or specifying any product, it is the responsibility of the purchaser or specifier to contact TRADE WASTE DRAIN for the most current information regarding available products or services. All drawings and illustrations contained herein are for illustrative purposes only and are not to scale.